

Document Links:[HBPC Instrument](#)**COHORT**

69 – Home Based Primary Care

REVSTAT

REVIEW STATUS (not abstracted)

0. Abstraction has not begun
1. Abstraction in progress
2. Abstraction completed w/o errors
3. Cohort validation failure (exclusion)
4. Record contains missing data
5. Administrative Exclusion

HCSTATUS (HBPC)

Counting from the most recent HBPC encounter within the study interval, enter the patient's status in regard to HBPC admission:

2. HBPC admission greater than or equal to 30 days but less than or equal to 1 year
3. HBPC admission greater than one year (>365 days from the admission date)

INPTADM (HBPC)

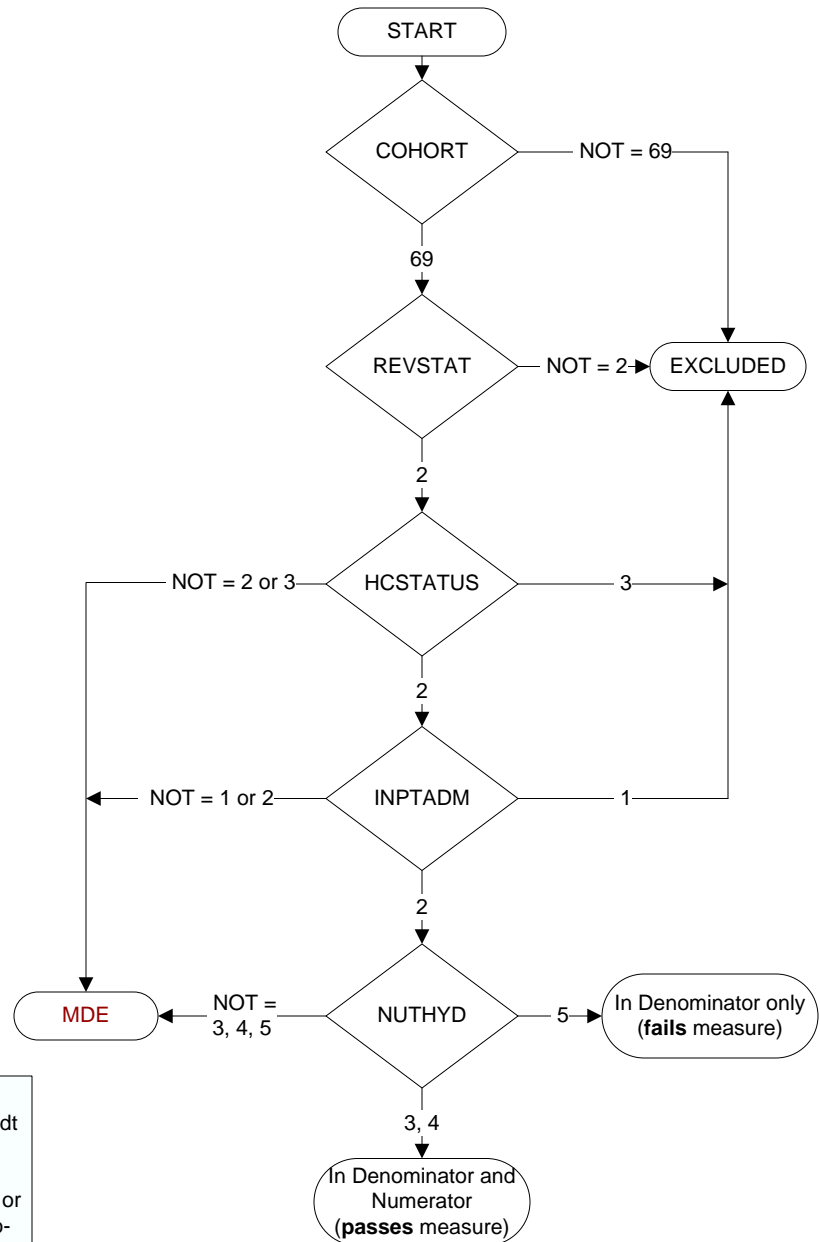
During the time frame from (computer display admisdt to admisdt + 30 days), did the record document the patient was admitted to an acute or non-acute inpatient facility?

1. Yes
2. No

NUTHYD (HBPC)

During the time frame from (computer display admisdt – 30 days to admisdt + 30 days), does the record document assessment of the patient's nutritional and hydration needs by a HBPC Registered Dietician (RD) or Registered Dietician Nutritionist (RDN) during a face-to-face encounter in the veteran's home OR a clinical video telehealth (CVT) encounter prior to 7/01/2023?

3. Yes, assessment of patient's nutritional and hydration needs by a HBPC RD or RDN was documented during a face-to-face encounter.
4. Yes, assessment of patient's nutritional and hydration needs by a HBPC RD or RDN was documented during a CVT encounter prior to 7/01/2023.
5. No assessment of the patient's nutritional and hydration needs was documented by a HBPC RD or RDN during a face-to-face or CVT encounter



**MDE = Missing or
Invalid Data Exclusion
(data error)**