

Document Links:[Transition of Care Instrument](#)**REVSTAT**

REVIEW STATUS (not abstracted)

0. Abstraction has not begun
1. Abstraction in progress
2. Abstraction completed w/o errors
3. TVG failure (exclusion)
4. Record contains missing required answers
5. Administrative Exclusion

AGE (calculated field)
ADMDT - BIRTHDT**READM**

During the timeframe from (computer to display dcddt) through (computer to display dcddt + 30 days) was there documentation of a readmission or direct transfer to an acute or non-acute inpatient care setting?

Non-acute inpatient care includes, but is not limited to rehabilitation units, skilled nursing facilities, respite care

1. Yes
2. No

READMDCDT

Enter the discharge date for the most recent direct transfer or readmission that occurred on (computer to display readmdt).

PTEXPIRE

Is there documentation that the patient expired during the timeframe from 01/01/2023 to 06/30/2023?

1. Yes
2. No

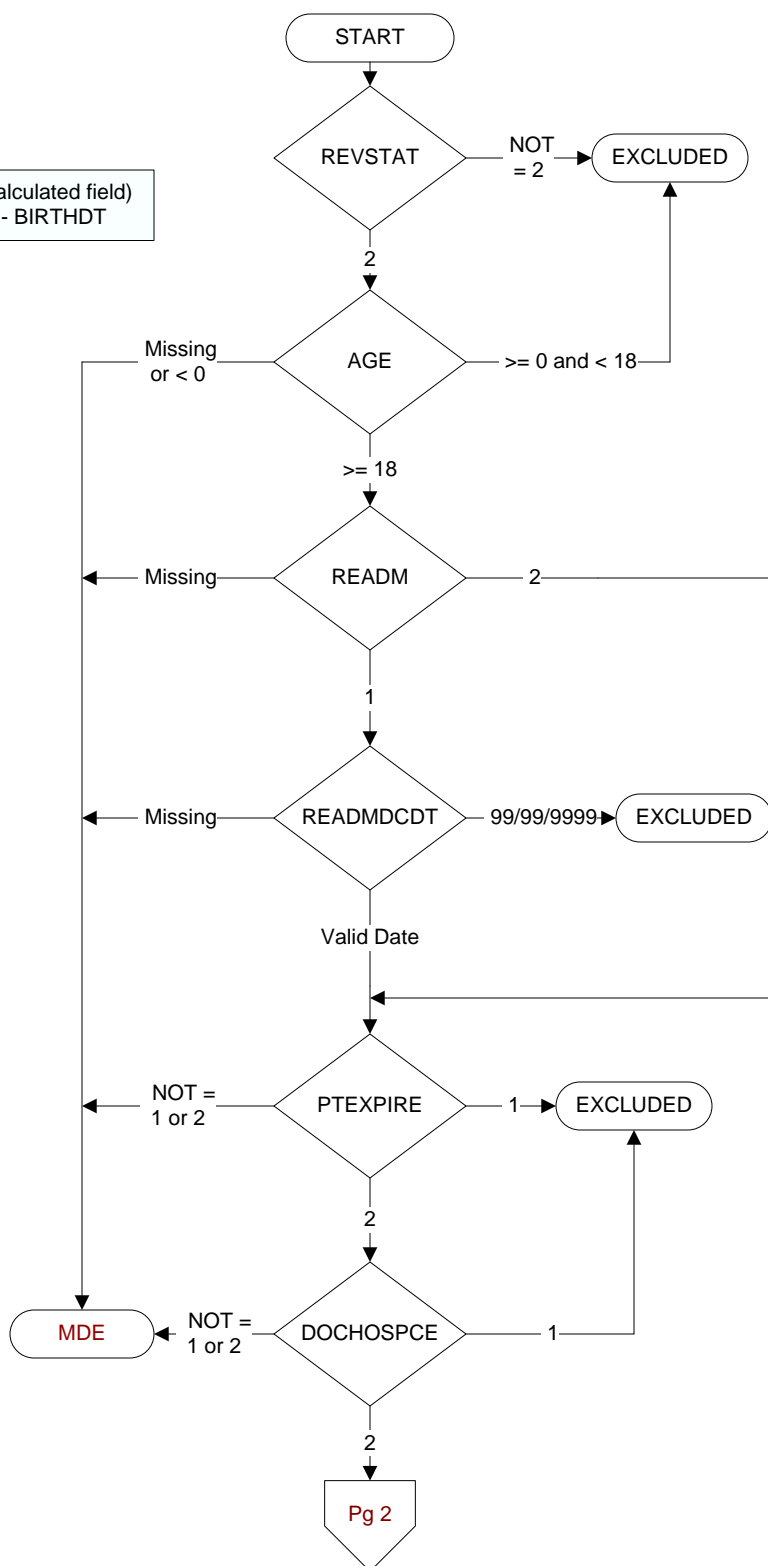
DOCHOSPCE

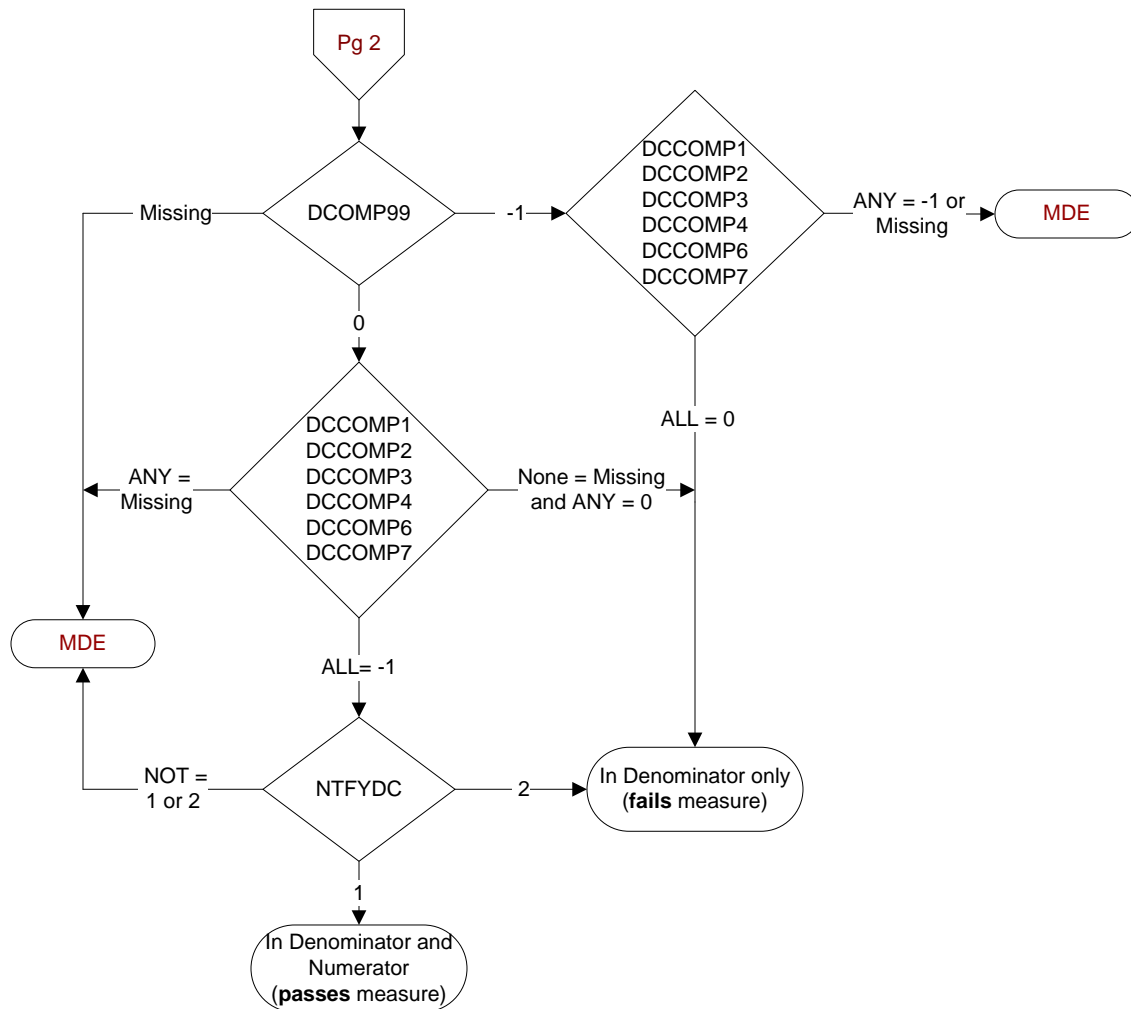
At any time during the year prior to [(If readm = 2 computer to display admdt) through (computer to display dcddt)] OR [(if readm = 1, computer to display readmdt) through (computer to display stdyend)] is one of the following documented in the medical record?

- The patient is enrolled in a VHA or community-based Hospice program
- The patient has a diagnosis of cancer of the liver, pancreas, or esophagus
- On the problem list it is documented the patient's life expectancy is less than 6 months?

1. Yes
2. No

**MDE = Missing or
Invalid Data Exclusion
(data error)**





For the discharge on (computer to display, if readm = 2 display dcdt OR if readm = 1 readmdcdt), is there documentation the discharge information includes the following required components?

Select all that apply:

- DCCOMP1.** The name of the practitioner responsible for the patient's care during the inpatient stay
- DCCOMP2.** Procedures or treatment provided (such as colonoscopy, surgery, wound debridement, mental health counseling)
- DCCOMP3.** Diagnoses at discharge
- DCCOMP4.** Current medication list
- DCCOMP6.** Testing results, documentation of pending tests OR no tests pending (refer to D/D rules)
- DCCOMP7.** Instructions for patient care post-discharge
- DCCOMP99.** None of the above

NTFYDC

For the discharge on (computer to display, if readm = 2, dcdt to dcdt + 2 days OR if readm = 1, readmdcdt to readmdcdt + 2 days), is there documentation in the medical record of receipt of discharge information?

- 1. Yes
- 2. No