

**Document Links:**[Sepsis Instrument](#)**REVSTAT**

REVIEW STATUS (not abstracted)

- 0. Abstraction has not begun
- 1. Abstraction in progress
- 2. Abstraction completed w/o errors
- 3. TVG failure (exclusion)
- 4. Record contains missing data or errors
- 5. Administrative exclusion from all measures

**AGE**

Calculated field – ADMDT - BIRTHDT

**DCDT**

Discharge date

**ADMDT**

Admission date

**TRNSFR**

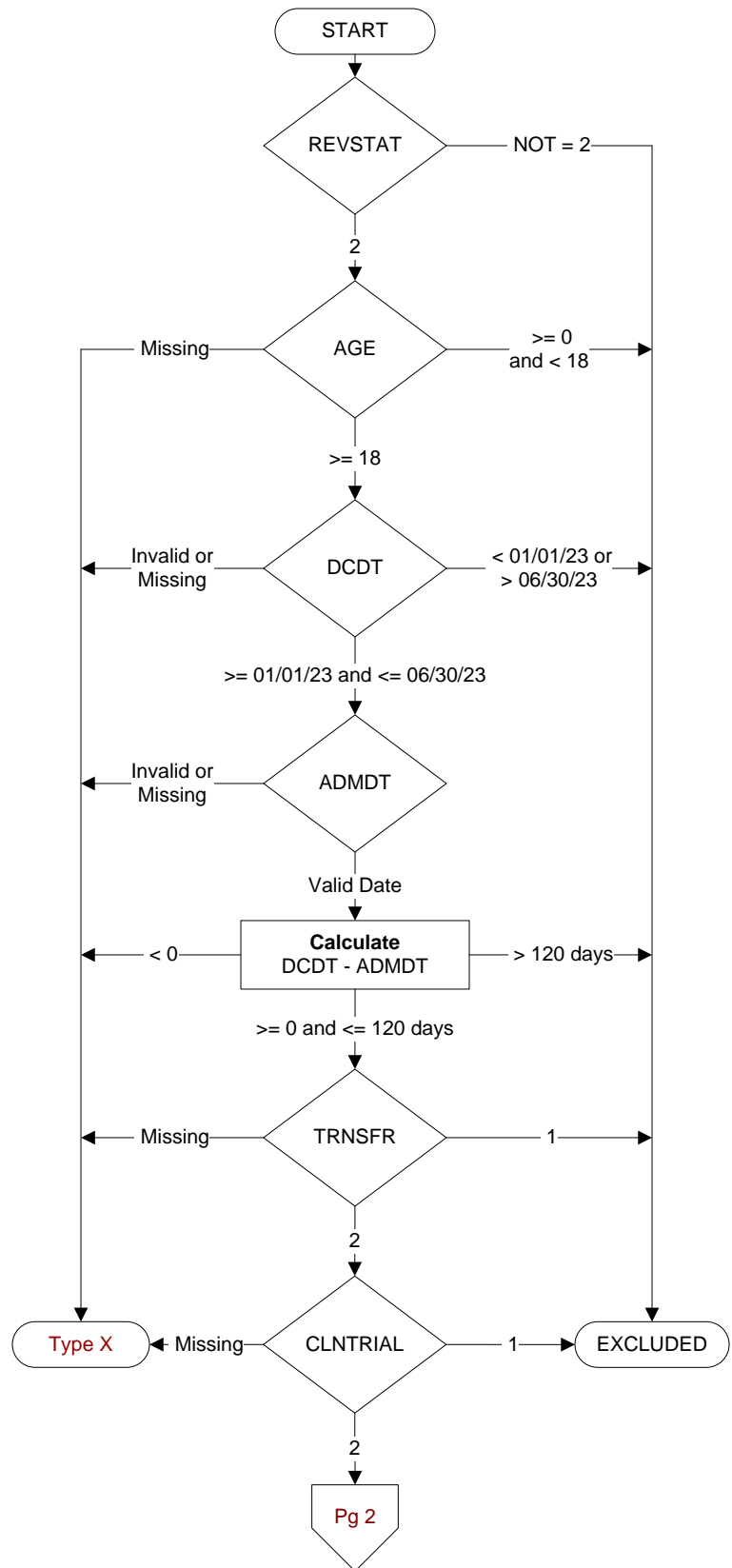
Is there documentation the patient was received as a transfer from an inpatient, outpatient or emergency/observation department of an outside hospital or from an ambulatory surgery center?

- 1. Yes
- 2. No

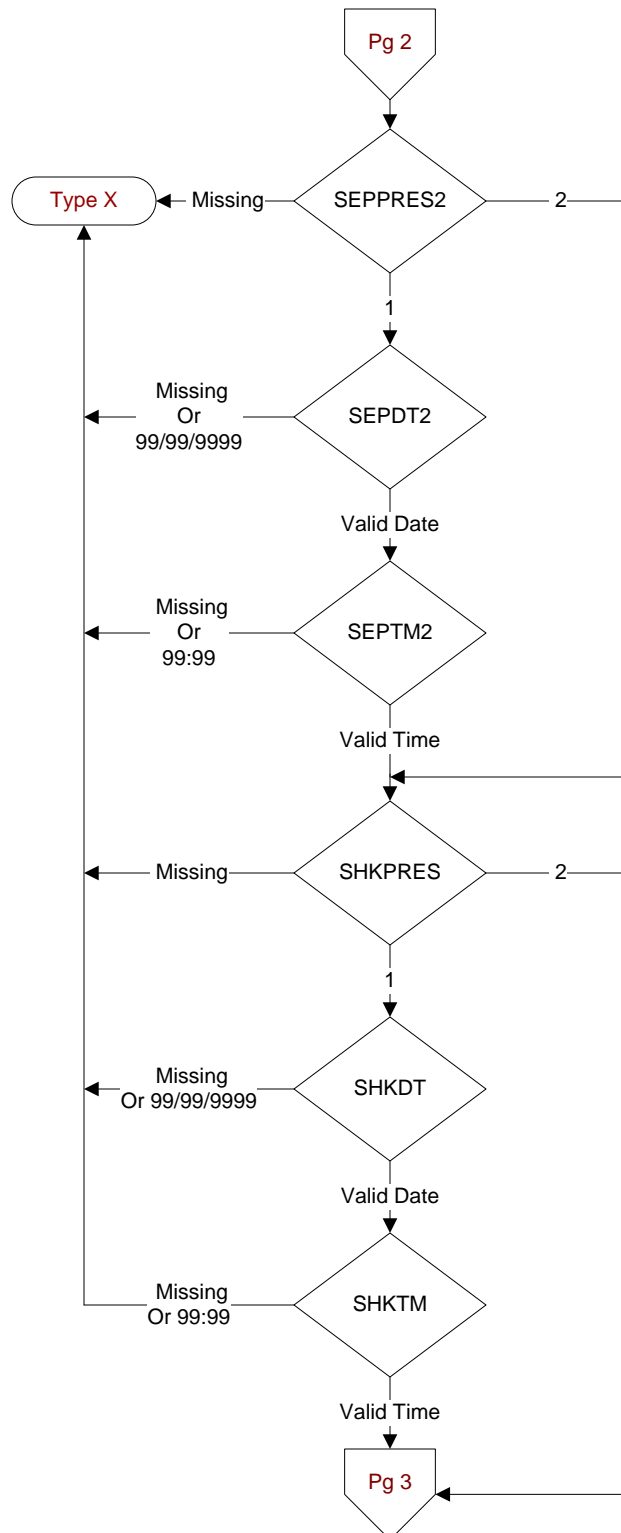
**CLNTRIAL**

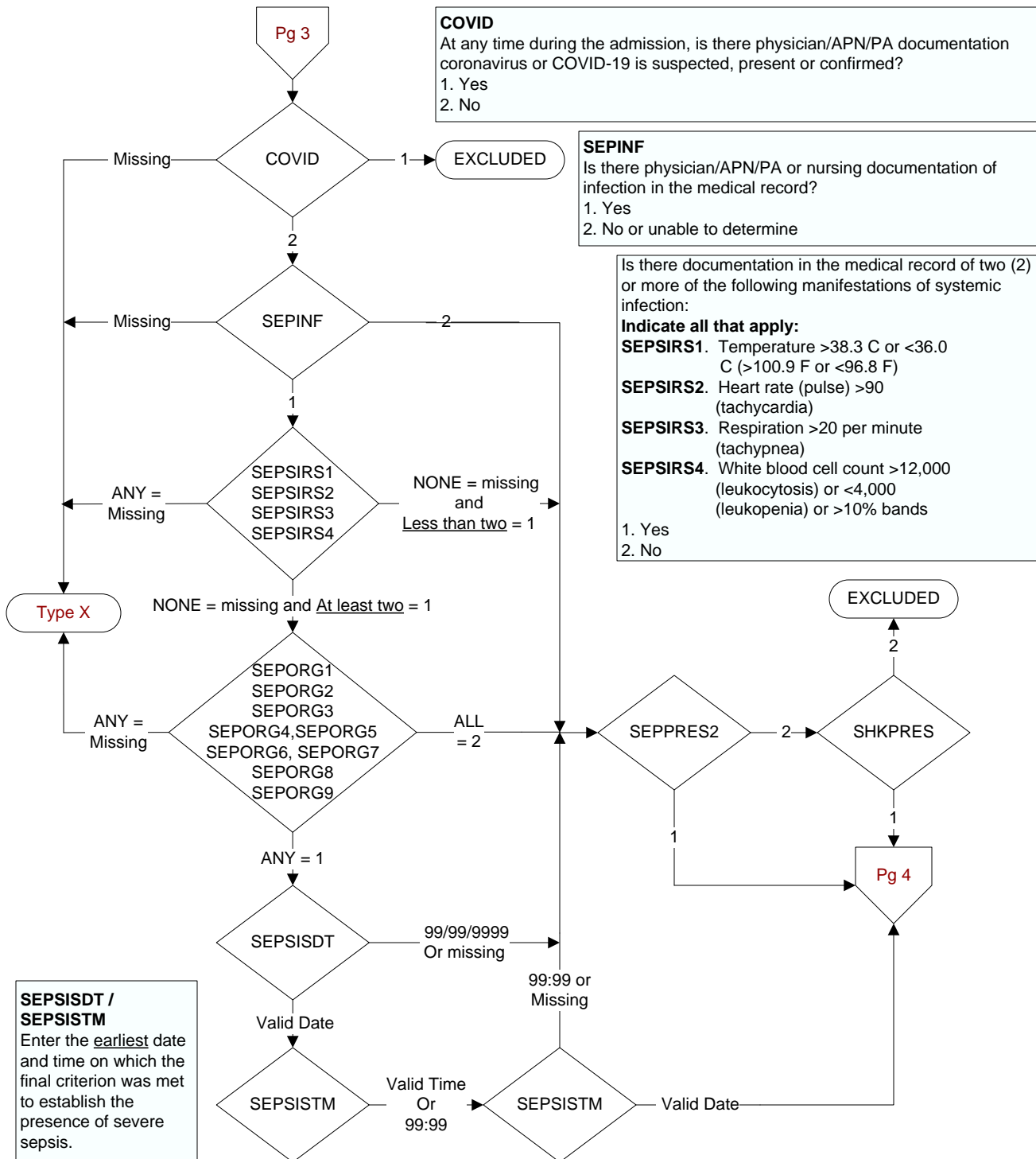
During this hospital stay, was the patient enrolled in a clinical trial in which patients with sepsis/septic shock were being studied?

- 1. Yes
- 2. No



|   |
|---|
| <b>SEPPRES2</b><br>Did a physician/APN/PA document presence of <u>severe sepsis</u> ?<br>1. Yes<br>2. No                            |
| <b>SEPDT2 / SEPTM2</b><br>Enter the earliest date and time a physician/APN/PA documented the presence of <u>severe sepsis</u>       |
| <b>SHKPRES</b><br>Is documentation of <u>septic shock</u> present in the record?<br>1. Yes<br>2. No, or unable to determine         |
| <b>SHKDT / SHKTM</b><br>Enter the earliest date and time a physician/APN/PA of the documented the presence of <u>septic shock</u> . |





Is there documentation of organ dysfunction in the medical record?

**Indicate all that apply:**

**SEPORG1.** Systolic blood pressure (SBP) < 90 mmHg or mean arterial pressure (MAP) < 65 mmHg

**SEPORG2.** Systolic blood pressure (SBP) decrease of more than 40 mmHg (see definitions/decision (D/D) rules)

**SEPORG3.** Acute respiratory failure as evidenced by a new need for invasive or non-invasive mechanical ventilation (see D/D rules)

**SEPORG4.** Creatinine > 2.0 (see D/D rules)

**SEPORG5.** Urine output < 0.5mL/kg/hour for 2 consecutive hours (see D/D rules)

**SEPORG6.** Total bilirubin > 2 mg/dL (34.2 mmol/L)

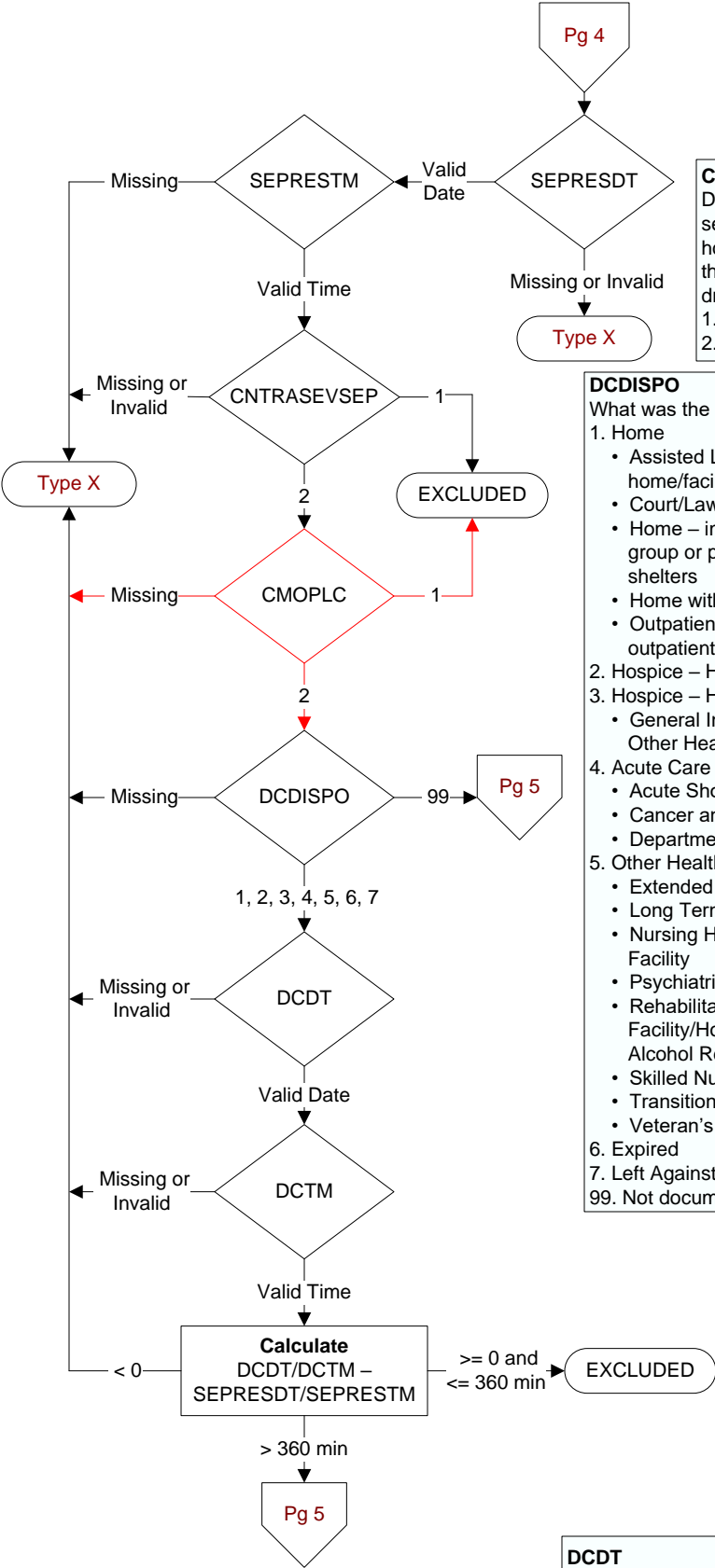
**SEPORG7.** Platelet count < 100,000

**SEPORG8.** INR > 1.5 or aPTT > 60 seconds (see D/D rules)

**SEPORG9.** Lactate > 18.0 mg/dL (>2 mmol/L)

1. Yes

2. No



**SEPRESDT**  
Computer to auto-fill earliest valid date entered in sepd2, shkdt, or sepsidt.

**SEPRESTM**  
Computer to auto-fill earliest valid time entered in septm2, shktm, or sepsistm.

**CNTRASEVSEP**  
During the timeframe from (computer to display sepresdt/ seprestm - 6 hours) to (computer to display sepresdt/seprestm + 6 hours) is there physician/APN/PA or nursing documentation that the patient or authorized patient advocate refused either a blood draw, IV fluid administration, or IV antibiotic administration?  
1. Yes  
2. No or unable to determine

**DCDISPO**  
What was the patient's discharge disposition on the day of discharge?  
1. Home  
• Assisted Living Facilities (ALFs) – includes assisted living care at nursing home/facility  
• Court/Law Enforcement – includes detention facilities, jails, and prison  
• Home – includes board and care, domiciliary, foster or residential care, group or personal care homes, retirement communities, and homeless shelters  
• Home with Home Health Services  
• Outpatient Services including outpatient procedures at another hospital, outpatient Chemical Dependency Programs and Partial Hospitalization  
2. Hospice – Home (or other home setting as listed in #1 (above)  
3. Hospice – Health Care Facility  
• General Inpatient and Respite, Residential and Skilled Facilities, and Other Health Care Facilities  
4. Acute Care Facility  
• Acute Short Term General and Critical Access Hospitals  
• Cancer and Children's Hospitals  
• Department of Defense and Veteran's Administration Hospitals  
5. Other Health Care Facility  
• Extended or Immediate Care Facility (ECF/ICF)  
• Long Term Acute Care Hospital (LTACH)  
• Nursing Home or Facility including Veteran's Administration Nursing Facility  
• Psychiatric Hospital or Psychiatric Unit of a Hospital  
• Rehabilitation Facility including, but not limited to: Inpatient Rehabilitation Facility/Hospital, Rehabilitation Unit of a Hospital, Chemical Dependency/ Alcohol Rehabilitation Facility  
• Skilled Nursing Facility (SNF), Sub-Acute Care or Swing Bed  
• Transitional Care Unit (TCU)  
• Veteran's Home  
6. Expired  
7. Left Against Medical Advice/AMA  
99. Not documented or unable to determine

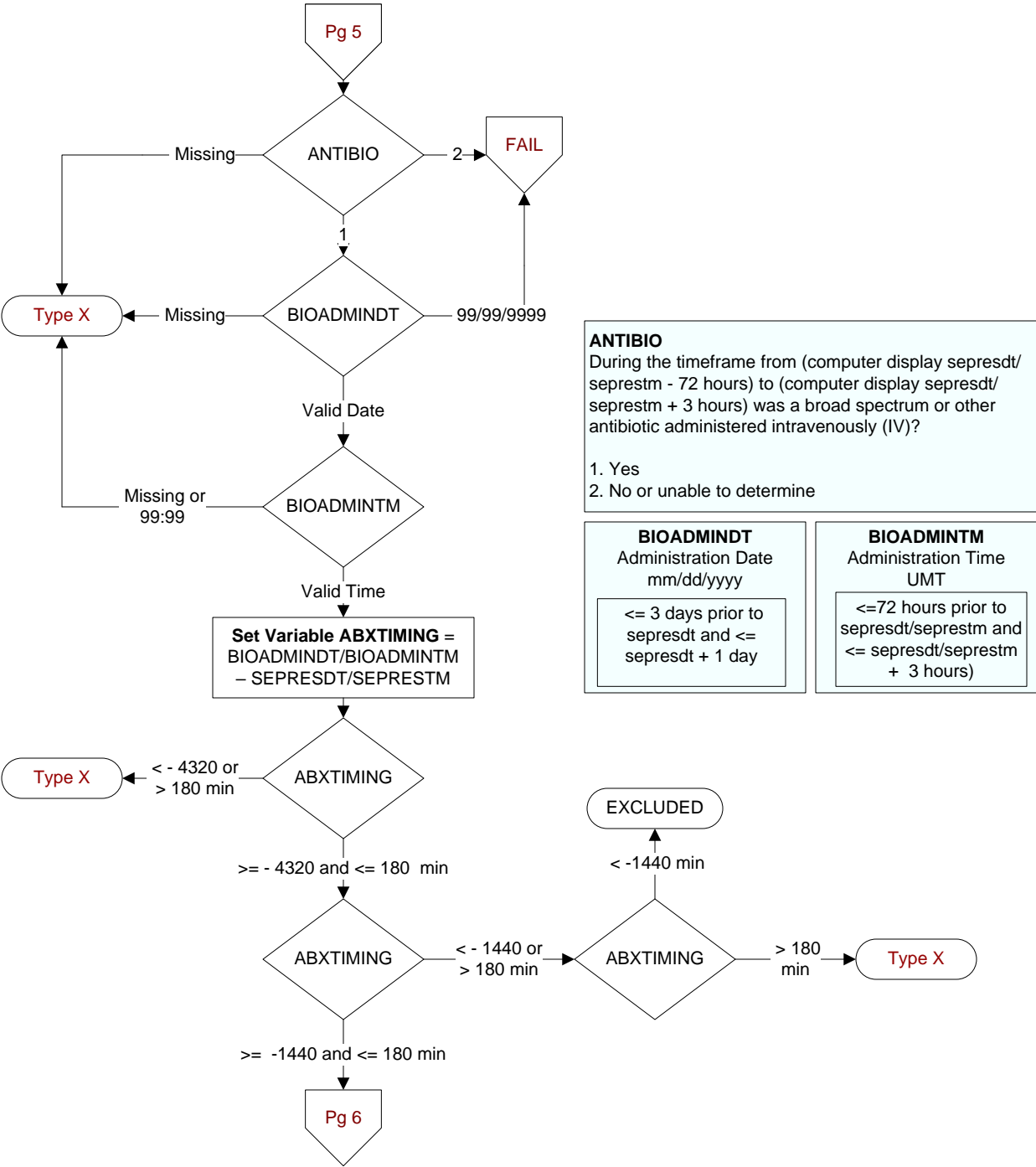
**CMOPLC**  
During the timeframe from (computer to display sepresdt/ seprestm - 6 hours) to (computer to display sepresdt/ seprestm + 6 hours) is there physician/APN/PA documentation of comfort measures only or palliative care (see Inclusion terms below)?

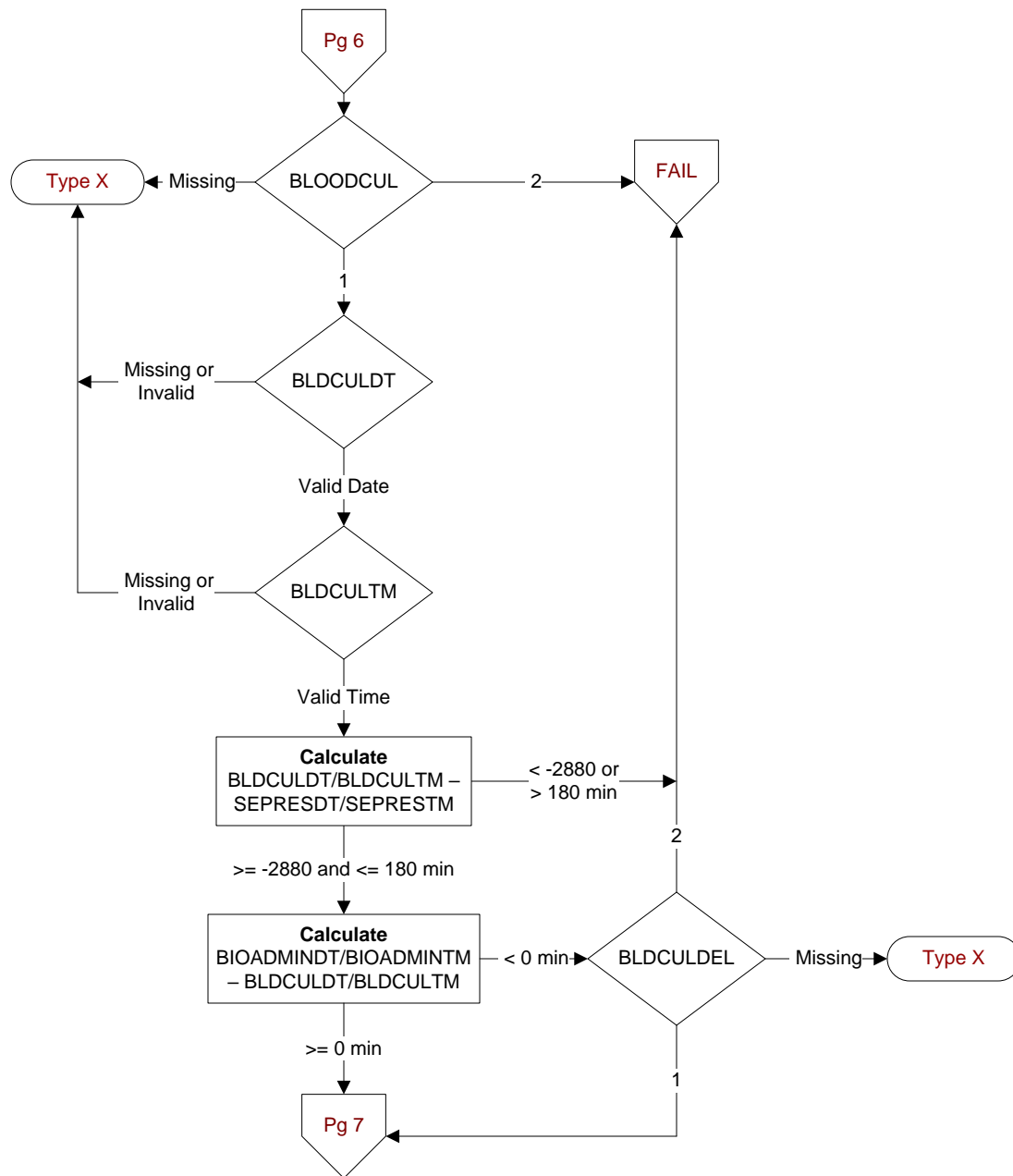
| Inclusion (Only acceptable terms) |                     |
|-----------------------------------|---------------------|
| Brain death/dead                  | Hospice Care        |
| Comfort care                      | Organ harvest       |
| Comfort measures                  | Palliative Care     |
| Comfort measures only (CMO)       | Palliative Consult  |
| Comfort only                      | Terminal care       |
| DNR-CC                            | Terminal extubation |
| End of life care                  | Withdraw care       |
| Hospice                           | Withhold care       |

1. Yes  
2. No

**DCDT**  
Discharge date:

**DCTM**  
Discharge time:



**BLOODCUL**

During the time frame from [(If bioadmintd/ bioadmintm - sepresdt/seprestm >= -1440 and < 0, computer to display sepresdt/ seprestm - 48 hours to sepresdt/seprestm + 3 hours); else computer to display (earliest bioadmintd/ bioadmintm- 24 hours to sepresdt/ seprestm + 3 hours)], was a blood culture collected?

1. Yes
2. No or unable to determine

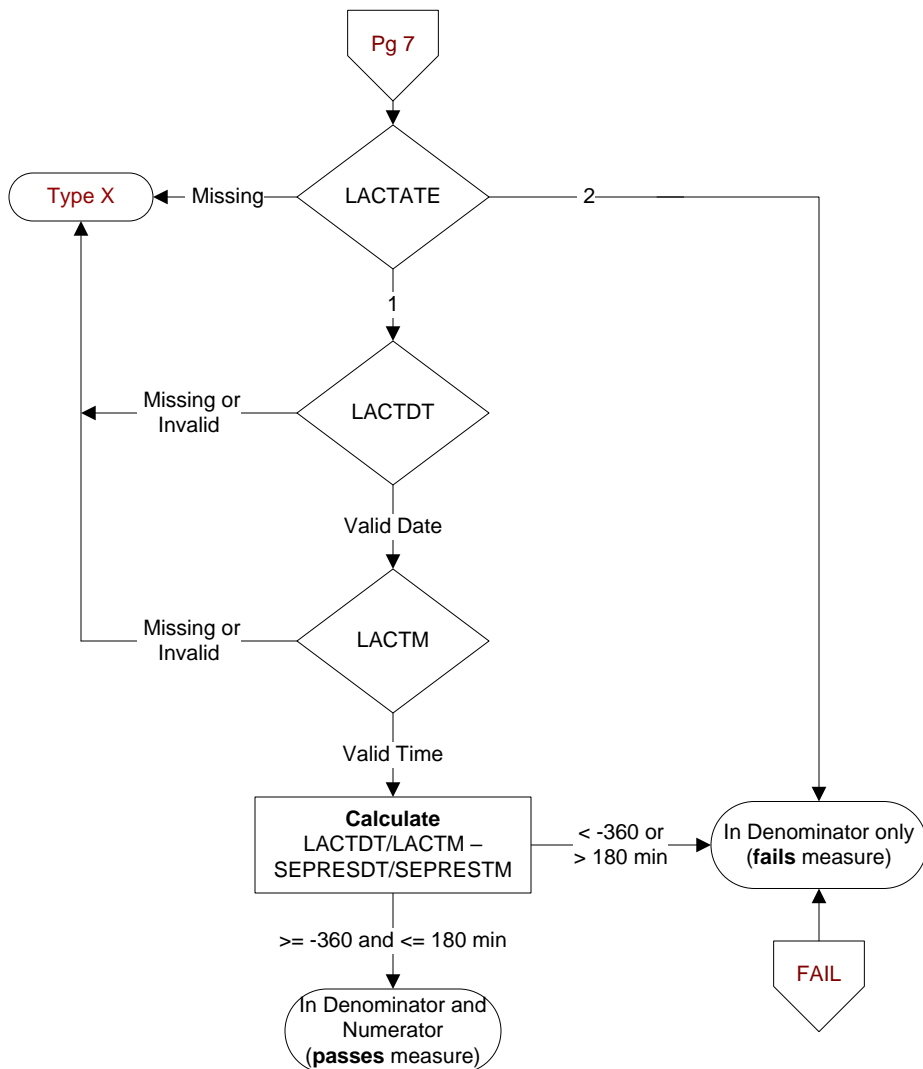
**BLDCULDT / BLDCULTM**

During the specified timeframe, enter the date and time the blood culture was collected.

**BLDCULDEL**

Is there documentation supporting an acceptable delay in collecting a blood culture?

1. Yes
2. No or unable to determine

**LACTATE**

During the timeframe from (computer display sepresdt/seprestm - 6 hours to sepresdt/seprestm + 3 hours) was an initial lactate level drawn (or collected)?

1. Yes
2. No

**LACTDT / LACTM**

Enter the date and time the initial lactate level was drawn (or collected).