

**Document Links:**[Global Measures Instrument](#)[Inpt MedRecon Module](#)**COHORT**

(rcvd on pull list)

70. Global Measures

**REVSTAT**

REVIEW STATUS (not abstracted)

- 0. Abstraction has not begun
- 1. Abstraction in progress
- 2. Abstraction completed w/o errors
- 3. Cohort validation failure
- 4. Record contains missing data
- 5. Administrative exclusion

**ADMDT (GM)**

Admission date:

**DCDT (GM)**

Discharge date:

**REVPTMED1-9 (IP MedRec)**

Upon admission or during the 24 hours after admission, is there evidence in the medical record of a medication list for review note related to the admission that included all of the following components?

**Essential Medication List Component****REVPTMED1. Active VA Prescriptions**

- 1. Yes
- 2. No

**REVPTMED2. Remote Active VA Prescriptions**

- 1. Yes
- 2. No

**REVPTMED3. Non-VA Medications**

- 1. Yes
- 2. No

**REVPTMED4. Expired VA Prescriptions (see D/D rules)**

- 1. Yes
- 2. No

**REVPTMED5. Discontinued VA Prescriptions (see D/D rules)**

- 1. Yes
- 2. No

**REVPTMED6. Any Pending Medication Orders**

- 1. Yes
- 2. No

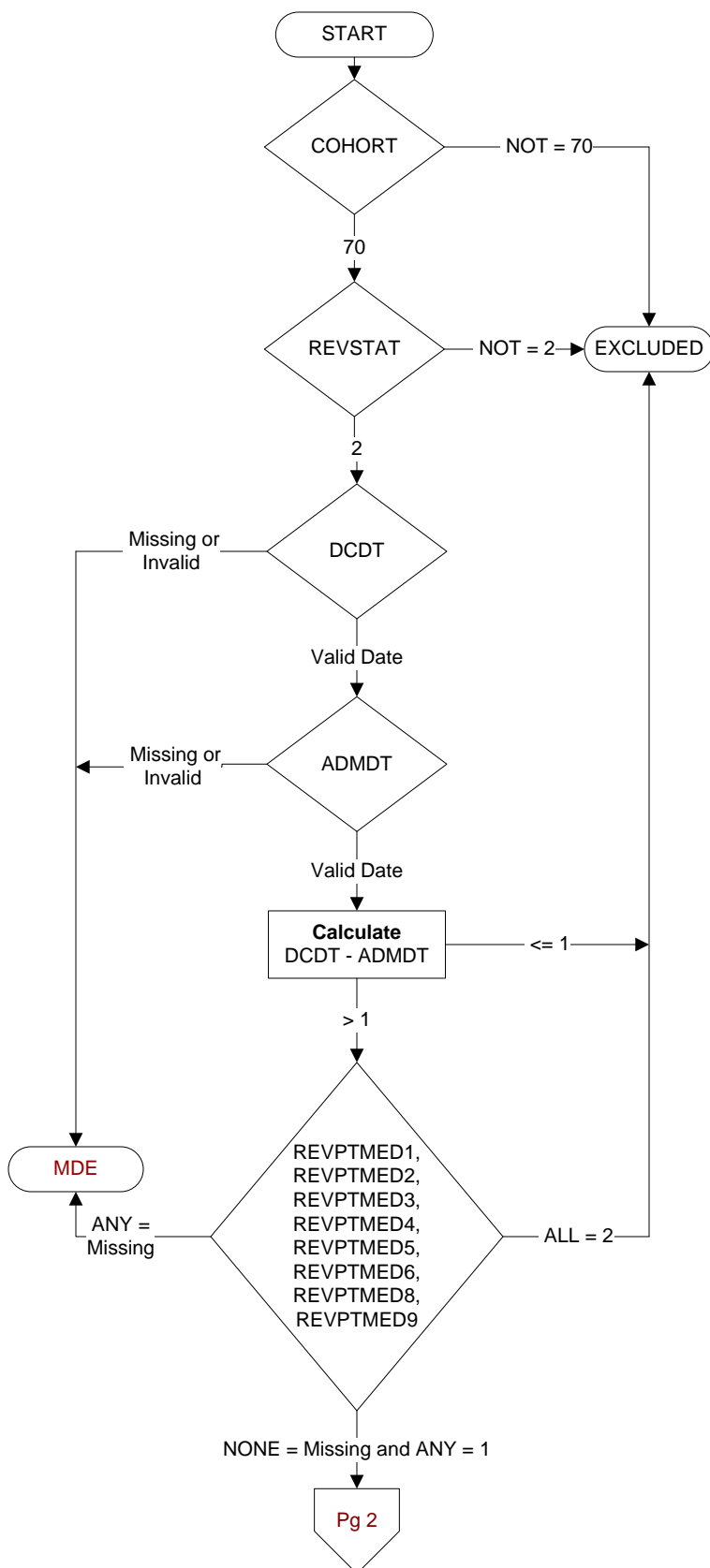
**REVPTMED8. Inpatient Medications**

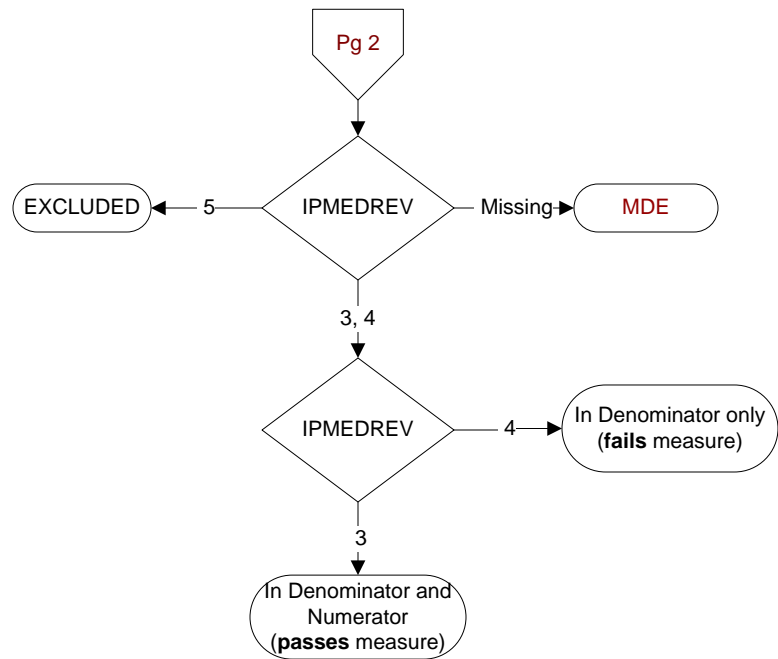
- 1. Yes
- 2. No

**REVPTMED9. Allergies (both Remote Facility AND Local Facility)**

- 1. Yes
- 2. No

**MDE = Missing or  
Invalid Data Exclusion  
(data error)**





**IPMEDREV (IP MedRec)**

Upon admission or during the 24 hours after admission, is there documentation the available medication list components were reviewed with the patient/caregiver?

3. Yes

4. No: There is no documentation that the available essential medication list components were reviewed with the patient/caregiver

5. Documentation the patient/caregiver refused or was unable to participate in review of essential medication list components