

**Document Links:**[CGPI Validation Module](#)[CGPI CVD Module](#)**COHORT**

16. AMI - Outpatient visit  
 48. Female, age 20-69  
 50. Random Sample  
 51. Random Sample MH  
 54. Frail/Elderly  
 60. DM Outpatient

**FEFLAG** (rcvd on pull list)  
 FE case flagged for CGPI  
 review / scoring?

0. No  
 1. Yes

**OTHCARE** (Validation)

Is there evidence in the medical record that  
 within the past two years, the patient refused  
 VHA Primary Care and is receiving ONLY his/  
 her primary care in a non-VHA setting?

1. yes  
 2. no

**REVSTAT**

REVIEW STATUS (not abstracted)  
 0. Abstraction has not begun  
 1. Abstraction in progress  
 2. Abstraction completed w/o errors  
 3. TVG failure (exclusion)  
 4. Record contains missing data  
 5. Administrative exclusion f

**HOSPICE** (Validation)

During the past year is there documentation in  
 the medical record the patient is enrolled in a  
 VHA or community-based hospice program?

1. Yes  
 2. No

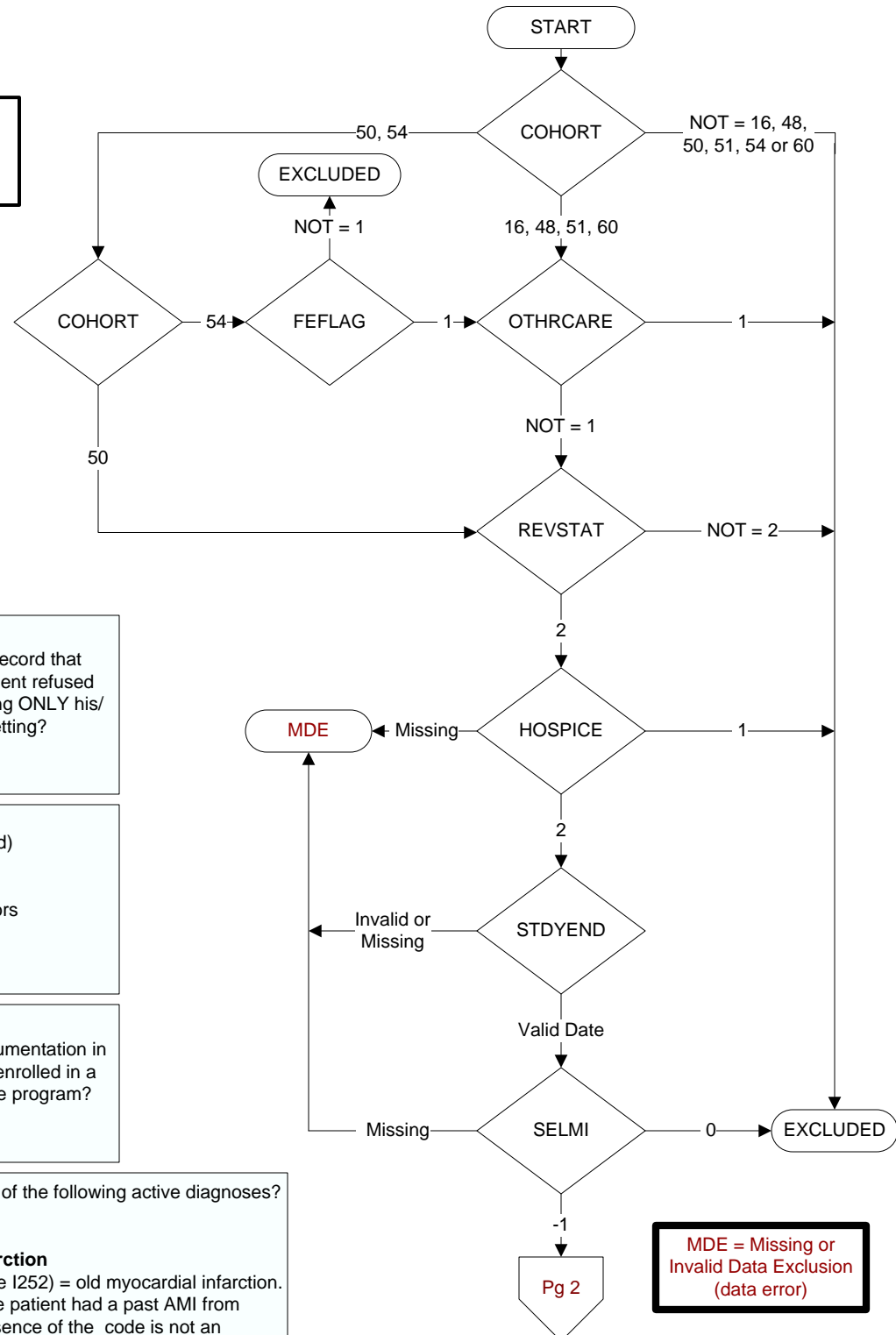
Did the patient have one or more of the following active diagnoses?  
 (Validation)

**SELM1** 4 = Old Myocardial Infarction

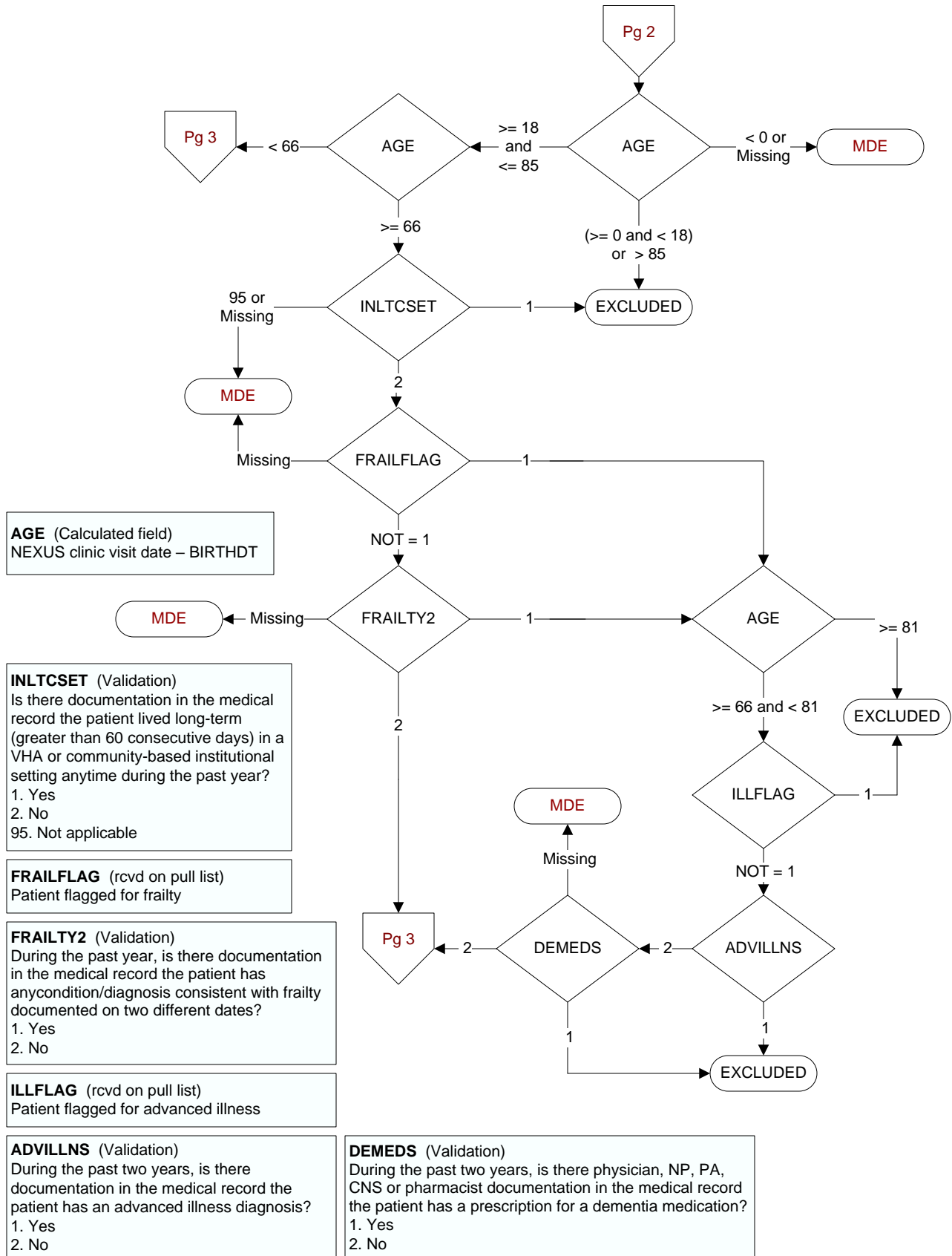
ICD-9-CM code 412 (ICD-10 code I252) = old myocardial infarction.  
 The abstractor may determine the patient had a past AMI from  
 clinician documentation, and presence of the code is not an  
 absolute requirement

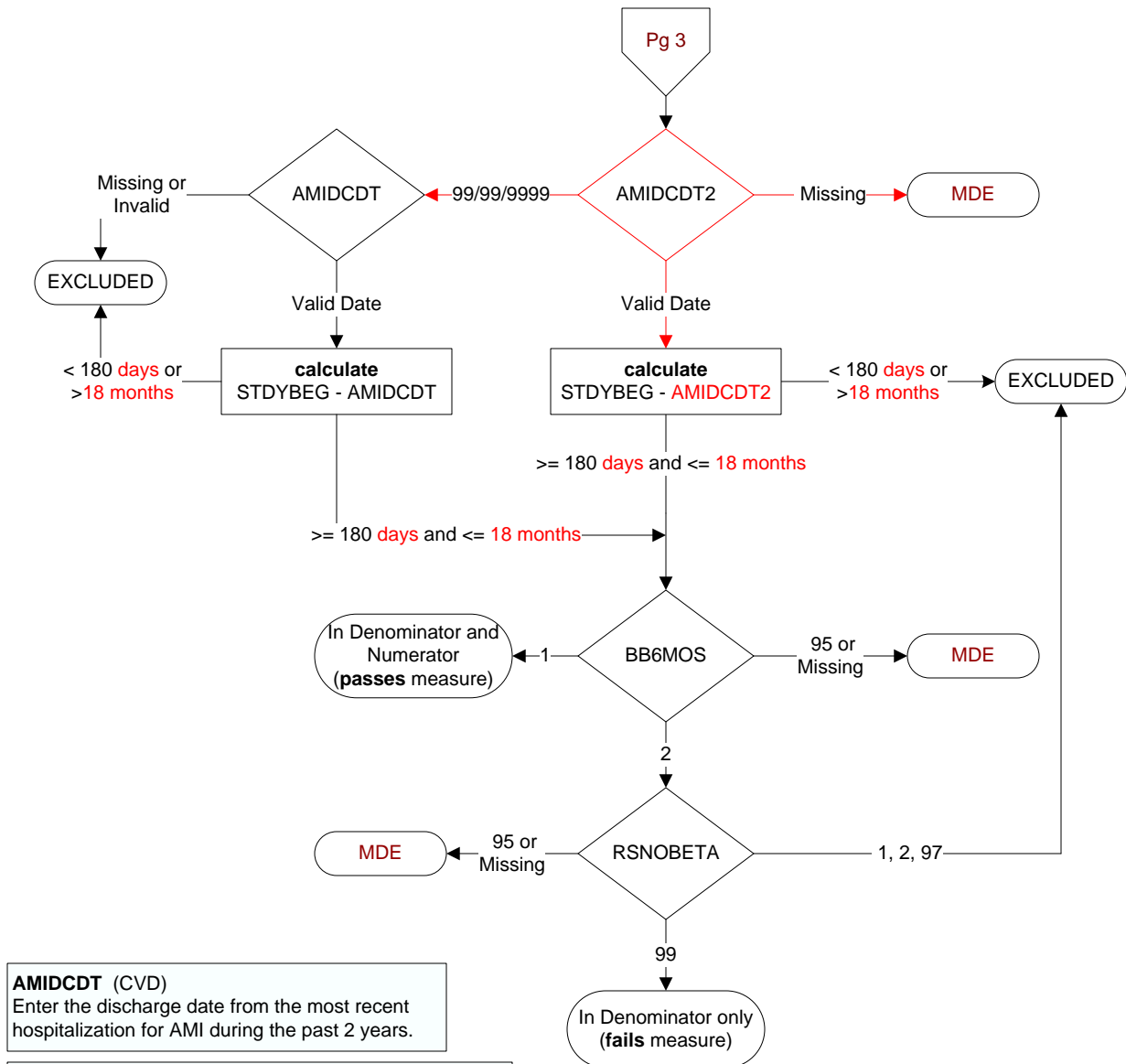
-1 Yes  
 0 No

**STDYEND** (rcvd on pull list).  
 Last day of study interval



**MDE = Missing or  
 Invalid Data Exclusion  
 (data error)**





**AMIDCDT (CVD)**  
Enter the discharge date from the most recent hospitalization for AMI during the past 2 years.

**AMIDCDT2 (CVD)**  
Enter the date of the discharge associated with the first episode of AMI during the timeframe from (computer to display stdybeg -18 months to amidcdt – 1 day).

**BB6MOS (CVD)**  
Is there documentation in the medical record the patient was on a beta-blocker continuously during the timeframe from (computer to display the earliest of amidcdt or amidcdt2 + 179 days)?  
**Examples of beta-blockers include, but are not limited to:**

- metoprolol succinate or tartrate
- carvedilol
- atenolol
- nadolol
- propranolol
- combination of beta-blockers with other drugs

1. Yes  
2. No  
95. Not applicable

**RSNOBETA (CVD)**  
On (computer to display most recent of amidcdt or frstdcdt), does the record document any of the following reasons for not prescribing a beta-blocker?

1. Beta-blocker allergy
2. Bradycardia (heart rate less than 60 bpm)
95. Not applicable
97. Other reasons documented by a physician/APN/PA or pharmacist for not prescribing a beta-blocker
99. No documented reason