

Document Links:

[HBPC Instrument](#)

REVSTAT

REVIEW STATUS (not abstracted)
 0. Abstraction has not begun
 1. Abstraction in progress
 2. Abstraction completed w/o errors
 3. Cohort validation failure (exclusion)
 4. Record contains missing data
 5. Administrative Exclusion

COHORT

69 – Home Based Primary Care

HCSTATUS (HBPC)

Counting from the most recent HBPC encounter within the study interval, enter the patient's status in regard to HBPC admission:
 2. HBPC admission greater than or equal to 30 days but less than or equal to 1 year
 3. HBPC admission greater than one year (>365 days from the admission date)

INPTADM (HBPC)

During the time frame from (computer display admisd + 30 days), did the record document the patient was admitted to an acute or non-acute inpatient facility?
 1. Yes
 2. No

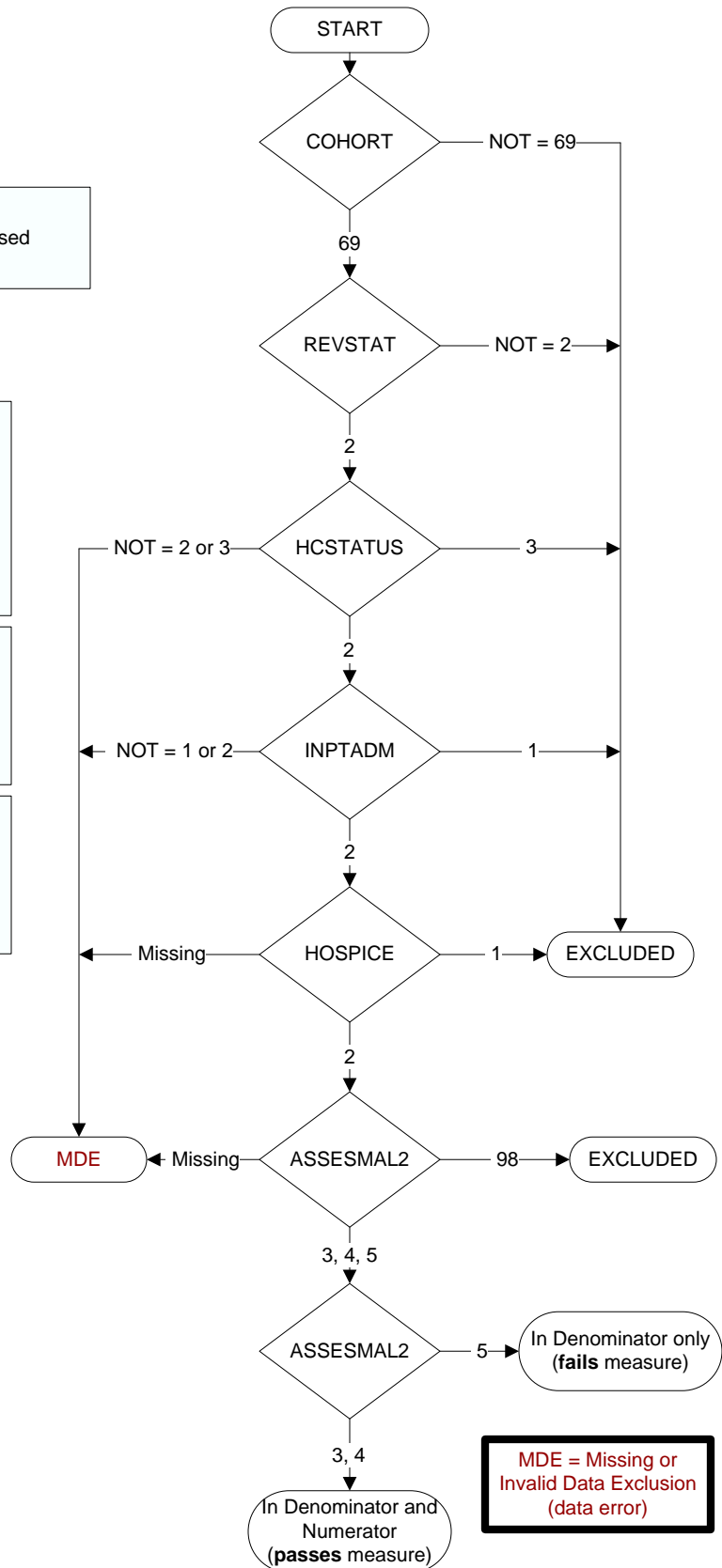
HOSPICE

During the past year is there documentation in the medical record the patient is enrolled in a VHA or community-based hospice program?
 1. Yes
 2. No

ASSESMAL2 (HBPC)

During the time frame from (if nuthyd = 5, computer display (admisdt – 30 days to admisdt + 30 days); else display (On nuthydt), was an assessment for malnutrition completed by a HBPC Registered Dietitian (RD) or Registered Dietician Nutritionist (RDN) during the initial face-to-face encounter in the veteran's home or clinical video telehealth (CVT) encounter?

- 1. Yes, the HBPC RD or RDN initial nutrition assessment contains an assessment for malnutrition that was completed by a RD or RDN during the initial **face-to-face** encounter
- 2. Yes, the HBPC RD or RDN initial nutrition assessment contains an assessment for malnutrition that was completed by a RD or RDN during the initial **CVT** encounter
- 3. No, the HBPC RD or RDN initial nutrition assessment does not contain an assessment for malnutrition completed by a RD or RDN during a face-to-face or CVT encounter
- 98. No, an assessment for malnutrition was not completed by the HBPC RD or RDN and the initial nutrition assessment contains documentation that the patient/caregiver/guardian refused or declined to participate in the assessment for malnutrition



MDE = Missing or Invalid Data Exclusion (data error)