

**Document Links:**[HBPC Instrument](#)**REVSTAT**

REVIEW STATUS (not abstracted)

0. Abstraction has not begun
1. Abstraction in progress
2. Abstraction completed w/o errors
3. Cohort validation failure (exclusion)
4. Record contains missing data
5. Administrative Exclusion

**COHORT**

69 – Home Based Primary Care

**HCSTATUS** (HBPC)

Counting from the most recent HBPC encounter within the study interval, enter the patient's status in regard to HBPC admission:

2. HBPC admission greater than or equal to 30 days but less than or equal to 1 year
3. HBPC admission greater than one year (>365 days from the admission date)

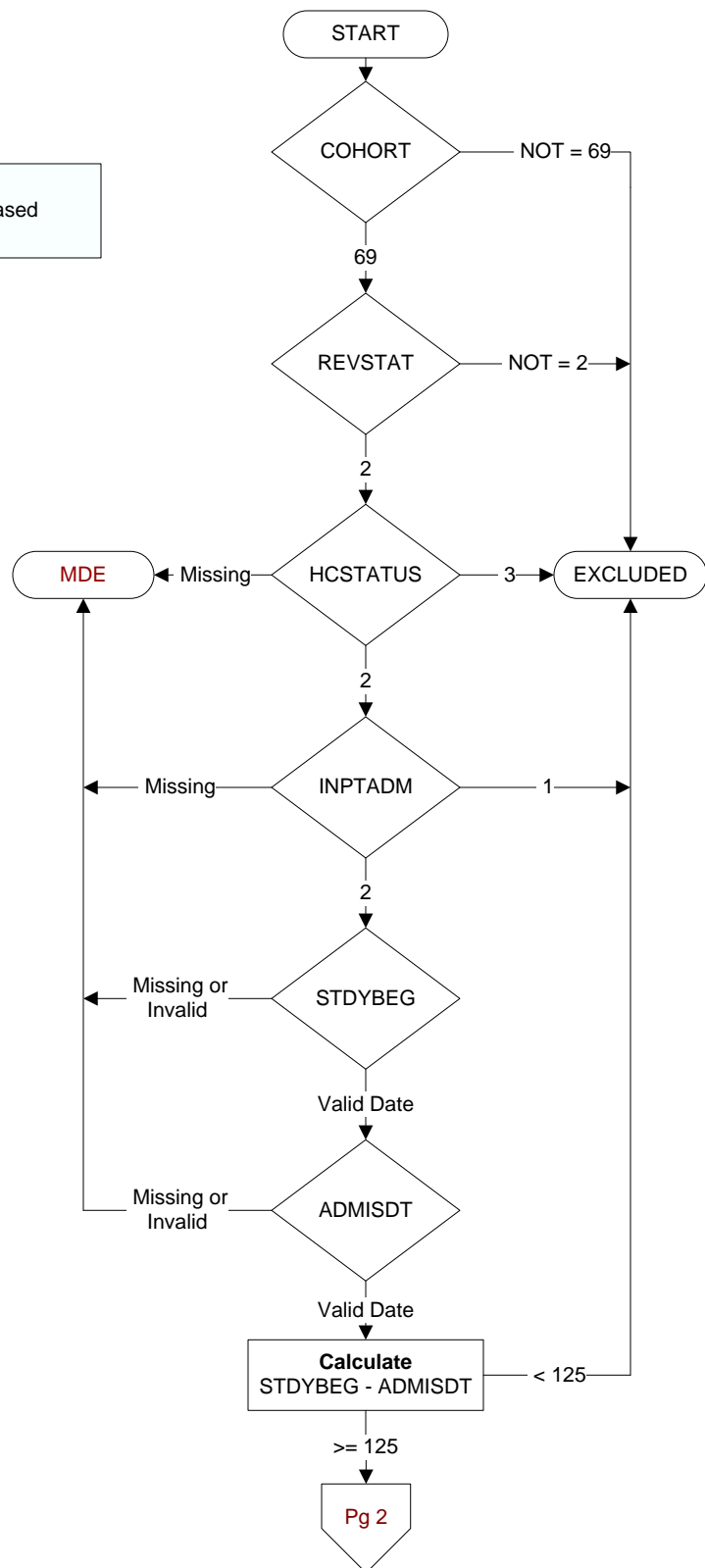
**INPTADM** (HBPC)

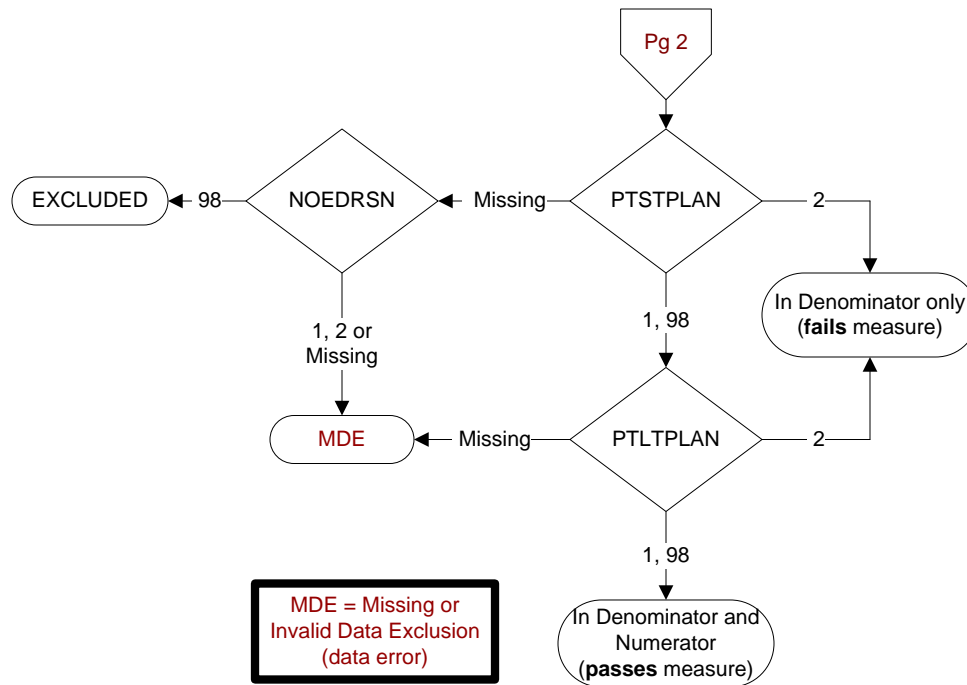
During the time frame from (computer display admisdt to admisdt + 30 days), did the record document the patient was admitted to an acute or non-acute inpatient facility?

1. Yes
2. No

**STDYBEG**

Begin date of study interval. Received on pull list.

**ADMISDT** (HBPC)Enter the HBPC admission date. **Admission date is date of the progress note documenting admission.**

**PTSTPLAN (HBPC)**

During the timeframe from (computer to display admisdt – 30 days to admisdt + 125 days), did the HBPC social worker document the plan for urgent/emergent care by either documenting the plan or documenting the patient/caregiver/guardian's choice to decline making a plan?

1. Yes, HBPC social worker documented the plan for urgent/emergent care
2. No, HBPC social worker did not document the plan for urgent/emergent care
98. Patient/caregiver/guardian refused/declined to make a plan for urgent/emergent care

**NOEDRSN (HBPC)**

During the timeframe from (computer to display admisdt – 30 days to admisdt + 30 days), is there documentation by a HBPC social worker of a reason why the education about alternative caregiving/placement plans did not take place?

1. Yes
2. No
98. Patient/caregiver/guardian refused

**PTLTPLAN (HBPC)**

During the timeframe from (computer to display admisdt – 30 days to admisdt + 125 days), did the HBPC social worker document the plan for long term care planning by either documenting the plan or documenting the patient/caregiver/guardian's choice to decline making a plan?

1. Yes, HBPC social worker documented the plan for long term care
2. No, HBPC social worker did not document the plan for long term care
98. Patient/caregiver/guardian refused/declined to make a plan for long term care