

Document Links:[CGPI Validation Module](#)[CGPI PI Module](#)[CGPI MH Module](#)**COHORT**

16. AMI - Outpatient visit
 48. Female, age 20-69
 50. Random Sample
 51. Random Sample MH
 54. Frail/Elderly
 60. DM Outpatient

FEFLAG (rcvd on pull list)

FE case flagged for CGPI review / scoring?

0. No
 1. Yes

OTHCARE (Validation)

Is there evidence in the medical record that within the past two years, the patient refused VHA Primary Care and is receiving ONLY his/her primary care in a non-VHA setting?

1. yes
 2. no

REVSTAT

REVIEW STATUS (not abstracted)

0. Abstraction has not begun
 1. Abstraction in progress
 2. Abstraction completed w/o errors
 3. TVG failure (exclusion)
 4. Record contains missing required answers
 5. Administrative exclusion from all measures

HOSPICE (Validation)

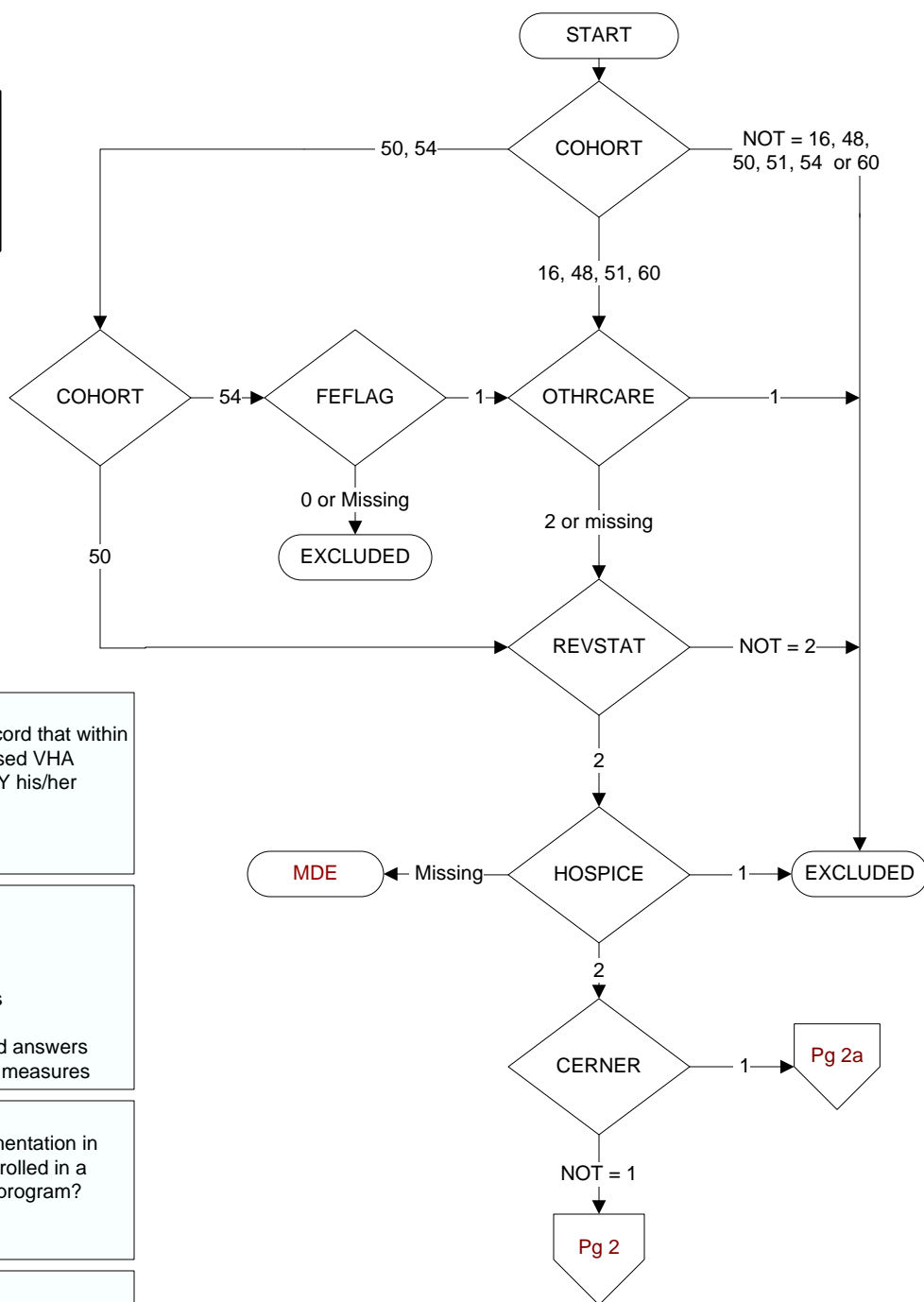
During the past year is there documentation in the medical record the patient is enrolled in a VHA or community-based hospice program?

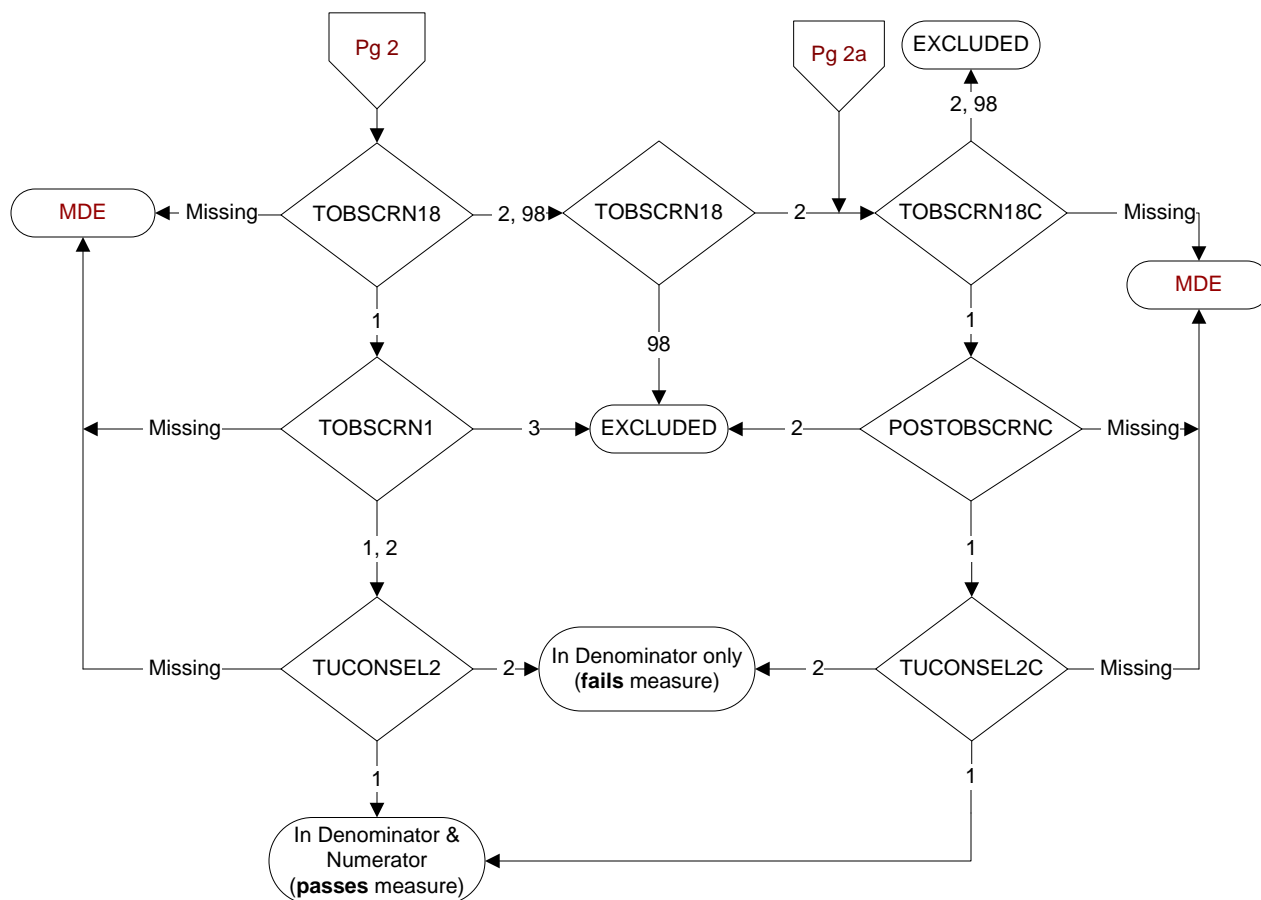
1. Yes
 2. No

CERNER (system flag)

Flag indicating facility is using the Cerner eHR

MDE = Missing or
 Invalid Data Exclusion
 (data error)



**TOBSCRN18 (PI)**

During the past year was the patient screened for tobacco use by an acceptable provider using the **National Clinical Reminder for Tobacco Use?**

1. Yes
2. No

98. Patient declined to answer National Clinical Reminder for Tobacco Use screening questions

TOBSCRN1 (PI)

Enter the response to Tobacco Use Screening question #1 "Do you smoke cigarettes, or use tobacco every day, some days, or not at all?"

1. Every Day
2. Some Days
3. Not at all

TUONSEL2 (PI)

During the past year was the patient advised to quit smoking or stop using tobacco using the **National Clinical Reminder for Tobacco Use?**

1. Yes
2. No

TOBSCRN18C (PI module)

During the past year, was the patient screened for tobacco use by an acceptable provider?

1. Yes
2. No

98. Patient declined to answer screening questions

POSTOBSCRNC (PI module)

Was the tobacco screening done on (computer to display tobscrndtc) positive for tobacco use?

1. Yes
2. No

TUONSEL2C (PI module)

During the past year was the patient advised to quit smoking or stop using tobacco?

1. Yes
2. No