

Document Links:

[Cataract Surgery Instrument](#)

**REVSTAT**  
REVIEW STATUS (not abstracted)  
0. Abstraction has not begun  
1. Abstraction in progress  
2. Abstraction completed w/o errors  
3. TVG failure (exclusion)  
4. Record contains missing required answers  
5. Administrative exclusion from all measures

**STDYBEG** (rcvd on pull list)  
Begin date of study interval

**STDYEND** (rcvd on pull list)  
End date of study interval

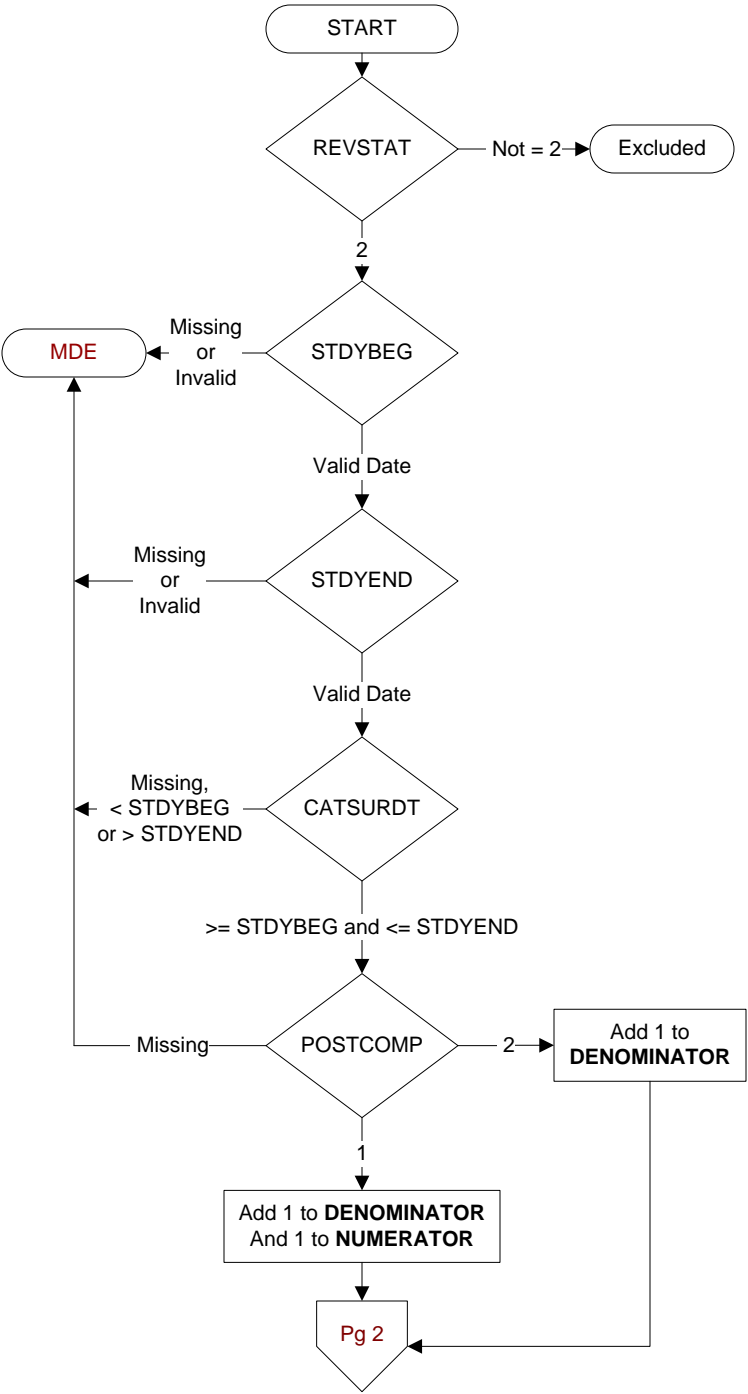
**CATSURDT**  
Enter the date of the earliest cataract surgery performed at this VAMC during the timeframe from (computer display stdybeg to stdyend).

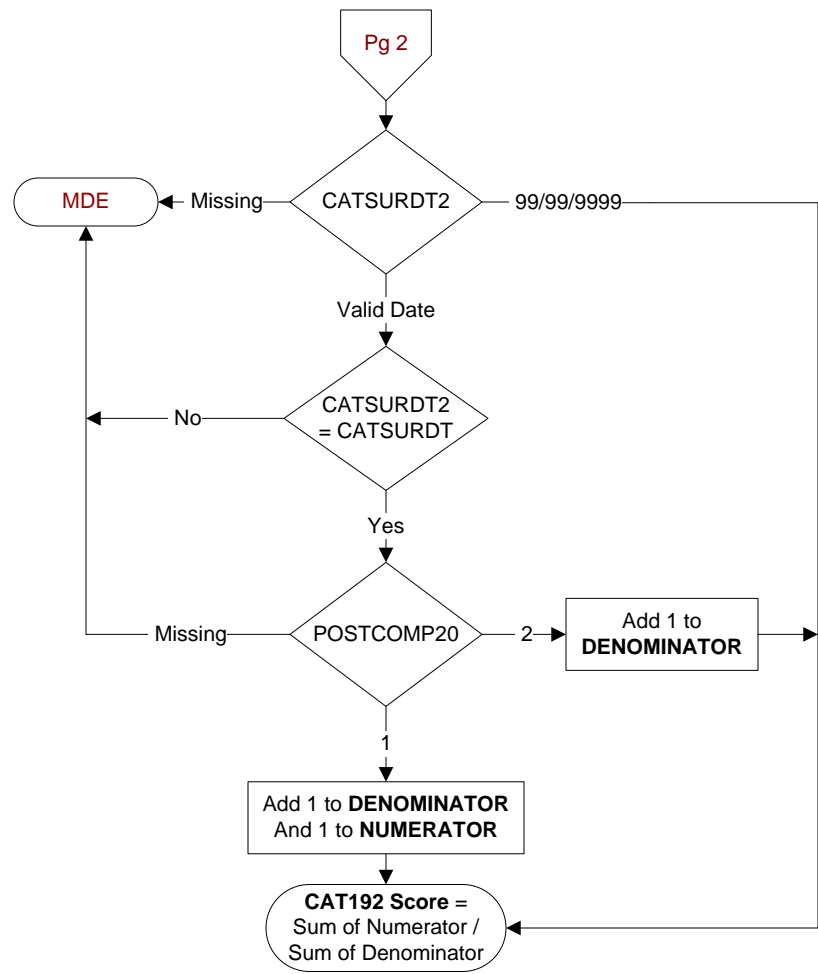
**POSTCOMP**  
During the timeframe from (computer display catsurdt to catsurdt + 30 days), did the ophthalmologist document any complications requiring an additional surgical procedure performed within 30 days of the cataract surgery?

- Retained lens fragments (residual parts of the natural lens such as the nucleus or cortex left in the eye)
- Endophthalmitis (serious infection in the eye)
- Dislocated lens implant
- Wrong power lens implant
- Retinal detachment
- Wound dehiscence

1. Yes  
2. No

MDE = Missing or Invalid Data Exclusion (data error)





<b>CATSURDT2</b> Enter the date of the second cataract surgery performed at this VAMC on (computer display catsurdt).	<b>POSTCOMP20</b> During the timeframe from (computer display catsurdt2 to catsurdt2 + 30 days), did the ophthalmologist document any complications requiring an additional surgical procedure performed within 30 days of the cataract surgery? <ul style="list-style-type: none"><li>• Retained lens fragments (residual parts of the natural lens such as the nucleus or cortex left in the eye)</li><li>• Endophthalmitis (serious infection in the eye)</li><li>• Dislocated lens implant</li><li>• Wrong power lens implant</li><li>• Retinal detachment</li><li>• Wound dehiscence</li></ul> 1. Yes 2. No
--	--