

Document Links:[CGPI Validation Module](#)[CGPI PI Module](#)[CGPI MH Module](#)**COHORT**

16. AMI - Outpatient visit
 48. Female, age 20-69
 50. Random Sample
 51. Random Sample MH
 54. Frail/Elderly
 60. DM Outpatient
 68. Contract CBOC

REVSTAT

REVIEW STATUS (not abstracted)
 0. Abstraction has not begun
 1. Abstraction in progress
 2. Abstraction completed w/o errors
 3. Cohort validation failure (exclusion)
 4. Record contains missing data
 5. Administrative exclusion

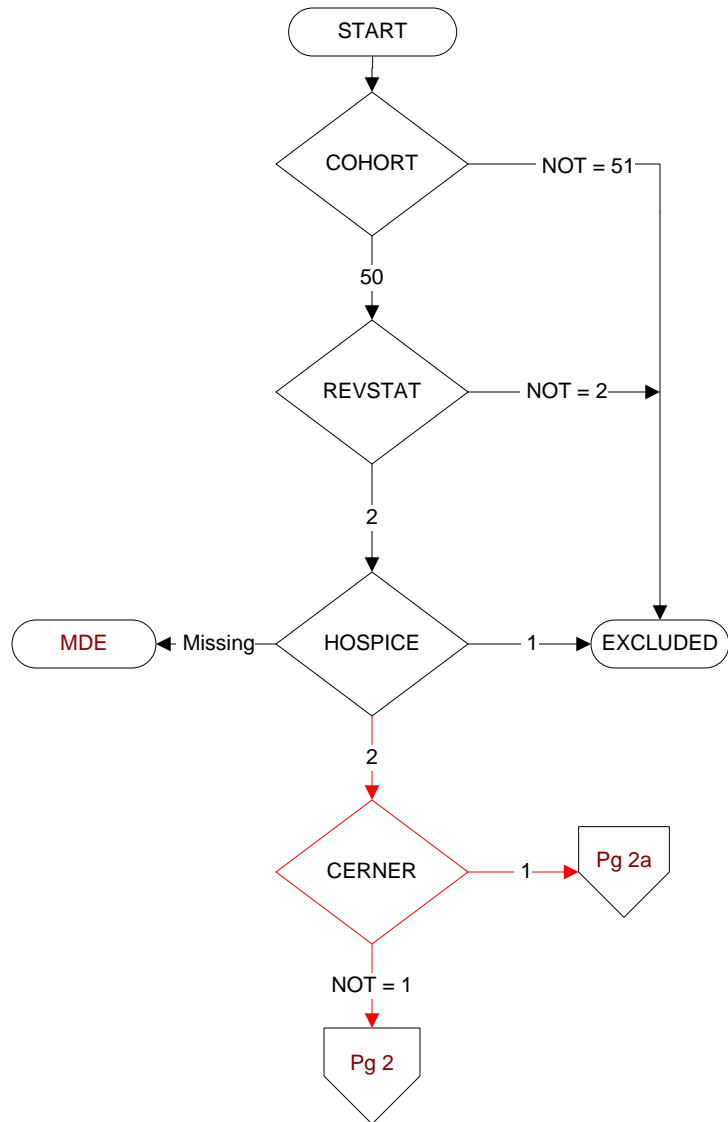
HOSPICE (Validation)

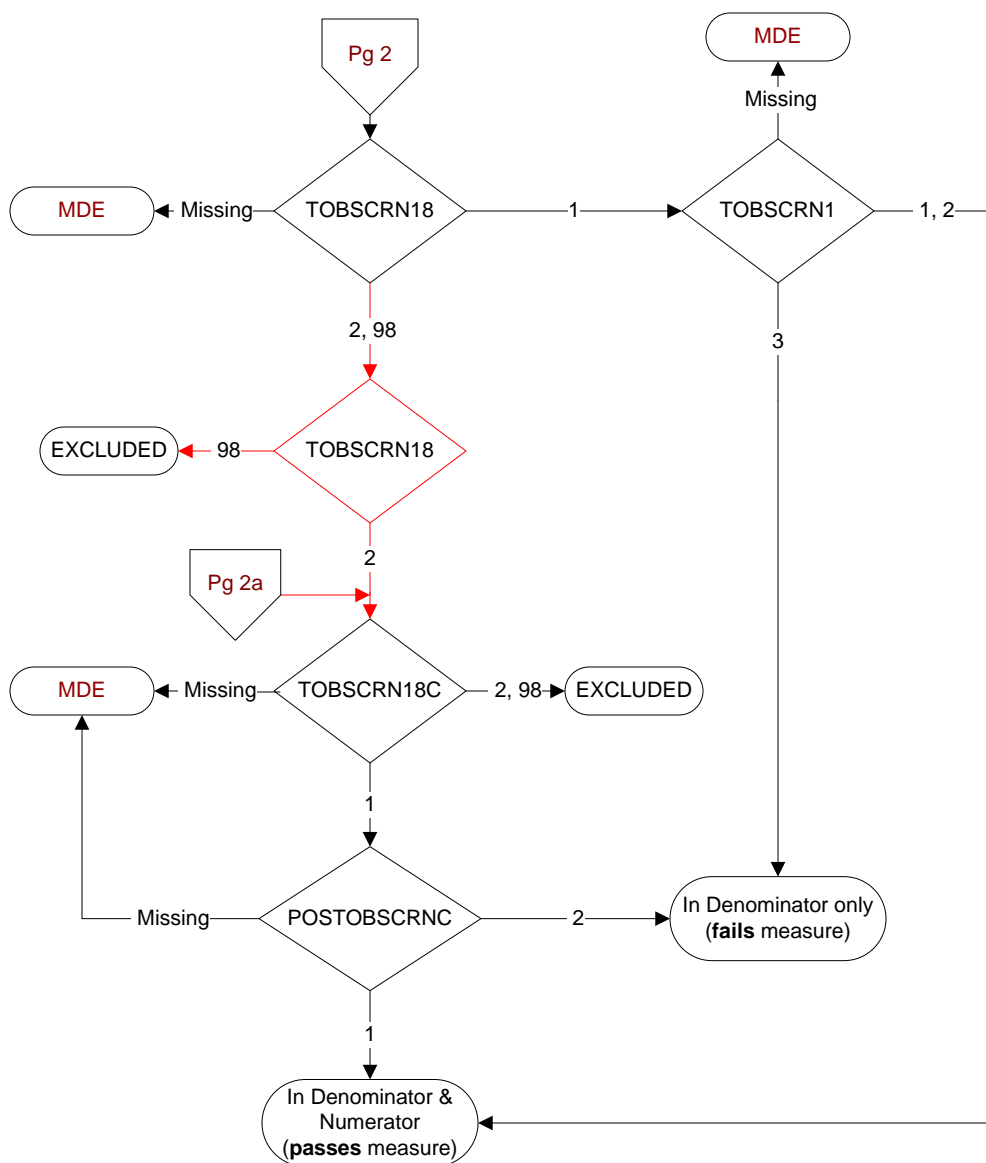
During the past year is there documentation in the medical record the patient is enrolled in a VHA or community-based hospice program?
 1. Yes
 2. No

CERNER (system flag)

Flag indicating facility is using the Cerner eHR
 1 = flagged
 0 = not flagged

**MDE = Missing or
 Invalid Data Exclusion
 (data error)**





TOBSCRN18 (PI)
During the past year was the patient screened for tobacco use by an acceptable provider using the **National Clinical Reminder for Tobacco Use**?
1. Yes
2. No
98. Patient declined to answer National Clinical Reminder for Tobacco Use screening questions

TOBSCRN1 (PI)
Enter the response to Tobacco Use Screening question #1 "Do you smoke cigarettes, or use tobacco every day, some days, or not at all?"
1. Every Day
2. Some Days
3. Not at all

TOBSCRN18C (PI module)
During the past year, was the patient screened for tobacco use by an acceptable provider?
1. Yes
2. No
98. Patient declined to answer screening questions

POSTOBSCRNC (PI module)
Was the tobacco screening done on (computer to display tobscrndtc) positive for tobacco use?
1. Yes
2. No