

**Document Links:**[CGPI Validation Module](#)[CGPI PI Module](#)[CGPI MH Module](#)**COHORT**

16. AMI - Outpatient visit  
 48. Female, age 20-69  
 50. Random Sample  
 51. Random Sample MH  
 54. Frail/Elderly  
 60. DM Outpatient  
 68. Contract CBOC

**FEFLAG** (rcvd on pull list)

FE case flagged for CGPI review / scoring?

0. No  
 1. Yes

**OTHCARE** (Validation)

Is there evidence in the medical record that within the past two years, the patient refused VHA Primary Care and is receiving ONLY his/her primary care in a non-VHA setting?

1. yes  
 2. no

**REVSTAT**

REVIEW STATUS (not abstracted)

0. Abstraction has not begun  
 1. Abstraction in progress  
 2. Abstraction completed w/o errors  
 3. TVG failure (exclusion)  
 4. Record contains missing required answers  
 5. Administrative exclusion from all measures

**HOSPICE** (Validation)

During the past year is there documentation in the medical record the patient is enrolled in a VHA or community-based hospice program?

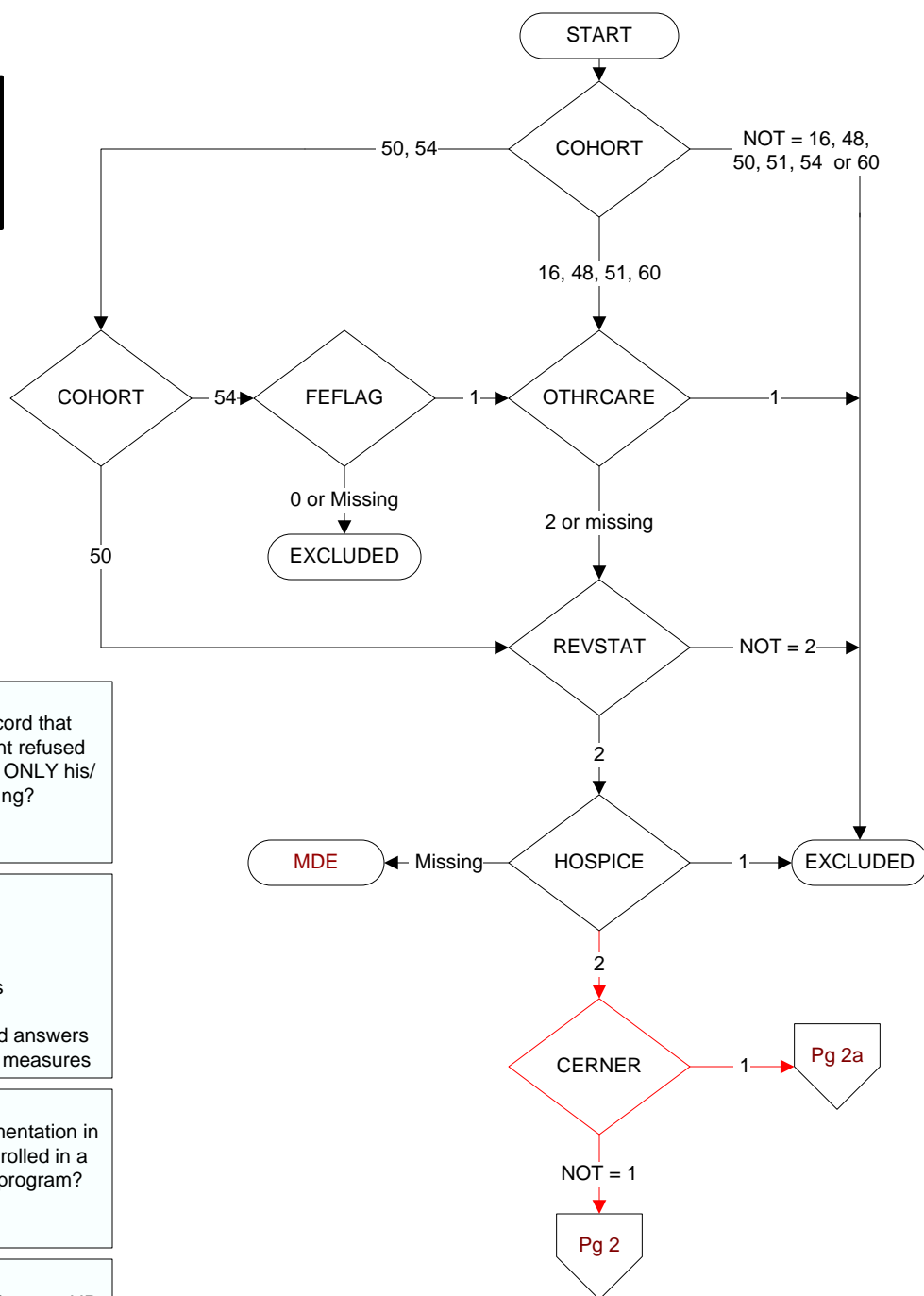
1. Yes  
 2. No

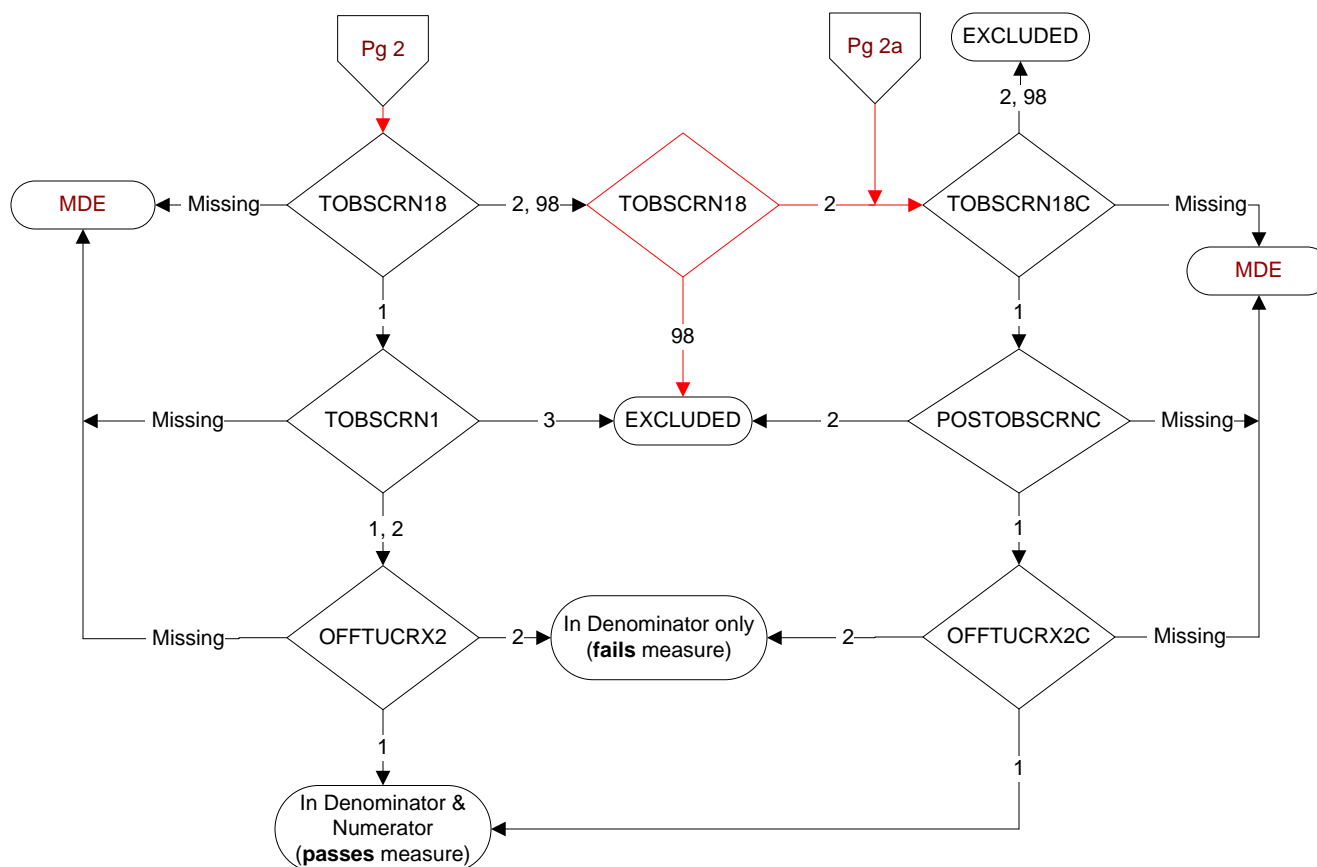
**CERNER** (system flag)

Flag indicating facility is using the Cerner eHR

1 = flagged  
 0 = not flagged

**MDE = Missing or  
 Invalid Data Exclusion  
 (data error)**



**TOBSCRN18 (PI)**

During the past year was the patient screened for tobacco use by an acceptable provider using the **National Clinical Reminder for Tobacco Use?**

1. Yes
2. No

98. Patient declined to answer National Clinical Reminder for Tobacco Use screening questions

**TOBSCRN1 (PI)**

Enter the response to Tobacco Use Screening question #1 "Do you smoke cigarettes, or use tobacco every day, some days, or not at all?"

1. Every Day
2. Some Days
3. Not at all

**OFFTUCRX2 (PI)**

During the past year, was the patient offered FDA approved medications by a provider to assist in tobacco use cessation using the National Clinical Reminder for Tobacco Use?

1. Yes
2. No

**TOBSCRN18C (PI module)**

During the past year, was the patient screened for tobacco use by an acceptable provider?

1. Yes
2. No

98. Patient declined to answer screening questions

**POSTOBSRNC (PI module)**

Was the tobacco screening done on (computer to display tobscrndtc) positive for tobacco use?

1. Yes
2. No

**OFFTUCRX2C (PI module)**

During the past year, was the patient offered FDA approved medications by a provider to assist in tobacco use cessation?

1. Yes
2. No