

Document Links:[Sepsis Instrument](#)**REVSTAT**

REVIEW STATUS (not abstracted)

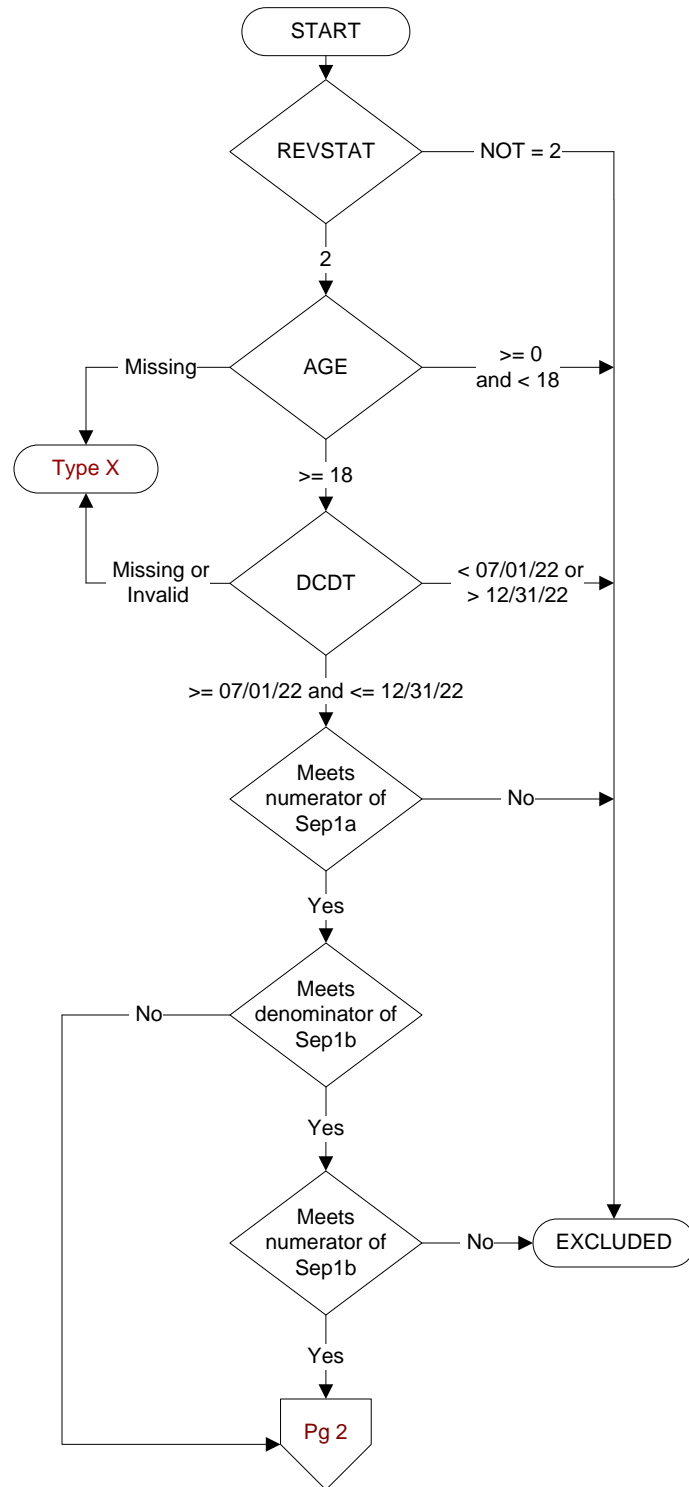
- 0. Abstraction has not begun
- 1. Abstraction in progress
- 2. Abstraction completed w/o errors
- 3. Cohort validation failure (exclusion)
- 4. Record contains missing data
- 5. Administrative exclusion from all measures

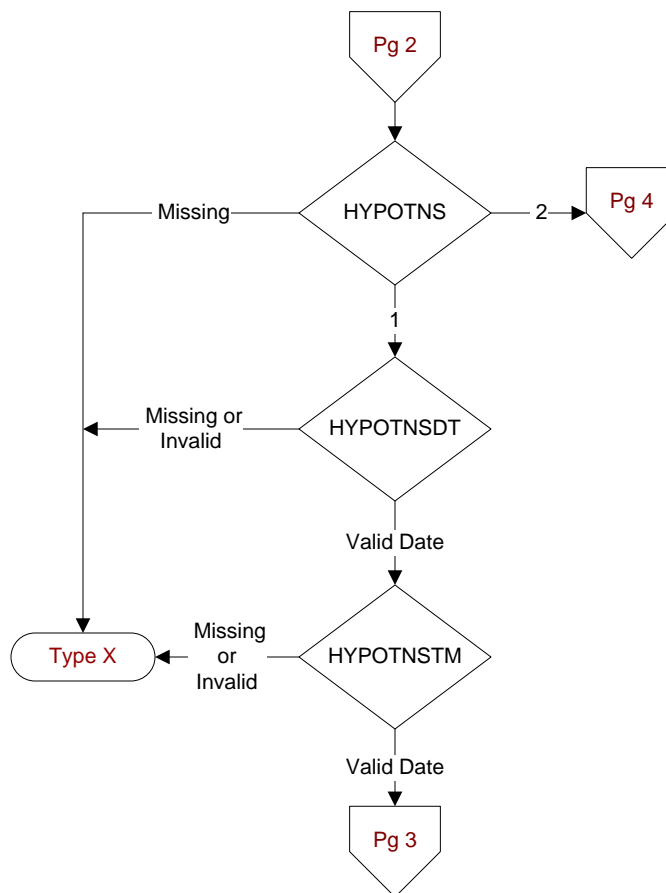
AGE

Calculated field – ADMDT - BIRTHDT

DCDT

Discharge date



**HYPOTNS**

During the time frame from (computer to display sepresdt/seprestm - 6 hours) to (computer to display sepresdt/seprestm + 6 hours) is there documentation initial hypotension was present?

Criteria for determining initial hypotension:

- Two hypotensive blood pressure readings at different times within specified timeframe
 - o systolic blood pressures <90, or
 - o mean arterial pressures (MAP), <65 or
 - o a decrease in systolic BP by >40 mm/Hg

1. Yes

2. No or unable to determine

HYPOTNSDT / HYPOTNSTM

Enter the date and time on which initial hypotension was present during the time frame from (computer to display sepresdt/seprestm - 6 hours to sepresdt/seprestm + 6 hours).

CRYSTL

During the timeframe from [(If hypotns = 1, and sepskh = 2, computer to display hypotnsdt/hypotnstm - 6 hours) to (hypotnsdt/hypotnstm + 3 hours) OR (If hypotns = 2 and sepskh = 1 computer to display sepskhdt/sepskhkm - 6 hours) to (sepskhdt/sepskhkm + 3 hours) OR (if hypotns = 1 and sepskh = 1, computer to display earliest of hypotnsdt/hypotnstm - 6 hrs) to (hypotnsdt/hypotnstm + 3 hours or sepskhdt/sepskhkm - 6 hours to sepskhdt/sepskhkm + 3 hours)] were crystalloid fluids initiated?

1. Yes
2. No
4. There is documentation the patient has an implanted Ventricular Assist Device (VAD)
98. The patient or authorized patient advocate refused IV fluids.

TARGVOL

Is there documentation the target ordered volume of crystalloid fluids (computer to display crystlvol) initiated on (computer to display crystldt at crystltm) was completely infused?

1. Yes
2. No

CRYSTLDT / CRYSTLTM

Enter the earliest date and time on which crystalloid fluids were initiated.

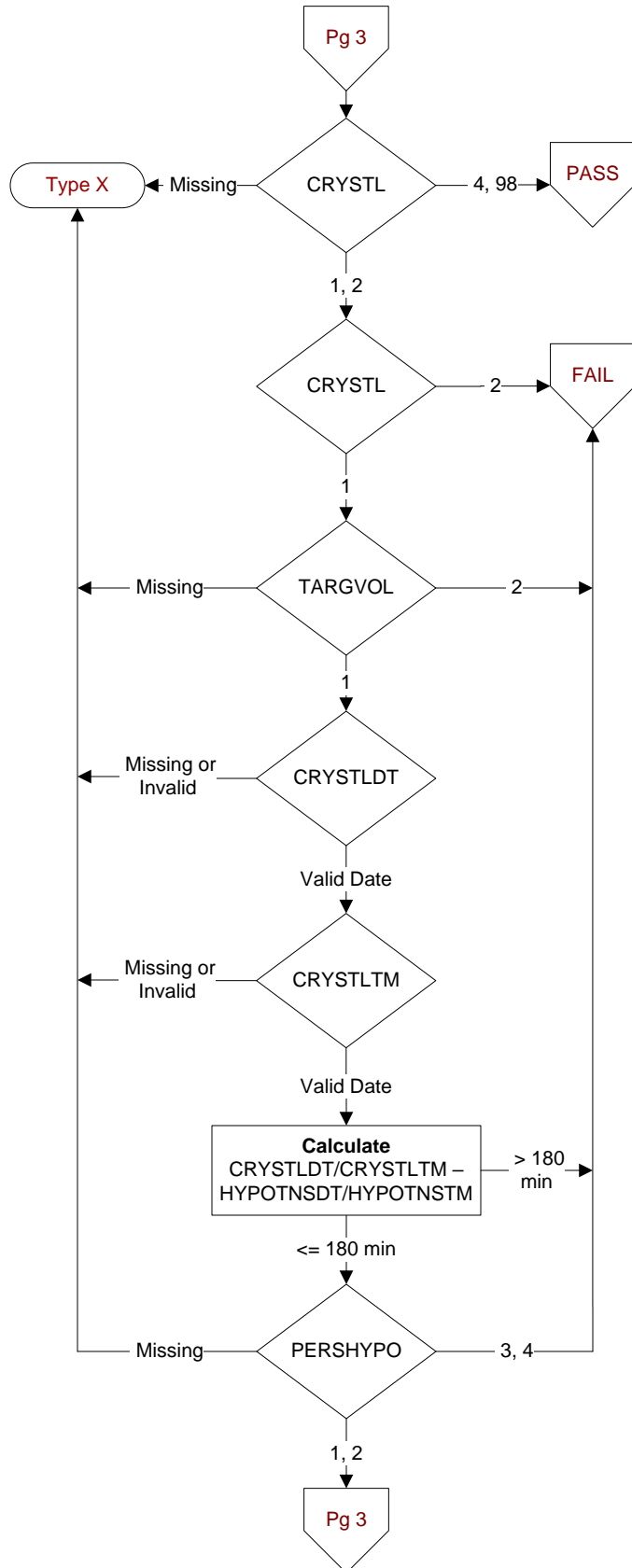
PERSHYPO

During the time frame from (computer display crystlend) to (computer to display crystlend + 1 hour) is there physician/APN/PA documentation that persistent hypotension or new onset of hypotension was present?

Criteria for determining persistent or new onset of hypotension:

- Two hypotensive blood pressure readings at different times within specified timeframe
 - o systolic blood pressures <90, or
 - o mean arterial pressures (MAP), <65 or
 - o a decrease in systolic BP by >40 mm/Hg

1. Yes
2. No or Unable to determine
3. No, the patient was not assessed for persistent hypotension or new onset of hypotension within one hour after the conclusion of crystalloid fluid administration at the target ordered volume.
4. Not applicable - Crystalloid fluids were administered but at a volume less than the target ordered volume



SEPSHK

Did a physician/APN/PA document presence of septic shock or severe sepsis with shock?

1. Yes
2. No or unable to determine

SEPSHKDT / SEPSHKTM

Enter the earliest date and time a physician/APN/PA documented the presence of septic shock OR the earliest date on which the final criterion was met to establish the presence of septic shock.

DCDISPO

What was the patient's discharge disposition on the day of discharge?

1. Home
 - Assisted Living Facilities (ALFs) – includes assisted living care at nursing home/facility
 - Court/Law Enforcement – includes detention facilities, jails, and prison
 - Home – includes board and care, domiciliary, foster or residential care, group or personal care homes, retirement communities, and homeless shelters
 - Home with Home Health Services
 - Outpatient Services including outpatient procedures at another hospital, outpatient Chemical Dependency Programs and Partial Hospitalization
2. Hospice – Home (or other home setting as listed in #1 (above))
3. Hospice – Health Care Facility
 - General Inpatient and Respite, Residential and Skilled Facilities, and Other Health Care Facilities
4. Acute Care Facility
 - Acute Short Term General and Critical Access Hospitals
 - Cancer and Children's Hospitals
 - Department of Defense and Veteran's Administration Hospitals
5. Other Health Care Facility
 - Extended or Immediate Care Facility (ECF/ICF)
 - Long Term Acute Care Hospital (LTACH)
 - Nursing Home or Facility including Veteran's Administration Nursing Facility
 - Psychiatric Hospital or Psychiatric Unit of a Hospital
 - Rehabilitation Facility including, but not limited to: Inpatient Rehabilitation Facility/Hospital, Rehabilitation Unit of a Hospital, Chemical Dependency/Alcohol Rehabilitation Facility
 - Skilled Nursing Facility (SNF), Sub-Acute Care or Swing Bed
 - Transitional Care Unit (TCU)
 - Veteran's Home
6. Expired
7. Left Against Medical Advice/AMA
99. Not documented or unable to determine

CNTRASEPSHK

During the timeframe from (computer to display sepshtkm - 6 hours) to (computer to display sepshtkm + 6 hours) is there physician/APN/PA or nursing documentation that the patient or authorized patient advocate refused either a blood draw, IV fluid administration, or vasopressor administration?

1. Yes
2. No or unable to determine

