

**Document Links:**[HBPC Instrument](#)**COHORT**

69 – Home Based Primary Care

**REVSTAT**

REVIEW STATUS (not abstracted)

- 0. Abstraction has not begun
- 1. Abstraction in progress
- 2. Abstraction completed w/o errors
- 3. Cohort validation failure (exclusion)
- 4. Record contains missing data
- 5. Administrative Exclusion

**HCSTATUS** (HBPC)

Counting from the most recent HBPC encounter within the study interval, enter the patient's status in regard to HBPC admission:

- 2. HBPC admission greater than or equal to 30 days but less than or equal to 1 year
- 3. HBPC admission greater than one year (>365 days from the admission date)

**INPTADM** (HBPC)

During the time frame from (computer display admisdt to admisdt + 30 days), did the record document the patient was hospitalized?

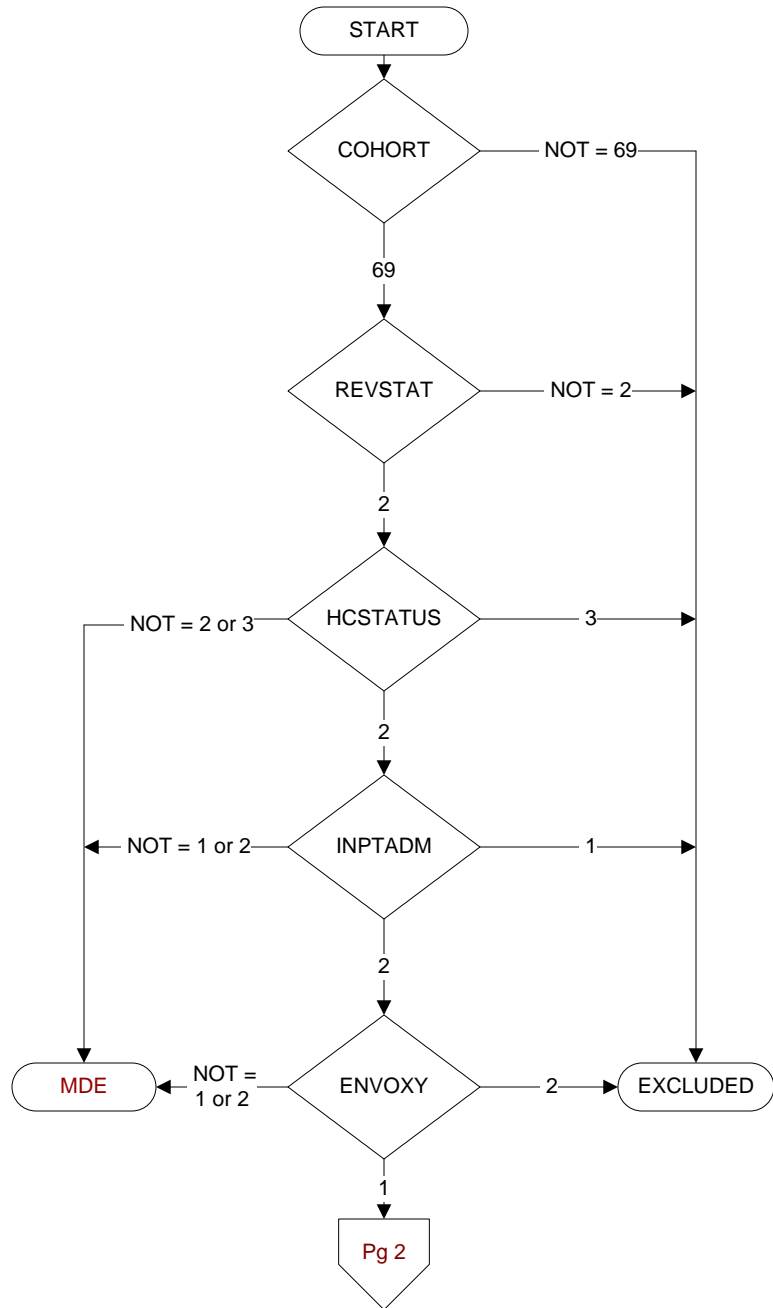
- 1. Yes
- 2. No

**ENVOXY** (HBPC)

Was the patient oxygen dependent?

- 1. Yes
- 2. No

**MDE = Missing or  
Invalid Data Exclusion  
(data error)**



**ASESOXY2 (HBPC)**

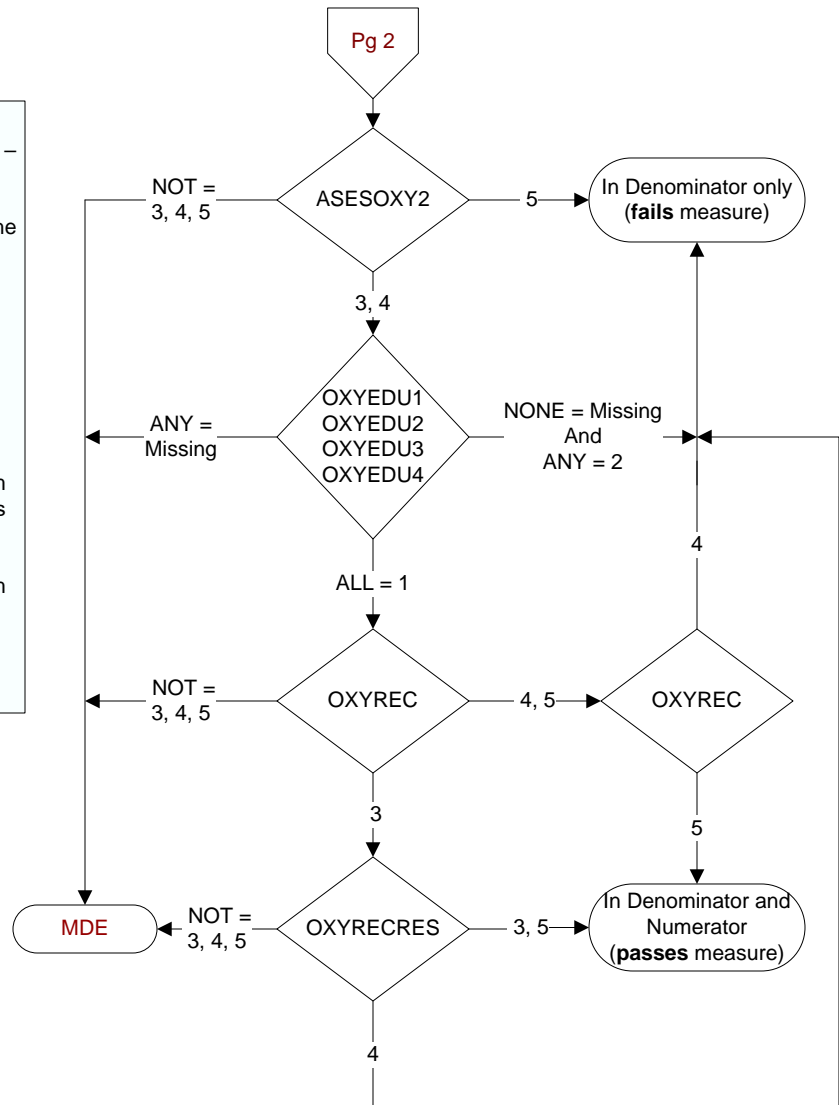
During the time frame from (computer to display admisdt – 30 days to admisdt + 30 days) at a face-to-face or CVT encounter, was a home oxygen safety risk assessment documented by a HBPC team member to include all of the following components?

- Whether there are smoking materials in the home,
- Whether or not the home has functioning smoke detectors, and
- Whether there are other fire safety risks in the home, such as the potential for open flames

3. Yes, a home oxygen safety risk assessment including all components above was documented by a HBPC team member during a **face-to-face encounter** in the patient's home

4. Yes, a home oxygen safety risk assessment including all components above was documented by a HBPC team member during a **CVT encounter**

5. No home oxygen safety risk assessment was documented by a HBPC team member during a face-to-face or CVT encounter

**OXYREC (HBPC)**

Did a HBPC team member document recommended interventions to address identified oxygen safety risk(s)?

Examples include, but are not limited to:

- Replace non-functioning smoke detector
- Family to post "no smoking" signs on the front exterior door
- Veteran educated to not use oxygen near open flames

3. Yes

4. No

5. HBPC team member documented that NO oxygen safety risks were identified

During the HBPC team face-to-face or CVT encounter on (computer to display asesoxydt), did the HBPC team member inform and educate the patient/caregiver on home oxygen safety to include:

**OXYEDU1.** The findings of the oxygen safety risk assessment

1. Yes

2. No

**OXYEDU2.** The causes of fire

1. Yes

2. No

**OXYEDU3.** Fire risks for neighboring residences and buildings

1. Yes

2. No

**OXYEDU4.** Precautions that can prevent fire-related injuries

1. Yes

2. No

**OXYRECRES (HBPC)**

Following documentation of the home oxygen safety/risk care plan or intervention, was response to the care plan/ intervention evaluated by a HBPC team member?

Examples include, but are not limited to:

- Smoke detector is now functioning
- "No smoking" signs are posted at front exterior door
- No further evidence of candle usage observed at follow-up visit

3. Yes

4. No

5. No HBPC visit between home oxygen care plan/intervention and study end date