

Document Links:[Hospital Outpatient Instrument](#)**REVSTAT**

REVIEW STATUS (not abstracted)

- 0. Abstraction has not begun
- 1. Abstraction in progress
- 2. Abstraction completed w/o errors
- 3. TVG failure (exclusion)
- 4. Record contains missing data
- 5. Administrative exclusion

COHORT (rcvd on pull list)

- 72 = HOP – AMI
- 73 = HOP – Chest Pain
- 74 = HOP – ED
- 76 = HOP – Stroke

EMCODE (HOP)

Enter the E/M code documented for this outpatient encounter.

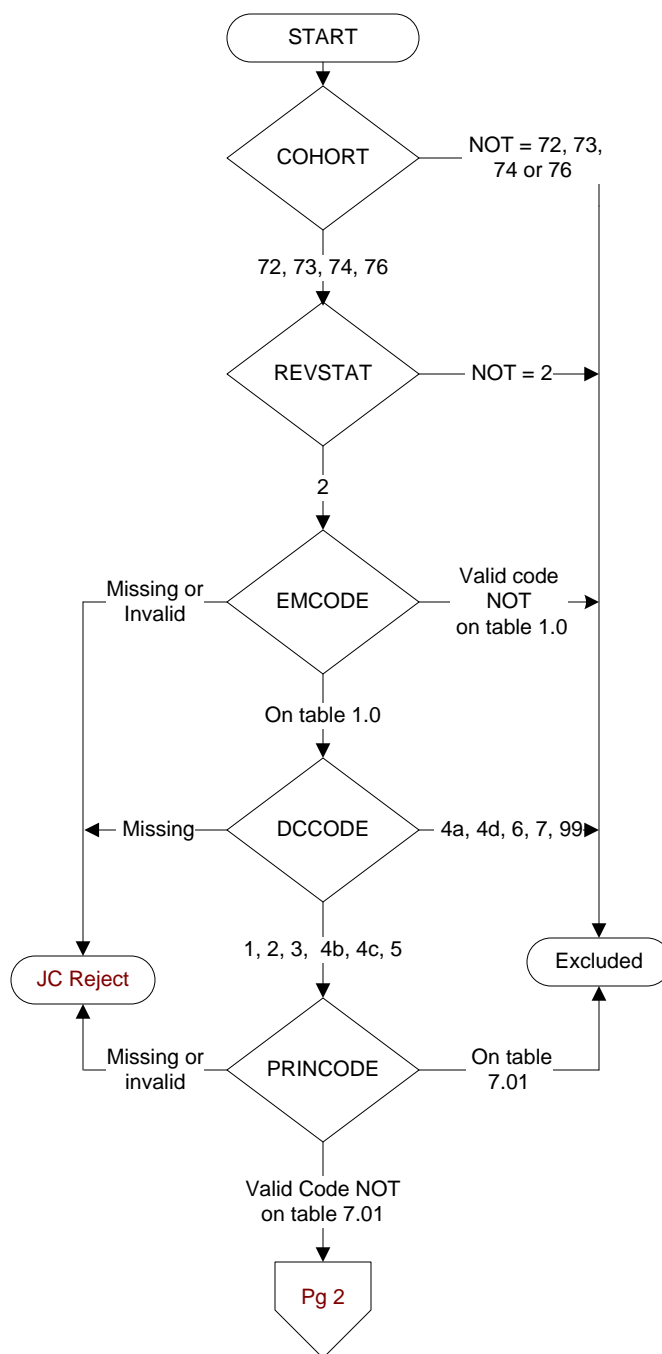
DCCODE (HOP)

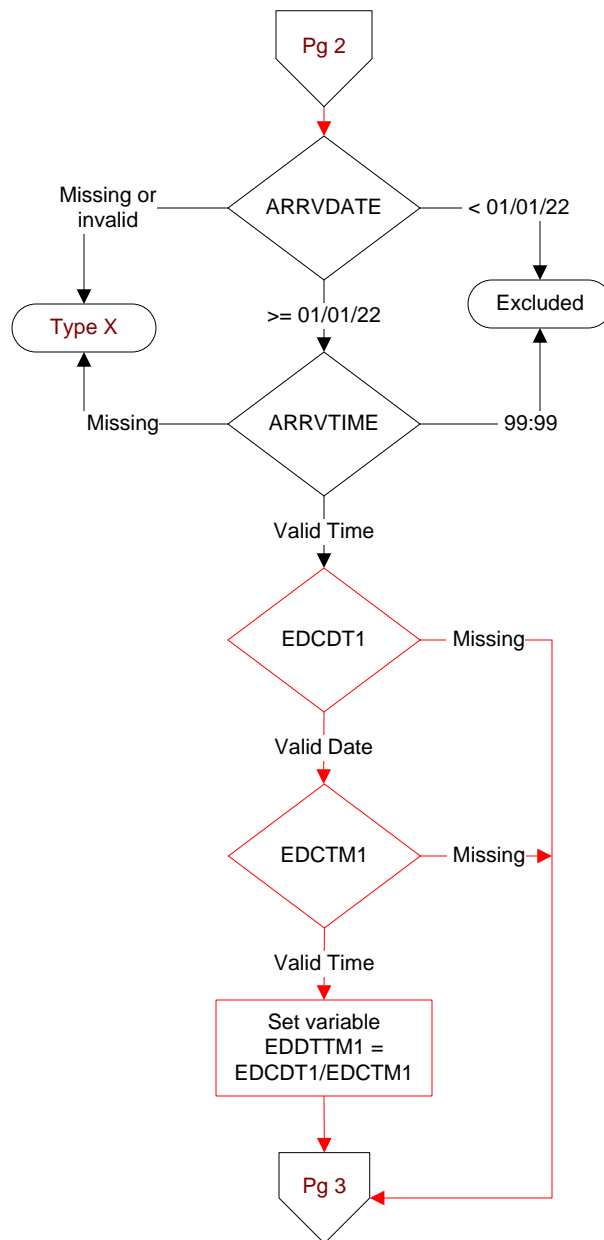
What was the patient's discharge disposition from the outpatient setting?

- 1. Home
 - Assisted Living Facilities (ALFs) – includes assisted living care at nursing home/facility
 - Court/Law Enforcement – includes detention facilities, jails, and prison
 - Home – includes board and care, domiciliary, foster or residential care, group or personal care homes, retirement communities, and homeless shelters
 - Home with Home Health Services
 - Outpatient Services including outpatient procedures at another hospital, outpatient Chemical Dependency Programs and Partial Hospitalization
- 2. Hospice – Home (or other home setting as listed in #1 above)
- 3. Hospice – Health Care Facility
 - General Inpatient and Respite, Residential and Skilled Facilities, and Other Health Care Facilities
- 4a. Non-VA Acute Care Facility – General Inpatient Care
- 4b. Acute Care Facility – Critical Access Hospital
- 4c. Acute Care Facility - Cancer or Children's Hospitals
- 4d. Acute Care Facility - Department of Defense or Veteran's Administration Hospitals
- 5. Other Health Care Facility
 - Extended or Immediate Care Facility (ECF/ICF)
 - Long Term Acute Care Hospital (LTACH)
 - Nursing Home or Facility including Veteran's Administration Nursing Facility
 - Psychiatric Hospital or Psychiatric Unit of a Hospital
 - Rehabilitation Facility including Inpatient Rehabilitation Facility/Hospital or Rehabilitation Unit of a Hospital
 - Skilled Nursing Facility (SNF), Sub-Acute Care or Swing Bed
 - Transitional Care Unit (TCU)
 - Veteran's Home
- 6. Expired
- 7. Left Against Medical Advice/AMA
- 99. Not documented or unable to determine

PRINCODE (HOP)

Enter the ICD-10-CM principal diagnosis code.



**ARRVDAT** (HOP)

Enter the **earliest** documented date the patient arrived in the hospital outpatient setting at this VAMC.

ARRVTIME (HOP)

Enter the **earliest** documented time the patient arrived at the outpatient or emergency department at this VAMC.

EDCDT1 (HOP)

Computer will pre-fill the date the patient departed from the emergency department.

EDCTM1 (HOP)

Computer will pre-fill the time the patient departed from the emergency department.

