

Document Links:[HBPC Instrument](#)**COHORT**

69 – Home Based Primary Care

REVSTAT

REVIEW STATUS (not abstracted)

- 0. Abstraction has not begun
- 1. Abstraction in progress
- 2. Abstraction completed w/o errors
- 3. TVG failure (exclusion)
- 4. Record contains missing data
- 5. Administrative exclusion from all measures

HOSPICE

During the past year is there documentation in the medical record the patient is enrolled in a VHA or community-based hospice program?

- 1. Yes
- 2. No

DEMENTDX2

During the past year, does the record document a diagnosis of dementia/neurocognitive disorder as evidenced by one of the following ICD-10-CM diagnosis codes:

A81.00, A81.01, A81.09, A81.2, A81.82, A81.89, A81.9, F01.50, F01.51, F02.80, F02.81, F03.90, F03.91, F10.27, F10.97, F13.27, F13.97, F18.17, F18.27, F18.97, F19.17, F19.27, F19.97, G23.1, G30.0, G30.1, G30.8, G30.9, G31.01, G31.09, G31.83, G90.3

- 1. Yes
- 2. No

PERMCI

During the past year, did a physician/APN/PA or psychologist document that the patient has probable permanent cognitive impairment using a Clinical Reminder?

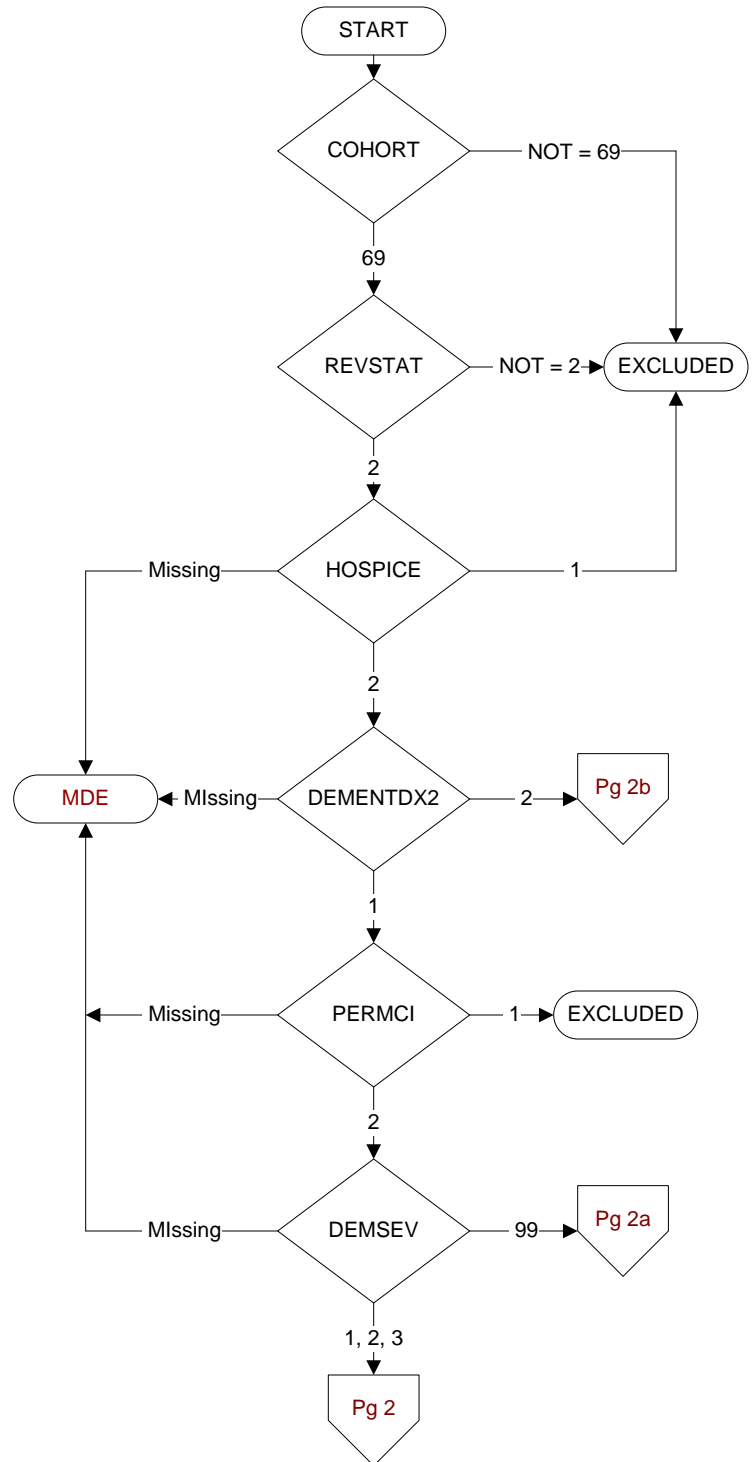
- 1. Yes
- 2. No

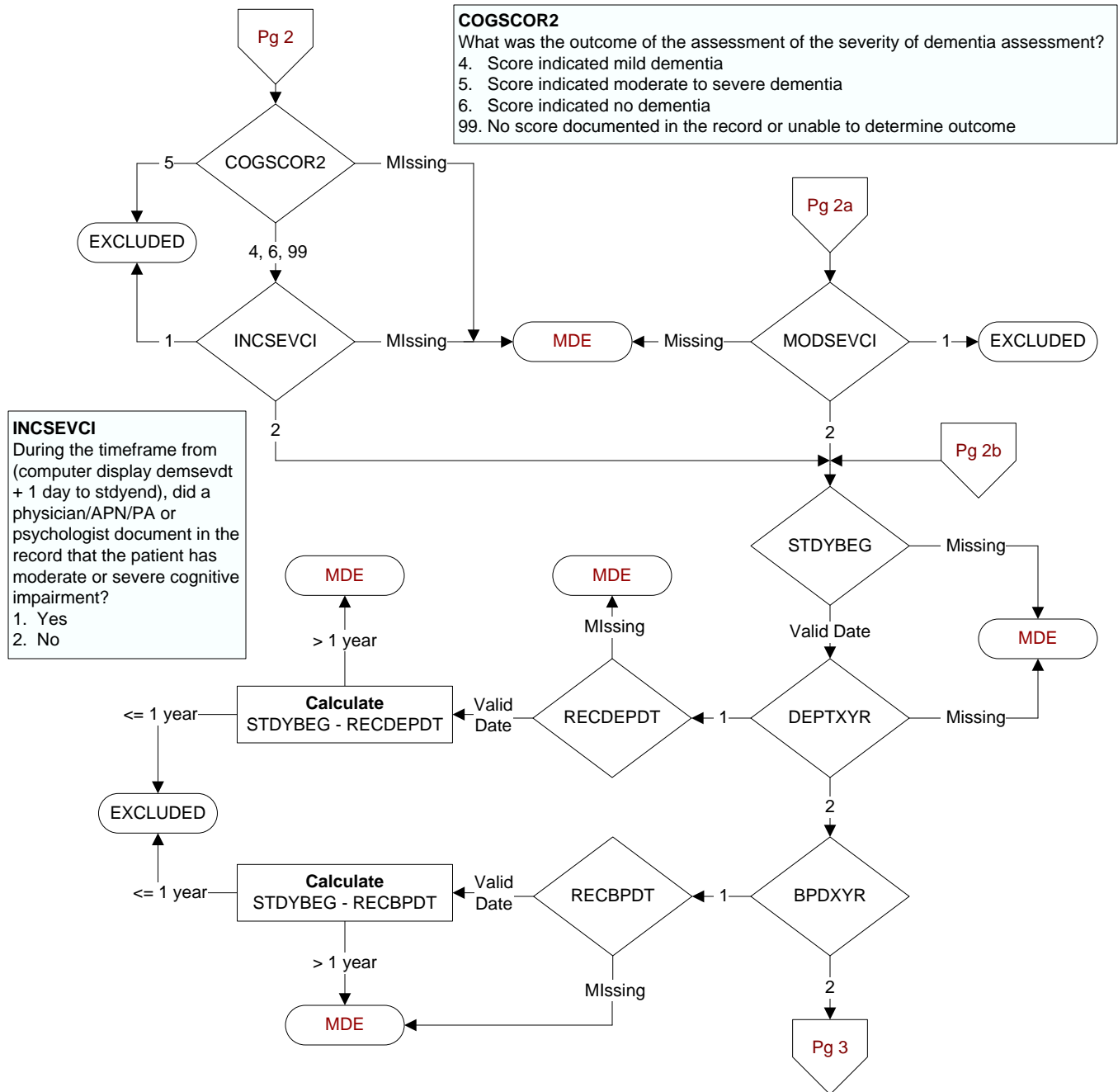
DEMSEV

Was the severity of dementia assessed during the past year using one of the following standardized tools?

- 1. Clinical Dementia Rating Scale (CDR)
- 2. Functional Assessment Staging Tool (FAST)
- 3. Global Deterioration Scale (GDS)
- 99. Severity of dementia was not assessed during the past year using one of the specified tools

**MDE = Missing or
Invalid Data Exclusion
(data error)**





SCRPHQ2
During the past year was the patient screened for depression by the PHQ-2?
1. Yes
2. No
98. Patient refused depression screening by the PHQ-2

PHQ2DT
Enter the date of the most recent screening for depression by the PHQ-2.

PHQ1SCOR
Enter the score for PHQ-2 Question 1 documented in the record:
Over the past 2 weeks, have you been bothered by little interest or pleasure in doing things?
0. Not at all → 0
1. Several days → 1
2. More than half the days → 2
3. Nearly every day → 3
99. No answer documented

PHQ2SCOR
Enter the score for PHQ-2 Question 2 documented in the record:
Over the past 2 weeks, have you been bothered by feeling down, depressed, or hopeless?
0. Not at all → 0
1. Several days → 1
2. More than half the days → 2
3. Nearly every day → 3
99. No answer documented

PHQTOTAL
Enter the total score for the PHQ-2 questions documented in the medical record.

