

**Document Links:**[Sepsis Instrument](#)**REVSTAT**

REVIEW STATUS (not abstracted)

- 0. Abstraction has not begun
- 1. Abstraction in progress
- 2. Abstraction completed w/o errors
- 3. TVG failure (exclusion)
- 4. Record contains missing data or errors
- 5. Administrative exclusion from all measures

**AGE**

Calculated field – ADMDT - BIRTHDT

**DCDT**

Discharge date

**ADMDT**

Admission date

**TRNSFR**

Is there documentation the patient was received as a transfer from an inpatient, outpatient or emergency/ observation department of an outside hospital or from an ambulatory surgery center?

- 1. Yes
- 2. No

**CLNTRIAL**

During this hospital stay, was the patient enrolled in a clinical trial in which patients with sepsis/septic shock were being studied?

- 1. Yes
- 2. No

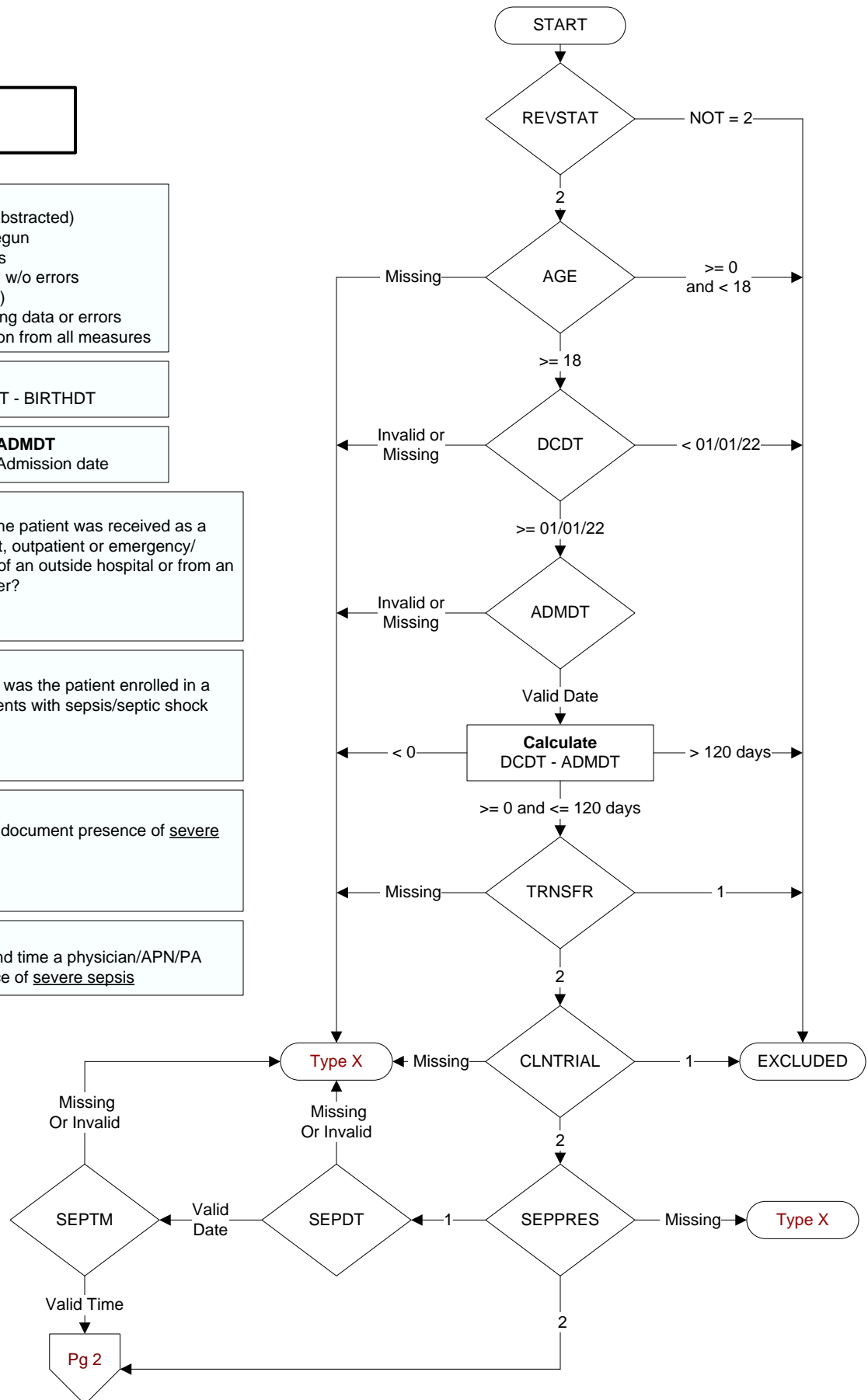
**SEPPRES**

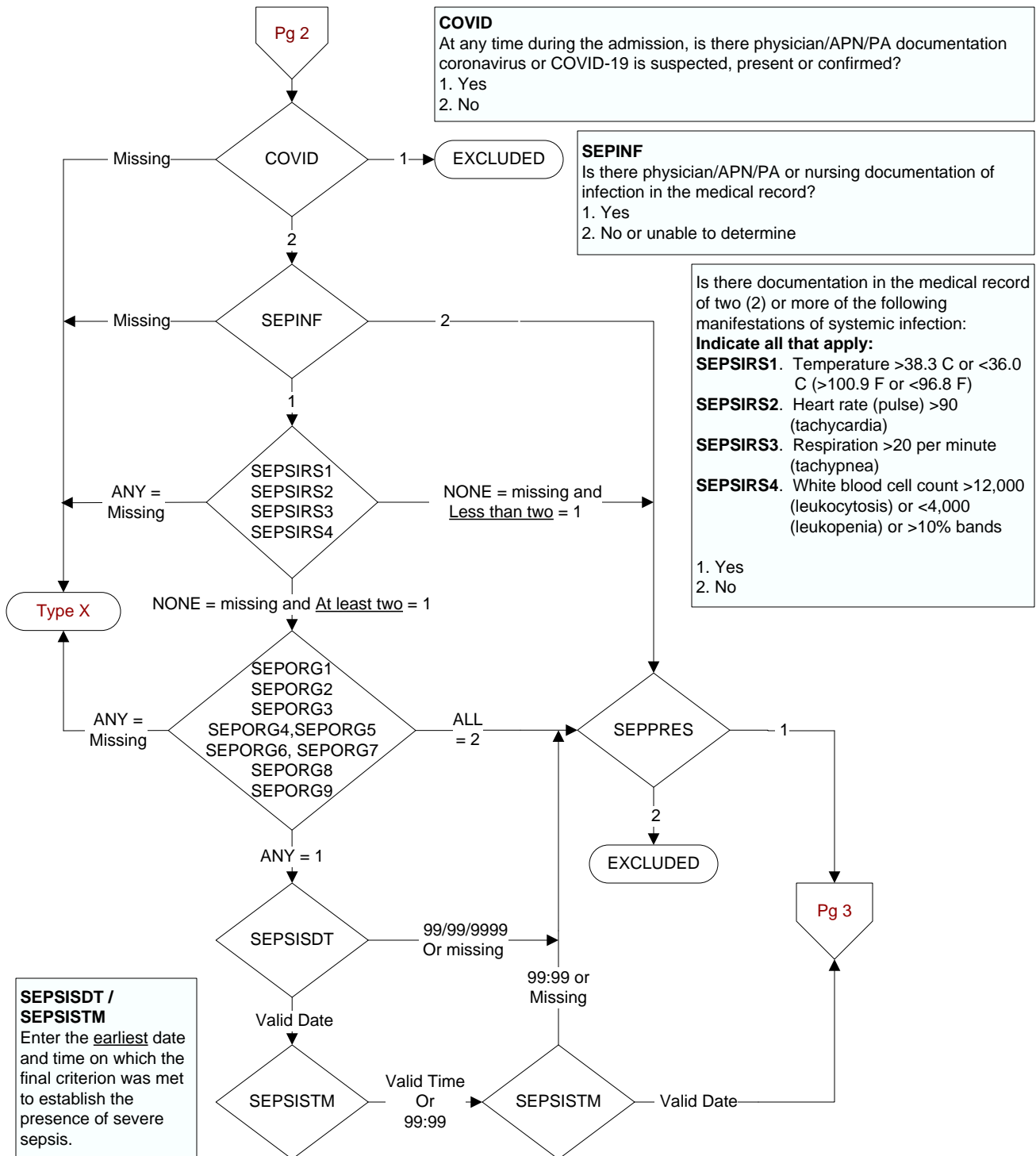
Did a physician/APN/PA document presence of severe sepsis?

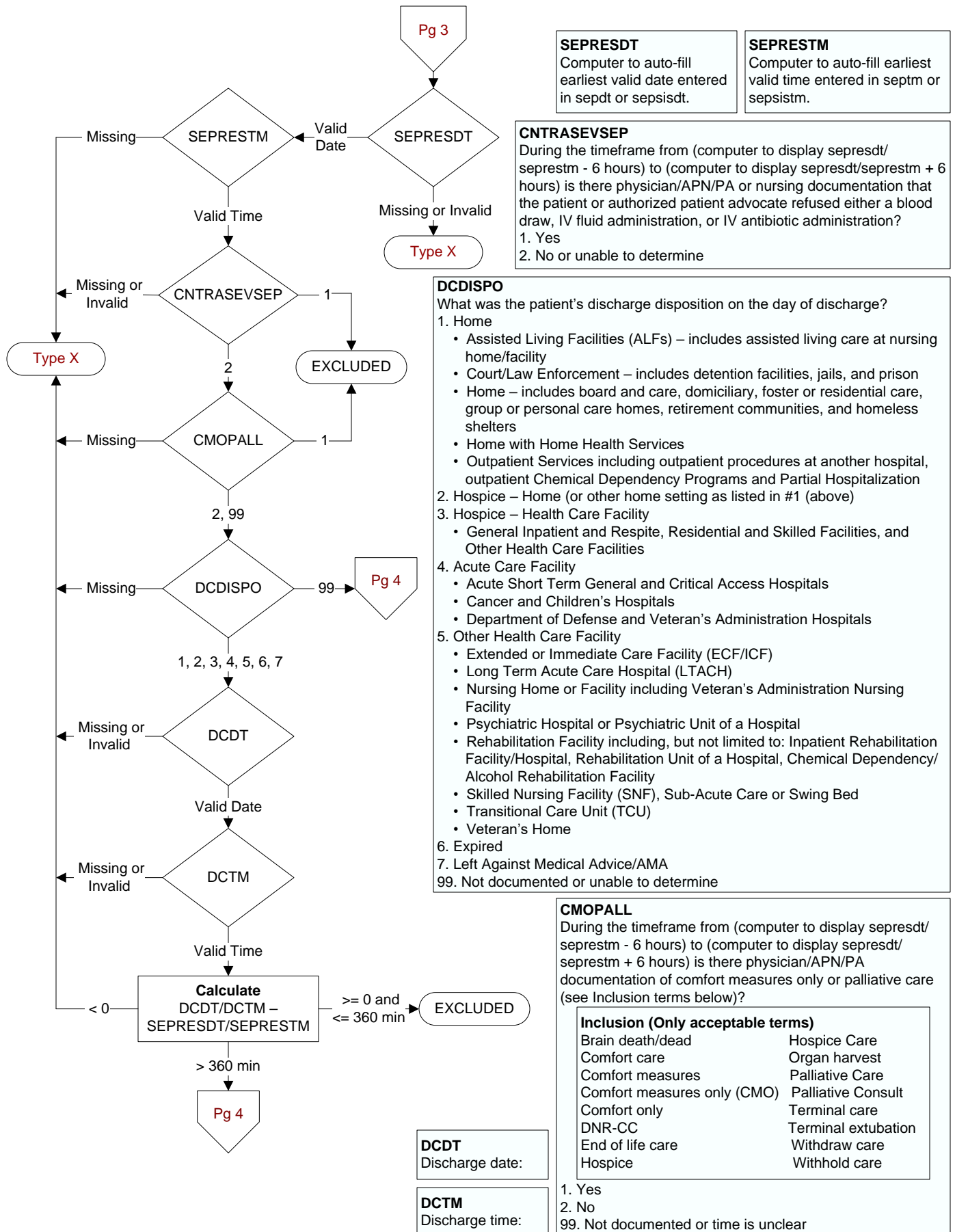
- 1. Yes
- 2. No

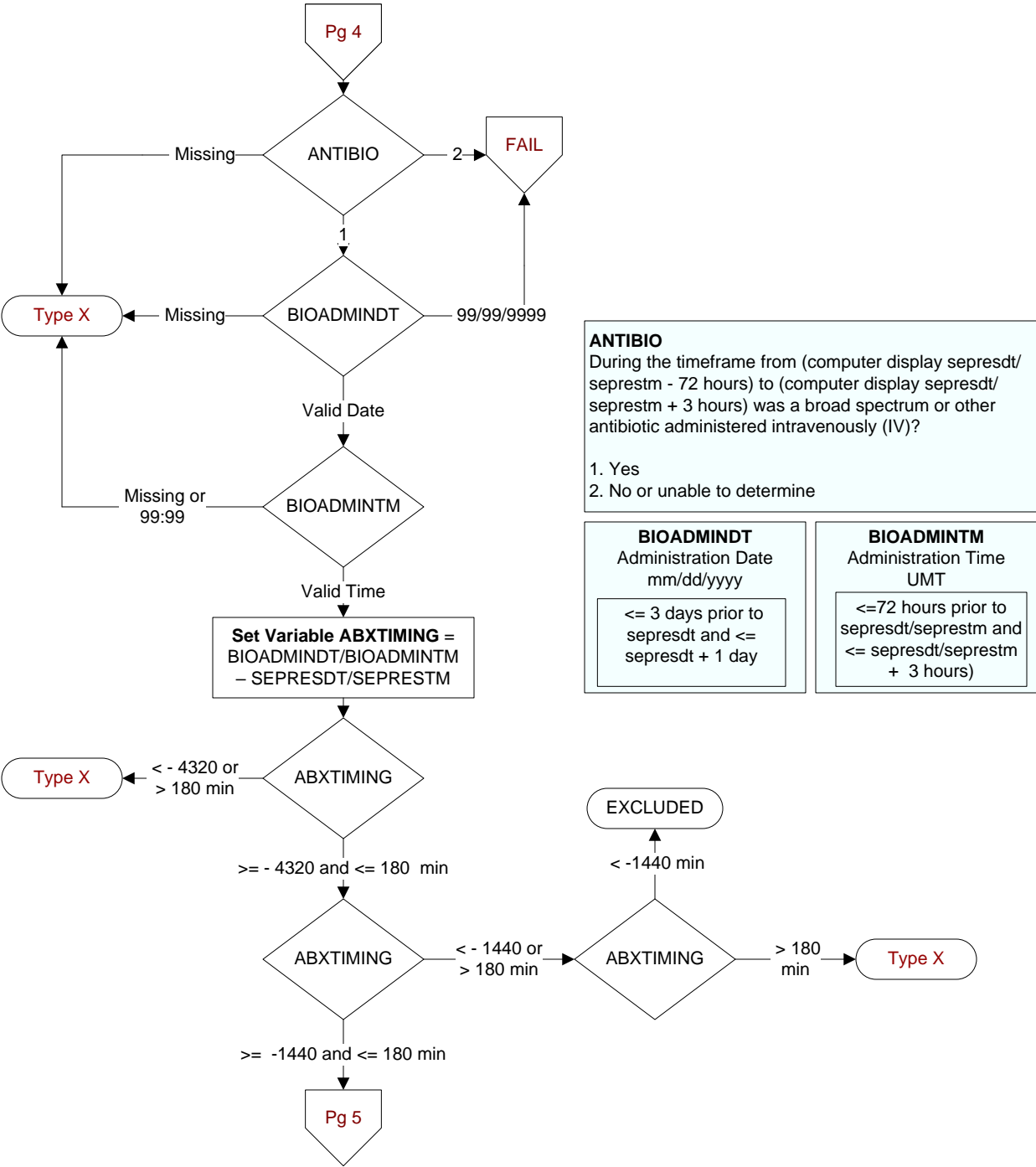
**SEPDT / SEPTM**

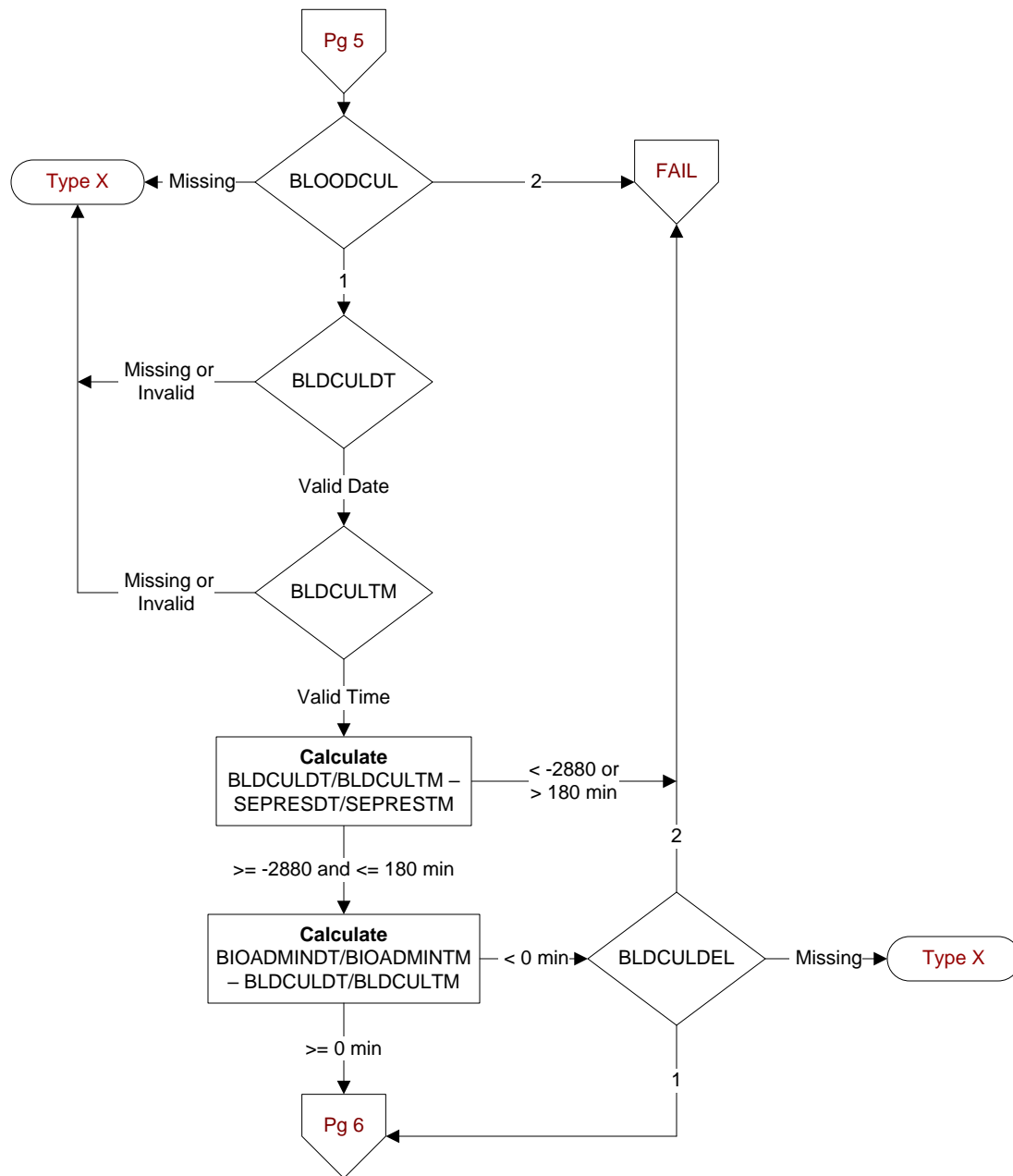
Enter the earliest date and time a physician/APN/PA documented the presence of severe sepsis









**BLOODCUL**

During the time frame from [(If bioadmintm/ bioadmintm - sepresdt/seprestm >= -1440 and < 0, computer to display sepresdt/ seprestm - 48 hours to sepresdt/seprestm + 3 hours); else computer to display (earliest bioadmintm/ bioadmintm- 24 hours to sepresdt/ seprestm + 3 hours)], was a blood culture collected?

1. Yes
2. No or unable to determine

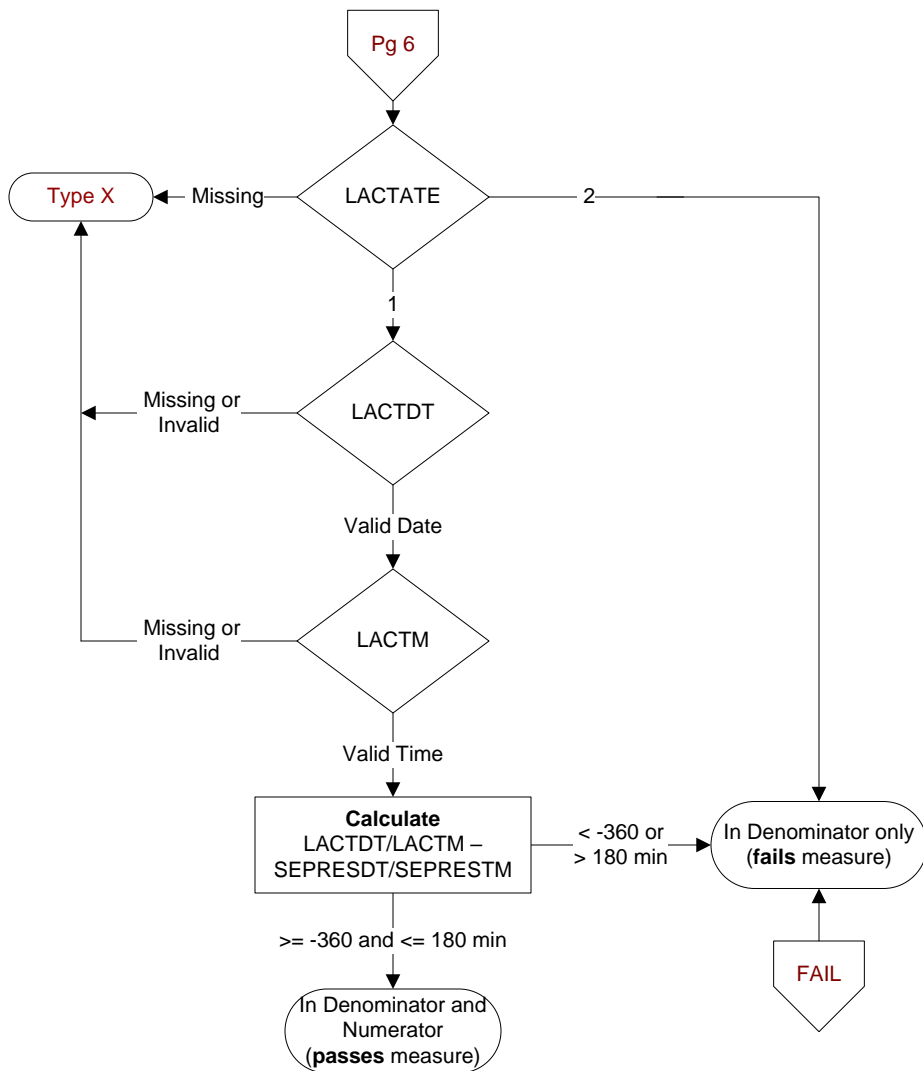
**BLDCULDT / BLDCULTM**

During the specified timeframe, enter the date and time the blood culture was collected.

**BLDCULDEL**

Is there documentation supporting an acceptable delay in collecting a blood culture?

1. Yes
2. No or unable to determine

**LACTATE**

During the timeframe from (computer display  
sepresdt/seprestm - 6 hours to sepresdt/seprestm +  
3 hours) was an initial lactate level drawn (or  
collected)?

1. Yes
2. No

**LACTDT / LACTM**

Enter the date and time the initial  
lactate level was drawn (or collected).