

**Document Links:**[HBPC Instrument](#)**REVSTAT**

REVIEW STATUS (not abstracted)

0. Abstraction has not begun
1. Abstraction in progress
2. Abstraction completed w/o errors
3. Cohort validation failure (exclusion)
4. Record contains missing data
5. Administrative Exclusion

**COHORT**

69 – Home Based Primary Care

**HCSTATUS** (HBPC)

Counting from the most recent HBPC encounter within the study interval, enter the patient's status in regard to HBPC admission:

2. HBPC admission greater than or equal to 30 days but less than or equal to 1 year
3. HBPC admission greater than one year (>365 days from the admission date)

**INPTADM** (HBPC)

During the time frame from (computer display admisdt to admisdt + 30 days), did the record document the patient was hospitalized?

1. Yes
2. No

**HOSPICE**

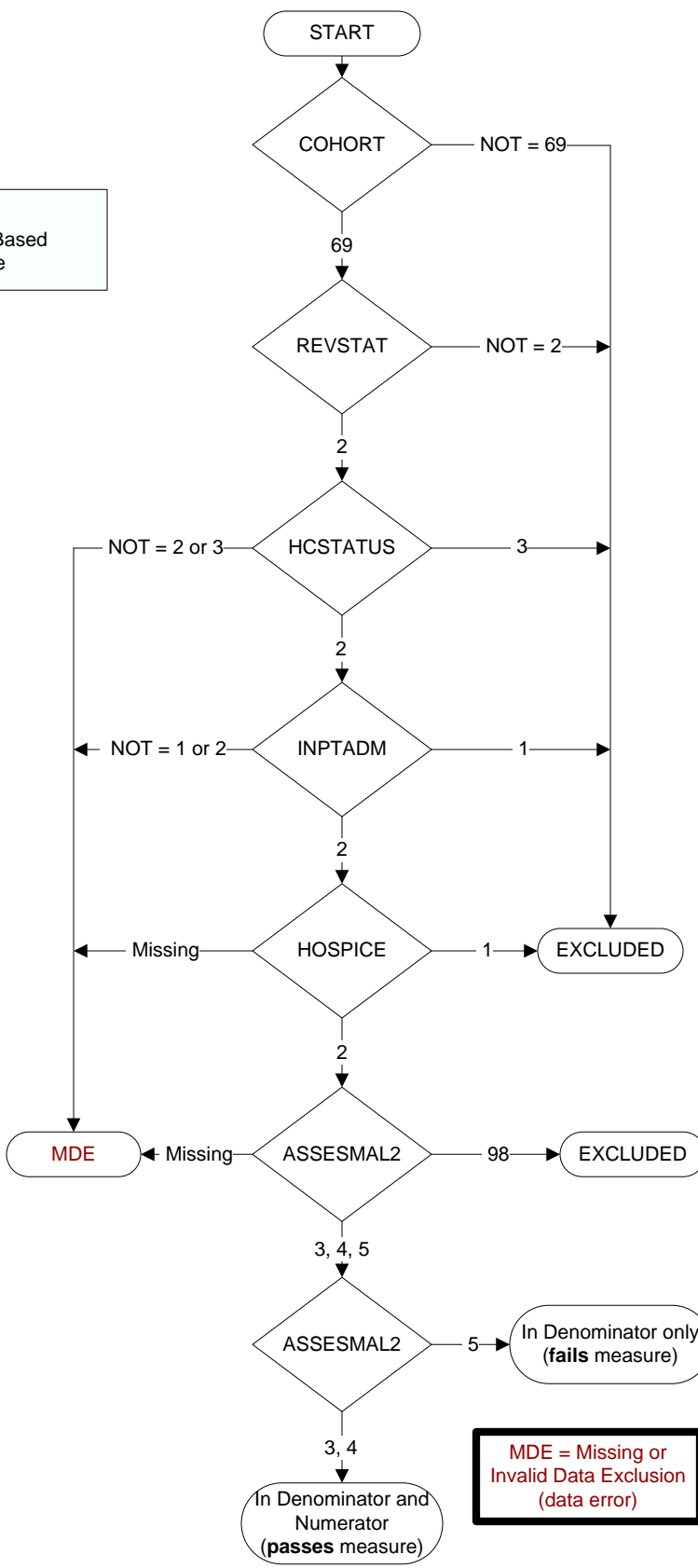
During the past year is there documentation in the medical record the patient is enrolled in a VHA or community-based hospice program?

1. Yes
2. No

**ASSESMA2** (HBPC)

During the time frame from (if nuthyd = 5, computer display (admisdt – 30 days to admisdt + 30 days); else display (On nuthydt), was an assessment for malnutrition completed by a HBPC Registered Dietitian (RD) or Registered Dietician Nutritionist (RDN) during the initial face-to-face encounter in the veteran's home or clinical video telehealth (CVT) encounter?

1. Yes, the HBPC RD or RDN initial nutrition assessment contains an assessment for malnutrition that was completed by a RD or RDN during the initial **face-to-face** encounter
2. Yes, the HBPC RD or RDN initial nutrition assessment contains an assessment for malnutrition that was completed by a RD or RDN during the initial **CVT** encounter
3. No, the HBPC RD or RDN initial nutrition assessment does not contain an assessment for malnutrition completed by a RD or RDN during a face-to-face or CVT encounter
98. No, an assessment for malnutrition was not completed by the HBPC RD or RDN and the initial nutrition assessment contains documentation that the patient/caregiver/guardian refused or declined to participate in the assessment for malnutrition



**MDE = Missing or  
Invalid Data Exclusion  
(data error)**