

**Document Links:**[HBPC Instrument](#)**COHORT**

69 – Home Based Primary Care

**REVSTAT**

REVIEW STATUS (not abstracted)

- 0. Abstraction has not begun
- 1. Abstraction in progress
- 2. Abstraction completed w/o errors
- 3. Cohort validation failure (exclusion)
- 4. Record contains missing data
- 5. Administrative Exclusion

**HCSTATUS** (HBPC)

Counting from the most recent HBPC encounter within the study interval, enter the patient's status in regard to HBPC admission:

- 2. HBPC admission greater than or equal to 30 days but less than or equal to 1 year
- 3. HBPC admission greater than one year (>365 days from the admission date)

**INPTADM** (HBPC)

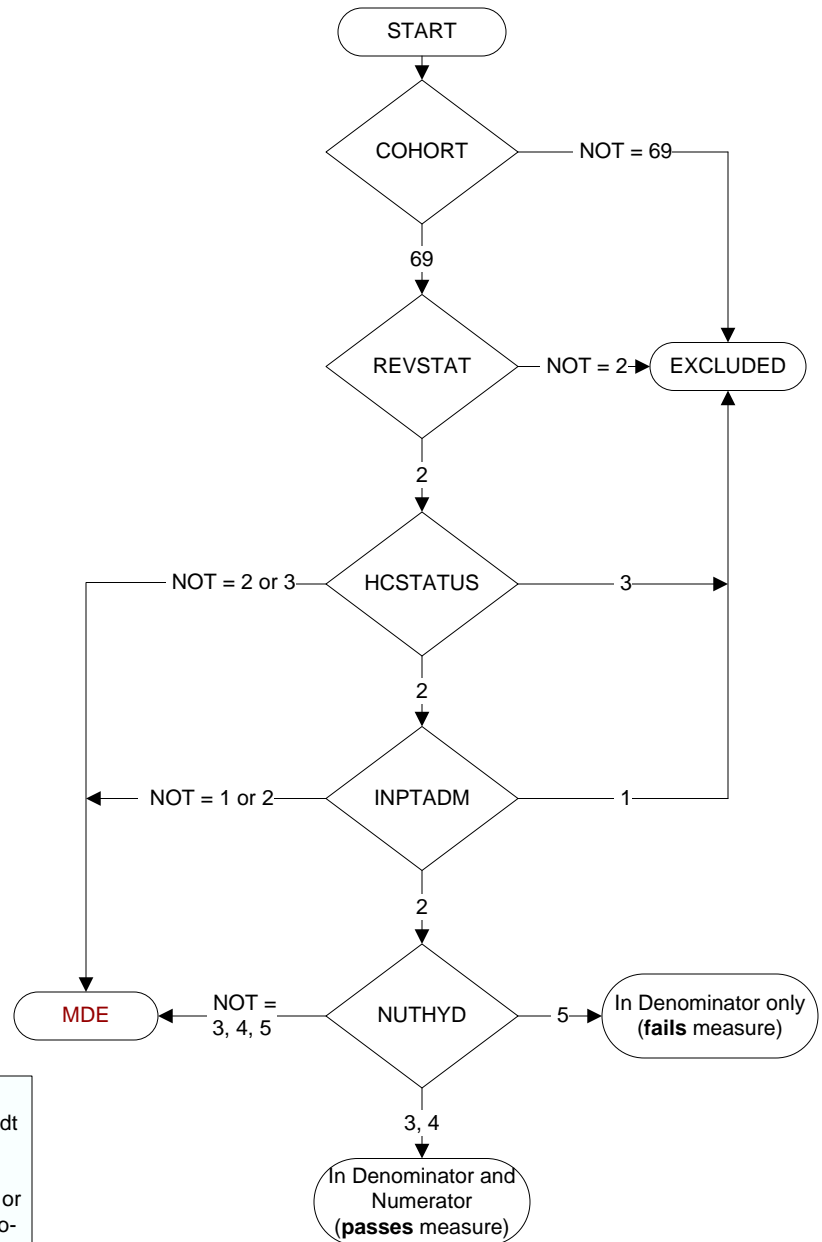
During the time frame from (computer display admisdt to admisdt + 30 days), did the record document the patient was hospitalized?

- 1. Yes
- 2. No

**NUTHYD** (HBPC)

During the time frame from (computer display admisdt – 30 days to admisdt + 30 days), does the record document assessment of the patient's nutritional and hydration needs by a HBPC Registered Dietician (RD) or Registered Dietician Nutritionist (RDN) during a face-to-face encounter in the veteran's home or clinical video telehealth (CVT) encounter?

- 3. Yes, assessment of patient's nutritional and hydration needs by a HBPC RD or RDN was documented during a **face-to-face encounter**.
- 4. Yes, assessment of patient's nutritional and hydration needs by a HBPC RD or RDN was documented during a **CVT encounter**.
- 5. No assessment of the patient's nutritional and hydration needs was documented by a HBPC RD or RDN during a face-to-face or clinical video telehealth (CVT) encounter



**MDE = Missing or  
Invalid Data Exclusion  
(data error)**