

Document Links:

[CGPI Validation Module](#)

[CGPI PI Module](#)

[CGPI MH Module](#)

COHORT

16. AMI - Outpatient visit
48. Female, age 20-69
50. Random Sample
51. Random Sample MH
54. Frail/Elderly
60. DM Outpatient
68. Contract CBOC

FEFLAG (rcvd on pull list)

FE case flagged for CGPI review / scoring?
0. No
1. Yes

OTHCARE (Validation)

Is there evidence in the medical record that within the past two years, the patient refused VHA Primary Care and is receiving ONLY his/her primary care in a non-VHA setting?
1. yes
2. no

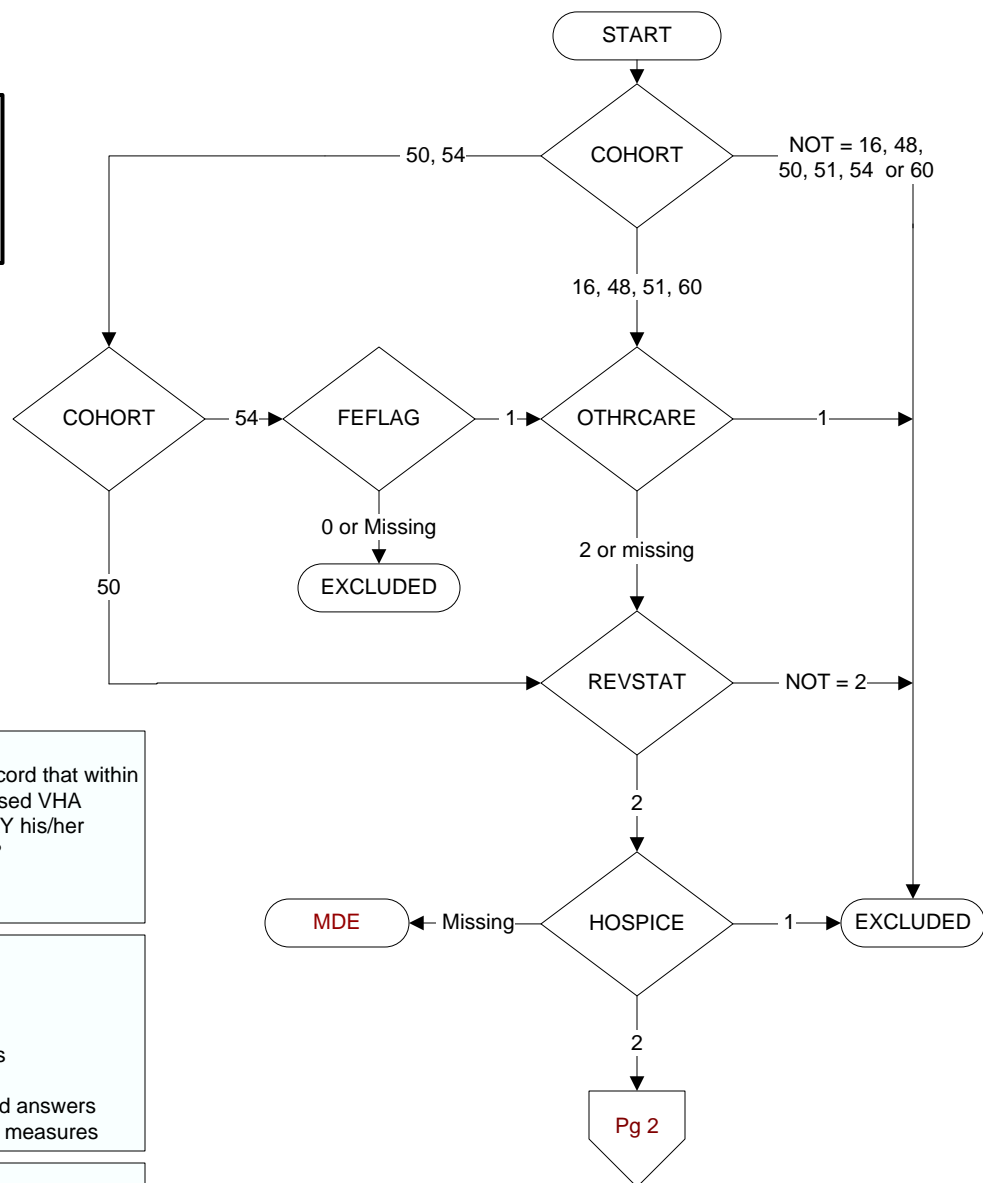
REVSTAT

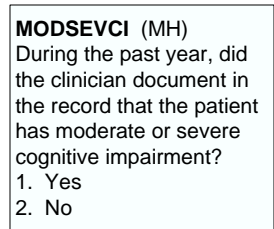
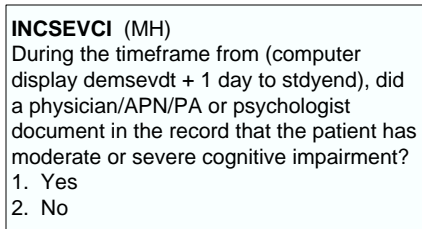
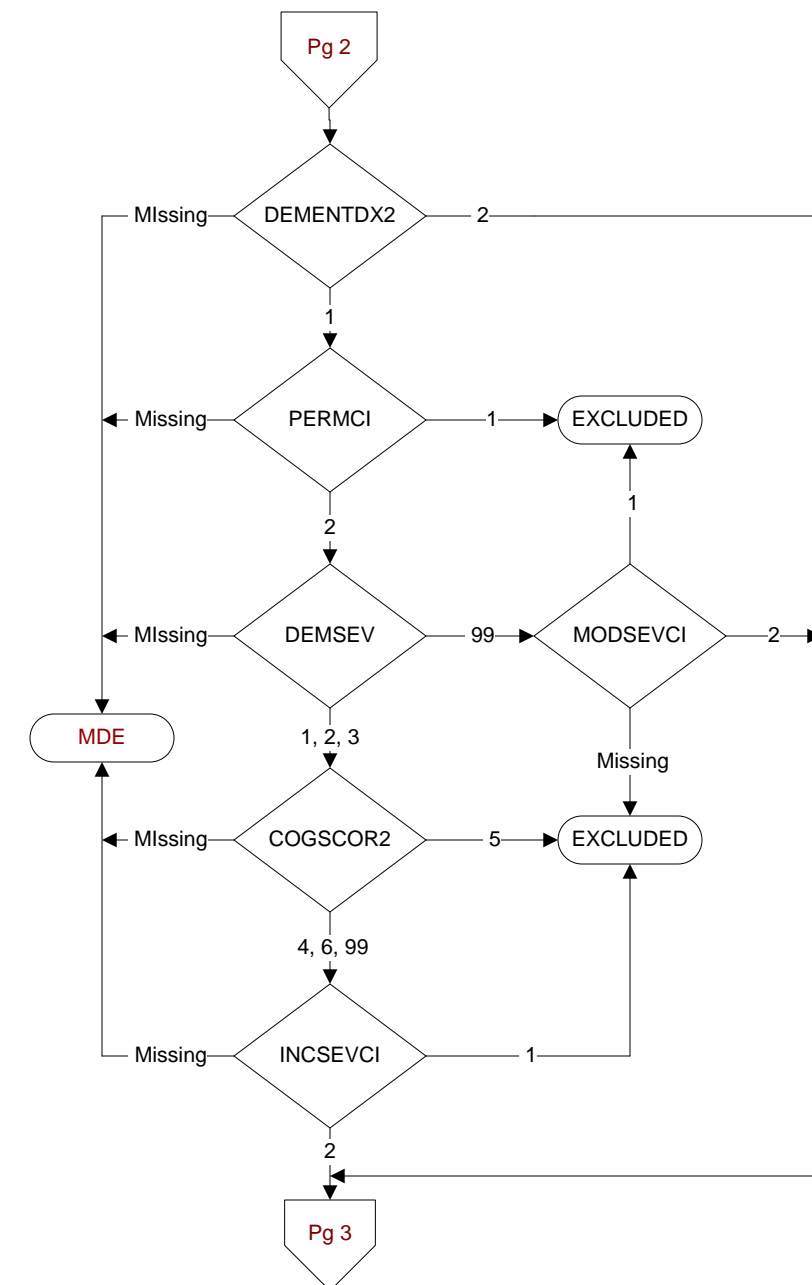
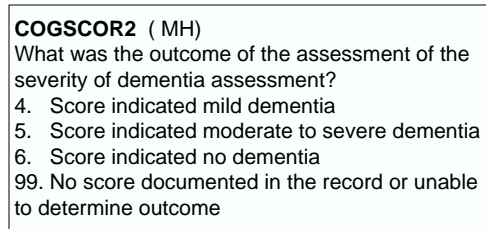
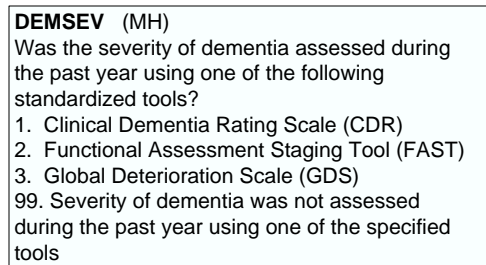
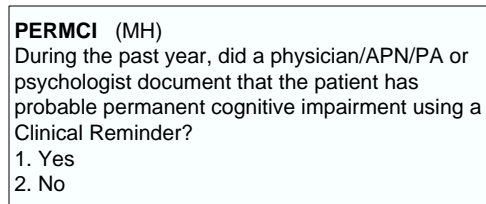
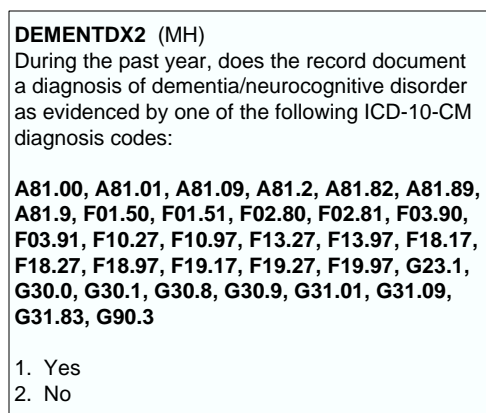
REVIEW STATUS (not abstracted)
0. Abstraction has not begun
1. Abstraction in progress
2. Abstraction completed w/o errors
3. TVG failure (exclusion)
4. Record contains missing required answers
5. Administrative exclusion from all measures

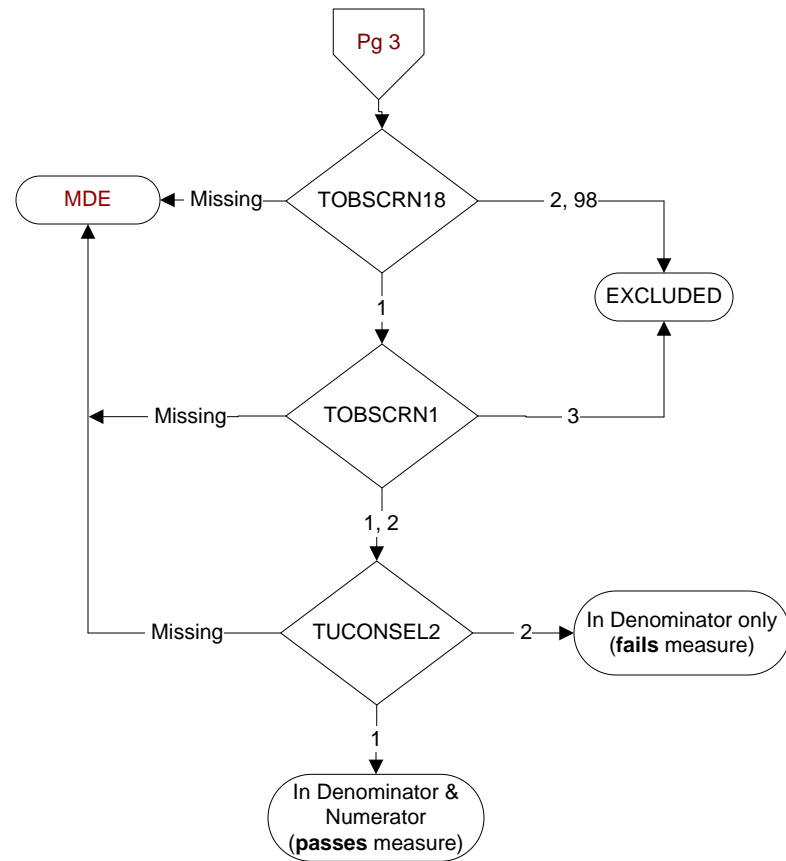
HOSPICE (Validation)

During the past year is there documentation in the medical record the patient is enrolled in a VHA or community-based hospice program?
1. Yes
2. No

**MDE = Missing or
Invalid Data Exclusion
(data error)**







TOBSCRN18 (PI)
 During the past year was the patient screened for tobacco use by an acceptable provider using the **National Clinical Reminder for Tobacco Use**?
 1. Yes
 2. No
 98. Patient declined to answer National Clinical Reminder for Tobacco Use screening questions

TOBSCRN1 (PI)
 Enter the response to Tobacco Use Screening question #1 "Do you smoke cigarettes, or use tobacco every day, some days, or not at all?"
 1. Every Day
 2. Some Days
 3. Not at all

TUCONSEL2 (PI)
 During the past year was the patient advised to quit smoking or stop using tobacco using the National Clinical Reminder for Tobacco Use?
 1. Yes
 2. No