

Document Links:[Sepsis Instrument](#)**REVSTAT**

REVIEW STATUS (not abstracted)

- 0. Abstraction has not begun
- 1. Abstraction in progress
- 2. Abstraction completed w/o errors
- 3. TVG failure (exclusion)
- 4. Record contains missing data or errors
- 5. Administrative exclusion from all measures

AGE

Calculated field – ADMDT - BIRTHDT

DCDT

Discharge date

ADMDT

Admission date

TRNSFR

Is there documentation the patient was received as a transfer from an inpatient, outpatient or emergency/ observation department of an outside hospital or from an ambulatory surgery center?

- 1. Yes
- 2. No

CLNTRIAL

During this hospital stay, was the patient enrolled in a clinical trial in which patients with sepsis/septic shock were being studied?

- 1. Yes
- 2. No

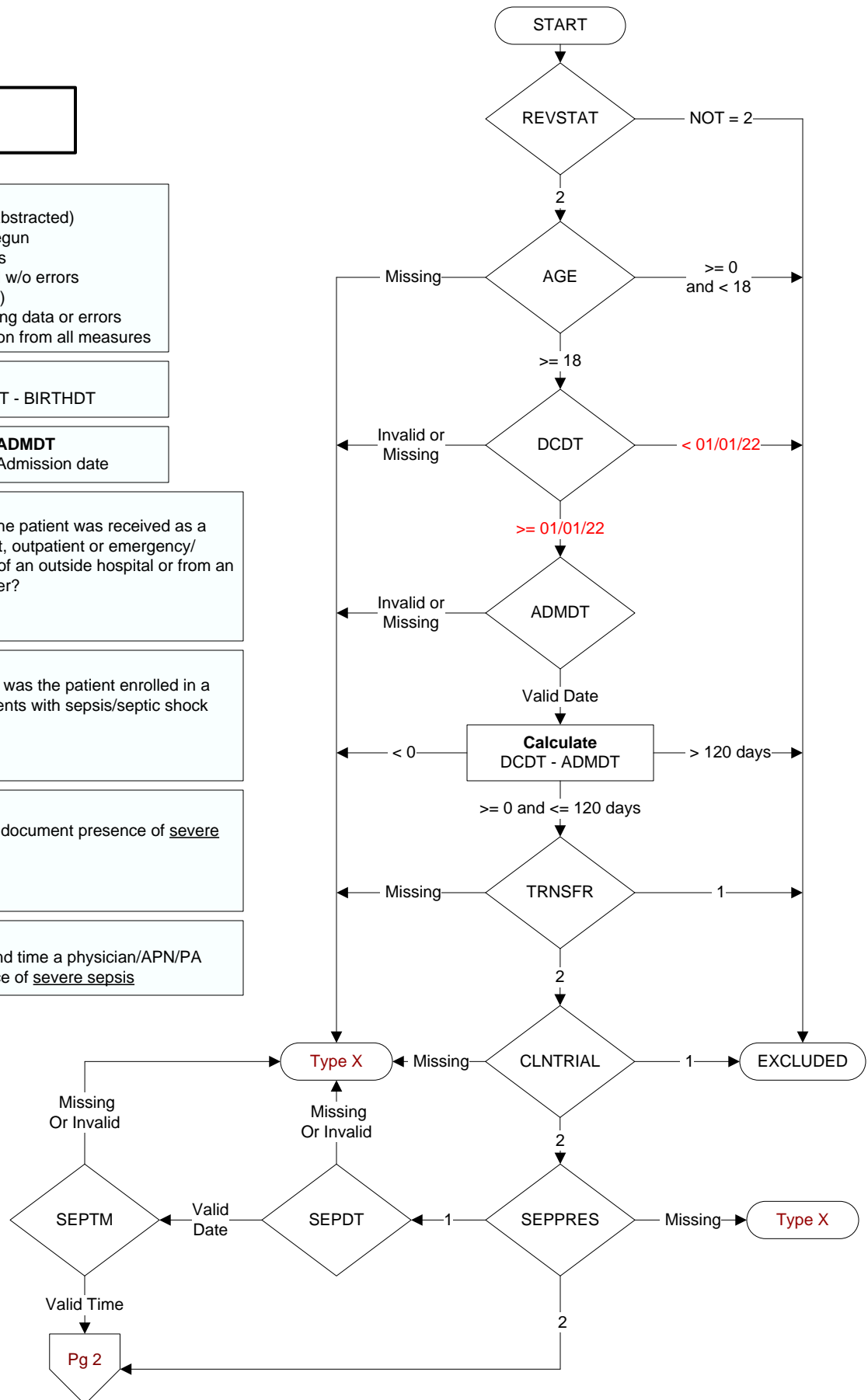
SEPPRES

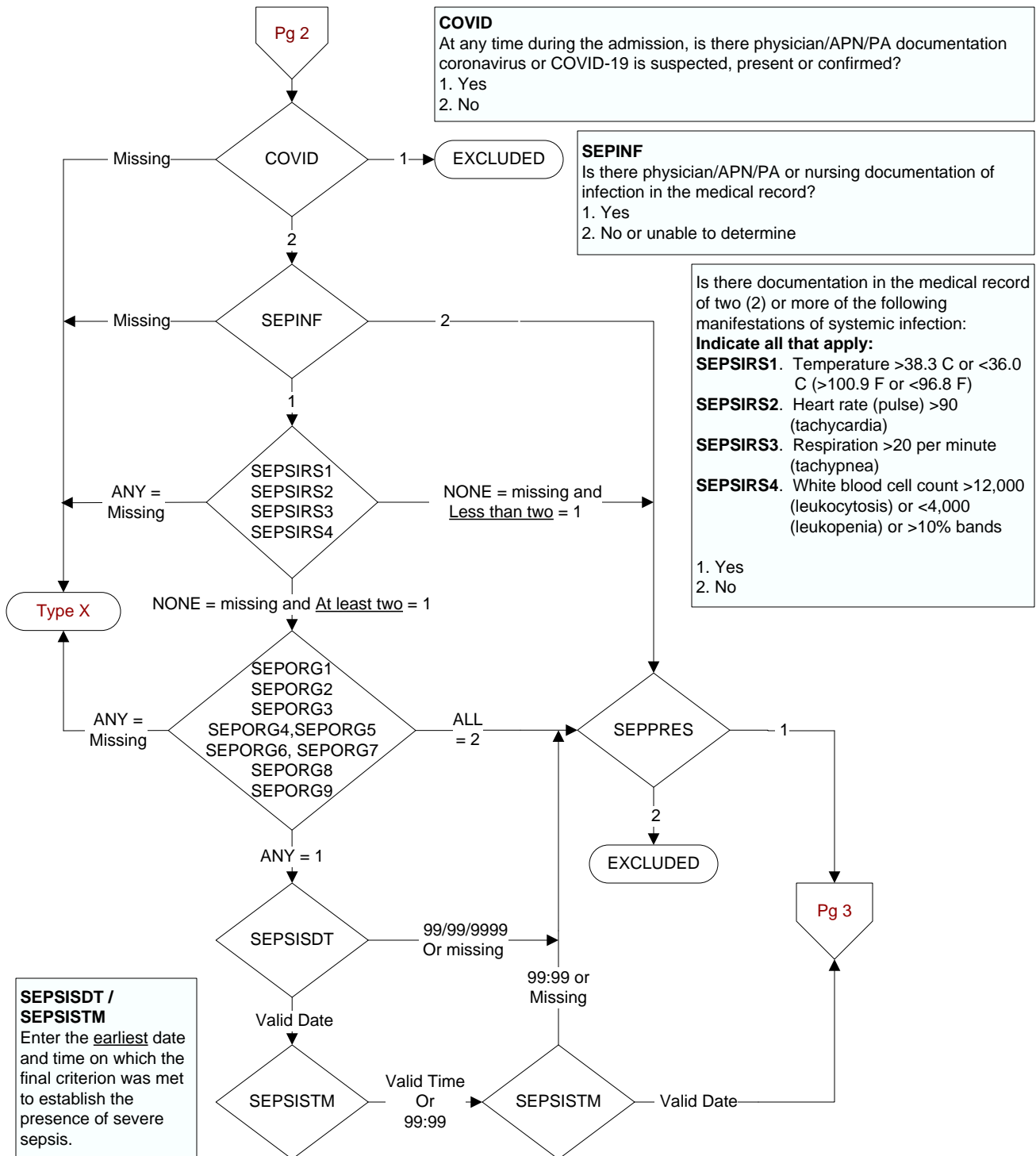
Did a physician/APN/PA document presence of severe sepsis?

- 1. Yes
- 2. No

SEPDT / SEPTM

Enter the earliest date and time a physician/APN/PA documented the presence of severe sepsis



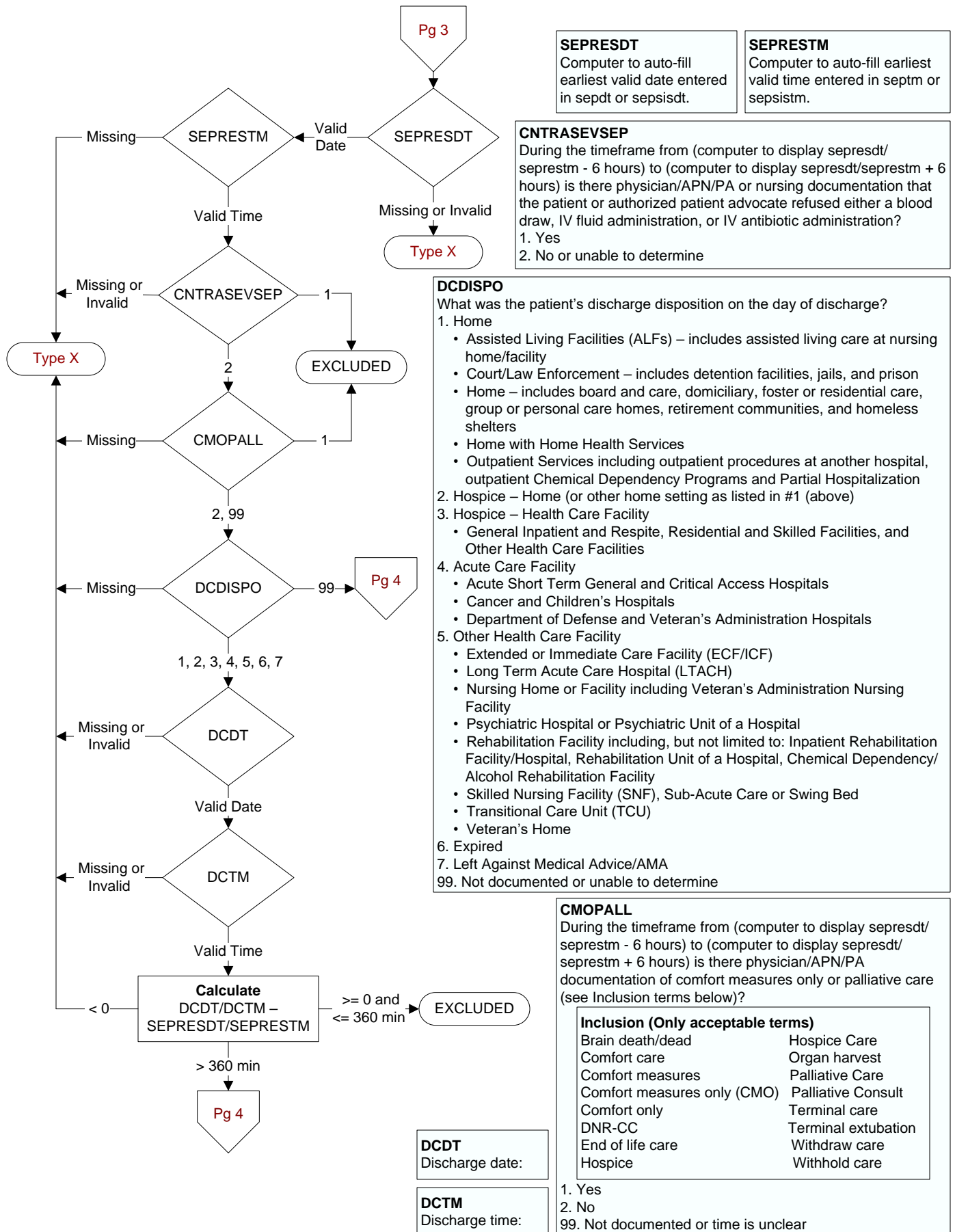


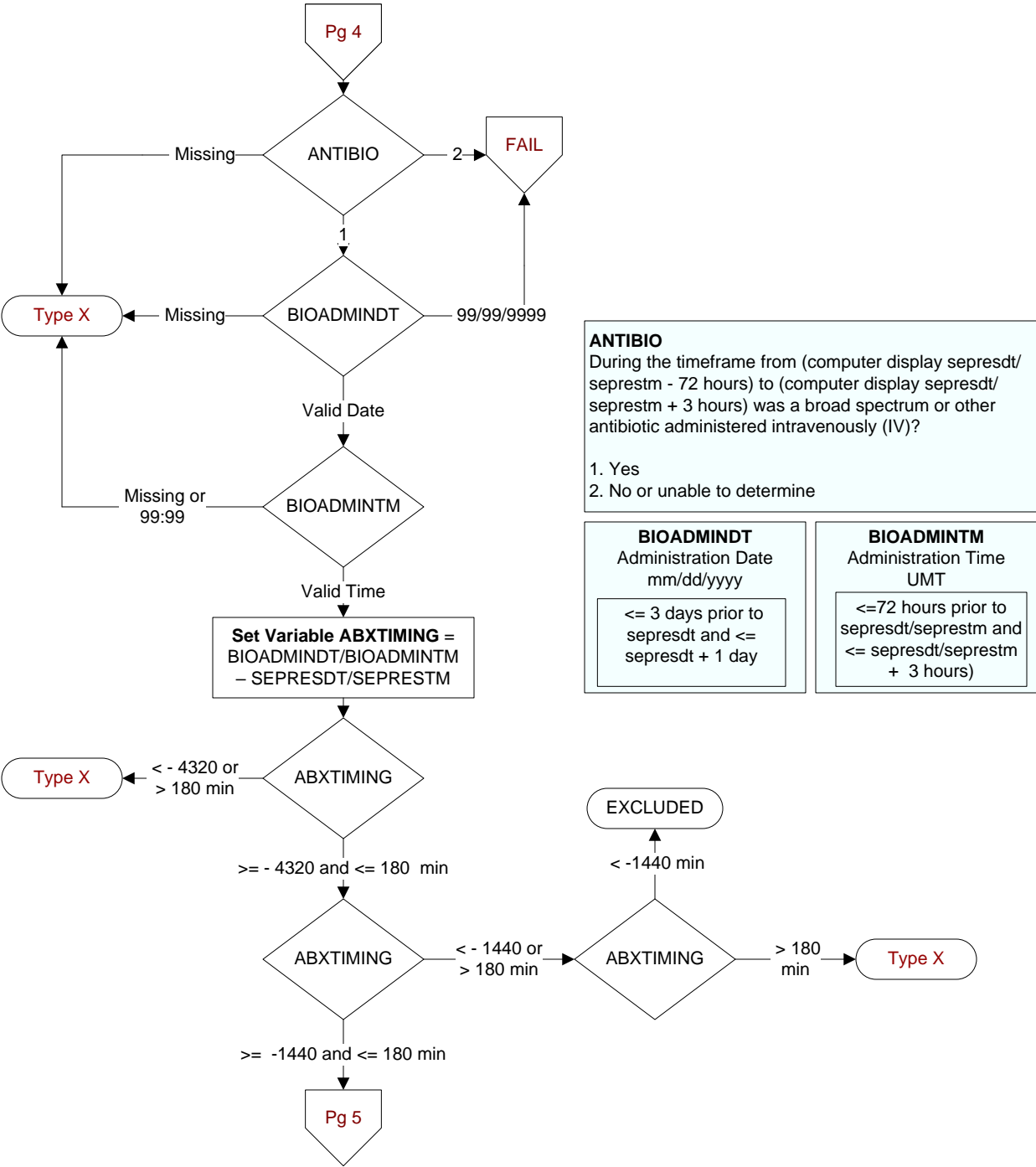
Is there documentation of organ dysfunction in the medical record?

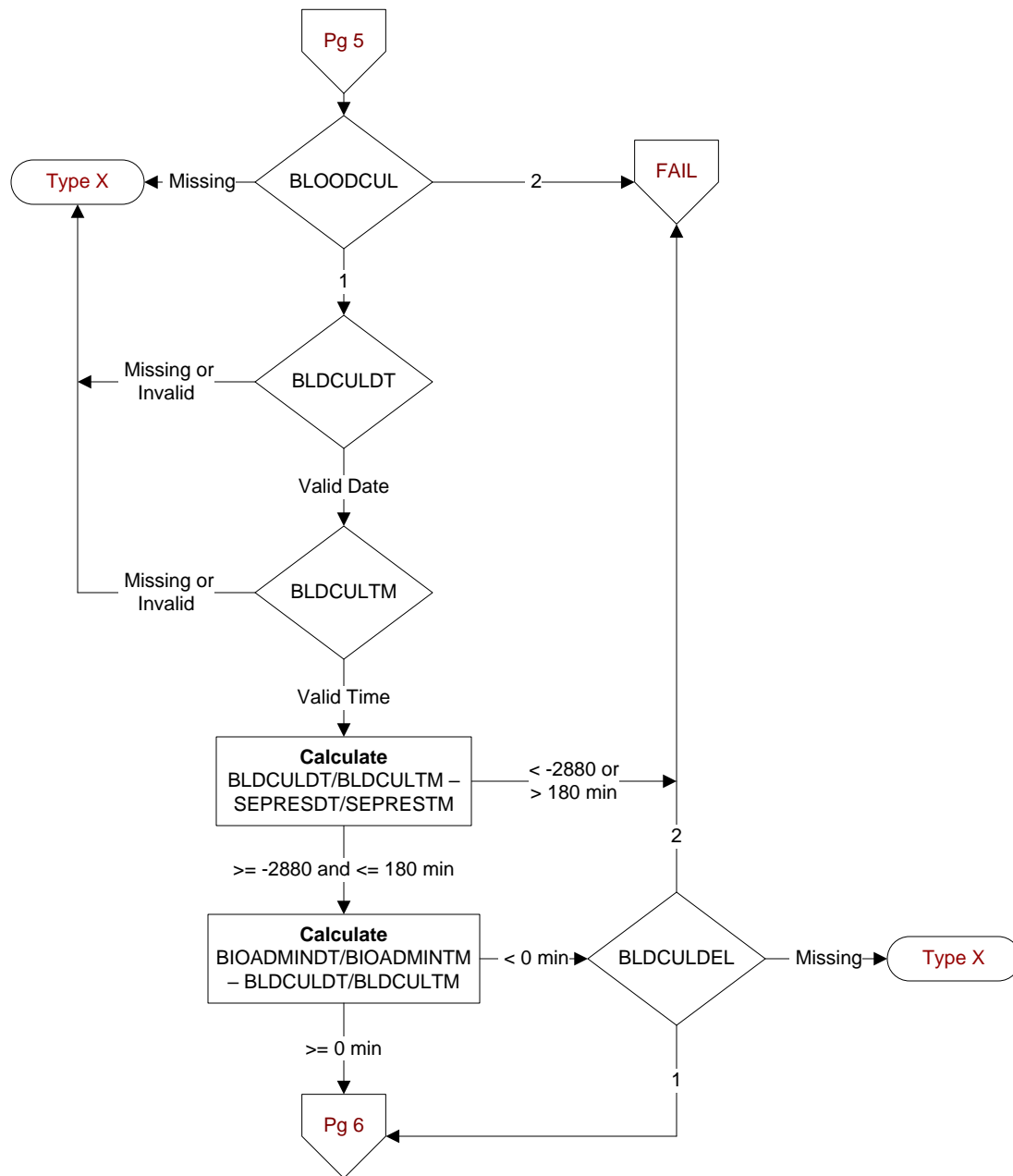
Indicate all that apply:

- SEPORG1.** Systolic blood pressure (SBP) < 90 mmHg or mean arterial pressure (MAP) < 65 mmHg
SEPORG2. Systolic blood pressure (SBP) decrease of more than 40 mmHg (see definitions/decision (D/D) rules)
SEPORG3. Acute respiratory failure as evidenced by a new need for invasive or non-invasive mechanical ventilation (see D/D rules)
SEPORG4. Creatinine > 2.0 (see D/D rules)
SEPORG5. Urine output < 0.5mL/kg/hour for 2 consecutive hours (see D/D rules)
SEPORG6. Total bilirubin > 2 mg/dL (34.2 mmol/L)
SEPORG7. Platelet count < 100,000
SEPORG8. INR > 1.5 or aPTT > 60 seconds (see D/D rules)
SEPORG9. Lactate > 18.0 mg/dL (>2 mmol/L)

1. Yes
2. No





**BLOODCUL**

During the time frame from [(If bioadmint/ bioadmintm - sepresdt/seprestm >= -1440 and < 0, computer to display sepresdt/ seprestm - 48 hours to sepresdt/seprestm + 3 hours); else computer to display (earliest bioadmint/ bioadmintm- 24 hours to sepresdt/ seprestm + 3 hours)], was a blood culture collected?

1. Yes
2. No or unable to determine

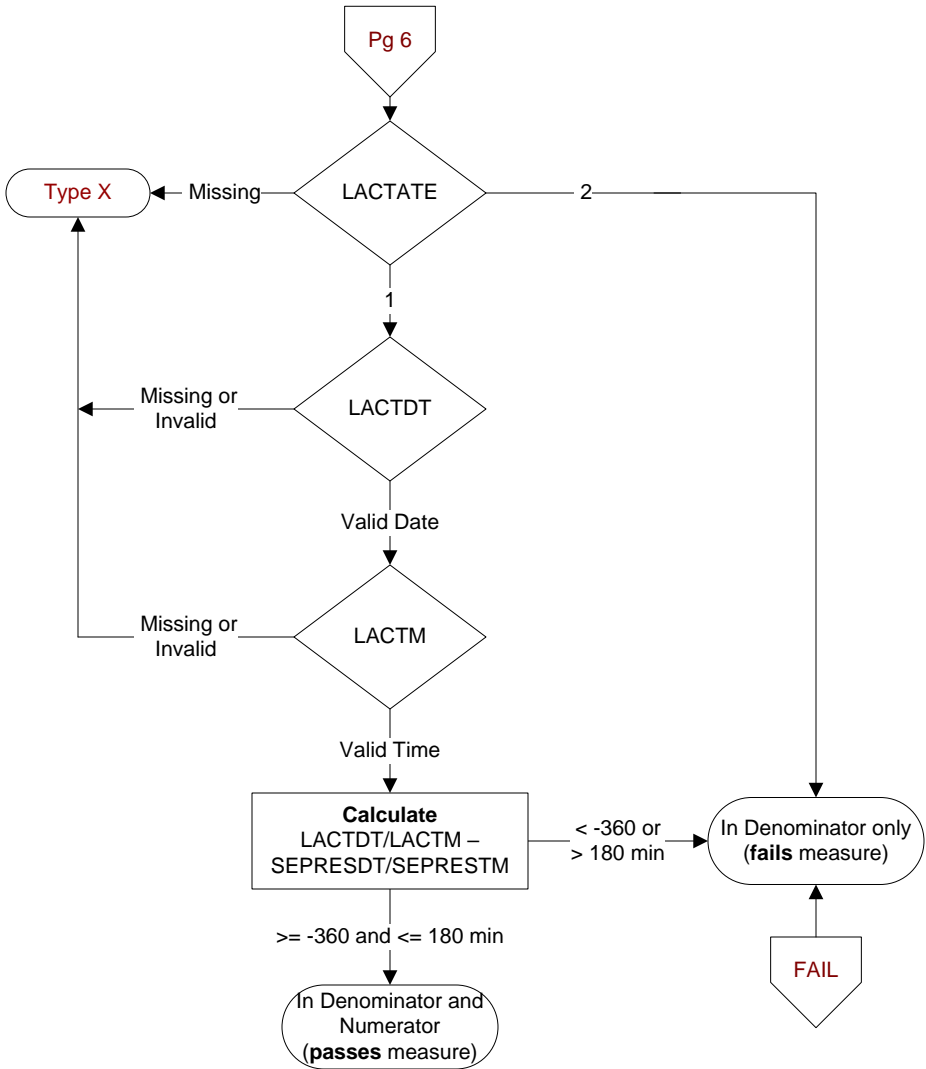
BLDCULDT / BLDCULTM

During the specified timeframe, enter the date and time the blood culture was collected.

BLDCULDEL

Is there documentation supporting an acceptable delay in collecting a blood culture?

1. Yes
2. No or unable to determine



LACTATE
During the timeframe from (computer display
sepresdt/seprestm - 6 hours to sepresdt/seprestm +
3 hours) was an initial lactate level drawn (or
collected)?
1. Yes
2. No

LACTDT / LACTM
Enter the date and time the initial
lactate level was drawn (or collected).