

Document Links:[CGPI Validation Module](#)[CGPI MH Module](#)**COHORT**

16. AMI - Outpatient visit
 48. Female, age 20-69
 50. Random Sample
 51. Random Sample MH
 54. Frail/Elderly
 60. DM Outpatient
 68. Contract CBOC

REVSTAT

REVIEW STATUS (not abstracted)

0. Abstraction has not begun
 1. Abstraction in progress
 2. Abstraction completed w/o errors
 3. TVG failure (exclusion)
 4. Record contains missing data
 5. Administrative exclusion

FEFLAG (rcvd on pull list)
 FE case flagged for CGPI
 review / scoring?
 0. No
 1. Yes

HOSPICE (Validation)

During the past year is there documentation in the medical
 record the patient is enrolled in a VHA or community-based
 hospice program?

1. Yes
 2. No

DEMENTDX2 (MH)

During the past year, does the record document a diagnosis
 of dementia/neurocognitive disorder as evidenced by one of
 the following ICD-10-CM diagnosis codes:

**A81.00, A81.01, A81.09, A81.2, A81.82, A81.89, A81.9,
 F01.50, F01.51, F02.80, F02.81, F03.90, F03.91, F10.27,
 F10.97, F13.27, F13.97, F18.17, F18.27, F18.97, F19.17,
 F19.27, F19.97, G23.1, G30.0, G30.1, G30.8, G30.9,
 G31.01, G31.09, G31.83, G90.3**

1. Yes
 2. No

PERMCI (MH)

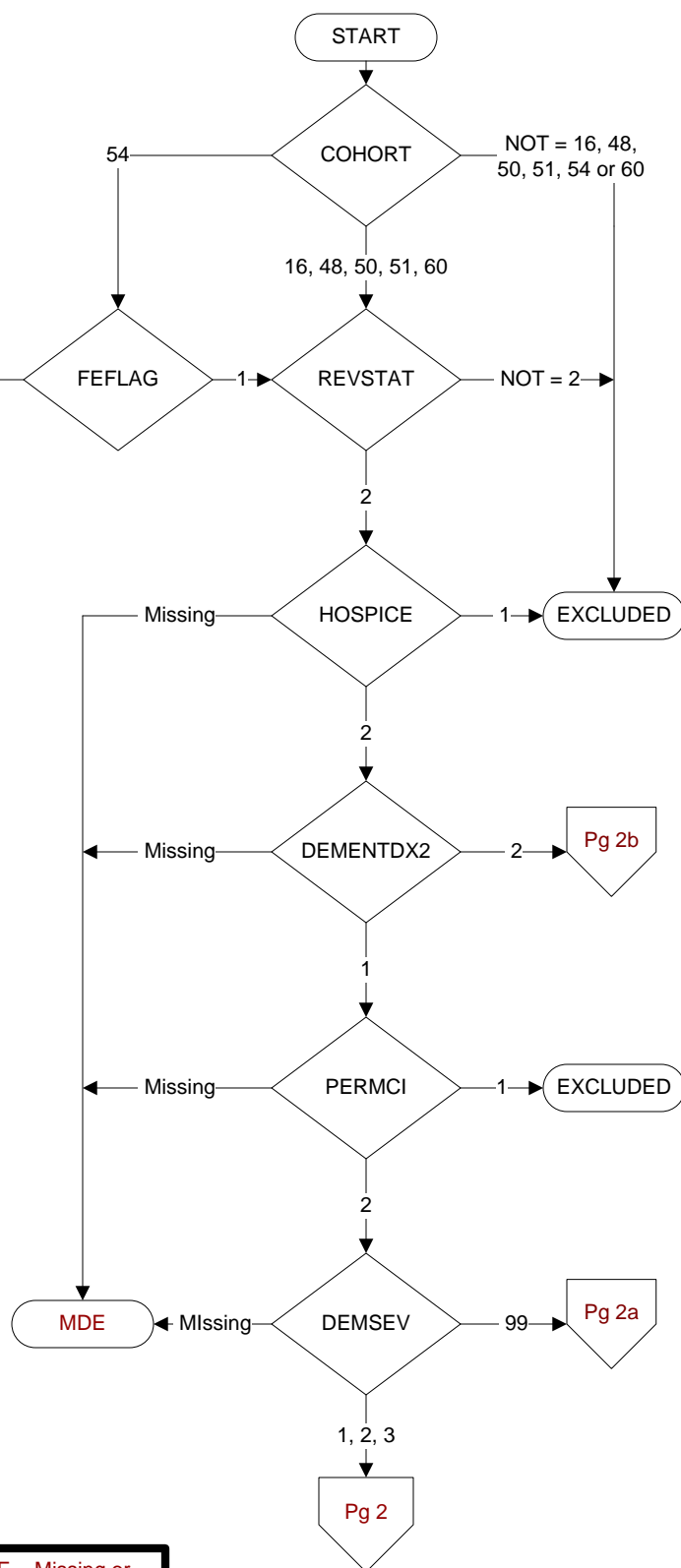
During the past year, did a physician/APN/PA or
 psychologist document that the patient has probable
 permanent cognitive impairment using a Clinical Reminder?

1. Yes
 2. No

DEMSEV (MH)

Was the severity of dementia assessed during the past
 year using one of the following standardized tools?

1. Clinical Dementia Rating Scale (CDR)
 2. Functional Assessment Staging Tool (FAST)
 3. Global Deterioration Scale (GDS)
 99. Severity of dementia was not assessed during the
 past year using one of the specified tools



**MDE = Missing or
 Invalid Data Exclusion
 (data error)**

