

Document Links:[CGPI Validation Module](#)[CGPI CVD Module](#)[CGPI Shared Module](#)**COHORT**

16. AMI - Outpatient visit
 48. Female, age 20-69
 50. Random Sample
 51. Random Sample MH
 54. Frail/Elderly
 60. DM Outpatient
 68. Contract CBOC

FEFLAG (rcvd on pull list)
 FE case flagged for CGPI
 review / scoring?

0. No
 1. Yes

OTHCARE (Validation)

Is there evidence in the medical record that
 within the past two years, the patient refused
 VHA Primary Care and is receiving ONLY his/
 her primary care in a non-VHA setting?

1. yes
 2. no

REVSTAT

REVIEW STATUS (not abstracted)

0. Abstraction has not begun
 1. Abstraction in progress
 2. Abstraction completed w/o errors
 3. TVG failure (exclusion)
 4. Record contains missing data
 5. Administrative exclusion from all measures

HOSPICE (Validation)

During the past year is there documentation in
 the medical record the patient is enrolled in a
 VHA or community-based hospice program?

1. Yes
 2. No

SELM1 (Validation)**Old Myocardial Infarction**

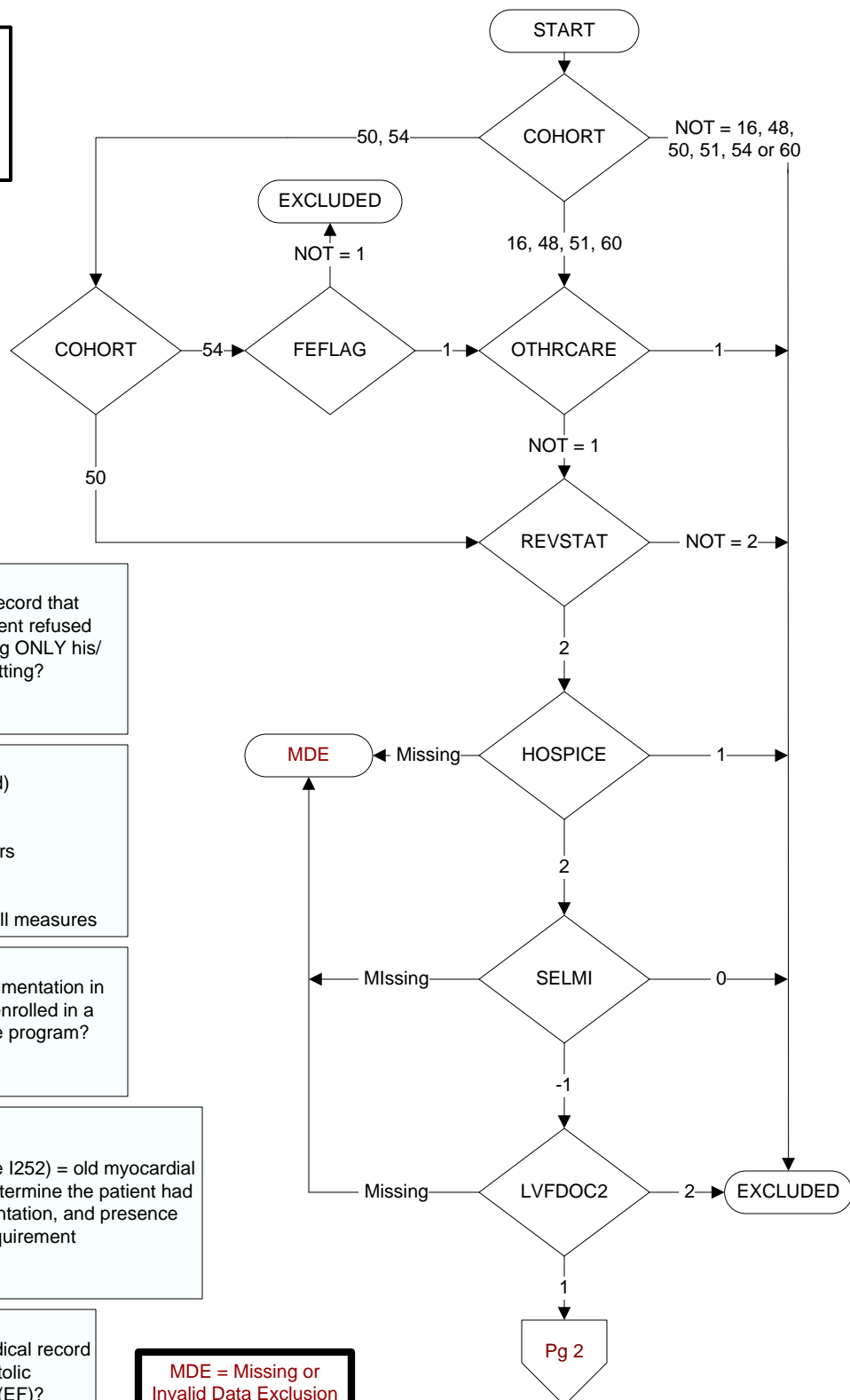
ICD-9-CM code 412 (ICD-10 code I252) = old myocardial
 infarction. The abstractor may determine the patient had
 a past AMI from clinician documentation, and presence
 of the code is not an absolute requirement

-1 Yes
 0 No

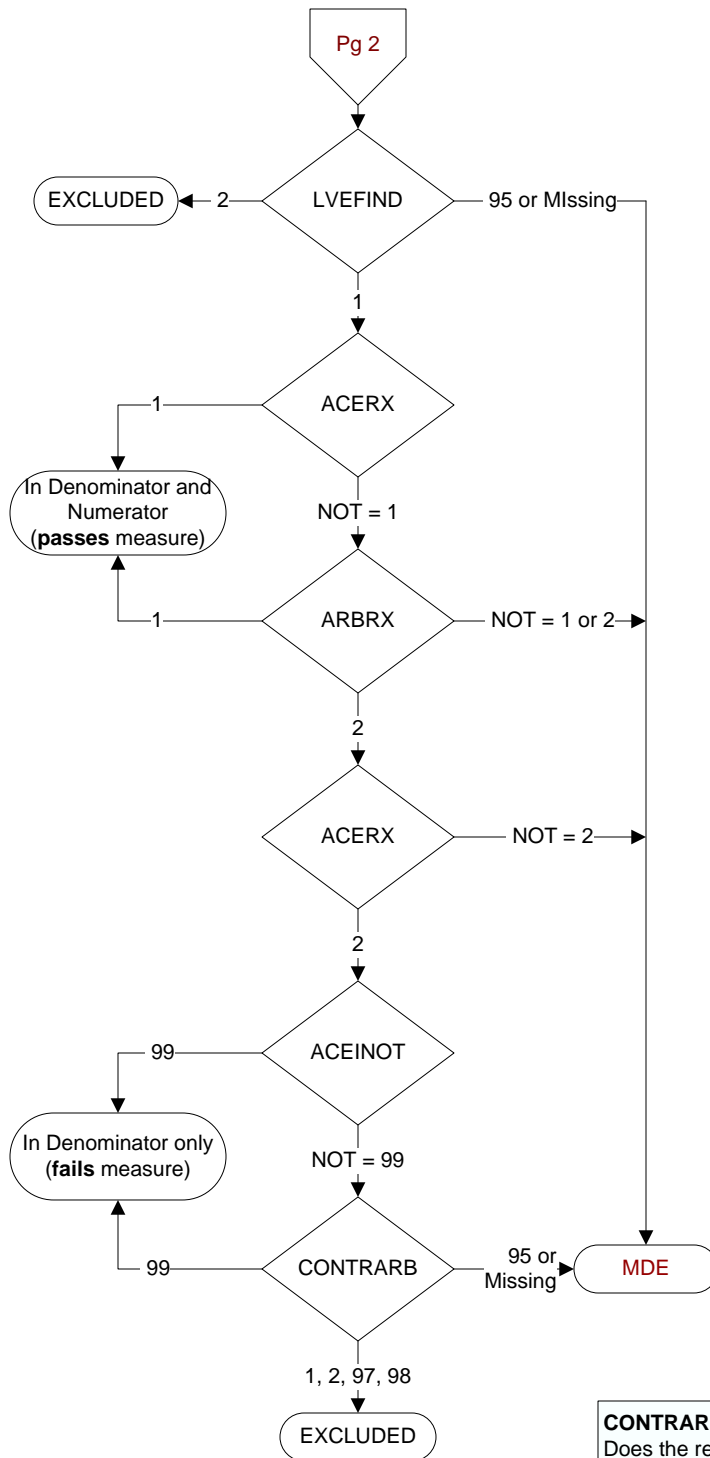
LVFDOC2 (CVD)

Is there documentation in the medical record
 of the patient's left ventricular systolic
 function (LVSF) /ejection fraction (EF)?

1. Yes
 2. No



**MDE = Missing or
 Invalid Data Exclusion
 (data error)**

**LVEFIND (CVD)**

Is the most recent left ventricular systolic function documented either as an ejection fraction (EF) less than 40% or narrative description consistent with moderate or severe systolic dysfunction (LVSD)?

1. yes
2. no
95. not applicable

ACEINOT (Shared)

At the most recent outpatient visit, was an angiotensin converting enzyme inhibitor (ACEI) included in the patient's current medications?

Examples of ACEI medications include, but are not limited to:

- enalapril
- captopril
- lisinopril
- benazepril
- ramipril
- combinations of ACEI with hydrochlorothiazide

1. Yes
2. No

ARBRX (Shared)

At the most recent outpatient visit, was an angiotensin II receptor antagonist (ARB or AIIRA) included in the patient's current medications?

Examples of ARB medications include, but are not limited to:

- candesartan
- eprosartan
- irbesartan
- losartan
- valsartan
- combinations of ARB with hydrochlorothiazide

1. Yes
2. No
95. Not applicable

ACEINOT (Shared)

Does the record document any of the following reasons for not prescribing an ACEI?

1. ACEI allergy
5. Moderate or severe aortic stenosis
95. Not applicable
97. Other reasons documented by a physician/APN/PA or pharmacist for not prescribing an ACEI
98. Patient refusal of ACEI medications documented by physician/APN/PA or pharmacist
99. No documented reason

CONTRARB (Shared)

Does the record document any of the following reasons for not prescribing an ARB?

1. ARB (AIIRA) allergy or sensitivity
2. Moderate or severe aortic stenosis
95. Not applicable
97. Other reasons documented by a physician, APN, PA, or pharmacist for not prescribing an ARB
98. Patient refusal of ARBs documented by physician/APN/PA or pharmacist
99. No documented reason