

**Document Links:**[HBPC Instrument](#)**COHORT**

69 – Home Based Primary Care

**REVSTAT**

REVIEW STATUS (not abstracted)

- 0. Abstraction has not begun
- 1. Abstraction in progress
- 2. Abstraction completed w/o errors
- 3. Cohort validation failure (exclusion)
- 4. Record contains missing data
- 5. Administrative Exclusion

**HOSPICE**

During the past year is there documentation in the medical record the patient is enrolled in a VHA or community-based hospice program?

- 1. Yes
- 2. No

**JUL21**

Calculated field: (07/01/21 - BIRTHDT).

**HCSTATUS (HBPC)**

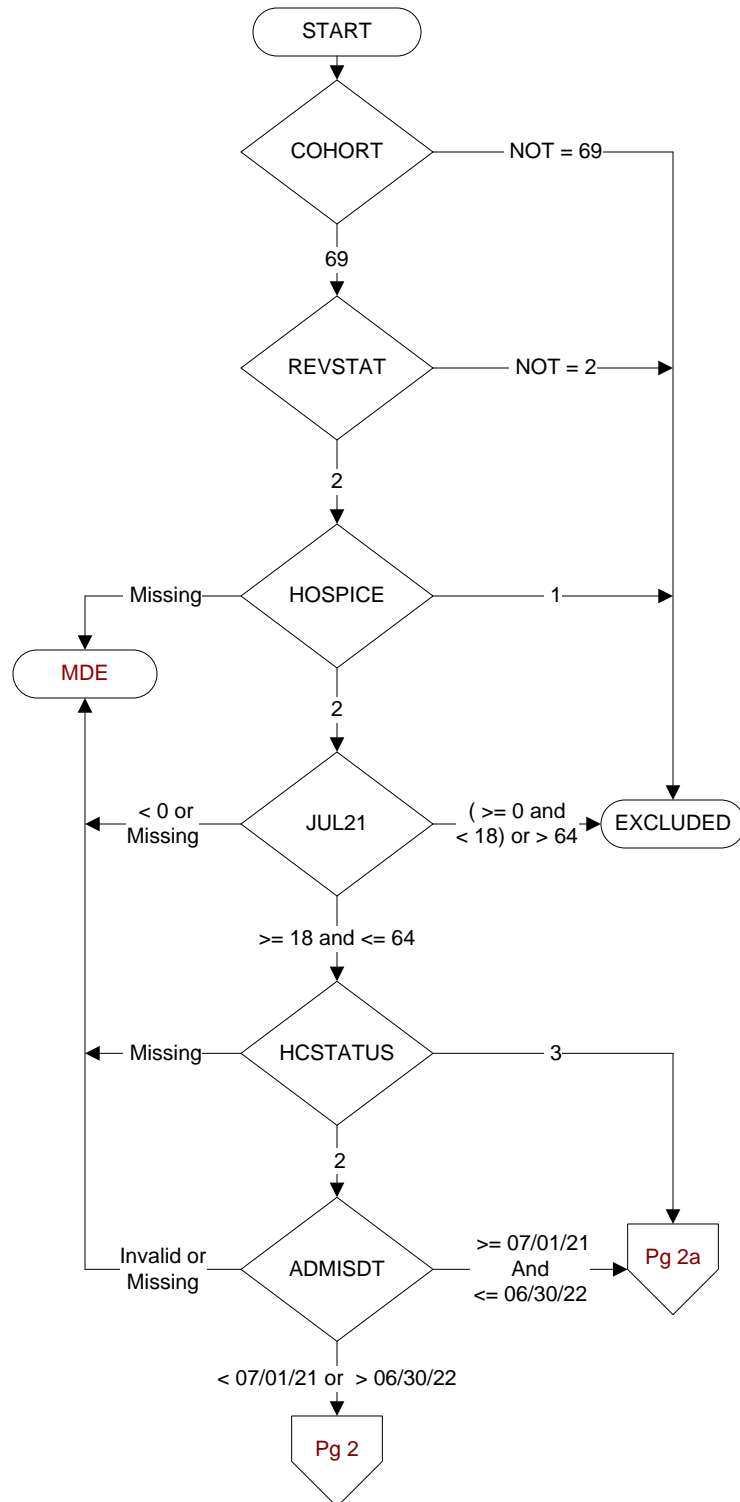
Counting from the most recent HBPC encounter within the study interval, enter the patient's status in regard to HBPC admission:

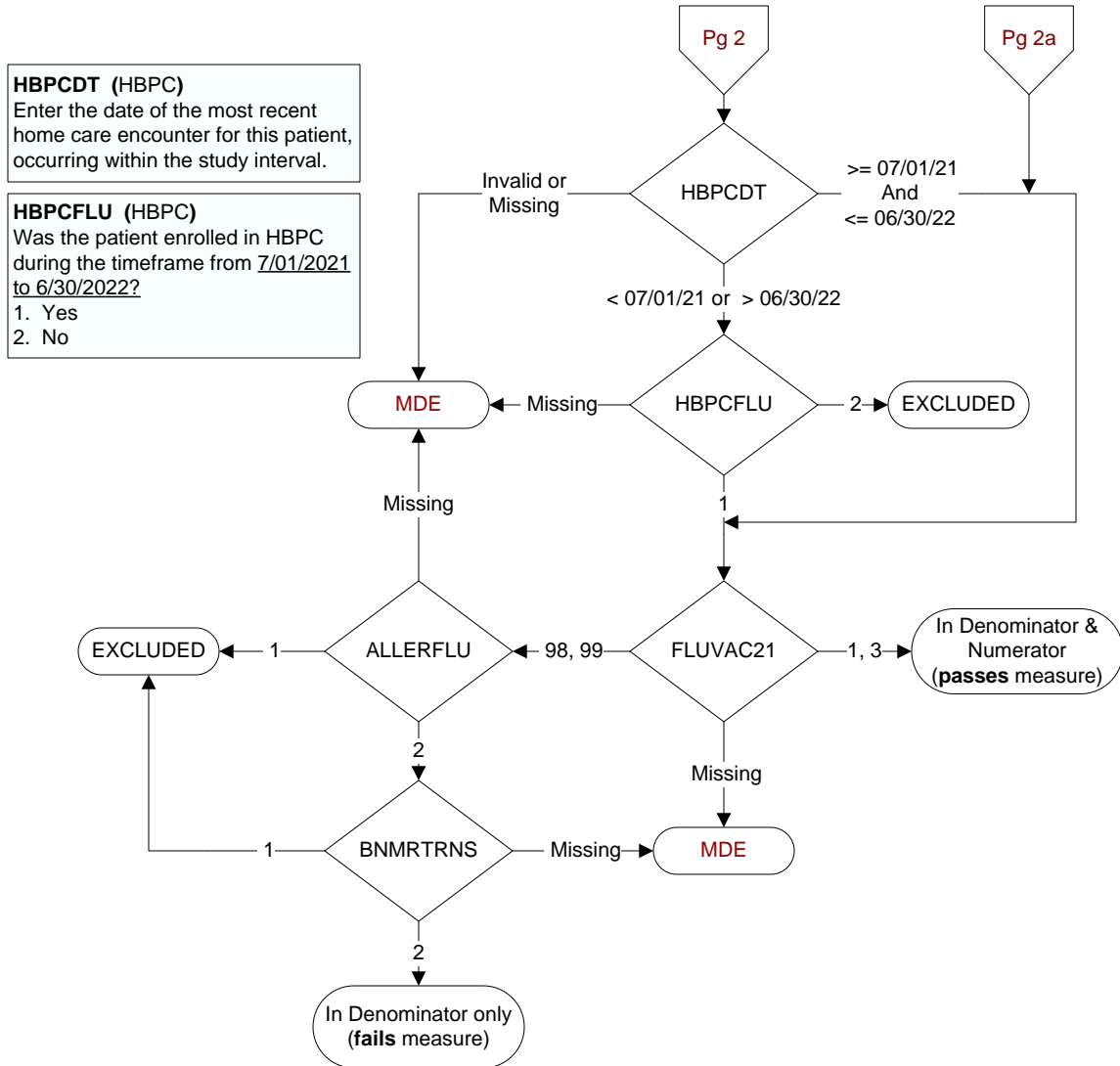
- 2. HBPC admission greater than or equal to 30 days but less than or equal to 1 year
- 3. HBPC admission greater than one year (>365 days from the admission date)

**ADMISDT (HBPC)**

Enter the HBPC admission date. **Admission date is date of the progress note documenting admission.**

**MDE = Missing or  
Invalid Data Exclusion  
(data error)**





**FLUVAC21**

During the period from (computer display 7/01/2021 to (pulldt or <= stdyend if stdyend > pulldt)), did the patient receive influenza vaccination?

- 1. received vaccination from VHA
- 3. received vaccination from private sector provider
- 98. patient refused vaccination
- 99. no documentation patient received vaccination

**ALLERFLU**

Is one of the following documented in the medical record?

- Previous severe allergic reaction to any component of the influenza vaccine, or after a previous dose of any influenza vaccine
  - History of Guillain-Barre Syndrome
- 1. Yes
  - 2. No

**BNMRTNRS**

Is there documentation in the medical record the patient had a bone marrow transplant during the past year?

- 1. Yes
- 2. No