**Document Links:**
[Global Measures Instrument](#)

COHORT (rcvd on pull list)
70 = Global Measures

REVSTAT
REVIEW STATUS (not abstracted)
0. Abstraction has not begun
1. Abstraction in progress
2. Abstraction completed w/o errors
3. Cohort validation failure (exclusion)
4. Record contains missing data
5. Administrative exclusion

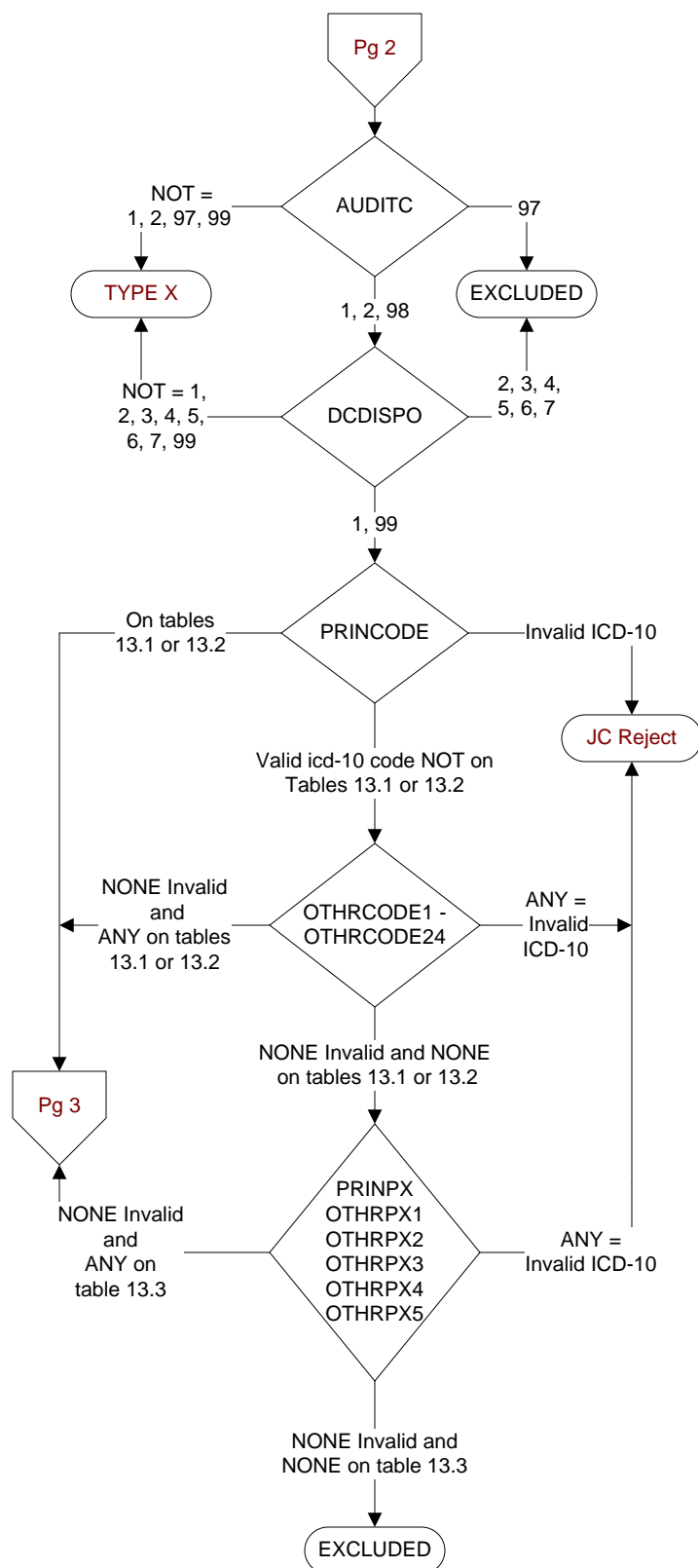
DCDT (Global Measures)
Discharge date (rcvd on pull list and may not be modified)

ADMDT (Global Measures)
Admission date:

BIRTHDT (Global Measures)
Patient date of birth

AGE (Calculated)
ADMDT - BIRTHDT

COMFORT (Global Measures)
When is the earliest physician, APN, or PA documentation of comfort measures only?
1. Day of arrival (day 0) or day after arrival (day 1)
2. Two or more days after arrival (day 2 or greater)
3. Comfort measures only documented during hospital stay, but timing unclear
99. Comfort measures only was not documented by the physician/APN/PA or unable to determine

**AUDITC** (Global Measures)

Was the patient screened for alcohol misuse with the AUDIT-C within the first day of admission (by end of Day 1)?

1. Yes
2. No
97. The patient was not screened for alcohol use within the first day of admission (by end of Day 1) because of cognitive impairment
98. Patient refused screening for alcohol misuse within the first day of admission (by end of Day 1)

DCDISPO (Global Measures)

What was the patient's discharge disposition on the day of discharge?

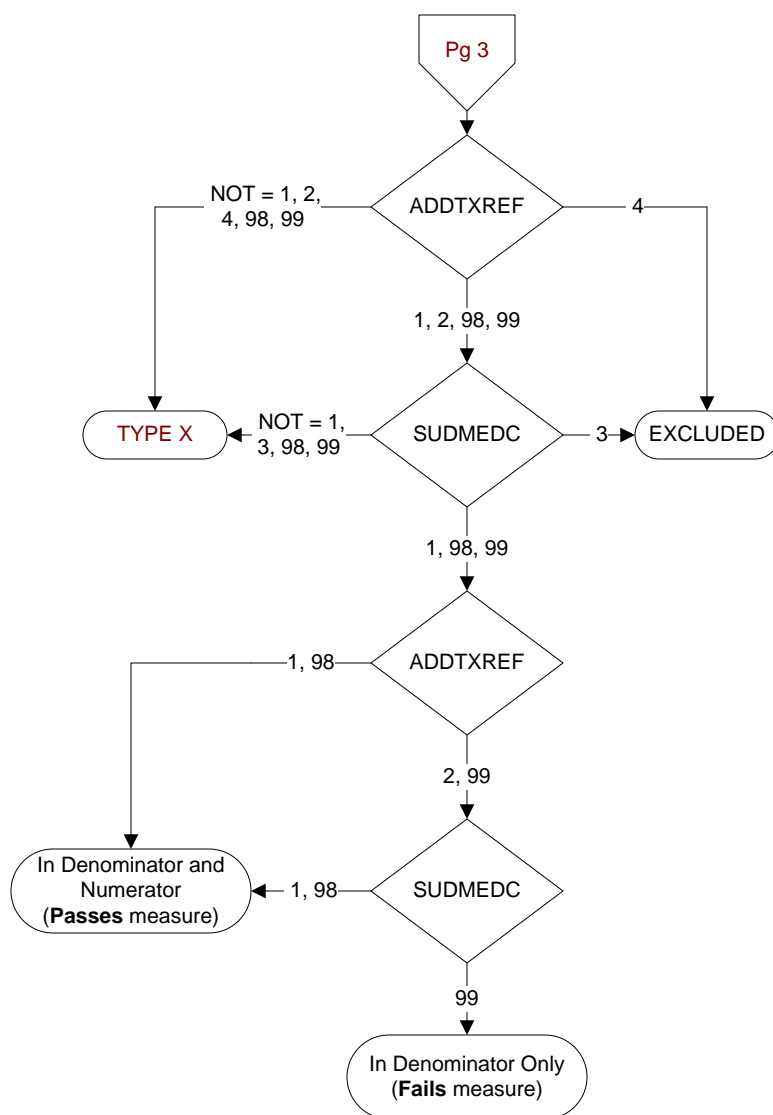
1. Home
 - Assisted Living Facilities
 - Court/Law Enforcement – includes detention facilities, jails, and prison
 - Board and care, domiciliary, foster or residential care, group or personal care homes, and homeless shelters
 - Home with Home Health Services
 - Outpatient Services including outpatient procedures at another , hospital outpatient Chemical Dependency Programs and Partial Hospitalization
2. Hospice – Home
3. Hospice – Health Care Facility
 - General Inpatient and Respite, Residential and Skilled Facilities, and Other Health Care Facilities
4. Acute Care Facility
 - Acute Short Term General and Critical Access Hospitals
 - Cancer and Children's Hospitals
 - Department of Defense and Veteran's Administration Hospitals
5. Other Health Care Facility
 - Extended or Immediate Care Facility (ECF/ICF)
 - Long Term Acute Care Hospital (LTACH)
 - Nursing Home or Facility including Veteran's Administration Nursing Facility
 - Psychiatric Hospital or Psychiatric Unit of a Hospital
 - Rehabilitation Facility including, but not limited to: Inpatient Rehabilitation Facility/Hospital, or Rehabilitation Unit of a Hospital, Chemical Dependency/Alcohol Rehabilitation Facility
 - Skilled Nursing Facility (SNF), Sub-Acute Care or Swing Bed
 - Transitional Care Unit (TCU)
 - Veteran's Home
6. Expired
7. Left Against Medical Advice/AMA
99. Not documented or unable to determine

PRINCODE (Global Measures)
Enter the ICD-10-CM principal diagnosis code.

OTHRCODE1-24 (Global Measures)
Enter the ICD-10-CM other diagnosis codes:

PRINPX (Global Measures)
Enter the ICD-10-PCS principal procedure code

OTHRPX1-5 (Global Measures)
Enter the ICD-10-PCS other procedure codes

**ADDTXREF** (Global Measures)

Was a referral (i.e. an appointment with date and time) for addictions treatment made for the patient prior to discharge?

1. The appointment for addictions treatment with date and time was made by the healthcare provider/facility staff at any time prior to discharge
2. Referral information for addictions treatment was given to the patient, but an appointment was NOT made by the provider/facility staff at any time prior to discharge
4. The patient is:
 - being discharged to a residence outside the USA
 - released to a court hearing and does not return
 - being discharged to jail/law enforcement

98. The patient refused the referral for addictions treatment and an appointment was not made.

99. The referral for addictions treatment was not offered at any time prior to discharge or unable to determine from the medical record documentation.

SUDMEDC (Global Measures)

Was one of the FDA-approved medications for alcohol or drug disorder prescribed at discharge?

1. A prescription for an FDA-approved medication for alcohol or drug disorder was given to the patient at discharge.
3. The patient is:
 - being discharged to a residence outside the USA
 - released to a court hearing and does not return
 - being discharged to jail/law enforcement
98. A prescription for an FDA-approved medication for alcohol or drug disorder was offered at discharge and the patient refused.
99. A prescription for an FDA-approved medication for alcohol or drug disorder was not offered at discharge, or unable to determine from medical record documentation.