

**Document Links:**[Global Measures Instrument](#)[Inpt MedRecon Module](#)**COHORT**

(rcvd on pull list)

70. Global Measures

**REVSTAT**

REVIEW STATUS (not abstracted)

- 0. Abstraction has not begun
- 1. Abstraction in progress
- 2. Abstraction completed w/o errors
- 3. Cohort validation failure
- 4. Record contains missing data
- 5. Administrative exclusion

**ADMDT (GM)**

Admission date:

**DCDT (GM)**

Discharge date:

**REVPTMED1-9 (IP MedRec)**

Upon admission or during the 24 hours after admission, is there evidence in the medical record that the prescribing provider's note included or referenced a medication list for review including all of the following components?

**Essential Medication List Component****REVPTMED1.** Active VA Prescriptions

- 1. Yes
- 2. No

**REVPTMED2.** Remote Active VA Prescriptions

- 1. Yes
- 2. No

**REVPTMED3.** Non-VA Medications

- 1. Yes
- 2. No

**REVPTMED4.** Expired VA Prescriptions (see D/D rules)

- 1. Yes
- 2. No

**REVPTMED5.** Discontinued VA Prescriptions (see D/D rules)

- 1. Yes
- 2. No

**REVPTMED6.** Pending Medication Orders (both Inpatient AND Outpatient)

- 1. Yes
- 2. No

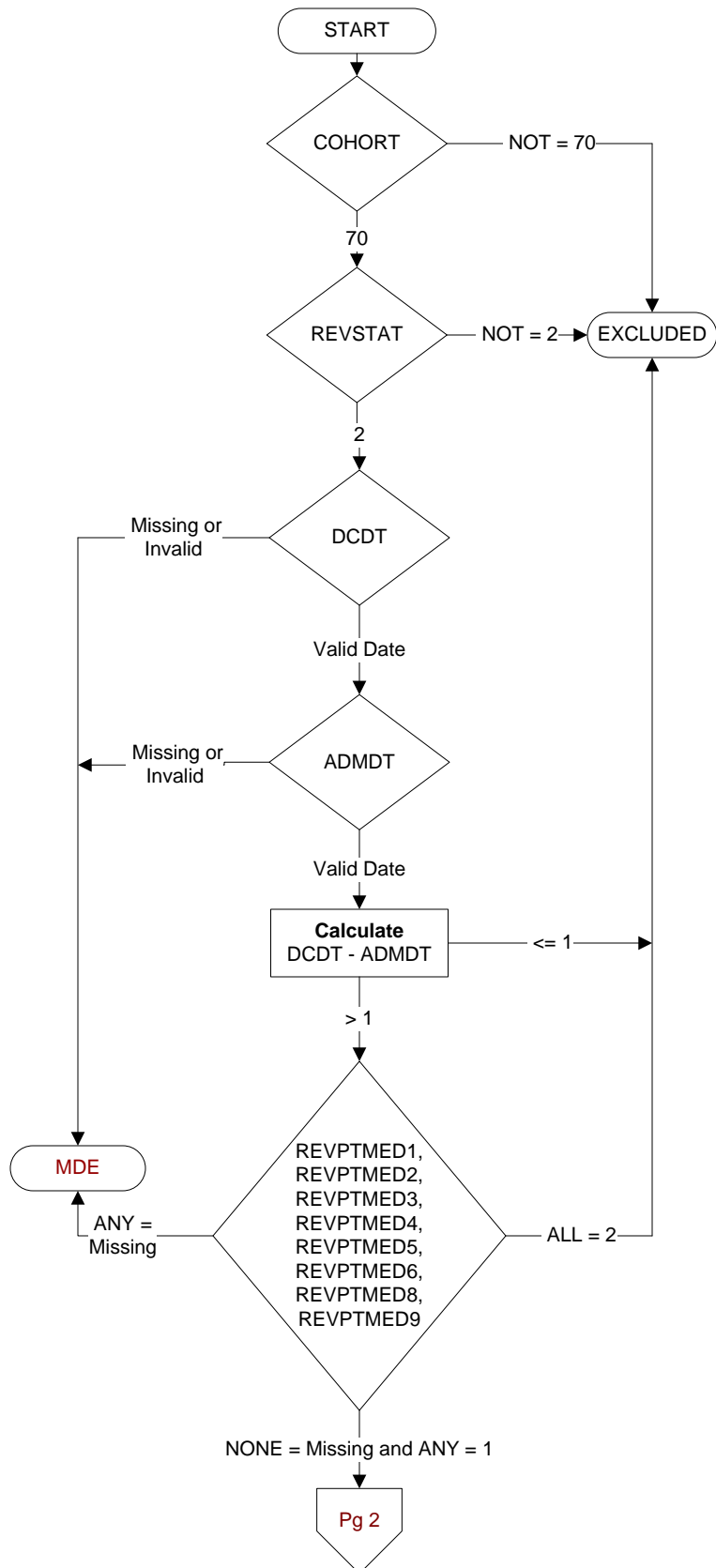
**REVPTMED8.** Inpatient Medications

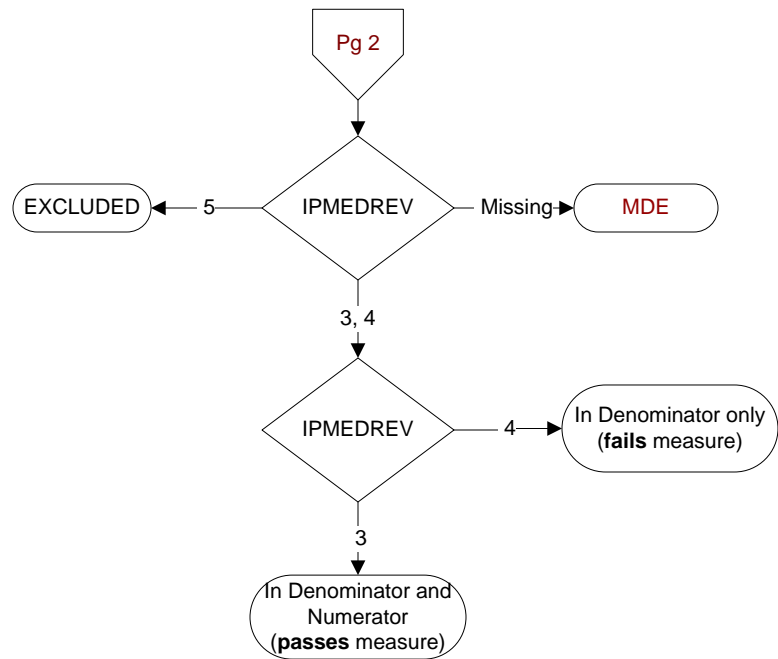
- 1. Yes
- 2. No

**REVPTMED9.** Allergies (both Remote Facility AND Local Facility)

- 1. Yes
- 2. No

**MDE = Missing or  
Invalid Data Exclusion  
(data error)**





**IPMEDREV (IP MedRec)**

Upon admission or during the 24 hours after admission, is there documentation the available medication list components were reviewed with the patient/caregiver?

3. Yes

4. No: There is no documentation that the available essential medication list components were reviewed with the patient/caregiver

5. Documentation the patient/caregiver refused or was unable to participate in review of essential medication list components