

Document Links:[Hospital Outpatient Instrument](#)**REVSTAT**

REVIEW STATUS (not abstracted)

0. Abstraction has not begun
1. Abstraction in progress
2. Abstraction completed w/o errors
3. TVG failure (exclusion)
4. Record contains missing data
5. Administrative exclusion

COHORT (rcvd on pull list)

- 72 = HOP – AMI
 73 = HOP – Chest Pain
 74 = HOP – ED
 76 = HOP - Stroke

EMCODE (HOP)

Enter the E/M code documented for this outpatient encounter.

DCCODE (HOP)

What was the patient's discharge disposition from the outpatient setting?

1. Home

- Assisted Living Facilities (ALFs) – includes assisted living care at nursing home/facility
- Court/Law Enforcement – includes detention facilities, jails, and prison
- Home – includes board and care, domiciliary, foster or residential care, group or personal care homes, retirement communities, and homeless shelters
- Home with Home Health Services
- Outpatient Services including outpatient procedures at another hospital, outpatient Chemical Dependency Programs and Partial Hospitalization

Hospitalization

2. Hospice – Home (or other home setting as listed in #1 above)

3. Hospice – Health Care Facility

- General Inpatient and Respite, Residential and Skilled Facilities, and Other Health Care Facilities

4a. Non-VA Acute Care Facility – General Inpatient Care

4b. Acute Care Facility – Critical Access Hospital

4c. Acute Care Facility - Cancer or Children's Hospitals

4d. Acute Care Facility - Department of Defense or Veteran's Administration Hospitals

5. Other Health Care Facility

- Extended or Immediate Care Facility (ECF/ICF)
- Long Term Acute Care Hospital (LTACH)
- Nursing Home or Facility including Veteran's Administration Nursing Facility
- Psychiatric Hospital or Psychiatric Unit of a Hospital
- Rehabilitation Facility including Inpatient Rehabilitation Facility/Hospital or Rehabilitation Unit of a Hospital
- Skilled Nursing Facility (SNF), Sub-Acute Care or Swing Bed
- Transitional Care Unit (TCU)
- Veteran's Home

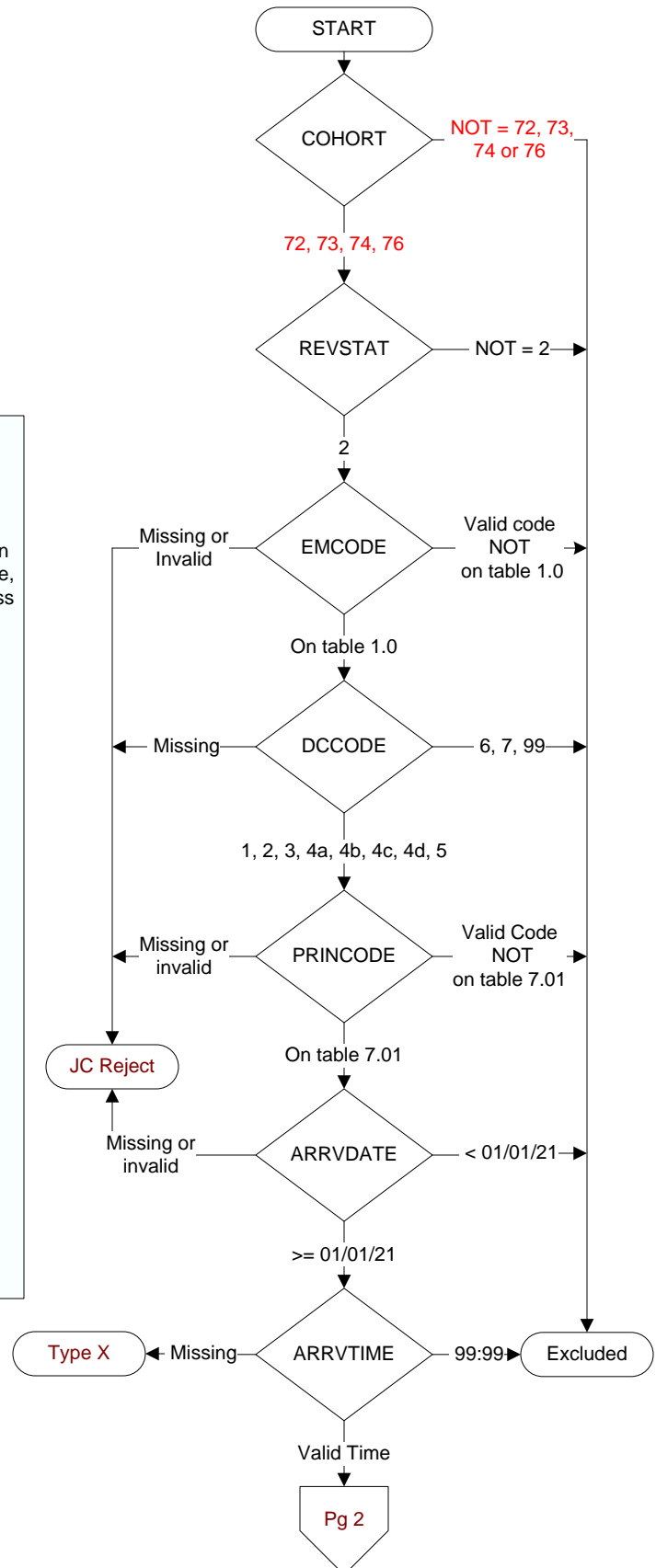
6. Expired

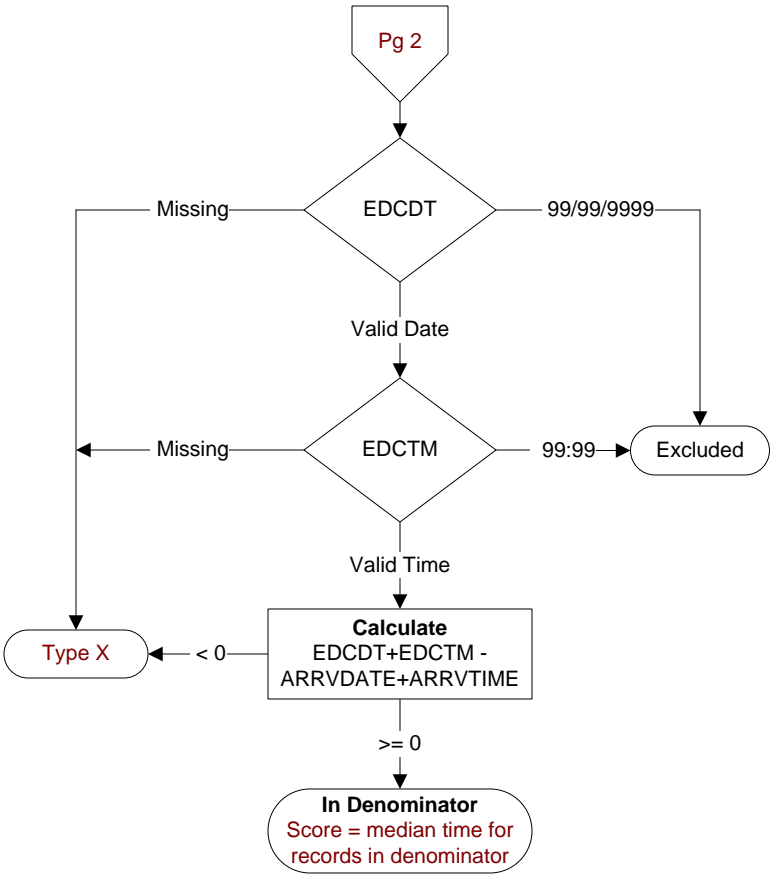
7. Left Against Medical Advice/AMA

99. Not documented or unable to determine

PRINCODE (HOP)

Enter the ICD-10-CM principal diagnosis code.

ARRVDATE (HOP)Enter the earliest documented date the patient arrived in the hospital outpatient setting at this VAMC.**ARRVTIME** (HOP)Enter the earliest documented time the patient arrived at the outpatient or emergency department at this VAMC.



EDCDT (HOP)
Enter the date the patient departed from the emergency department.

EDCTM (HOP)
Enter the time the patient departed from the emergency department.