

**Document Links:**[HBPC Instrument](#)**COHORT**

69 – Home Based Primary Care

**REVSTAT**

REVIEW STATUS (not abstracted)

- 0. Abstraction has not begun
- 1. Abstraction in progress
- 2. Abstraction completed w/o errors
- 3. Cohort validation failure (exclusion)
- 4. Record contains missing data
- 5. Administrative Exclusion

**HCSTATUS** (HBPC)

Counting from the most recent HBPC encounter within the study interval, enter the patient's status in regard to HBPC admission:

- 2. HBPC admission greater than or equal to 30 days but less than or equal to 1 year
- 3. HBPC admission greater than one year (>365 days from the admission date)

**INPTADM** (HBPC)

During the time frame from (computer display admisdt to admisdt + 30 days), did the record document the patient was hospitalized?

- 1. Yes
- 2. No

**HBPCDT** (HBPC)

Enter the date of the most recent home care encounter for this patient, occurring within the study interval.

**ADMISDT** (HBPC)

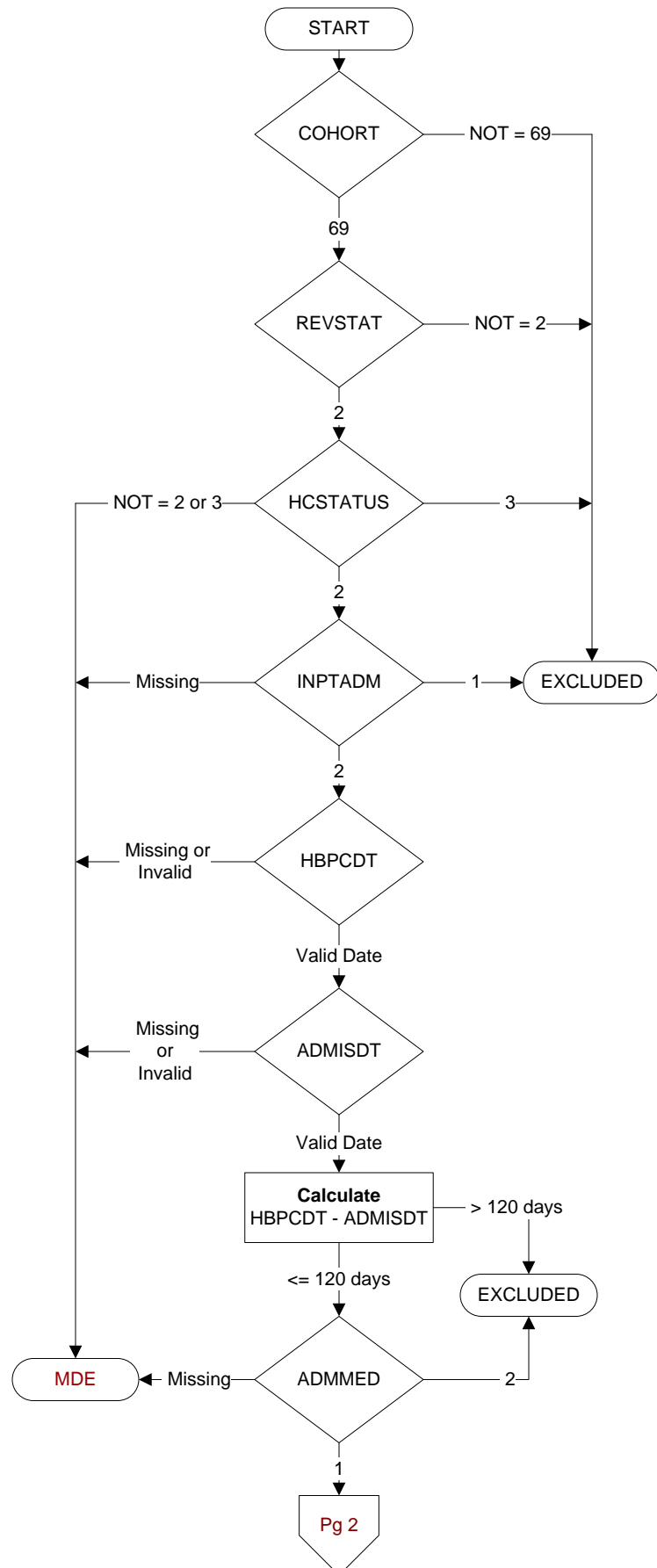
Enter the HBPC admission date. **Admission date is date of the progress note documenting admission.**

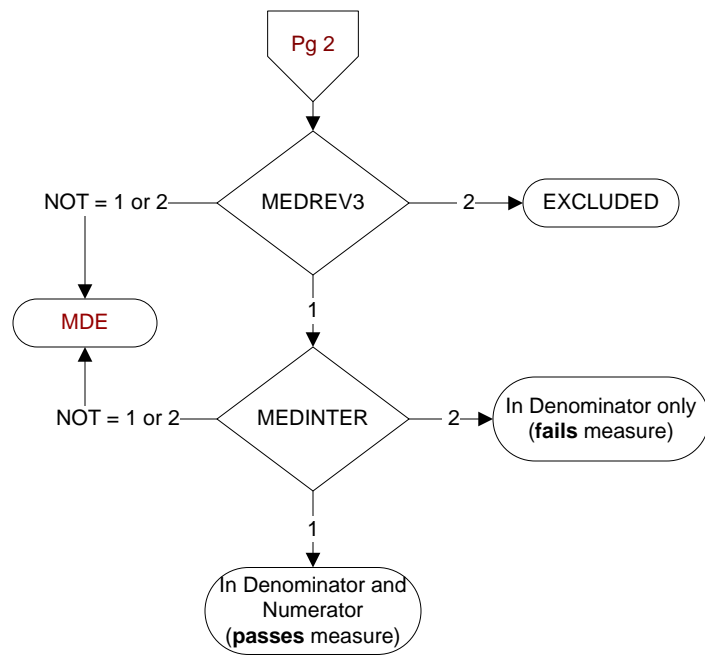
**ADMED** (HBPC)

At the time of HBPC admission, was the patient on at least one medication?

- 1. Yes
- 2. No

**MDE = Missing or  
Invalid Data Exclusion  
(data error)**





**MEDREV3 (HBPC)**

During the time frame from (computer to display admisdt to admisdt + 30 days), did the record document the patient's HBPC medication management plan in a note signed by the pharmacist?

1. Yes
2. No

**MEDINTER (HBPC)**

During the time frame from (computer to display admisdt to admisdt + 30 days), did the pharmacist document medications were assessed for drug-drug interactions?

1. Yes
2. No