

Document Links:[HBPC Instrument](#)**COHORT**

69 – Home Based Primary Care

REVSTAT

REVIEW STATUS (not abstracted)

0. Abstraction has not begun
1. Abstraction in progress
2. Abstraction completed w/o errors
3. Cohort validation failure (exclusion)
4. Record contains missing data
5. Administrative Exclusion

HCSTATUS (HBPC)

Counting from the most recent HBPC encounter within the study interval, enter the patient's status in regard to HBPC admission:

2. HBPC admission greater than or equal to 30 days but less than or equal to 1 year
3. HBPC admission greater than one year (>365 days from the admission date)

INPTADM (HBPC)

During the time frame from (computer display admisdt to admisdt + 30 days), did the record document the patient was hospitalized?

1. Yes
2. No

HBPCDT (HBPC)

Enter the date of the most recent home care encounter for this patient, occurring within the study interval.

ADMISDT (HBPC)

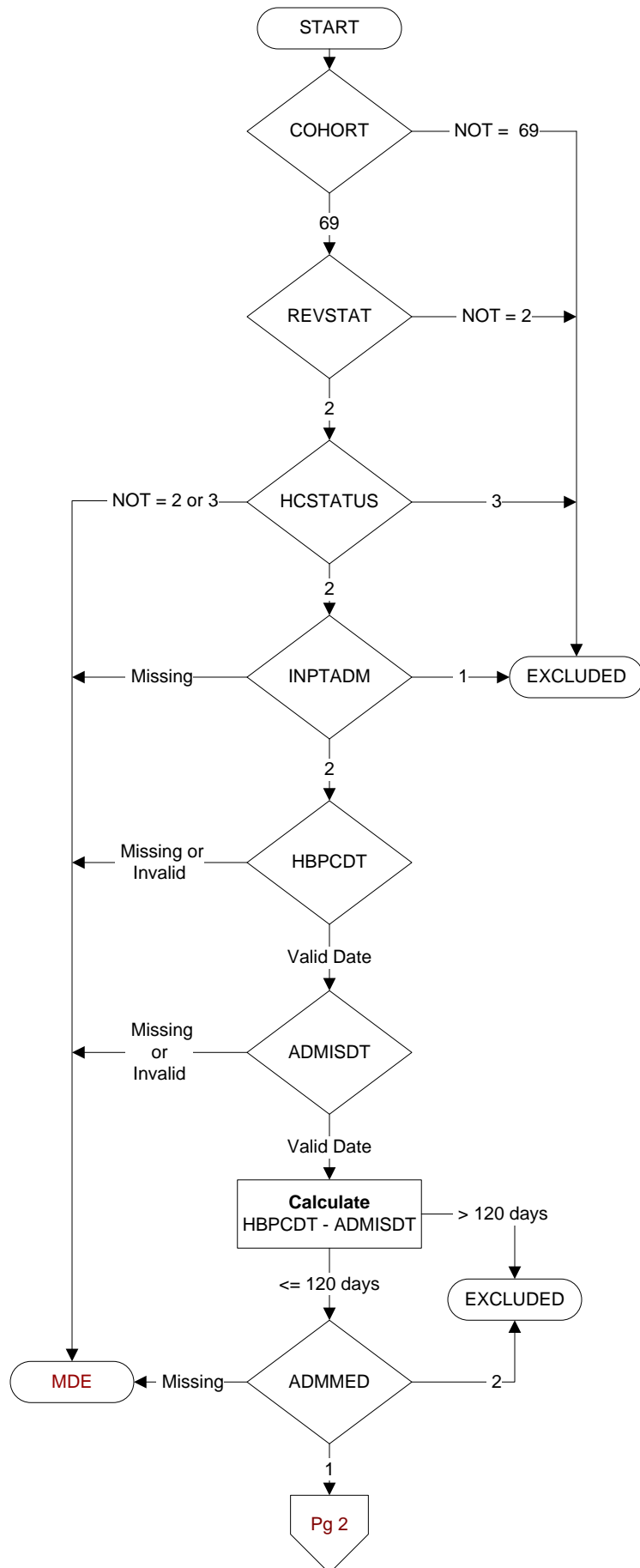
Enter the HBPC admission date. **Admission date is date of the progress note documenting admission.**

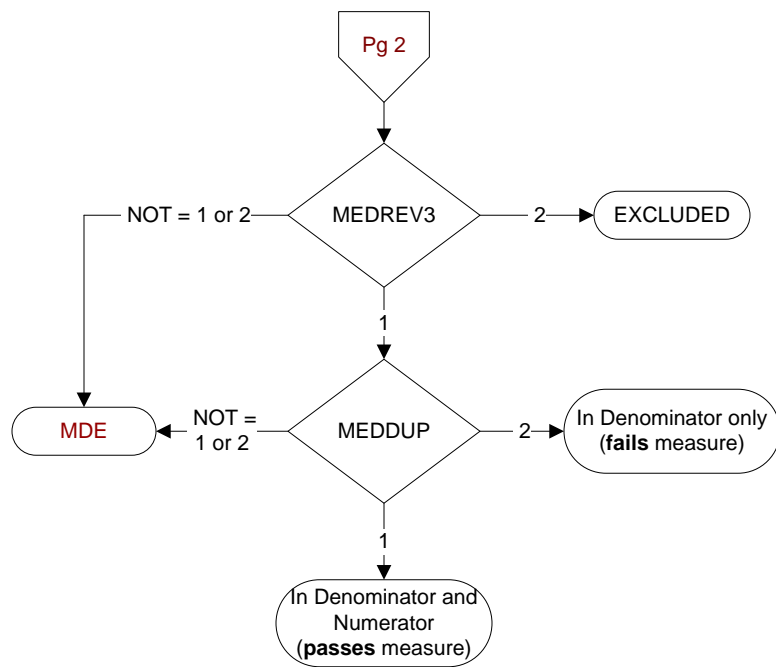
ADMMED (HBPC)

At the time of HBPC admission, was the patient on at least one medication?

1. Yes
2. No

MDE = Missing or Invalid Data Exclusion (data error)





MEDREV3 (HBPC)

During the time frame from (computer to display admisdt to admisdt + 30 days), did the record document the patient's HBPC medication management plan in a note signed by the pharmacist?
 1. Yes
 2. No

MEDDUP (HBPC)

During the time frame from (computer to display admisdt to admisdt + 30 days), did the pharmacist document medications were assessed for duplications in therapy?
 1. Yes
 2. No