

Document Links:[Transition of Care Instrument](#)**REVSTAT**

REVIEW STATUS (not abstracted)

0. Abstraction has not begun
1. Abstraction in progress
2. Abstraction completed w/o errors
3. TVG failure (exclusion)
4. Record contains missing required answers
5. Administrative Exclusion

AGE (calculated field)
ADMDT - BIRTHDT**READM**

During the timeframe from (computer to display dcddt) through (computer to display dcddt + 30 days) was there documentation of a readmission or direct transfer to an acute or non-acute inpatient care setting?

1. Yes
2. No

READMDCDT

Enter the discharge date for the most recent readmission that occurred on (computer to display readmdt).

PTEXPIRE

Is there documentation that the patient expired during the timeframe from 1/01/2021 to 6/30/2021?

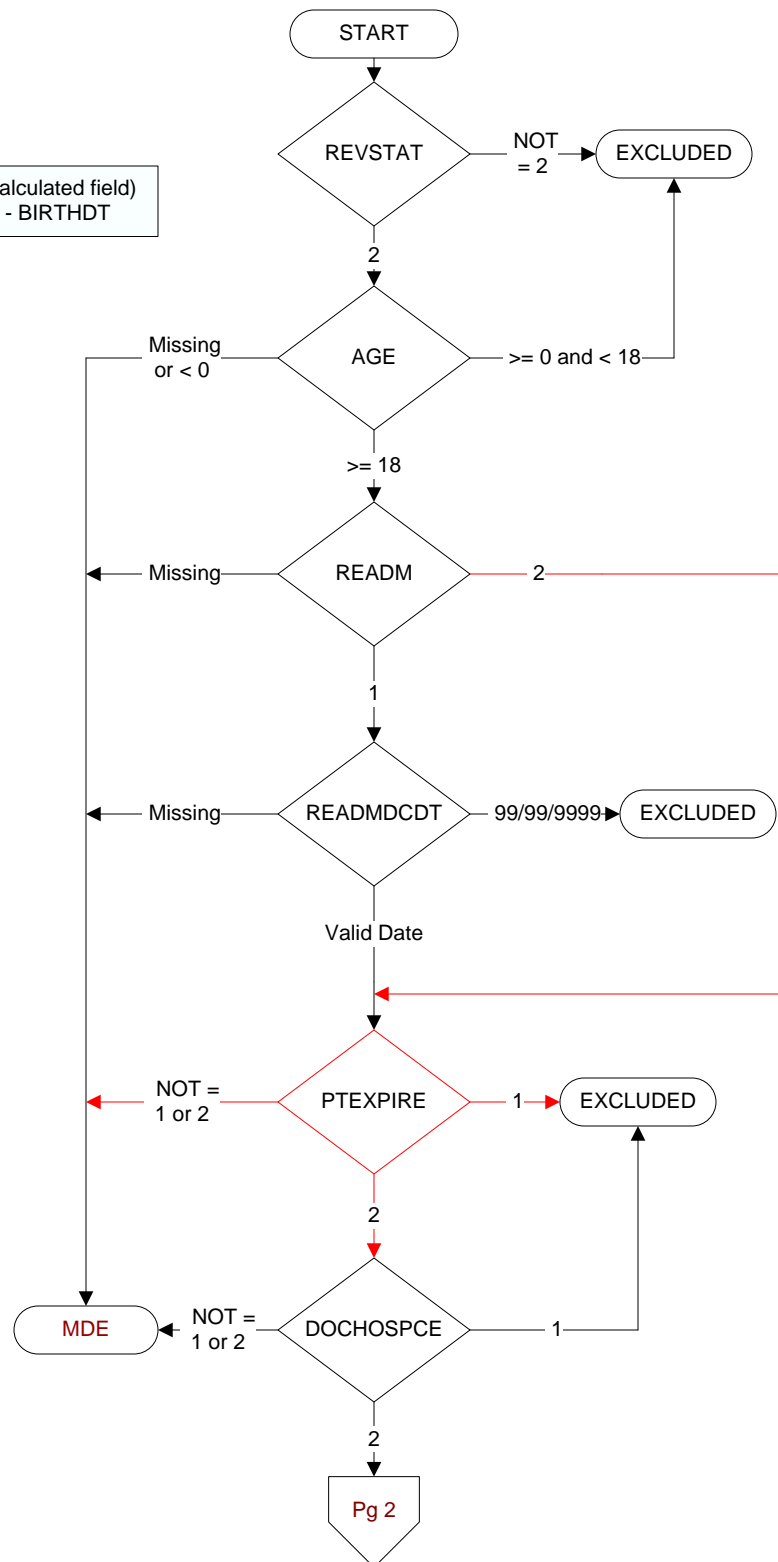
1. Yes
2. No

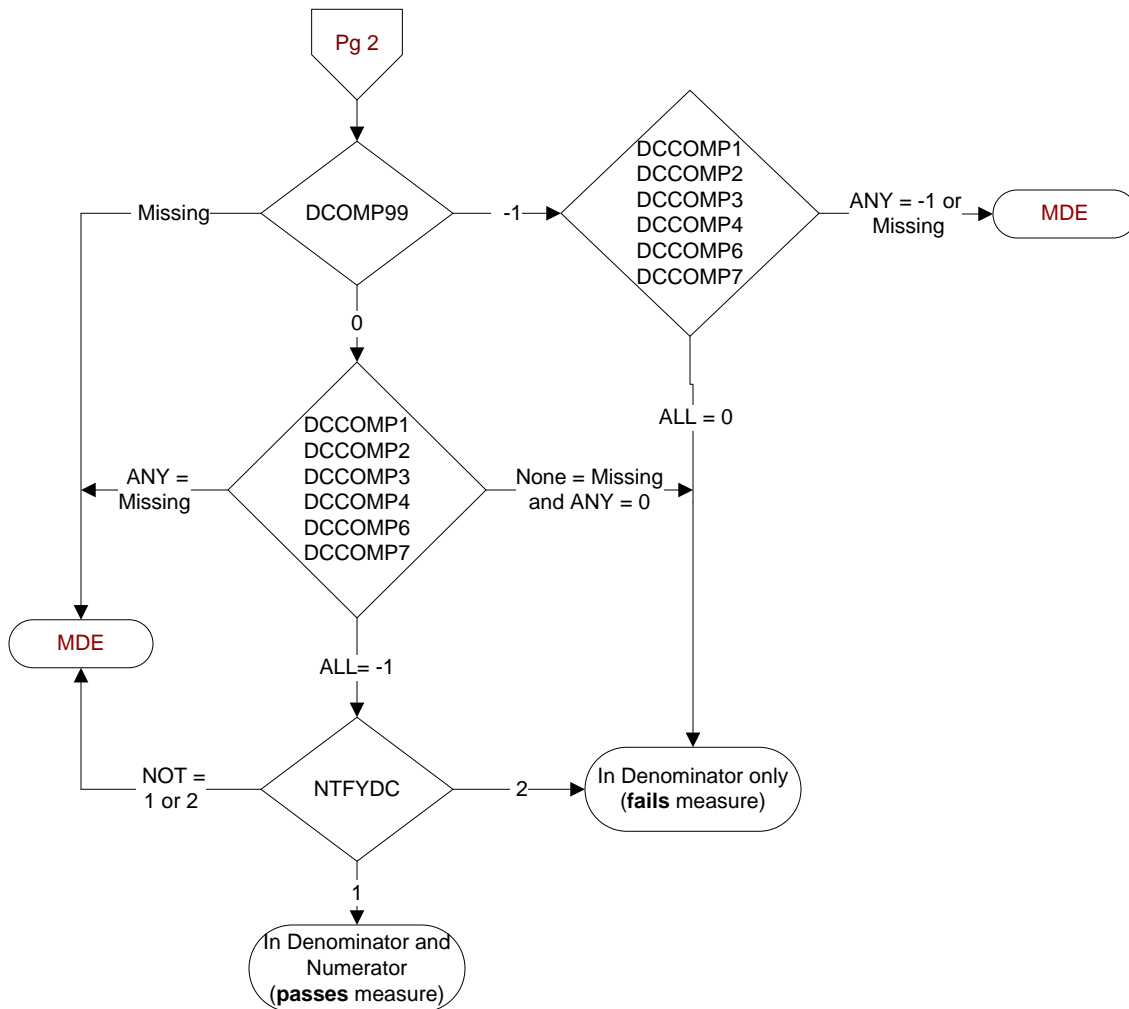
DOCHOSPCE

At any time during the year prior to [(If readm = 2 computer to display admdt) through (computer to display dcddt)] OR [(if readm = 1, computer to display readmdt) through (computer to display stdyend)] is one of the following documented in the medical record?

- The patient is enrolled in a VHA or community-based Hospice program
 - The patient has a diagnosis of cancer of the liver, pancreas, or esophagus
 - On the problem list it is documented the patient's life expectancy is less than 6 months?
1. Yes
 2. No

**MDE = Missing or
Invalid Data Exclusion
(data error)**





For the discharge on (computer to display, if readm = 2 display dcdt OR if readm = 1 readm dcdt), is there documentation the discharge information includes the following required components?

Select all that apply:

DCOMP1. The name of the practitioner responsible for the patient's care during the inpatient stay

DCOMP2. Procedures or treatment provided

DCOMP3. Diagnoses at discharge

DCOMP4. Current medication list

DCOMP6. Testing results, documentation of pending tests or no tests pending

DCOMP7. Instructions for patient care post-discharge

DCOMP99. None of the above

NTFYDC

For the discharge on (computer to display, if readm = 2, dcdt to dcdt + 2 days OR if readm = 1, readm dcdt to readm dcdt + 2 days), is there documentation in the medical record of receipt of discharge information?

1. Yes
2. No