

Document Links:[CGPI Validation Module](#)[CGPI PI Module](#)[CGPI MH Module](#)**COHORT**

16. AMI - Outpatient visit
 36. SCI Dx
 48. Female, age 20-69
 50. Random Sample
 51. Random Sample MH
 54. Frail/Elderly
 60. DM Outpatient
 61. Inpatient SCI
 68. Contract CBOC

SEENYR2 (Validation)

During the timeframe from (computer display stdybeg – 1 year to stdyend), was the Veteran seen by a physician, NP, PA, Psychologist, or Clinical Nurse Specialist in one of the “Nexus clinics”?

1. Yes
 2. No

OTHCARE (Validation)

Is there evidence in the medical record that within the past two years, the patient refused VHA Primary Care and is receiving ONLY his/her primary care in a non-VHA setting?

1. yes
 2. no

REVSTAT

REVIEW STATUS (not abstracted)

0. Abstraction has not begun
 1. Abstraction in progress
 2. Abstraction completed w/o errors
 3. TVG failure (exclusion)
 4. Record contains missing data
 5. Administrative exclusion from all measures

HOSPICE (PI module)

During the past year is there documentation in the medical record the patient is enrolled in a VHA or community-based hospice program?

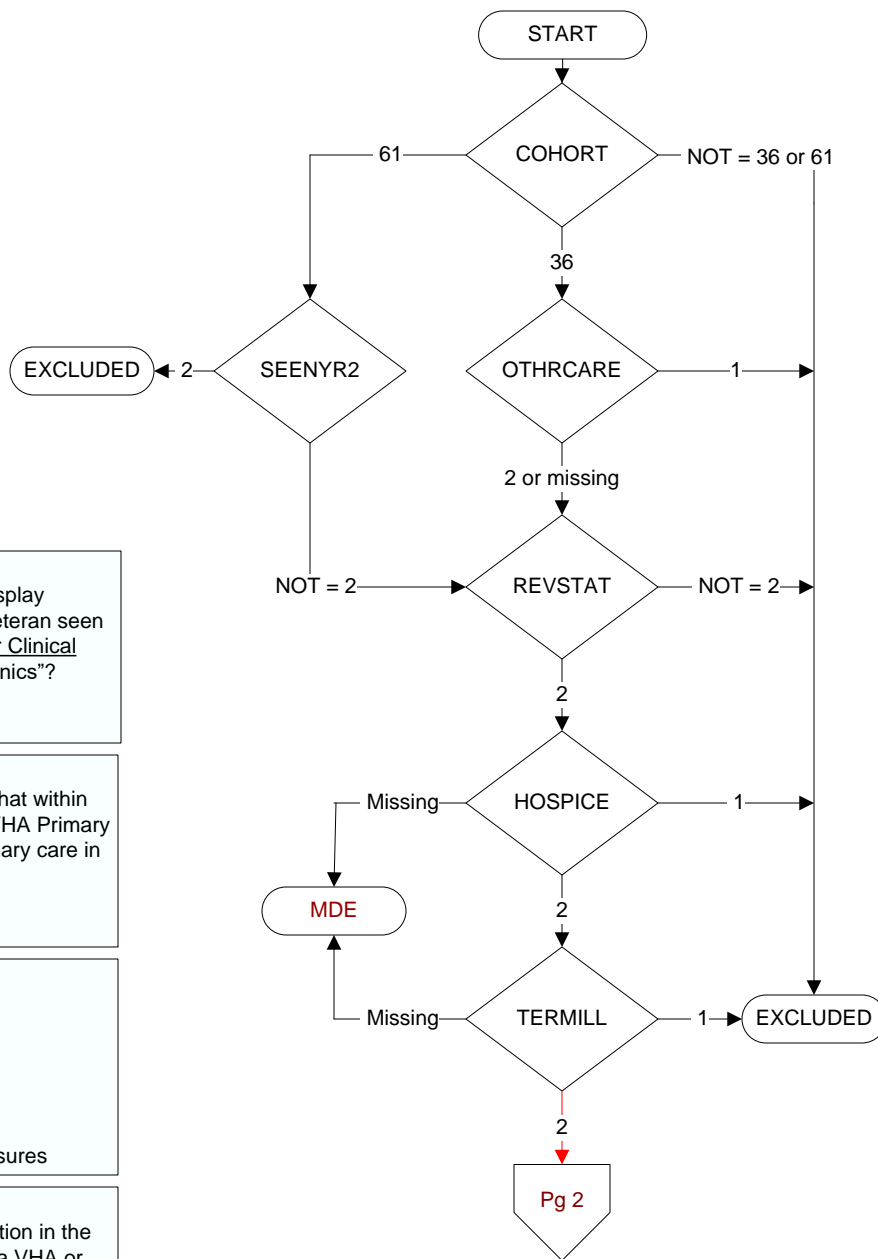
1. Yes
 2. No

TERMILL (PI module)

During the past year is one of the following documented in the medical record?

- The patient has a diagnosis of cancer of the liver, pancreas, or esophagus
- On the problem list it is documented the patient's life expectancy is less than 6 months?

1. Yes
 2. No



**MDE = Missing or
 Invalid Data Exclusion
 (data error)**

DEMENTDX2 (MH)

During the past year, does the record document a diagnosis of dementia/neurocognitive disorder as evidenced by one of the following ICD-10-CM diagnosis codes:

A81.00, A81.01, A81.09, A81.2, A81.82, A81.89, A81.9, F01.50, F01.51, F02.80, F02.81, F03.90, F03.91, F10.27, F10.97, F13.27, F13.97, F18.17, F18.27, F18.97, F19.17, F19.27, F19.97, G23.1, G30.0, G30.1, G30.8, G30.9, G31.01, G31.09, G31.83, G90.3

1. Yes
2. No

PERMCI (MH)

During the past year, did a physician/APN/PA or psychologist document that the patient has probable permanent cognitive impairment using a Clinical Reminder?

1. Yes
2. No

DEMSEV (MH)

Was the severity of dementia assessed during the past year using one of the following standardized tools?

1. Clinical Dementia Rating Scale (CDR)
2. Functional Assessment Staging Tool (FAST)
3. Global Deterioration Scale (GDS)
99. Severity of dementia was not assessed during the past year using one of the specified tools

COGSCOR2 (MH)

What was the outcome of the assessment of the severity of dementia assessment?

4. Score indicated mild dementia
5. Score indicated moderate to severe dementia
6. Score indicated no dementia
99. No score documented in the record or unable to determine outcome

INCSEVCI (MH)

During the timeframe from (computer display demsevd + 1 day to stdyend), did a physician/APN/PA or psychologist document in the record that the patient has moderate or severe cognitive impairment?

1. Yes
2. No

MODSEVCI (MH)

During the past year, did the clinician document in the record that the patient has moderate or severe cognitive impairment?

1. Yes
2. No

TOBSCRN18 (PI module)

During the past year, was the patient screened for tobacco use by an acceptable provider using the National Clinical Reminder for Tobacco Use?

1. Yes
2. No
98. Patient declined to answer National Clinical Reminder for Tobacco Use screening questions

