

### Document Links:

[CGPI Validation Module](#)
[CGPI PI Module](#)

### COHORT

16. AMI - Outpatient visit  
36. SCI Dx  
48. Female, age 20-69  
50. Random Sample  
51. Random Sample MH  
54. Frail/Elderly  
60. DM Outpatient  
61. Inpatient SC  
68. Contract CBOC

### FEFLAG (rcvd on pull list)

FE case flagged for CGPI review / scoring?  
0. No  
1. Yes

### OTHCARE (Validation)

Is there evidence in the medical record that within the past two years, the patient refused VHA Primary Care and is receiving ONLY his/her primary care in a non-VHA setting?  
1. yes  
2. no

### REVSTAT

REVIEW STATUS (not abstracted)  
0. Abstraction has not begun  
1. Abstraction in progress  
2. Abstraction completed w/o errors  
3. TVG failure (exclusion)  
4. Record contains missing required answers  
5. Administrative exclusion from all measures

### HOSPICE (PI module)

During the past year is there documentation in the medical record the patient is enrolled in a VHA or community-based hospice program?  
1. Yes  
2. No

### TERMILL (PI module)

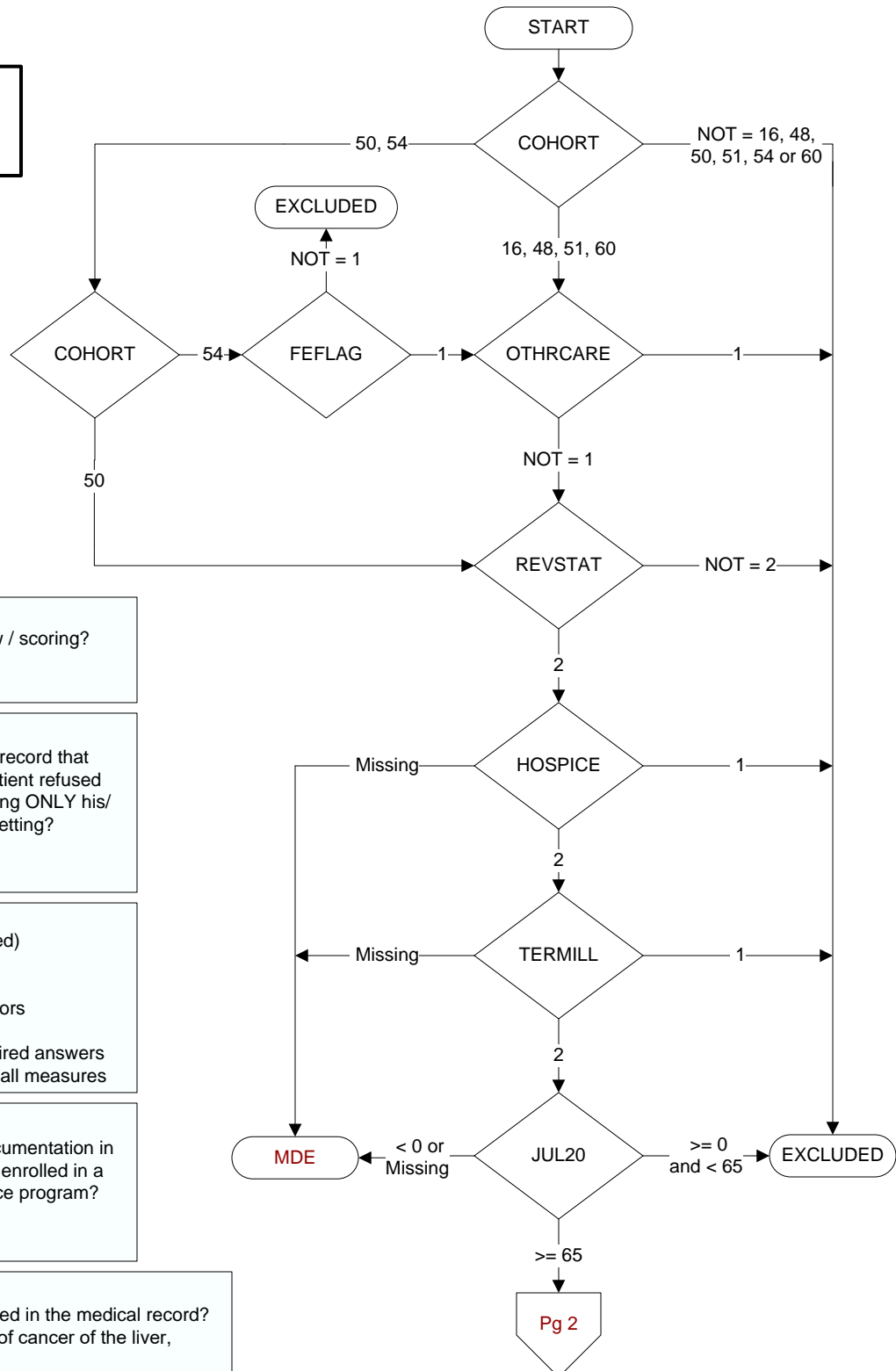
Is one of the following documented in the medical record?

- The patient has a diagnosis of cancer of the liver, pancreas, or esophagus
- On the problem list it is documented the patient's life expectancy is less than 6 months?

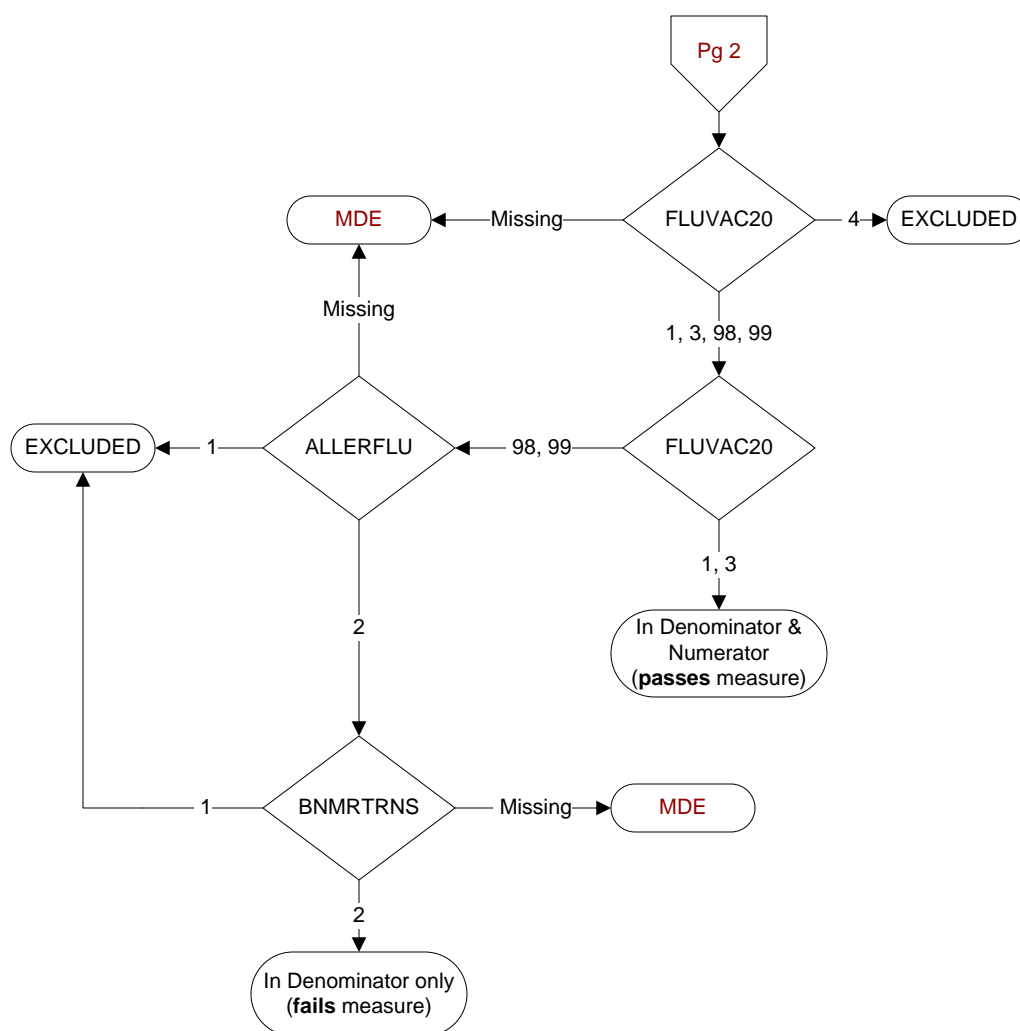
1. Yes  
2. No

### JUL20

Calculated field  
(07/01/20 - BIRTHDT).



**MDE = Missing or Invalid Data Exclusion (data error)**

**FLUVAC20** (PI Module)

During the period from (computer display 7/01/2020 to (pulldt or <= stdyend if stdyend > pulldt)), did the patient receive influenza vaccination?

- 1. received vaccination from VHA
- 3. received vaccination from private sector provider
- 4. patient's only visit during immunization period preceded availability of vaccine
- 98. patient refused vaccination
- 99. no documentation patient received vaccination

**ALLERFLU** (PI Module)

Is one of the following documented in the medical record?

- Previous severe allergic reaction to any component of the influenza vaccine, or after a previous dose of any influenza vaccine
- History of Guillain-Barre Syndrome

- 1. Yes
- 2. No

**BNMTRNS** (PI module)

Is there documentation in the medical record the patient had a bone marrow transplant during the past year?

- 1. Yes
- 2. No