

Document Links:

[CGPI Validation Module](#)

[CGPI PI Module](#)

[CGPI Core Module](#)

[CGPI CVD Module](#)

COHORT

16. AMI - Outpatient visit
36. SCI Dx
48. Female, age 20-69
50. Random Sample
51. Random Sample MH
54. Frail/Elderly
60. DM Outpatient
61. Inpatient SCI
68. Contract CBOC

OTHCARE (Validation)

Is there evidence in the medical record that within the past two years, the patient refused VHA Primary Care and is receiving ONLY his/her primary care in a non-VHA setting?

1. yes
2. no

REVSTAT

REVIEW STATUS (not abstracted)

0. Abstraction has not begun
1. Abstraction in progress
2. Abstraction completed w/o errors
3. TVG failure (exclusion)
4. Record contains missing required data
5. Administrative exclusion from all measures

HOSPICE (PI module)

During the past year is there documentation in the medical record the patient is enrolled in a VHA or community-based hospice program?

1. Yes
2. No

TERMILL (PI module)

Is one of the following documented in the medical record?

- The patient has a diagnosis of cancer of the liver, pancreas, or esophagus
- On the problem list it is documented the patient's life expectancy is less than 6 months?

1. Yes
2. No

Did the patient have one or more of the following active diagnoses? (Validation)

SELM 4 = Old Myocardial Infarction

-1 Yes
0 No

FEFLAG (rcvd on pull list)
FE case flagged for CGPI review / scoring?
0. No
1. Yes

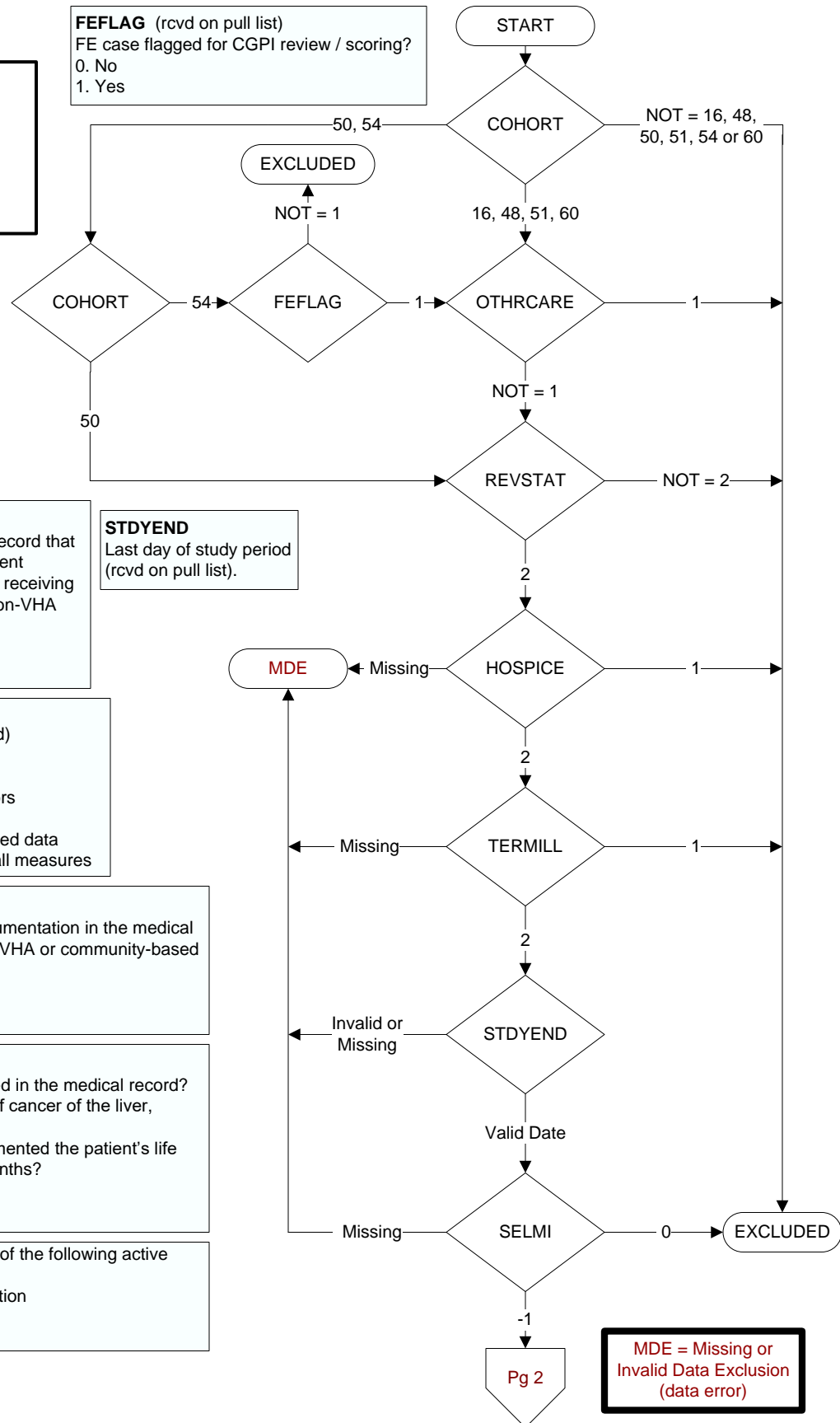
STDYEND
Last day of study period
(rcvd on pull list).

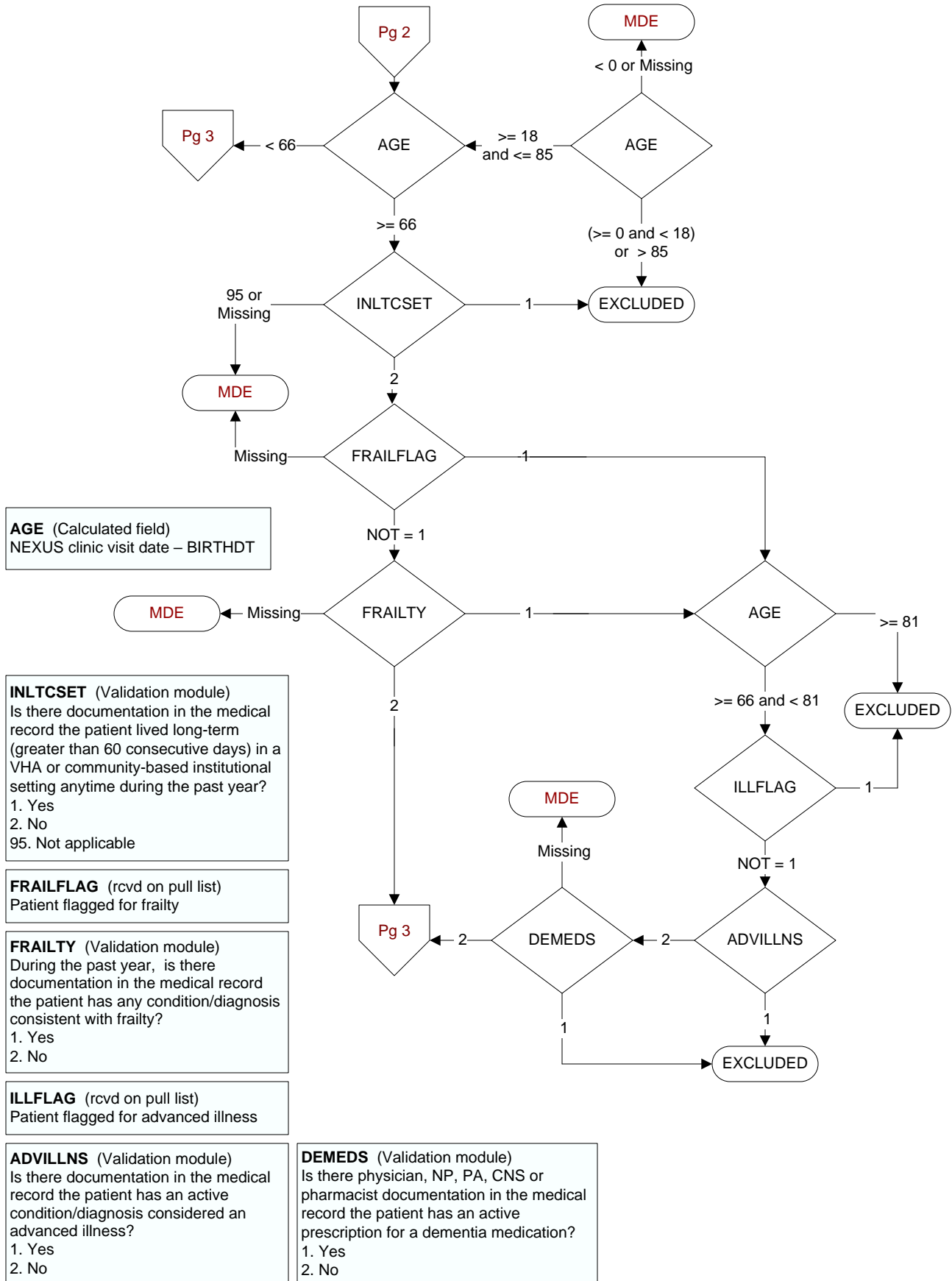
MDE ← Missing

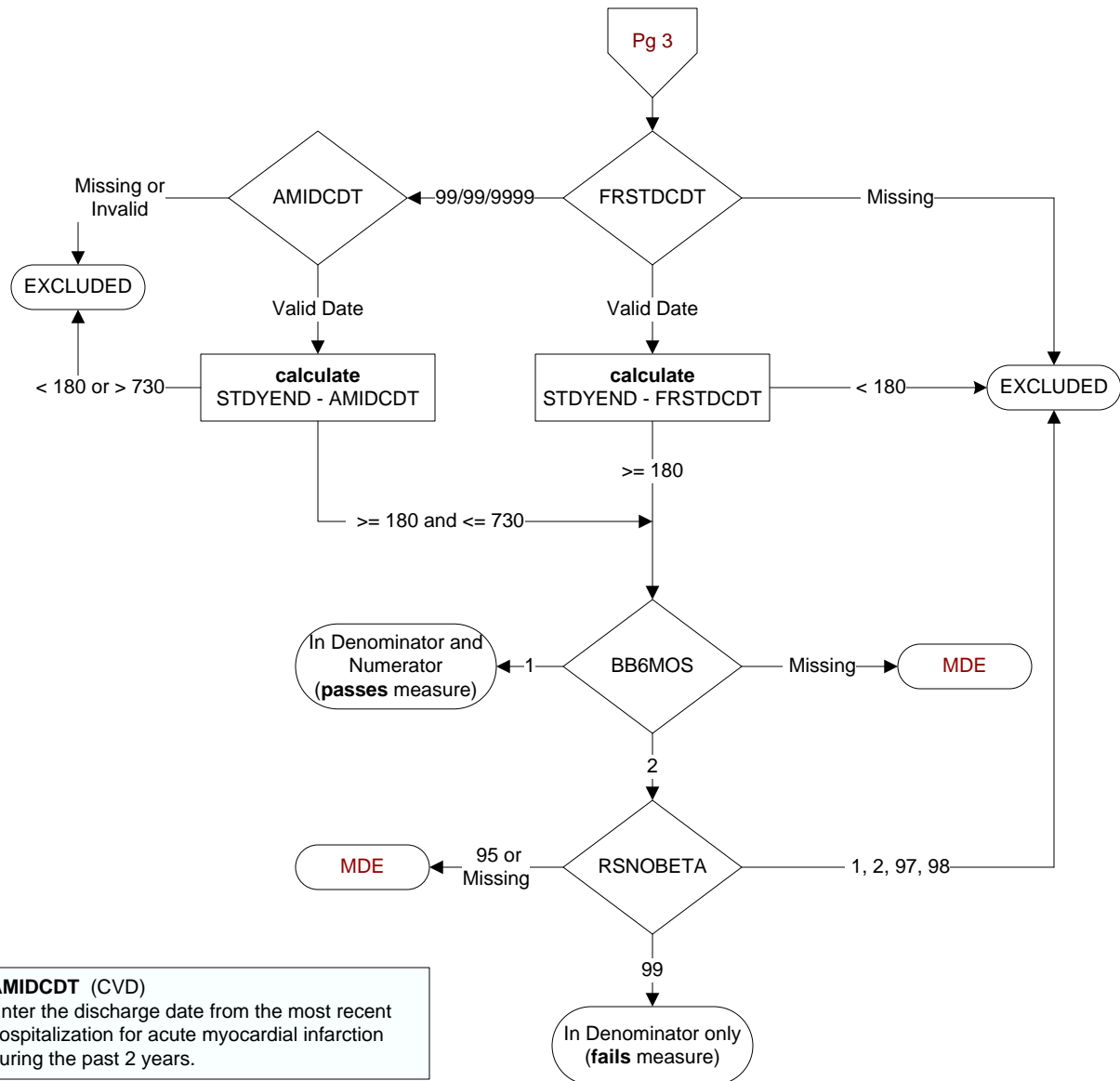
Invalid or Missing

Pg 2

MDE = Missing or Invalid Data Exclusion (data error)





**AMIDCDT (CVD)**

Enter the discharge date from the most recent hospitalization for acute myocardial infarction during the past 2 years.

FRSTDCDT (CVD)

Enter the date of the discharge associated with the first episode of AMI within the last 18 months.

BB6MOS (CVD)

Is there documentation in the medical record the patient was on a beta-blocker continuously during the timeframe from (computer to display most recent of amidcdt or frstdcdt + 179 days)?

Examples of beta-blockers include, but are not limited to:

- metoprolol succinate or tartrate
- carvedilol
- atenolol
- nadolol
- propranolol
- combination of beta-blockers with other drugs

1. Yes
2. No
95. Not applicable

RSNOBETA (CVD)

On (computer to display most recent of amidcdt or frstdcdt), does the record document any of the following reasons for not prescribing a beta-blocker?

1. Beta-blocker allergy
2. Bradycardia (heart rate less than 60 bpm)
95. Not applicable
97. Other reasons documented by a physician/APN/PA or pharmacist for not prescribing a beta-blocker
98. Patient refusal of beta-blockers documented by physician/APN/PA or pharmacist
99. No documented reason