

**Document Links:**[HBPC Instrument](#)**REVSTAT**

REVIEW STATUS (not abstracted)

0. Abstraction has not begun
1. Abstraction in progress
2. Abstraction completed w/o errors
3. Cohort validation failure (exclusion)
4. Record contains missing data
5. Administrative Exclusion

**COHORT**

69 – Home Based Primary Care

**HCSTATUS** (HBPC)

Counting from the most recent HBPC encounter within the study interval, enter the patient's status in regard to HBPC admission:

2. HBPC admission greater than or equal to 30 days but less than or equal to 1 year
3. HBPC admission greater than one year (>365 days from the admission date)

**INPTADM** (HBPC)

During the time frame from (computer display admisdt to admisdt + 30 days), did the record document the patient was hospitalized?

1. Yes
2. No

**HOSPICE**

During the past year is there documentation in the medical record the patient is enrolled in a VHA or community-based hospice program?

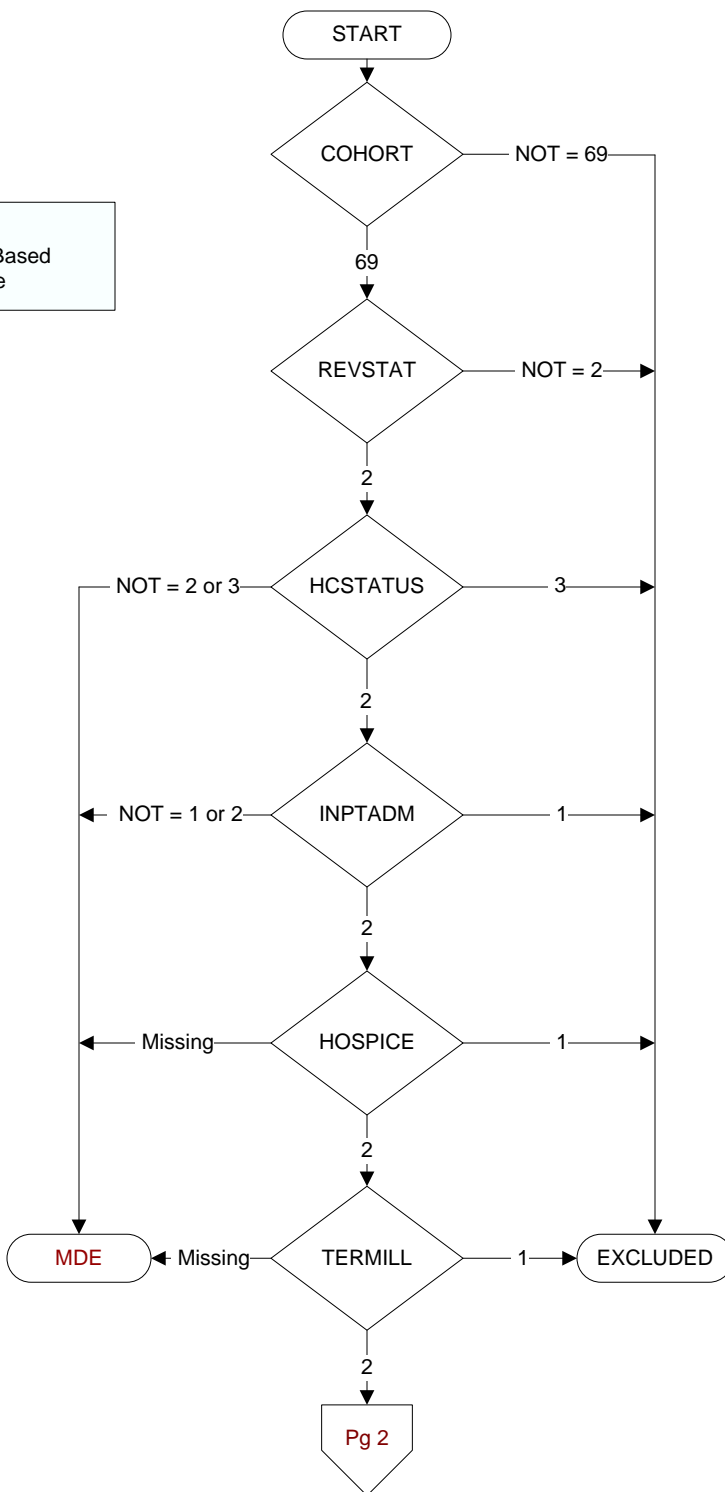
1. Yes
2. No

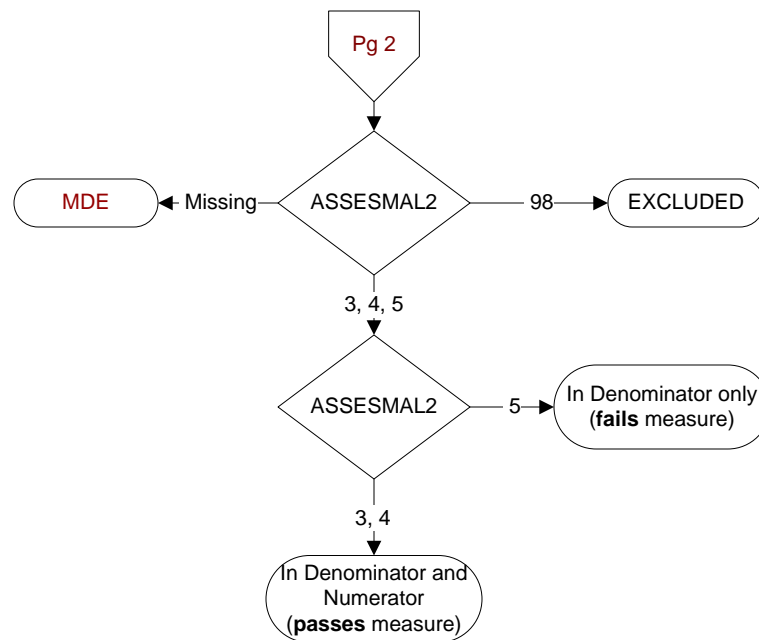
**TERMILL**Is one of the following documented in the medical record?

- The patient has a diagnosis of cancer of the liver, pancreas, or esophagus
- On the problem list it is documented the patient's life expectancy is less than 6 months?

1. Yes
2. No

**MDE = Missing or  
Invalid Data Exclusion  
(data error)**



**ASSESMAL2 (HBPC)**

During the timeframe from (computer display admisdt – 30 days to admisdt + 30 days), was an assessment for malnutrition completed by a Registered Dietitian (RD) or Registered Dietician Nutritionist (RDN) during the initial face-to-face or clinical video telehealth (CVT) encounter?

- 3. Yes, the HBPC RD or RDN initial nutrition assessment contains an assessment for malnutrition that was completed by a RD or RDN during the initial **face-to-face** encounter
- 4. Yes, the HBPC RD or RDN initial nutrition assessment contains an assessment for malnutrition that was completed by a RD or RDN during the initial **CVT** encounter
- 5. No, the HBPC RD or RDN initial nutrition assessment does not contain an assessment for malnutrition completed by a RD or RDN during a face-to-face or CVT encounter
- 98. No, an assessment for malnutrition was not completed by the HBPC RD or RDN and the initial nutrition assessment contains documentation that the patient/caregiver/guardian refused or declined to participate in the assessment for malnutrition