

Document Links:[CGPI PI Module](#)[CGPI MH Module](#)**COHORT**

16. AMI - Outpatient visit
 36. SCI Dx
 48. Female, age 20-69
 50. Random Sample
 51. Random Sample MH
 54. Frail/Elderly
 60. DM Outpatient
 61. Inpatient SCI
 68. Contract CBOC

REVSTAT

REVIEW STATUS (not abstracted)
 0. Abstraction has not begun
 1. Abstraction in progress
 2. Abstraction completed w/o errors
 3. TVG failure (exclusion)
 4. Record contains missing data
 5. Administrative exclusion from all measures

HOSPICE (PI module)

During the past year is there documentation in the medical record the patient is enrolled in a VHA or community-based hospice program?
 1. Yes
 2. No

TERMILL (PI module)

Is one of the following documented in the medical record?
 • The patient has a diagnosis of cancer of the liver, pancreas, or esophagus
 • On the problem list it is documented the patient's life expectancy is less than 6 months?
 1. Yes
 2. No

DEMENTDX2 (MH)

During the past year, does the record document a diagnosis of dementia/neurocognitive disorder as evidenced by one of the following ICD-10-CM diagnosis codes:

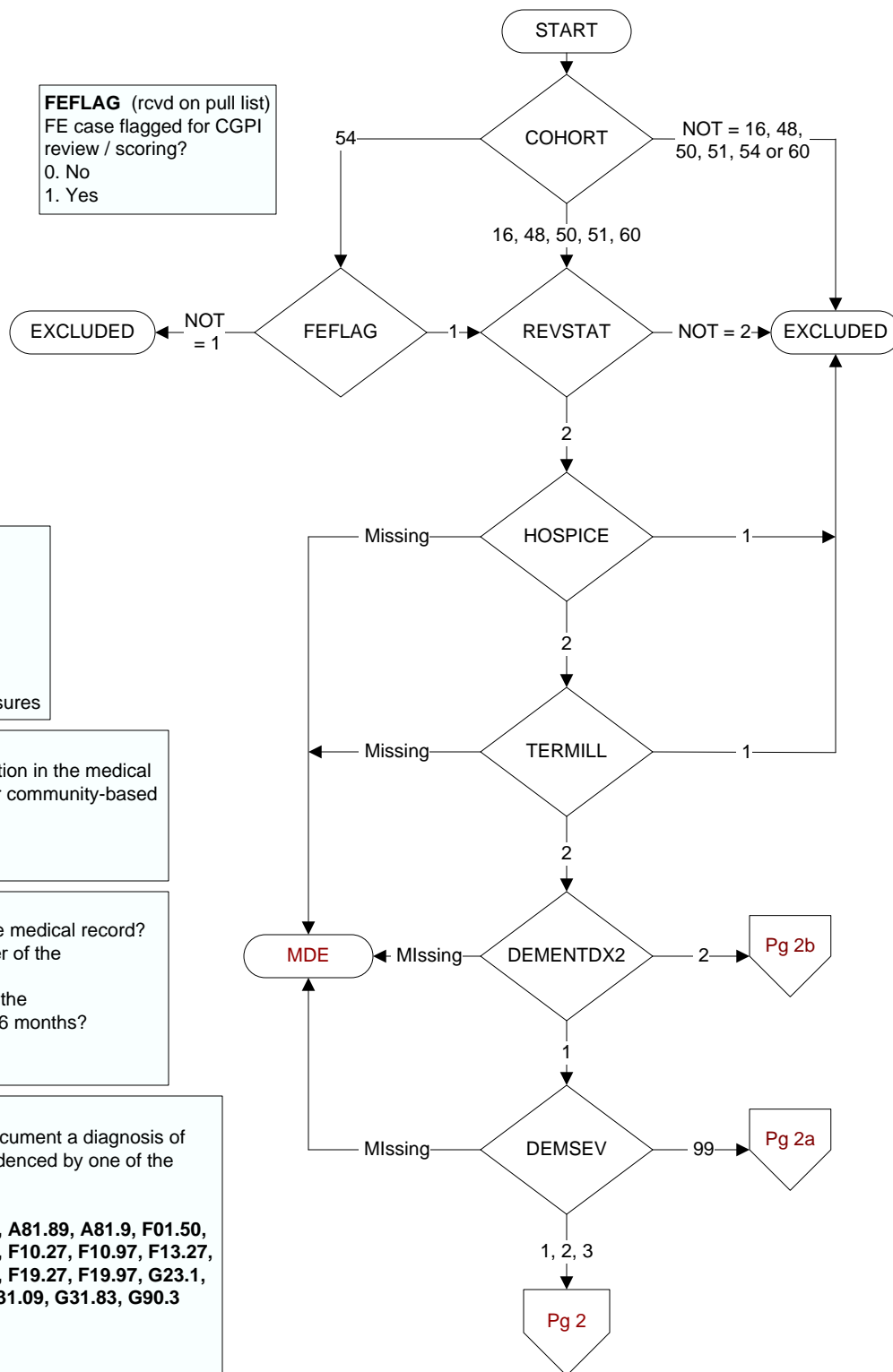
A81.00, A81.01, A81.09, A81.2, A81.82, A81.89, A81.9, F01.50, F01.51, F02.80, F02.81, F03.90, F03.91, F10.27, F10.97, F13.27, F13.97, F18.17, F18.27, F18.97, F19.17, F19.27, F19.97, G23.1, G30.0, G30.1, G30.8, G30.9, G31.01, G31.09, G31.83, G90.3

1. Yes
 2. No

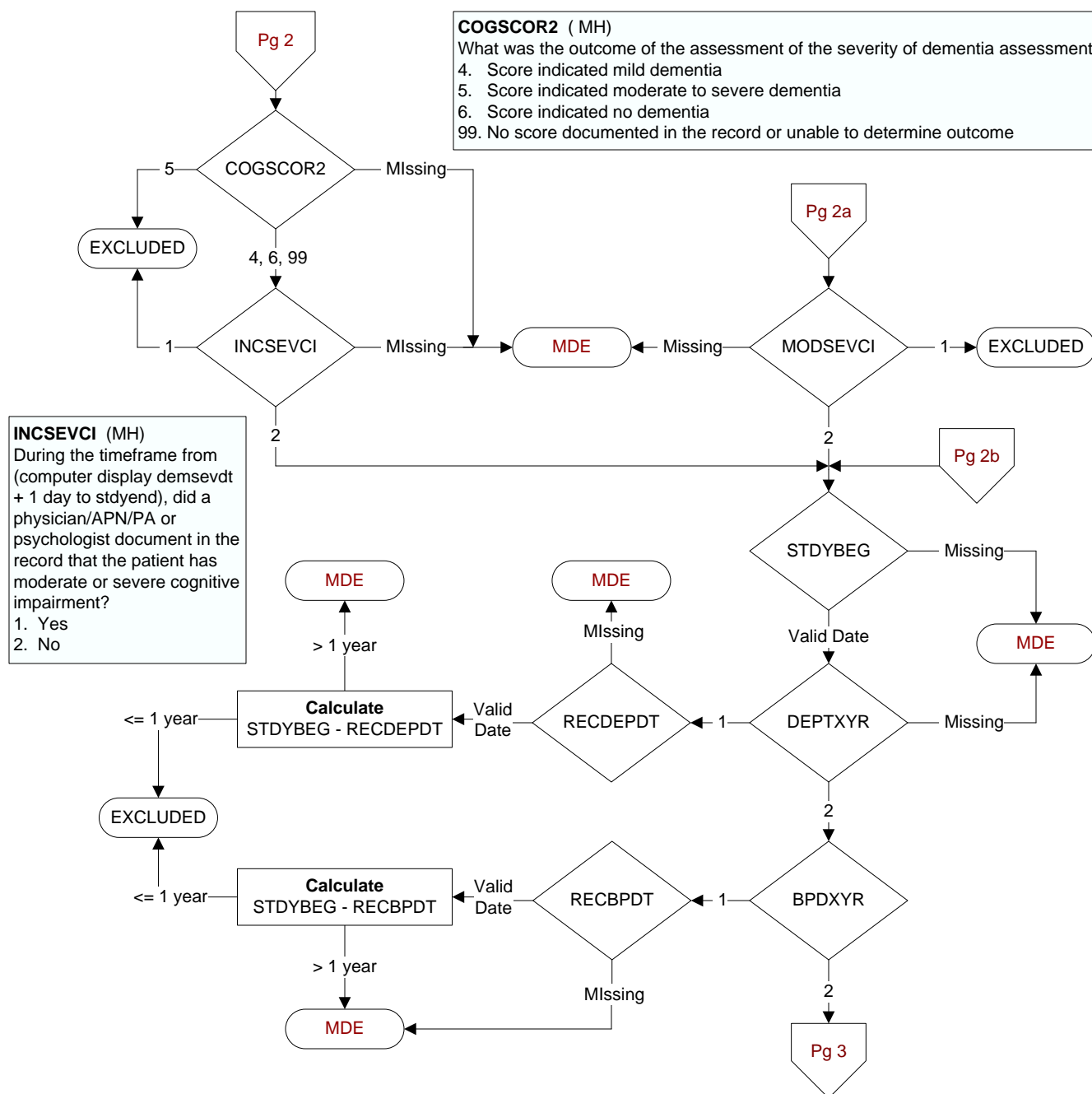
DEMSEV (MH)

Was the severity of dementia assessed during the past year using one of the following standardized tools?
 1. Clinical Dementia Rating Scale (CDR)
 2. Functional Assessment Staging Tool (FAST)
 3. Global Deterioration Scale (GDS)
 99. Severity of dementia was not assessed during the past year using one of the specified tools

FEFLAG (rcvd on pull list)
 FE case flagged for CGPI review / scoring?
 0. No
 1. Yes



**MDE = Missing or
 Invalid Data Exclusion
 (data error)**



SCRPHQI9 (MH)
During the past year was the patient screened for depression by the PHQ-2 + I9?
1. Yes
2. No
98. Patient refused depression screening

PHQI9DT (MH)
Enter the date within the past year of the most recent screening for depression by the PHQ-2 +I9.

SCRPHQ2 (MH)
During the past year was the patient screened for depression by the PHQ-2?
1. Yes
2. No
98. Patient refused depression screening by the PHQ-2

PHQ2DT (MH)
Enter the date of the most recent screening for depression by the PHQ-2.

PHQ1SCOR (MH)
Enter the score for PHQ-2 Question 1 documented in the record:
Over the past 2 weeks, have you been bothered by little interest or pleasure in doing things?
0. Not at all → 0
1. Several days → 1
2. More than half the days → 2
3. Nearly every day → 3
99. No answer documented

PHQ2SCOR (MH)
Enter the score for PHQ-2 Question 2 documented in the record:
Over the past 2 weeks, have you been bothered by feeling down, depressed, or hopeless?
0. Not at all → 0
1. Several days → 1
2. More than half the days → 2
3. Nearly every day → 3
99. No answer documented

PHQTOTAL (MH)
Enter the total score for the PHQ-2 questions documented in the medical record.

