

**Document Links:**[CGPI Validation Module](#)[CGPI PI Module](#)[CGPI Core Module](#)[CGPI CVD Module](#)**COHORT**

16. AMI - Outpatient visit  
 36. SCI Dx  
 48. Female, age 20-69  
 50. Random Sample  
 51. Random Sample MH  
 54. Frail/Elderly  
 60. DM Outpatient  
 61. Inpatient SCI  
 68. Contract CBOC

**OTHCARE** (Validation)

Is there evidence in the medical record that within the past two years, the patient refused VHA Primary Care and is receiving ONLY his/her primary care in a non-VHA setting?

1. yes  
 2. no

**REVSTAT**

REVIEW STATUS (not abstracted)

0. Abstraction has not begun  
 1. Abstraction in progress  
 2. Abstraction completed w/o errors  
 3. TVG failure (exclusion)  
 4. Record contains missing required data  
 5. Administrative exclusion from all measures

**HOSPICE** (PI module)

During the past year is there documentation in the medical record the patient is enrolled in a VHA or community-based hospice program?

1. Yes  
 2. No

**TERMILL** (PI module)Is one of the following documented in the medical record?

- The patient has a diagnosis of cancer of the liver, pancreas, or esophagus
- On the problem list it is documented the patient's life expectancy is less than 6 months?

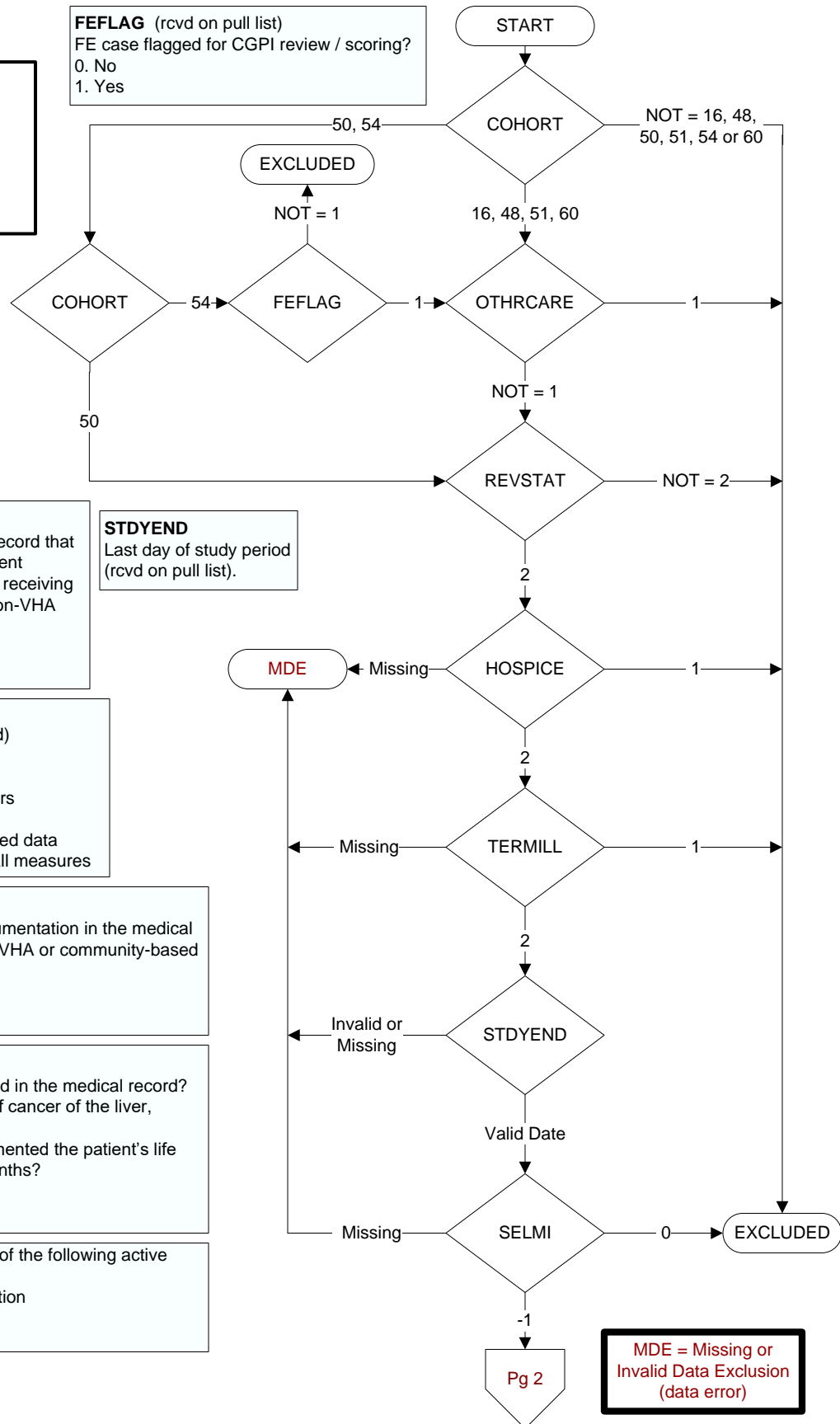
1. Yes  
 2. No

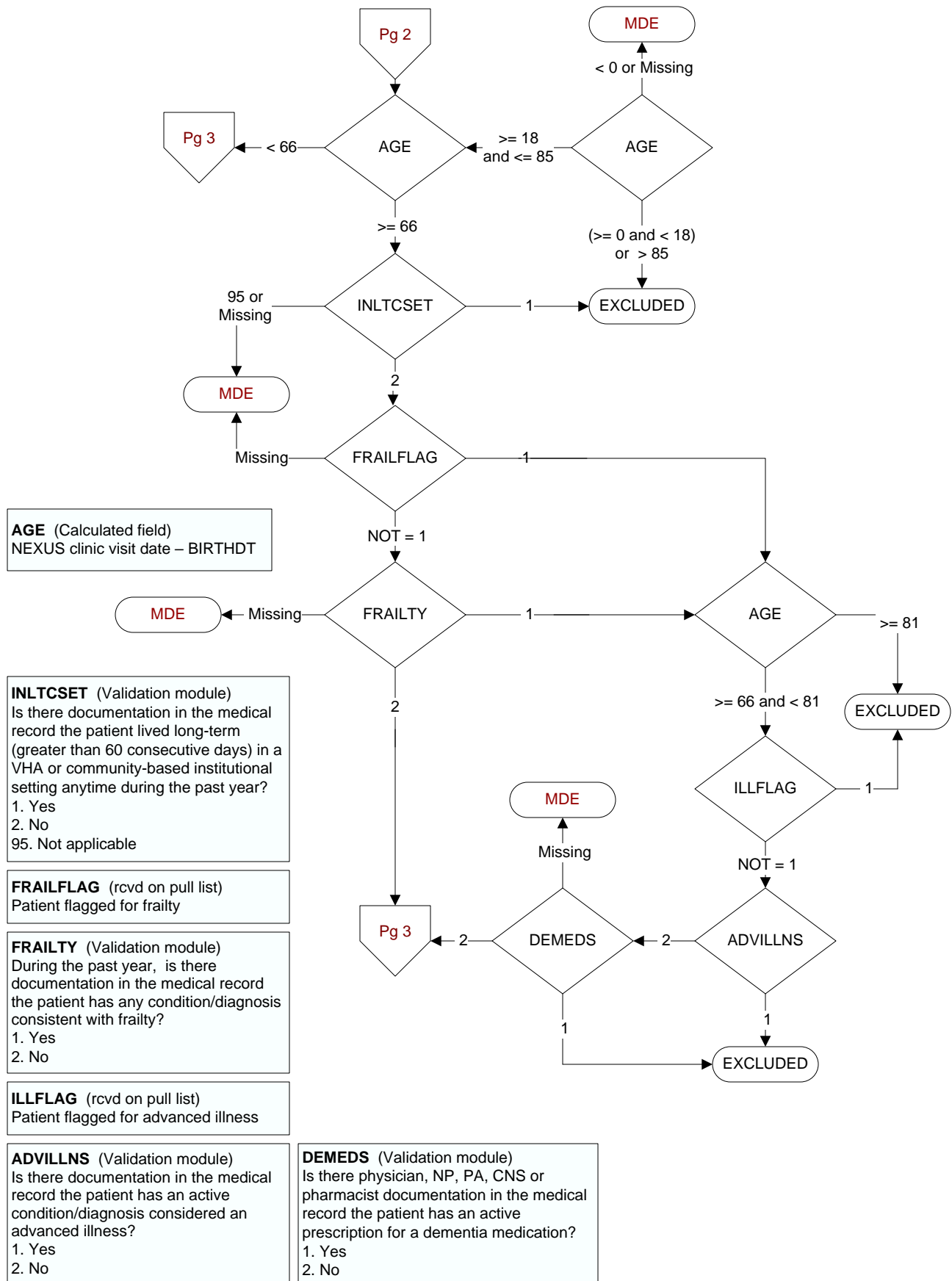
Did the patient have one or more of the following active diagnoses? (Validation)

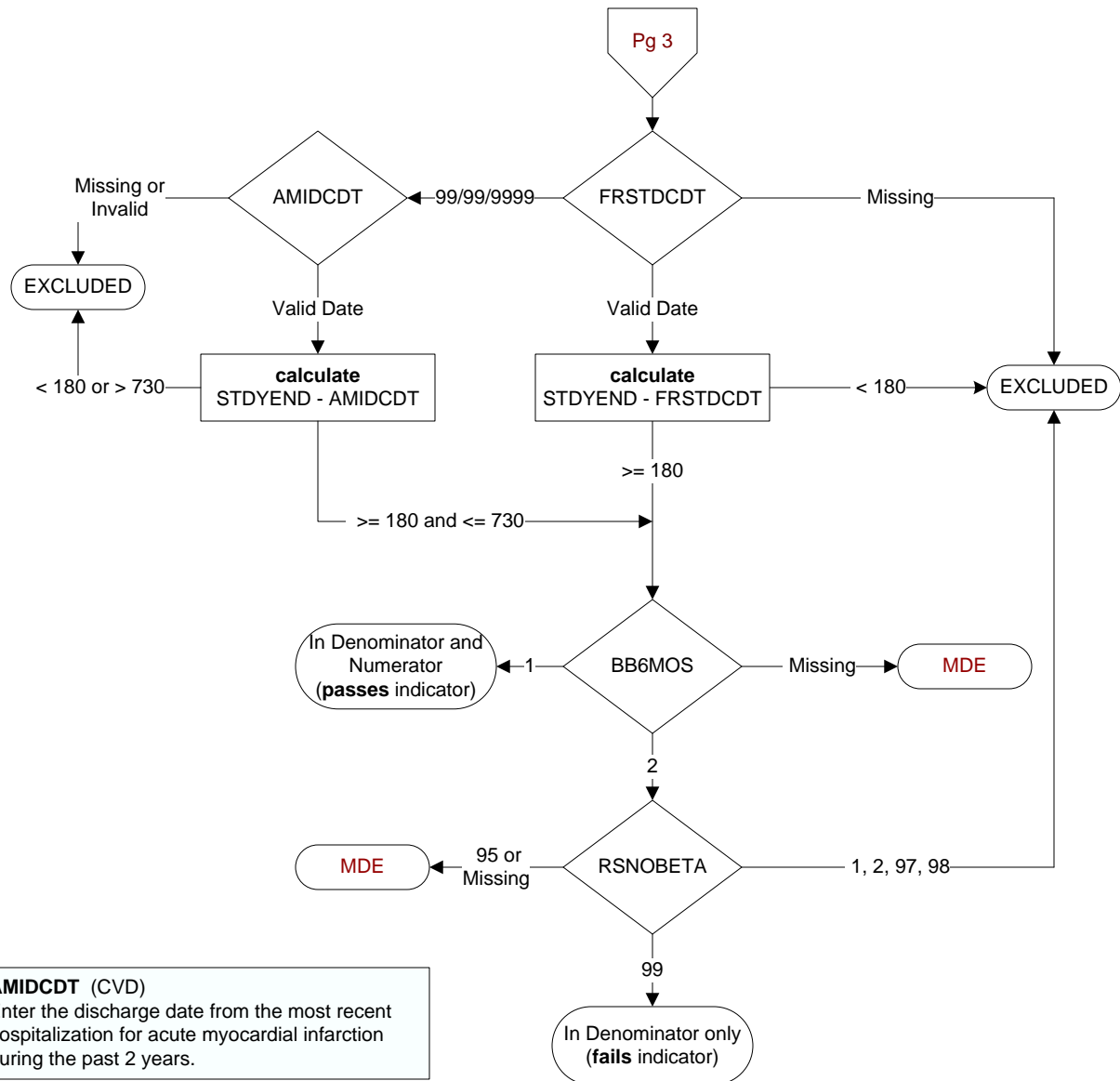
**SELM1** 4 = Old Myocardial Infarction

-1 Yes  
 0 No

**FEFLAG** (rcvd on pull list)  
 FE case flagged for CGPI review / scoring?  
 0. No  
 1. Yes





**AMIDCDT (CVD)**

Enter the discharge date from the most recent hospitalization for acute myocardial infarction during the past 2 years.

**FRSTDCDT (CVD)**

Enter the date of the discharge associated with the first episode of AMI within the last 18 months.

**BB6MOS (CVD)**

Is there documentation in the medical record the patient was on a beta-blocker continuously during the timeframe from (computer to display most recent of amidcdt or frstdcdt + 179 days)?

Examples of beta-blockers include, but are not limited to:

- metoprolol succinate or tartrate
- carvedilol
- atenolol
- nadolol
- propranolol
- combination of beta-blockers with other drugs

1. Yes
2. No
95. Not applicable

**RSNOBETA (CVD)**

On (computer to display most recent of amidcdt or frstdcdt), does the record document any of the following reasons for not prescribing a beta-blocker?

1. Beta-blocker allergy
2. Bradycardia (heart rate less than 60 bpm)
95. Not applicable
97. Other reasons documented by a physician/APN/PA or pharmacist for not prescribing a beta-blocker
98. Patient refusal of beta-blockers documented by physician/APN/PA or pharmacist
99. No documented reason