

Document Links:[HBPC Instrument](#)**COHORT**

69 – Home Based Primary Care

REVSTAT

REVIEW STATUS (not abstracted)

0. Abstraction has not begun
1. Abstraction in progress
2. Abstraction completed w/o errors
3. TVG failure (exclusion)
4. Record contains missing data
5. Administrative exclusion from all measures

HOSPICE

During the past year is there documentation in the medical record the patient is enrolled in a VHA or community-based hospice program?

1. Yes
2. No

TERMILLIs one of the following documented in the medical record?

- The patient has a diagnosis of cancer of the liver, pancreas, or esophagus
- On the problem list it is documented the patient's life expectancy is less than 6 months?

1. Yes
2. No

DEMENTDX2

During the past year, does the record document a diagnosis of dementia/neurocognitive disorder as evidenced by one of the following ICD-10-CM diagnosis codes:

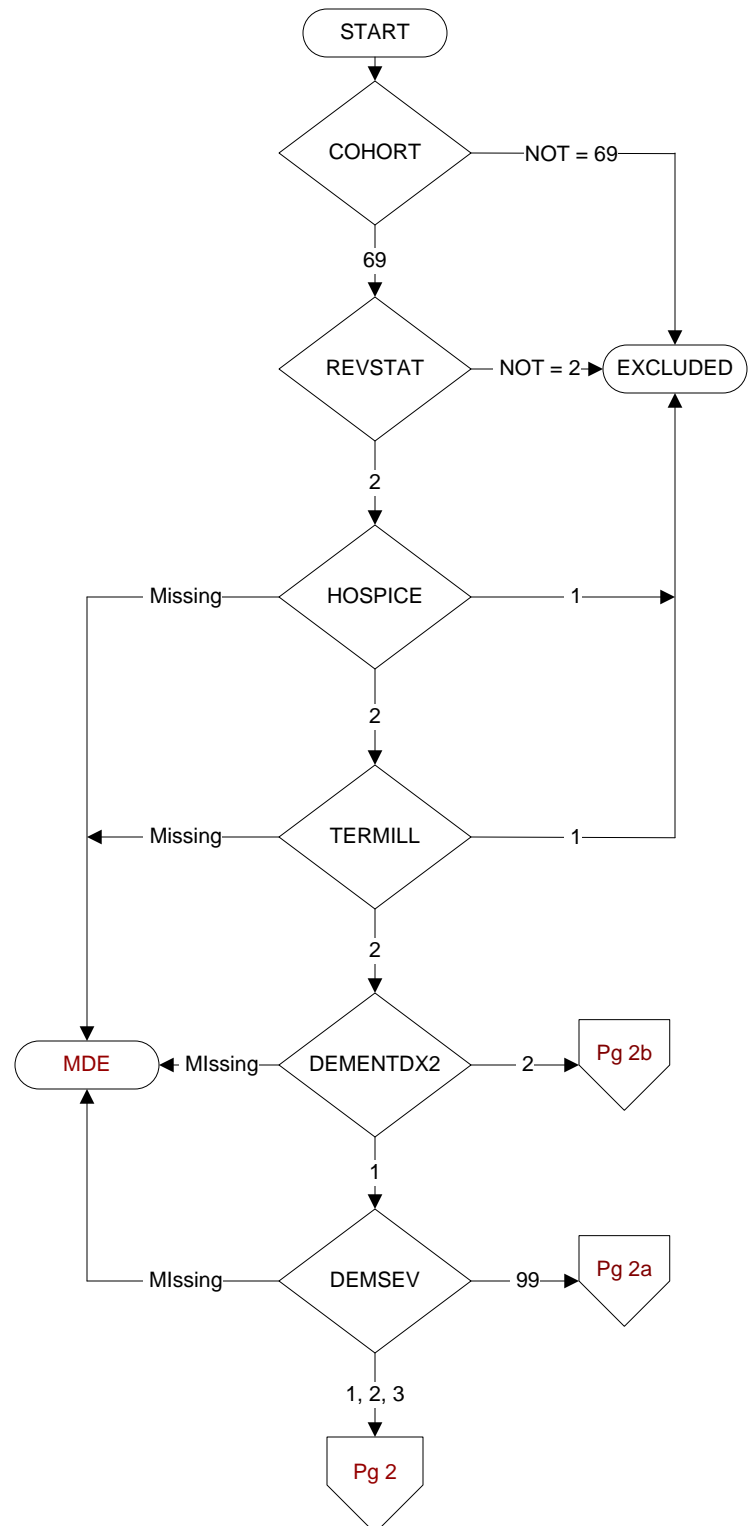
A81.00, A81.01, A81.09, A81.2, A81.82, A81.89, A81.9, F01.50, F01.51, F02.80, F02.81, F03.90, F03.91, F10.27, F10.97, F13.27, F13.97, F18.17, F18.27, F18.97, F19.17, F19.27, F19.97, G23.1, G30.0, G30.1, G30.8, G30.9, G31.01, G31.09, G31.83, G90.3

1. Yes
2. No

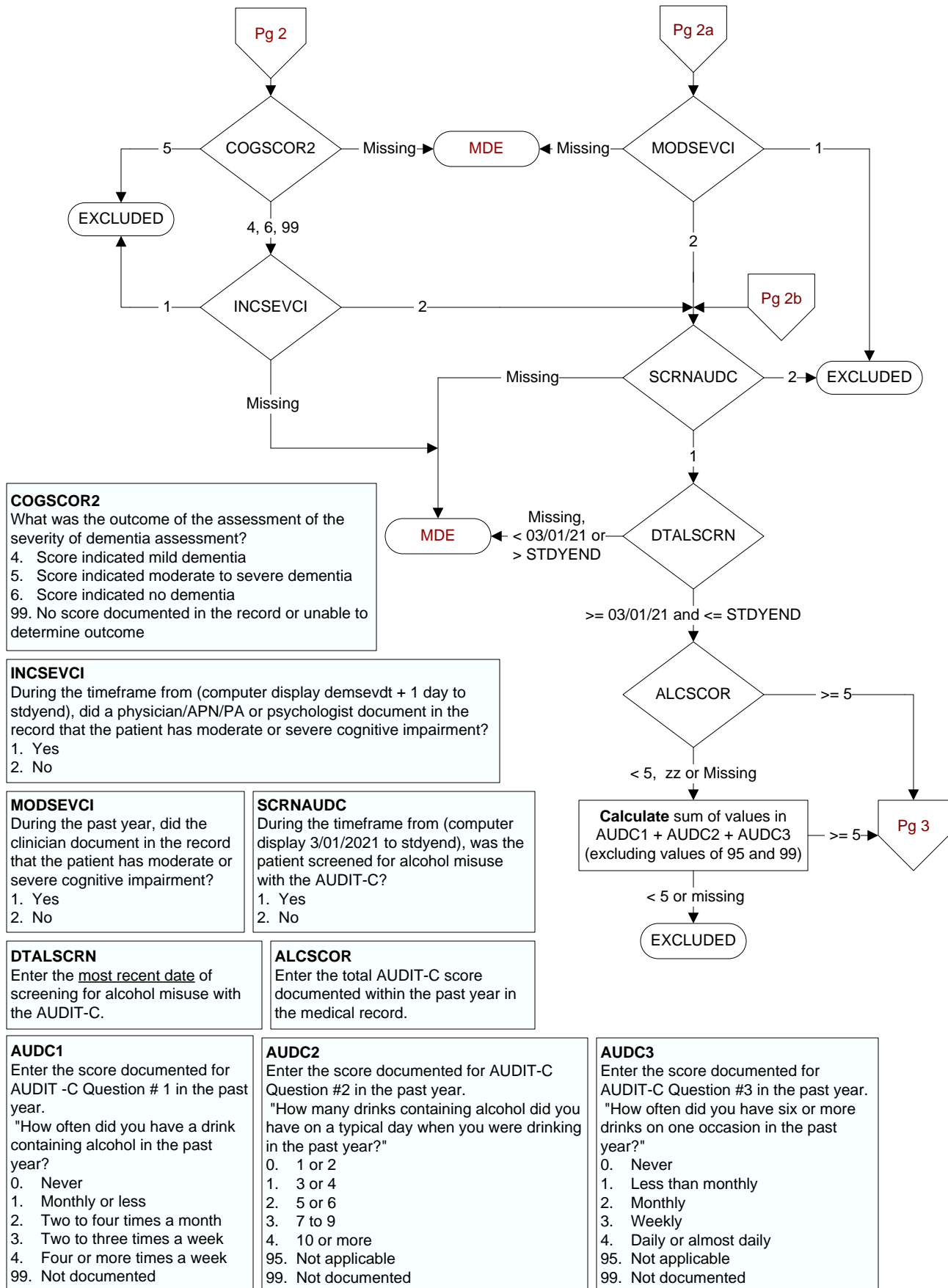
DEMSEV

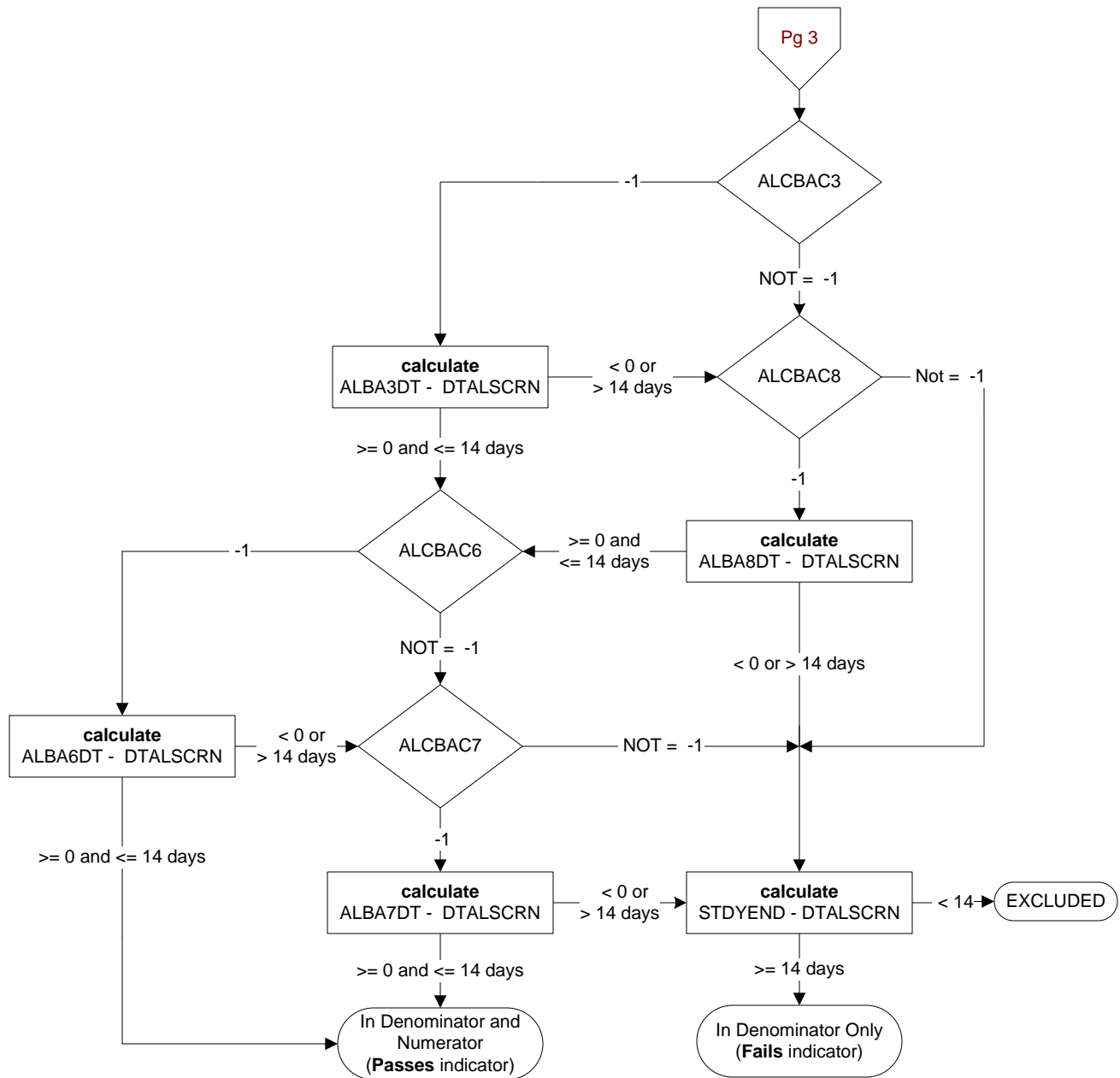
Was the severity of dementia assessed during the past year using one of the following standardized tools?

1. Clinical Dementia Rating Scale (CDR)
2. Functional Assessment Staging Tool (FAST)
3. Global Deterioration Scale (GDS)
99. Severity of dementia was not assessed during the past year using one of the specified tools



**MDE = Missing or
Invalid Data Exclusion
(data error)**





During the timeframe from (Computer to enter DTALSCRN to DTALSCRN +14 days), does the record document any of the following components of brief alcohol intervention/counseling for past-year drinkers?

Indicate all that apply and the date brief alcohol intervention/counseling was noted in the record:

ALCBAC3. Advised/informed patient to abstain

ALBA3DT = Date of ALCBAC3

ALCBAC6. Personalized feedback regarding relationship of alcohol to the patient's specific health issues

ALBA6DT = Date of ALCBAC6

ALCBAC7. General alcohol-related intervention/counseling (not linked to patient's issues)

ALBA7DT = Date of ALCBAC7

ALCBAC8. Explicitly advised/informed patient to drink within recommended limits

ALBA8DT = Date of ALCBAC8

ALCBA95. Not applicable

ALCBA99. No alcohol intervention/counseling documented

-1 = Yes

0 = No