

Document Links:[Transition of Care Instrument](#)**REVSTAT**

REVIEW STATUS (not abstracted)

0. Abstraction has not begun
1. Abstraction in progress
2. Abstraction completed w/o errors
3. TVG failure (exclusion)
4. Record contains missing required answers
5. Administrative Exclusion

AGE (calculated field)

Patient age on 12/31/20

DOCHOSPCE

At any time during the year prior to [(If readm = 2 computer to display admdt) through (computer to display dcdt)] OR [(if readm = 1, computer to display readmdt) through (computer to display stdyend)] is one of the following documented in the medical record?

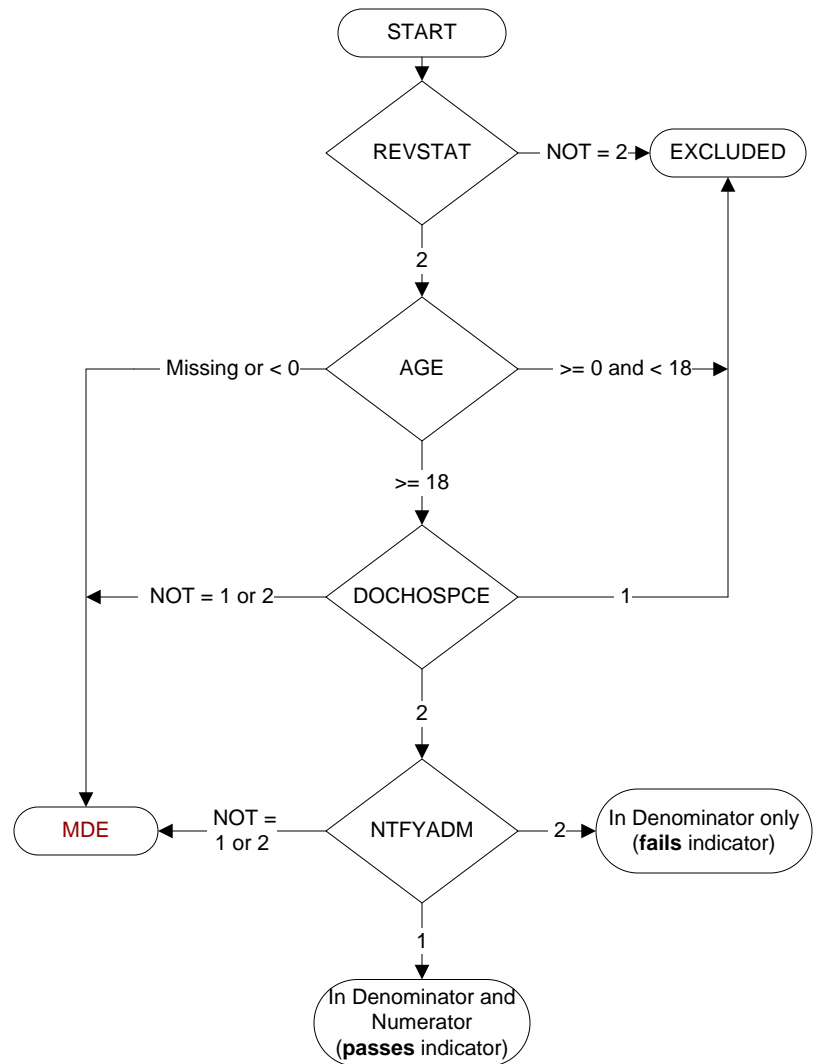
- The patient is enrolled in a VHA or community-based Hospice program
- The patient has a diagnosis of cancer of the liver, pancreas, or esophagus
- On the problem list it is documented the patient's life expectancy is less than 6 months?

1. Yes
2. No

NTFYADM

For the inpatient admission on (computer to display admdt), is there documentation in the medical record of receipt of notification to the PCP or ongoing provider of the inpatient admission on the day of admission through 2 days after the admission (3 total days)?

1. Yes
2. No



**MDE = Missing or
Invalid Data Exclusion
(data error)**