**Document Links:**
[Global Measures Instrument](#)

COHORT (rcvd on pull list)
70 = Global Measures

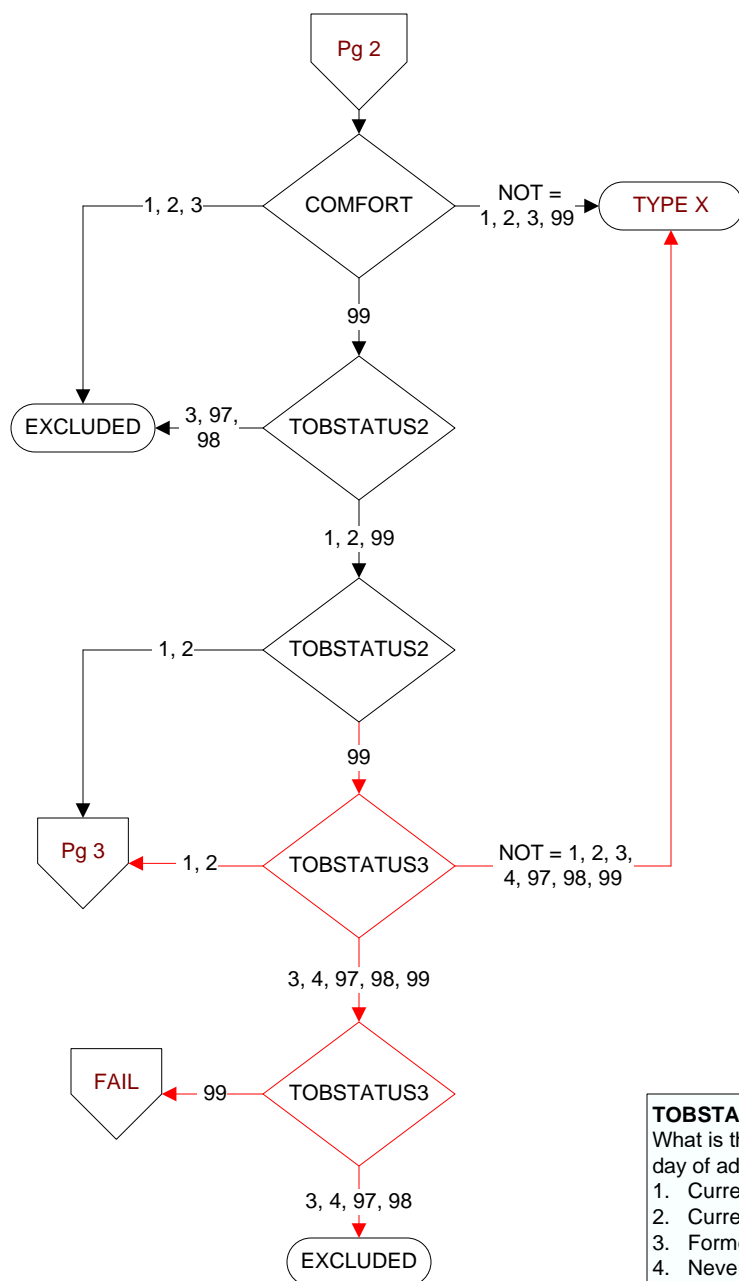
REVSTAT
REVIEW STATUS (calculated)
0. Abstraction has not begun
1. Abstraction in progress
2. Abstraction completed w/o errors
3. TVG failure (exclusion)
4. Record contains missing data
5. Administrative Exclusion

DCDT (Global Measures)
Discharge date (rcvd on pull list and may not be modified)

ADMDT (Global Measures)
Admission date:

BIRTHDT (Global Measures)
Patient date of birth

AGE (Calculated)
ADMDT - BIRTHDT

**COMFORT** (Global Measures)

When is the earliest physician, APN, or PA documentation of comfort measures only?

1. Day of arrival (day 0) or day after arrival (day 1)
2. Two or more days after arrival (day 2 or greater)
3. Comfort measures only documented during hospital stay, but timing unclear
99. Comfort measures only was not documented by the physician/APN/PA or unable to determine

TOBSTATUS3 (Global Measures)

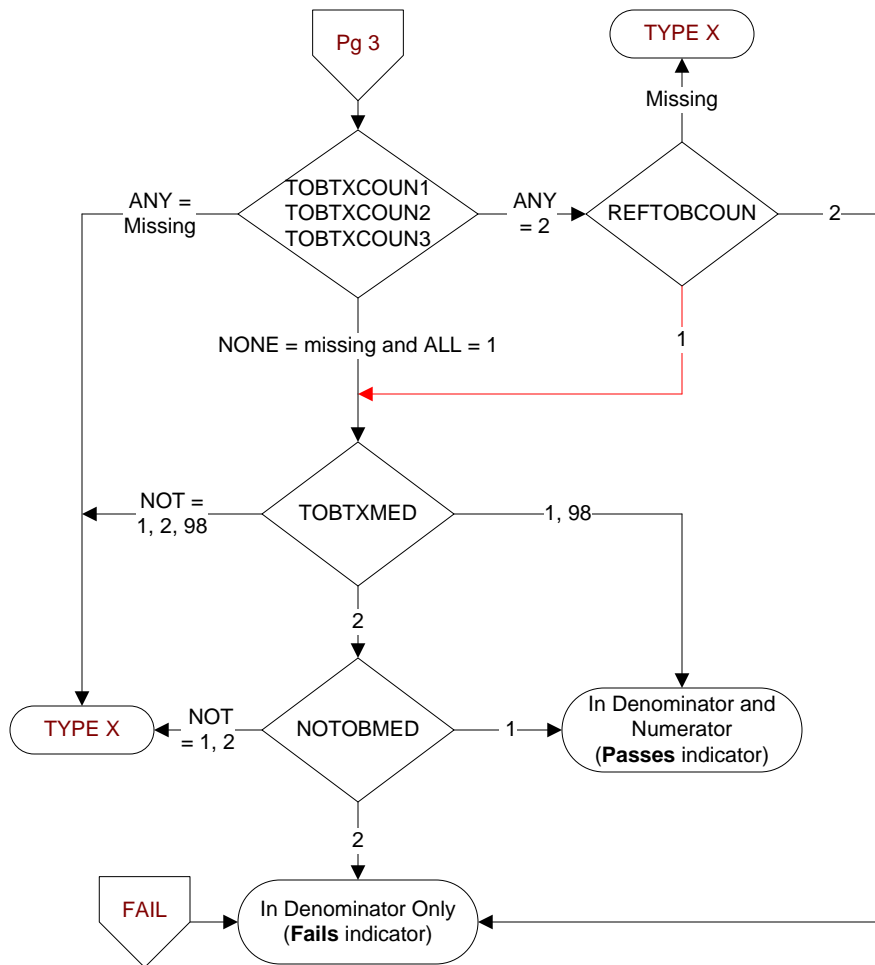
What is the patient's tobacco use status documented within the first day of admission **(by the end of Day1)**?

1. Current everyday tobacco user
2. Current some day tobacco user
3. Former tobacco user
4. Never tobacco user
97. The patient was not screened for tobacco use within the first day of admission (by end of Day 1) because of cognitive impairment
98. The patient refused the tobacco use screen
99. Tobacco use status unknown

TOBSTATUS2 (Global Measures)

What is the patient's tobacco use status documented within the first day of admission **(by the end of Day1)**?

1. The patient has smoked cigarettes daily on average in a volume of five or more cigarettes ($\geq \frac{1}{4}$ pack) per day AND/OR cigars daily AND/OR pipes daily during the past 30 days
2. The patient has smoked cigarettes daily on average in a volume of four or less cigarettes ($< \frac{1}{4}$ pack) per day AND/OR used smokeless tobacco AND/OR smoked cigarettes but not daily AND/OR cigars but not daily AND/OR pipes but not daily during the past 30 days
3. The patient has not used any forms of tobacco in the past 30 days
97. The patient was not screened for tobacco use during the first day of admission **(by the end of Day1)** because of cognitive impairment
98. The patient refused the tobacco use screen
99. The patient was not screened for tobacco use during the past 30 days with the Tobacco/Nicotine screen using the questions above within the first day of admission **(by the end of Day1)** or unable to determine the patient's tobacco use status from medical record documentation

**(Global Measures)**

Did the patient receive practical counseling that included all of the following components during the hospital stay?

Component

TOBTXCOUN1: Recognizing danger situations

1. Yes 2. No

TOBTXCOUN2: Developing coping skills

1. Yes 2. No

TOBTXCOUN3: Providing basic information about quitting

1. Yes 2. No

REFTOBCOUN (Global Measures)

Is there documentation that the patient refused/declined practical counseling for tobacco cessation during the hospital stay?

1. Yes

2. No

NOTOBMED (Global Measures)

Is there documentation of a reason for not administering one of the FDA-approved tobacco cessation medications during the hospital stay?

- Allergy to all of the FDA-approved tobacco cessation medications.
- Drug interaction (for all of the FDA-approved medications) with other drugs the patient is currently taking.
- Patient is pregnant
- Other reasons documented by physician/APN/PA or pharmacist.

1. Yes

2. No

TOBTXMED (Global Measures)

Did the patient receive one of the FDA-approved tobacco cessation medications during the hospital stay?

1. Yes

2. No

98. Patient refused FDA-approved tobacco cessation medications during the hospital stay