

Document Links:[Sepsis Instrument](#)**REVSTAT**

REVIEW STATUS (not abstracted)

0. Abstraction has not begun
1. Abstraction in progress
2. Abstraction completed w/o errors
3. TVG failure (exclusion)
4. Record contains missing data or errors
5. Administrative exclusion from all measures

AGE

Calculated field – ADMDT - BIRTHDT

DCDT

Discharge date

ADMDT

Admission date

TRNSFR

Is there documentation the patient was received as a transfer from an inpatient, outpatient or emergency/ observation department of an outside hospital or from an ambulatory surgery center?

1. Yes
2. No

CLNTRIAL

During this hospital stay, was the patient enrolled in a clinical trial in which patients with sepsis/septic shock were being studied?

1. Yes
2. No

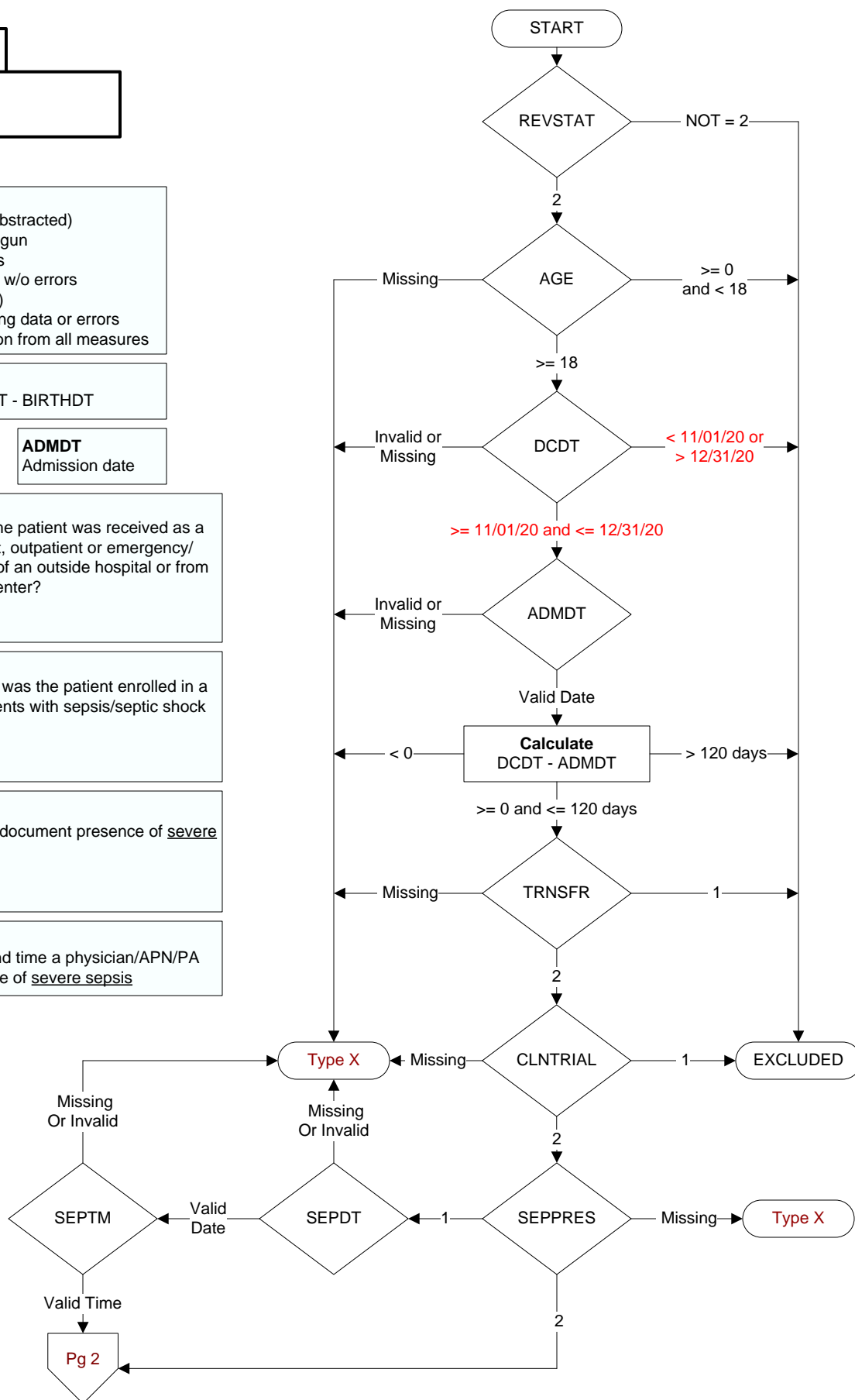
SEPPRES

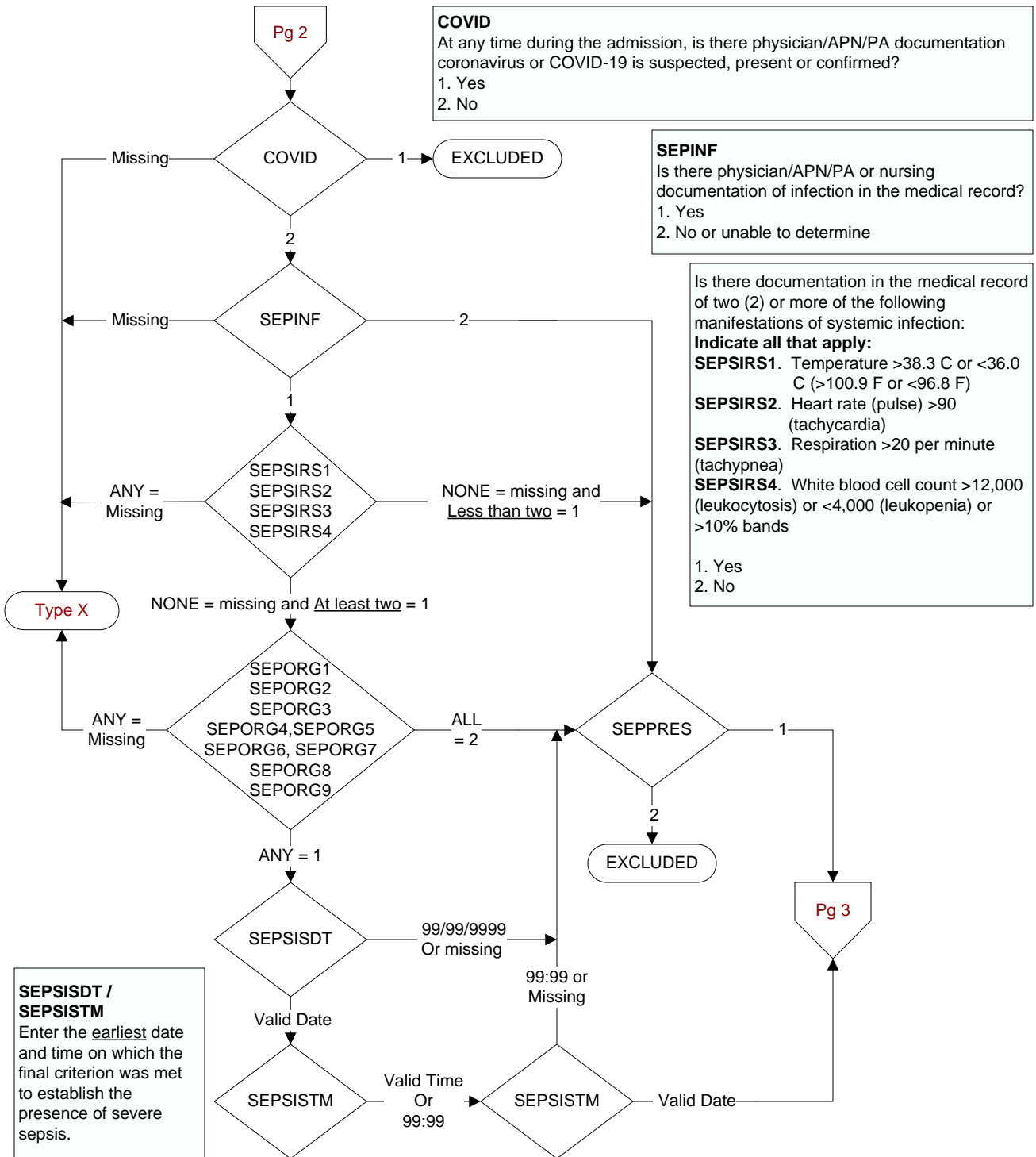
Did a physician/APN/PA document presence of severe sepsis?

1. Yes
2. No

SEPDT / SEPTM

Enter the earliest date and time a physician/APN/PA documented the presence of severe sepsis





Is there documentation of organ dysfunction in the medical record?

Indicate all that apply:

SEPORG1. Systolic blood pressure (SBP) < 90 mmHg or mean arterial pressure (MAP) < 65 mmHg

SEPORG2. Systolic blood pressure (SBP) decrease of more than 40 mmHg (see definitions/decision (D/D) rules)

SEPORG3. Acute respiratory failure as evidenced by a new need for invasive or non-invasive mechanical ventilation (see D/D rules)

SEPORG4. Creatinine > 2.0 (see D/D rules)

SEPORG5. Urine output < 0.5mL/kg/hour for 2 consecutive hours (see D/D rules)

SEPORG6. Total bilirubin > 2 mg/dL (34.2 mmol/L)

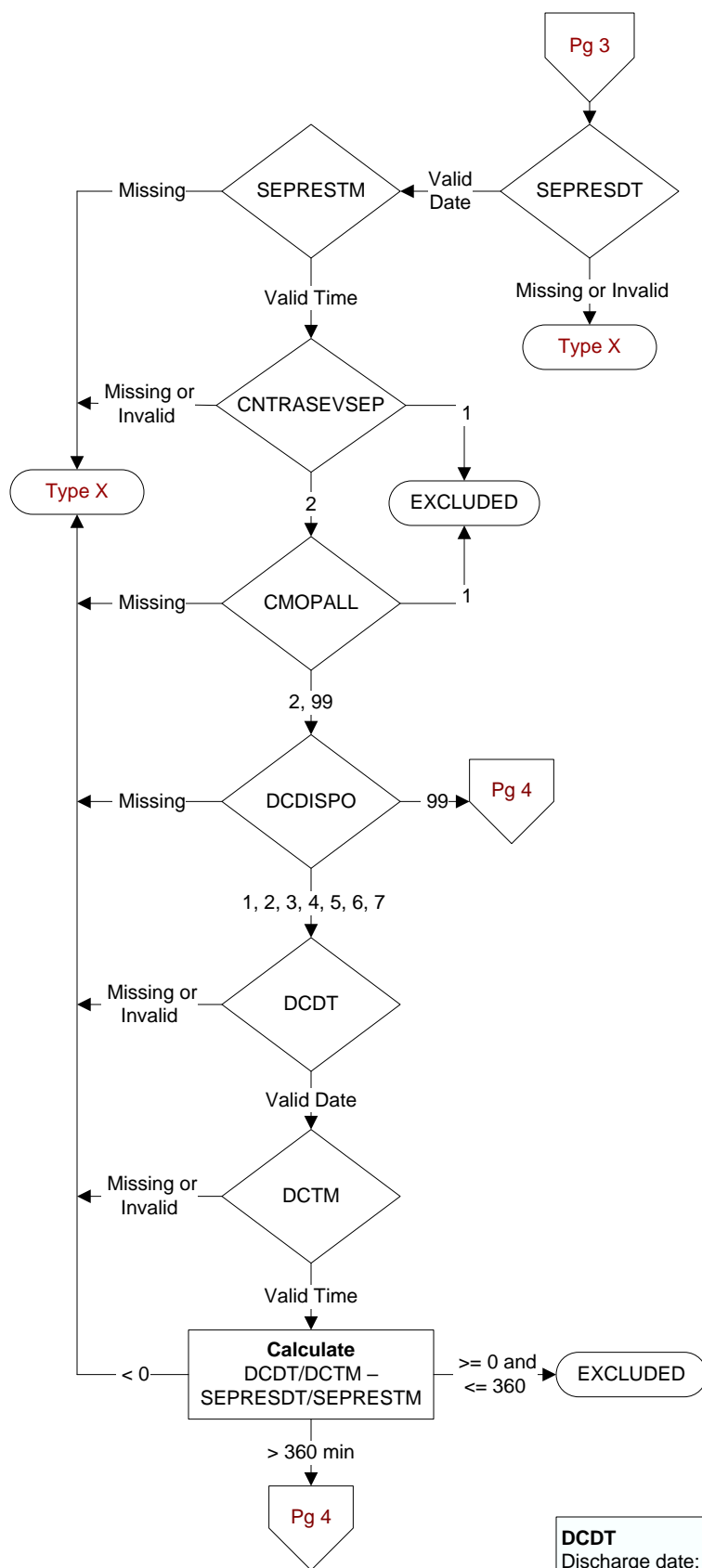
SEPORG7. Platelet count < 100,000

SEPORG8. INR > 1.5 or aPTT > 60 seconds (see D/D rules)

SEPORG9. Lactate > 18.0 mg/dL (>2 mmol/L)

1. Yes

2. No

**SEPRESDT**

Computer to auto-fill earliest valid date entered in sepdt or sepsisd.

SEPRESTM

Computer to auto-fill earliest valid time entered in septm or sepsistm.

CNTRASEVSEP

During the timeframe from (computer to display sepresdt/sepsestm - 6 hours) to (computer to display sepresdt/sepsestm + 6 hours) is there physician/APN/PA or nursing documentation that the patient or authorized patient advocate refused either a blood draw, IV fluid administration, or IV antibiotic administration?

1. Yes
2. No or unable to determine

CMOPALL

During the timeframe from (computer to display sepresdt/sepsestm - 6 hours) to (computer to display sepresdt/sepsestm + 6 hours) is there physician/APN/PA documentation of comfort measures only or palliative care?

1. Yes
2. No
99. Not documented or time is unclear

DCDISPO

What was the patient's discharge disposition on the day of discharge?

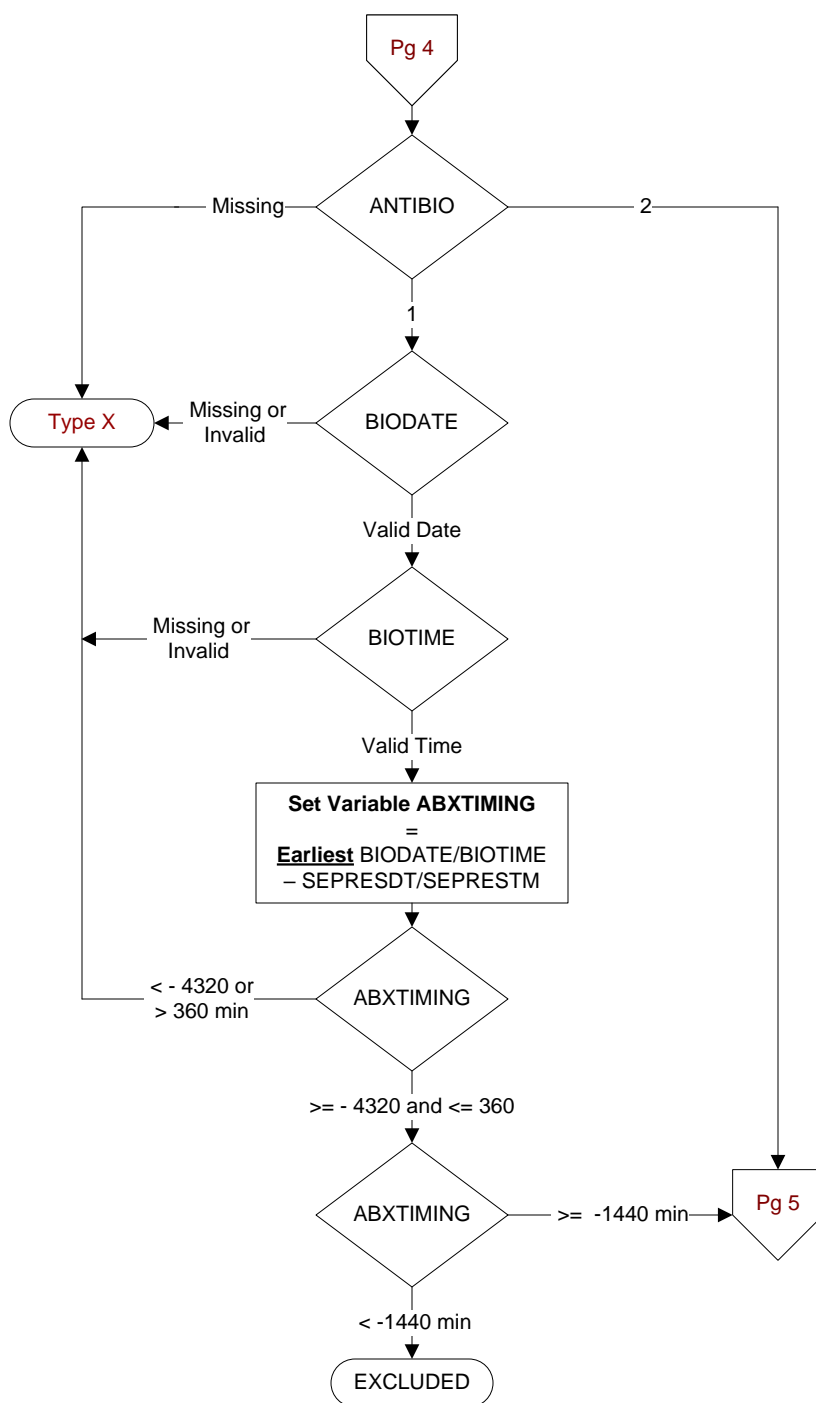
1. Home
 - Assisted Living Facilities (ALFs) – includes assisted living care at nursing home/facility
 - Court/Law Enforcement – includes detention facilities, jails, and prison
 - Home – includes board and care, domiciliary, foster or residential care, group or personal care homes, retirement communities, and homeless shelters
 - Home with Home Health Services
 - Outpatient Services including outpatient procedures at another hospital, outpatient Chemical Dependency Programs and Partial Hospitalization
2. Hospice – Home (or other home setting as listed in #1 (above))
3. Hospice – Health Care Facility
 - General Inpatient and Respite, Residential and Skilled Facilities, and Other Health Care Facilities
4. Acute Care Facility
 - Acute Short Term General and Critical Access Hospitals
 - Cancer and Children's Hospitals
 - Department of Defense and Veteran's Administration Hospitals
5. Other Health Care Facility
 - Extended or Immediate Care Facility (ECF/ICF)
 - Long Term Acute Care Hospital (LTACH)
 - Nursing Home or Facility including Veteran's Administration Nursing Facility
 - Psychiatric Hospital or Psychiatric Unit of a Hospital
 - Rehabilitation Facility including, but not limited to: Inpatient Rehabilitation Facility/Hospital, Rehabilitation Unit of a Hospital, Chemical Dependency/Alcohol Rehabilitation Facility
 - Skilled Nursing Facility (SNF), Sub-Acute Care or Swing Bed
 - Transitional Care Unit (TCU)
 - Veteran's Home
6. Expired
7. Left Against Medical Advice/AMA
99. Not documented or unable to determine

DCDT

Discharge date:

DCTM

Discharge time:

**ANTIBIO**

During the timeframe from (computer display sepresdt/seprestm - 72 hours) to (computer display sepresdt/seprestm + 6 hours) was a broad spectrum or other antibiotic administered intravenously (IV)?

1. Yes
2. No or unable to determine

Beginning with the first antibiotic administered during the timeframe from (computer display sepresdt/seprestm - 72 hours) to (computer display sepresdt/seprestm + 6 hours), enter the name of each antibiotic administered during the specified timeframe.

BIODATE - Enter the date of administration for each antibiotic.
BIOTIME - Enter the time of administration for each antibiotic.

HYPOTNS

During the time frame from (computer to display sepresdt/seprestm - 6 hours) to (computer to display sepresdt/seprestm + 6 hours) is there documentation initial hypotension was present?

Criteria for determining initial hypotension:

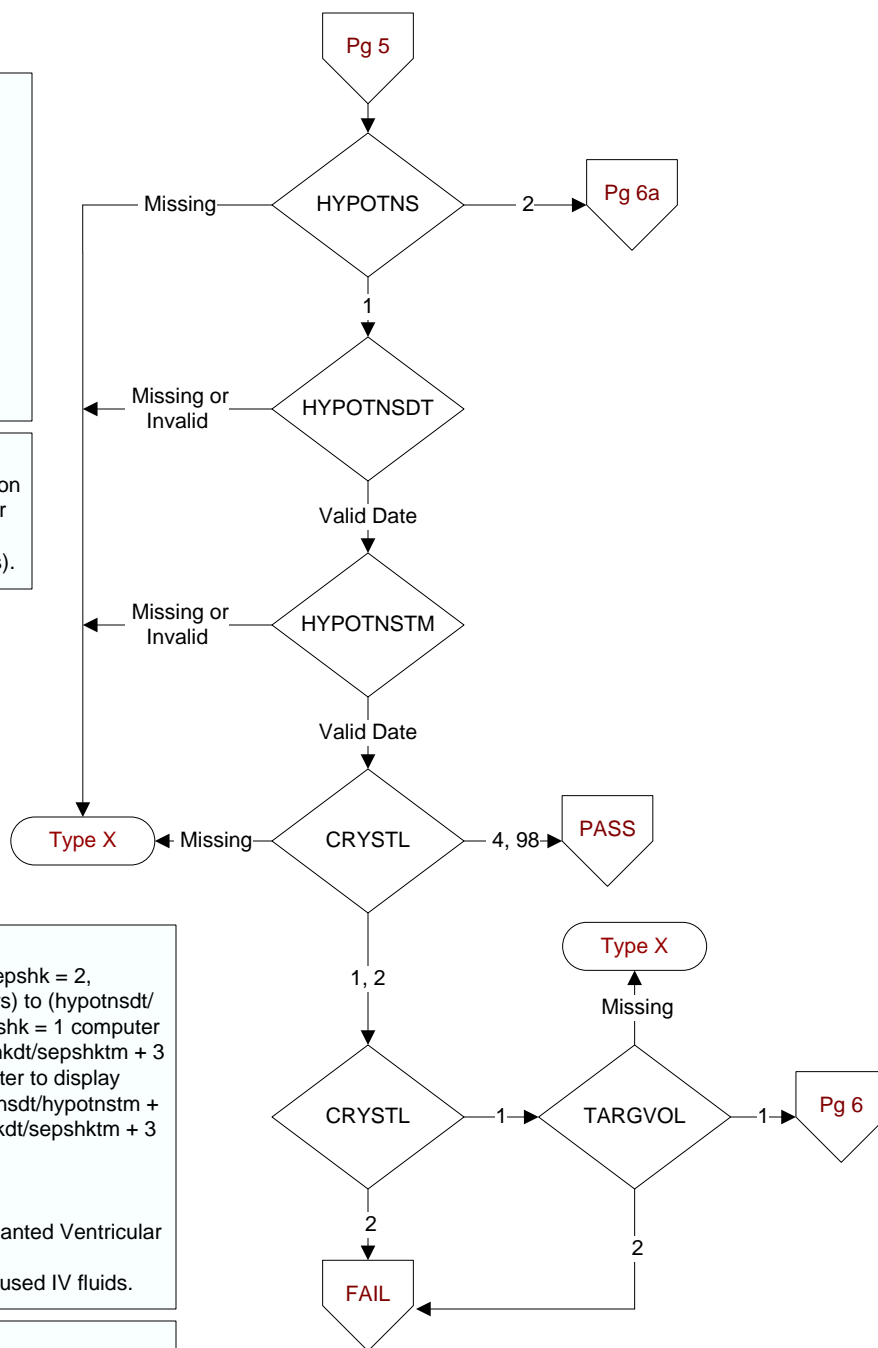
- Two hypotensive blood pressure readings at different times within specified timeframe
 - o systolic blood pressures <90, or
 - o mean arterial pressures (MAP), <65 or
 - o a decrease in systolic BP by >40 mm/Hg

1. Yes

2. No or unable to determine

HYPOTNSDT / HYPOTNSTM

Enter the date and time on which initial hypotension was present during the time frame from (computer to display sepresdt/seprestm - 6 hours) to (computer to display sepresdt/seprestm + 6 hours).

**CRYSTL**

During the timeframe from [(If hypotns = 1, and sepskh = 2, computer to display hypotnsdt/hypotnstm - 6 hours) to (hypotnsdt/hypotnstm + 3 hours) OR (If hypotns = 2 and sepskh = 1 computer to display sepskhdt/sepskhkm - 6 hours) to (sepskhdt/sepskhkm + 3 hours) OR (if hypotns = 1 and sepskh = 1, computer to display earliest of hypotnsdt/hypotnstm - 6 hrs) to (hypotnsdt/hypotnstm + 3 hours or sepskhdt/sepskhkm - 6 hours to sepskhdt/sepskhkm + 3 hours) were crystalloid fluids initiated?

1. Yes

2. No

4. There is documentation the patient has an implanted Ventricular Assist Device (VAD)

98. The patient or authorized patient advocate refused IV fluids.

TARGVOL

Is there documentation the target ordered volume of crystalloid fluids (computer to display crystlvol) initiated on (computer to display crystldt at crystltm) was completely infused?

1. Yes

2. No

CRYSTLDT / CRYSTLTM

Enter the earliest date and time on which crystalloid fluids were initiated.

PERSHYPO

During the time frame from (computer display crstlnd) to (computer to display crstlnd + 1 hour) is there physician/APN/PA documentation that persistent hypotension or new onset of hypotension was present?

Criteria for determining persistent or new onset of hypotension:

- Two hypotensive blood pressure readings at different times within specified timeframe
 - o systolic blood pressures <90, or
 - o mean arterial pressures (MAP), <65 or
 - o a decrease in systolic BP by >40 mm/Hg

1. Yes
2. No or Unable to determine
3. No, the patient was not assessed for persistent hypotension or new onset of hypotension within one hour after the conclusion of crystalloid fluid administration at the target ordered volume.
4. Not applicable - Crystalloid fluids were administered but at a volume less than the target ordered volume

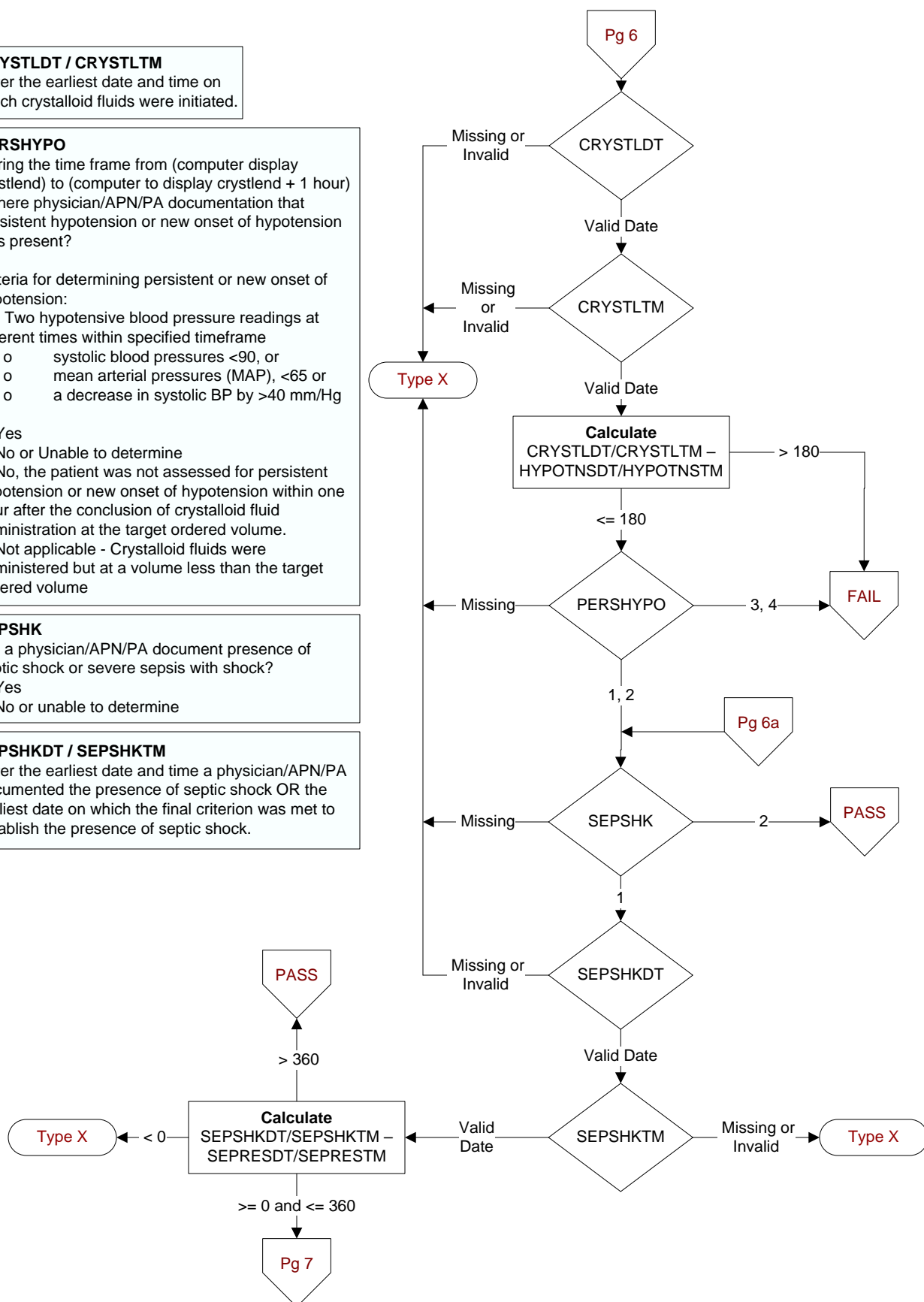
SEPSHK

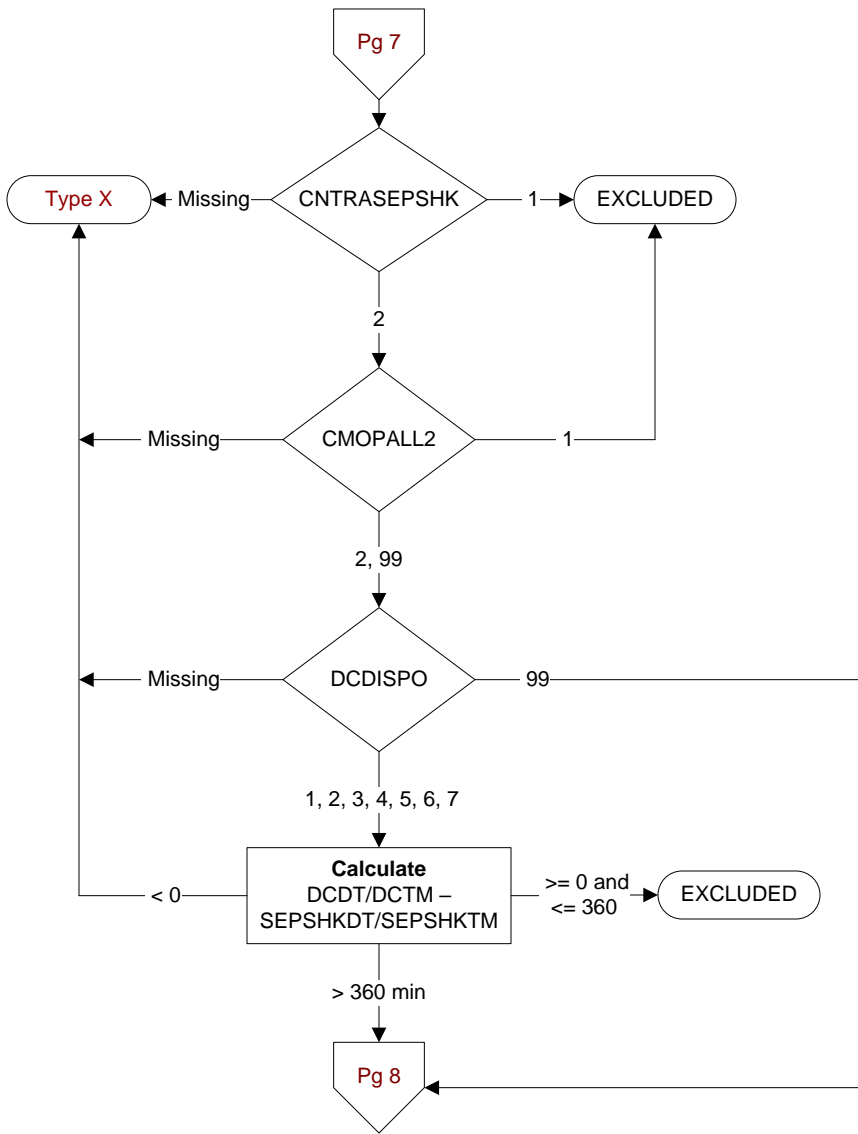
Did a physician/APN/PA document presence of septic shock or severe sepsis with shock?

1. Yes
2. No or unable to determine

SEPSHKDT / SEPSHKTM

Enter the earliest date and time a physician/APN/PA documented the presence of septic shock OR the earliest date on which the final criterion was met to establish the presence of septic shock.





CNTRASEPSHK

During the timeframe from (computer to display sepshktm - 6 hours) to (computer to display sepshktm + 6 hours) is there physician/APN/PA or nursing documentation that the patient or authorized patient advocate refused either a blood draw, IV fluid administration, or vasopressor administration?

- 1. Yes
- 2. No or unable to determine

CMOPALL2

During the timeframe from (computer to display sepshktm - 6 hours) to (computer to display sepshktm + 6 hours) is there physician/APN/PA documentation of comfort measures only or palliative care?

- 1. Yes
- 2. No
- 99. Not documented or time is unclear

