

**Document Links:**[Sepsis Instrument](#)**REVSTAT**

REVIEW STATUS (not abstracted)

0. Abstraction has not begun
1. Abstraction in progress
2. Abstraction completed w/o errors
3. Cohort validation failure (exclusion)
4. Record contains missing data
5. Administrative exclusion from all measures

**AGE**

Calculated field – ARRVDAT - BIRTHDT

**DCDT**

Discharge date

**ADMDT**

Admission date

**TRNSFR**

Is there documentation the patient was received as a transfer from an inpatient, outpatient or emergency/ observation department of an outside hospital or from an ambulatory surgery center?

1. Yes
2. No

**CLNTRIAL**

During this hospital stay, was the patient enrolled in a clinical trial in which patients with sepsis/septic shock were being studied?

1. Yes
2. No

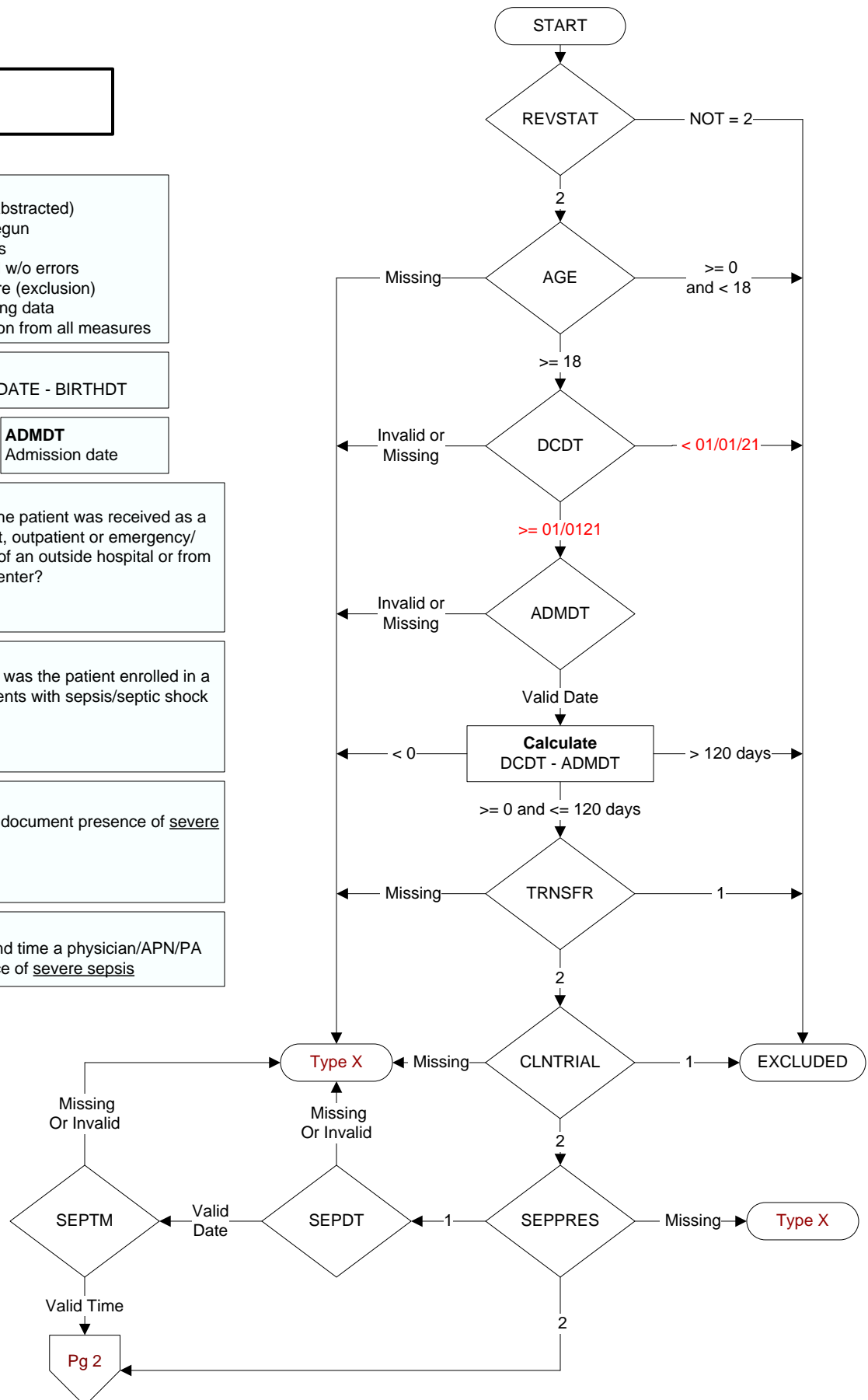
**SEPPRES**

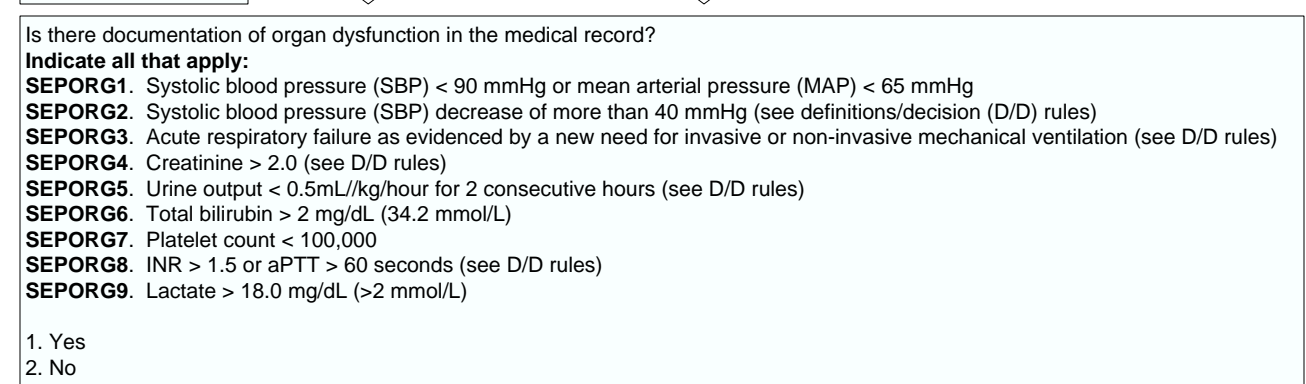
Did a physician/APN/PA document presence of severe sepsis?

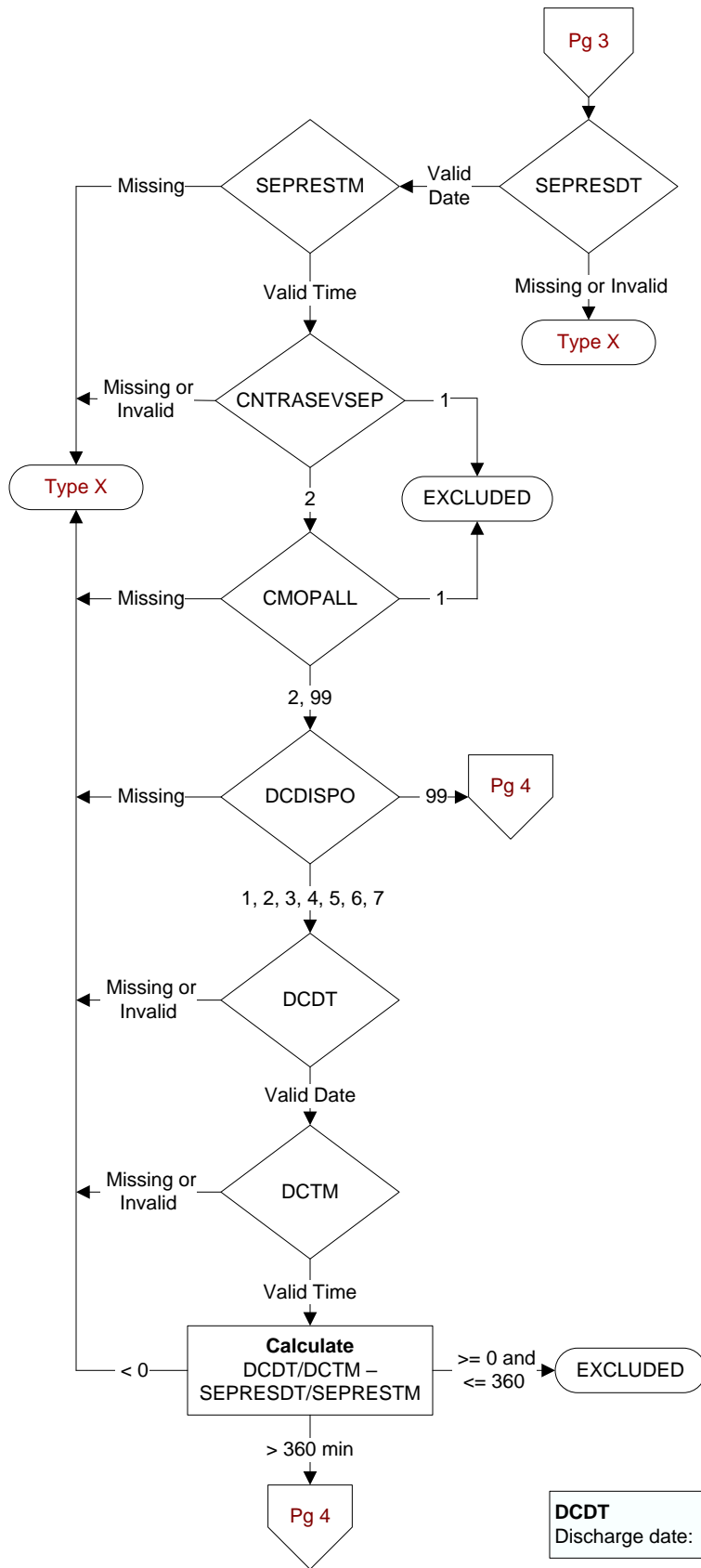
1. Yes
2. No

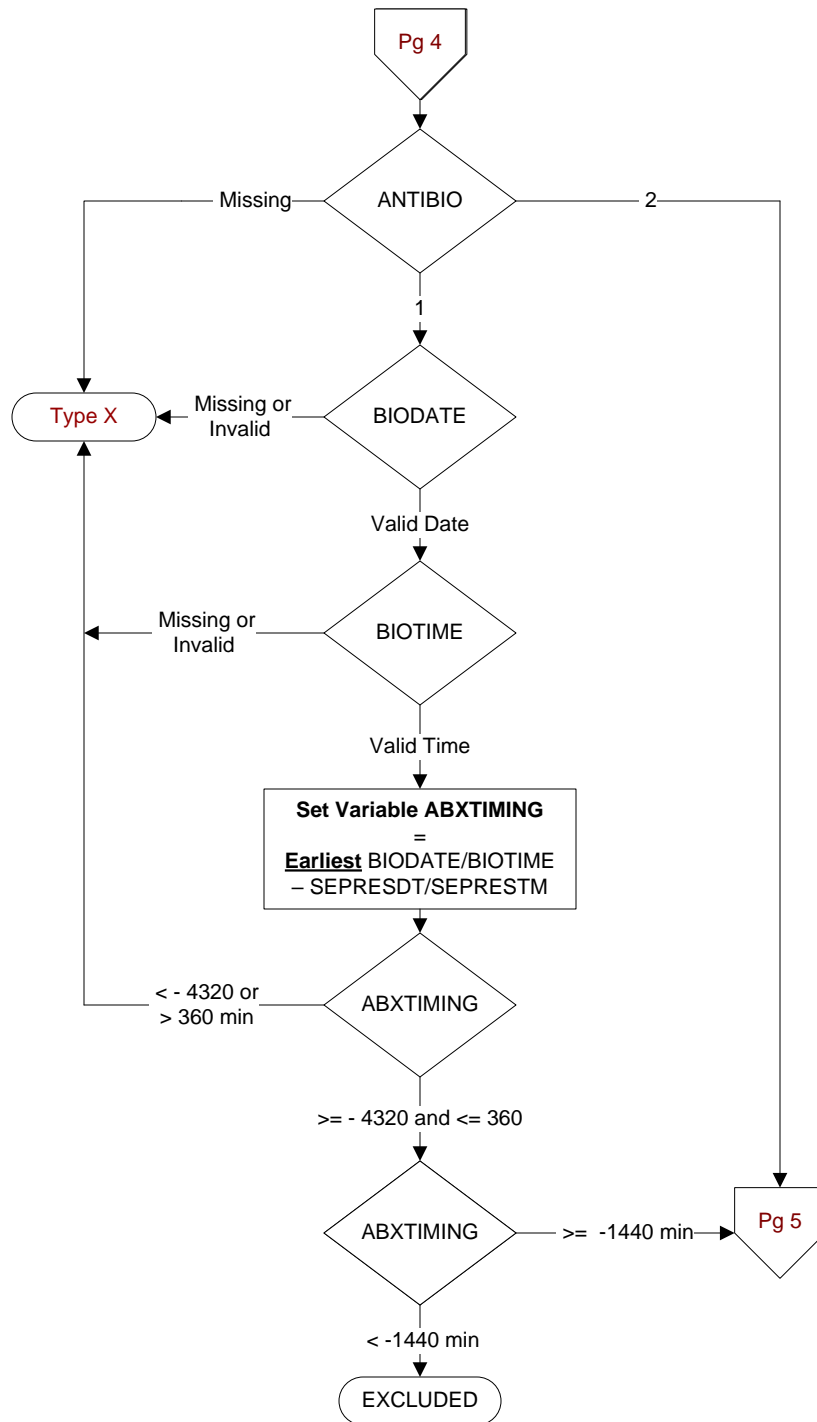
**SEPDT / SEPTM**

Enter the earliest date and time a physician/APN/PA documented the presence of severe sepsis







**ANTIBIO**

During the timeframe from (computer display sepresdt/seprestm - 72 hours) to (computer display sepresdt/seprestm + 6 hours) was a broad spectrum or other antibiotic administered intravenously (IV)?

1. Yes
2. No or unable to determine

Beginning with the first antibiotic administered during the timeframe from (computer display sepresdt/seprestm - 72 hours) to (computer display sepresdt/seprestm + 6 hours), enter the name of each antibiotic administered during the specified timeframe.

**BIODATE** - Enter the date of administration for each antibiotic.  
**BIOTIME** - Enter the time of administration for each antibiotic.

