

Document Links:

[Cataract Surgery Instrument](#)

REVSTAT

REVIEW STATUS (not abstracted)

- 0. Abstraction has not begun
- 1. Abstraction in progress
- 2. Abstraction completed w/o errors
- 3. TVG failure (exclusion)
- 4. Record contains missing required answers
- 5. Administrative exclusion from all measures

STDYBEG (rcvd on pull list)

Begin date of study interval

STDYEND (rcvd on pull list)

End date of study interval

CATSURDT

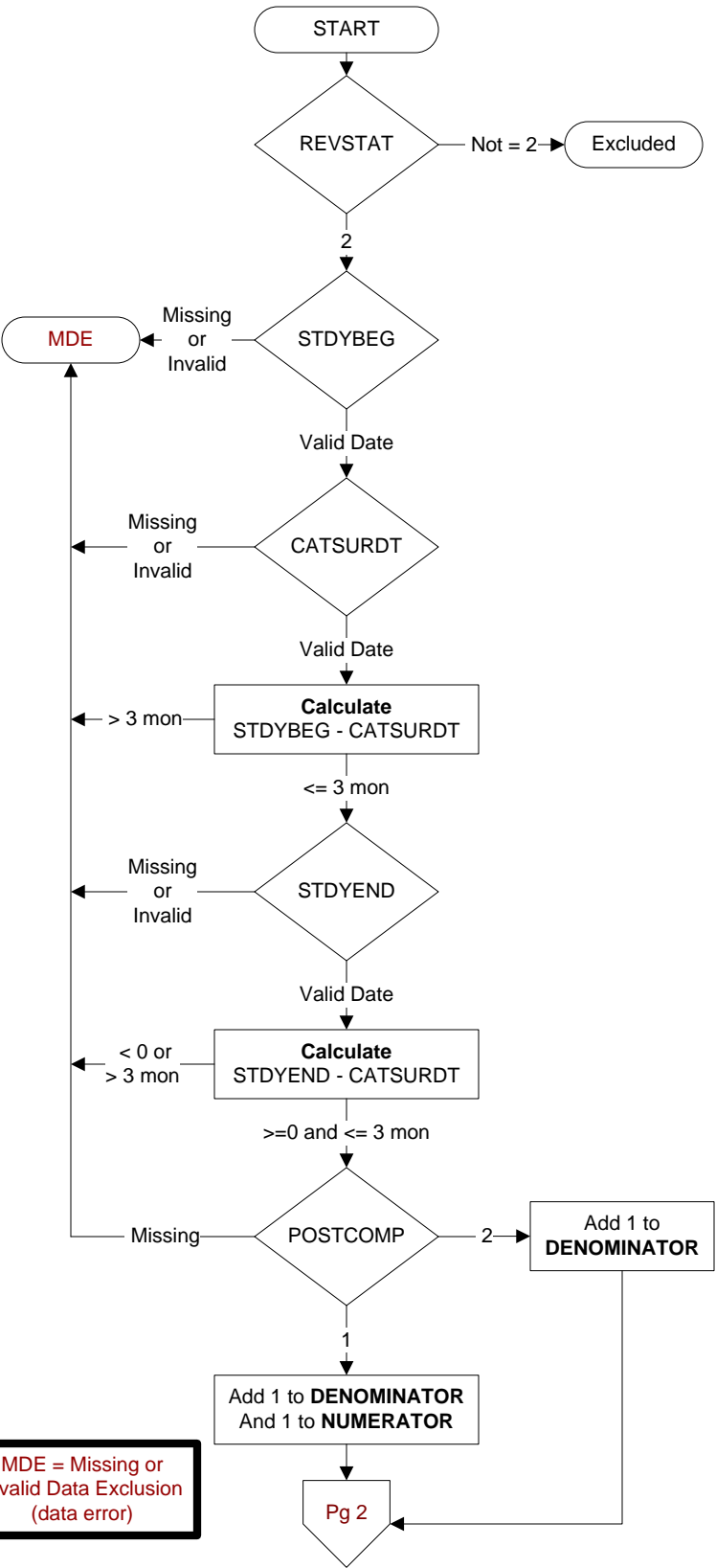
Enter the date of the earliest cataract surgery performed at this VAMC during the timeframe from (computer display stdybeg – 3 months to stdyend – 3 months).

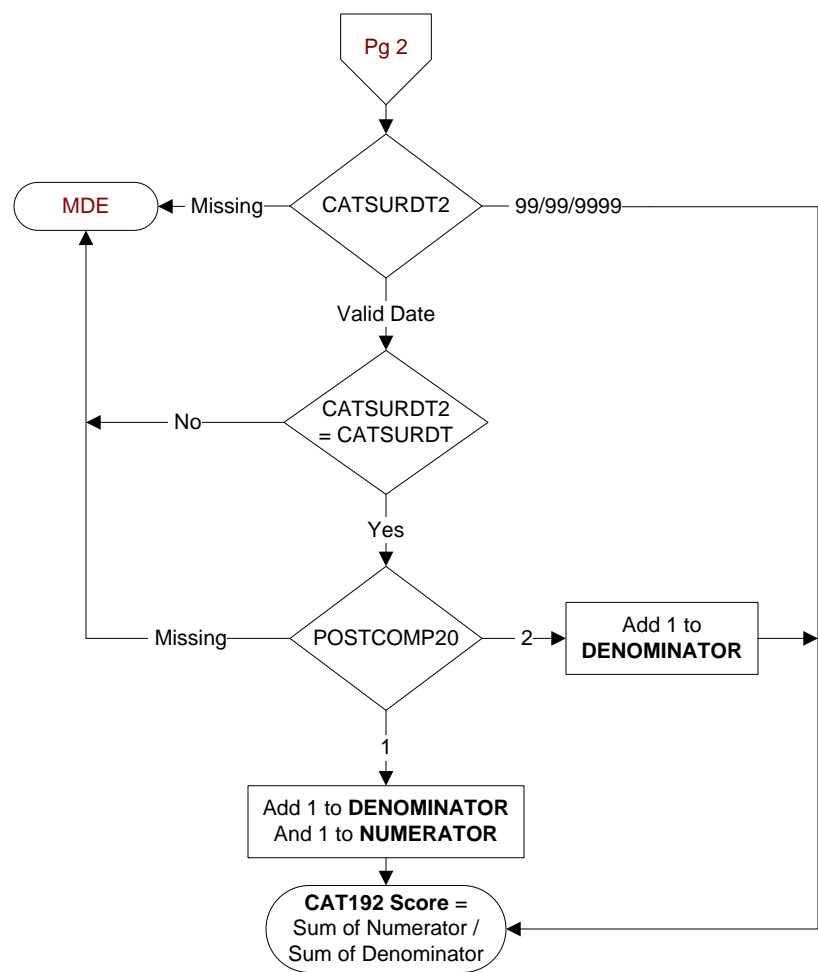
POSTCOMP

During the timeframe from (computer display catsurdt to catsurdt + 30 days), did the ophthalmologist document any complications requiring an additional surgical procedure?

- Retained lens fragments (residual parts of the natural lens such as the nucleus or cortex left in the eye)
- Endophthalmitis (serious infection in the eye)
- Dislocated lens implant
- Wrong power lens implant
- Retinal detachment
- Wound dehiscence

- 1. Yes
- 2. No





CATSURDT2 Enter the date of the second cataract surgery performed at this VAMC on (computer display catsurdt).	POSTCOMP20 During the timeframe from (computer display catsurdt2 to catsurdt2 + 30 days), did the ophthalmologist document any complications requiring an additional surgical procedure? <ul style="list-style-type: none">• Retained lens fragments (residual parts of the natural lens such as the nucleus or cortex left in the eye)• Endophthalmitis (serious infection in the eye)• Dislocated lens implant• Wrong power lens implant• Retinal detachment• Wound dehiscence 1. Yes 2. No
--	---