

Document Links:[CGPI PI Module](#)[CGPI MH Module](#)**CATNUM**

Sample cohort

16. AMI - Outpatient visit
 36. SCI Dx
 48. Female, age 20-69
 50. Random Sample
 51. Random Sample MH
 54. Frail/Elderly
 60. DM Outpatient
 61. Inpatient SC
 68. Contract CBOC

REVSTAT

REVIEW STATUS (not abstracted)

0. Abstraction has not begun
 1. Abstraction in progress
 2. Abstraction completed w/o errors
 3. TVG failure (exclusion)
 4. Record contains missing data
 5. Administrative exclusion from all measures

HOSPICE (PI module)

During the past year is there documentation in the medical record the patient is enrolled in a VHA or community-based hospice program?

1. Yes
 2. No

TERMILL (PI module)Is one of the following documented in the medical record?

- The patient has a diagnosis of cancer of the liver, pancreas, or esophagus
- On the problem list it is documented the patient's life expectancy is less than 6 months?

1. Yes
 2. No

DEMENTDX2 (MH)

During the past year, does the record document a diagnosis of dementia/neurocognitive disorder as evidenced by one of the following ICD-10-CM diagnosis codes:

A81.00, A81.01, A81.09, A81.2, A81.82, A81.89, A81.9, F01.50, F01.51, F02.80, F02.81, F03.90, F03.91, F10.27, F10.97, F13.27, F13.97, F18.17, F18.27, F18.97, F19.17, F19.27, F19.97, G23.1, G30.0, G30.1, G30.8, G30.9, G31.01, G31.09, G31.83, G90.3

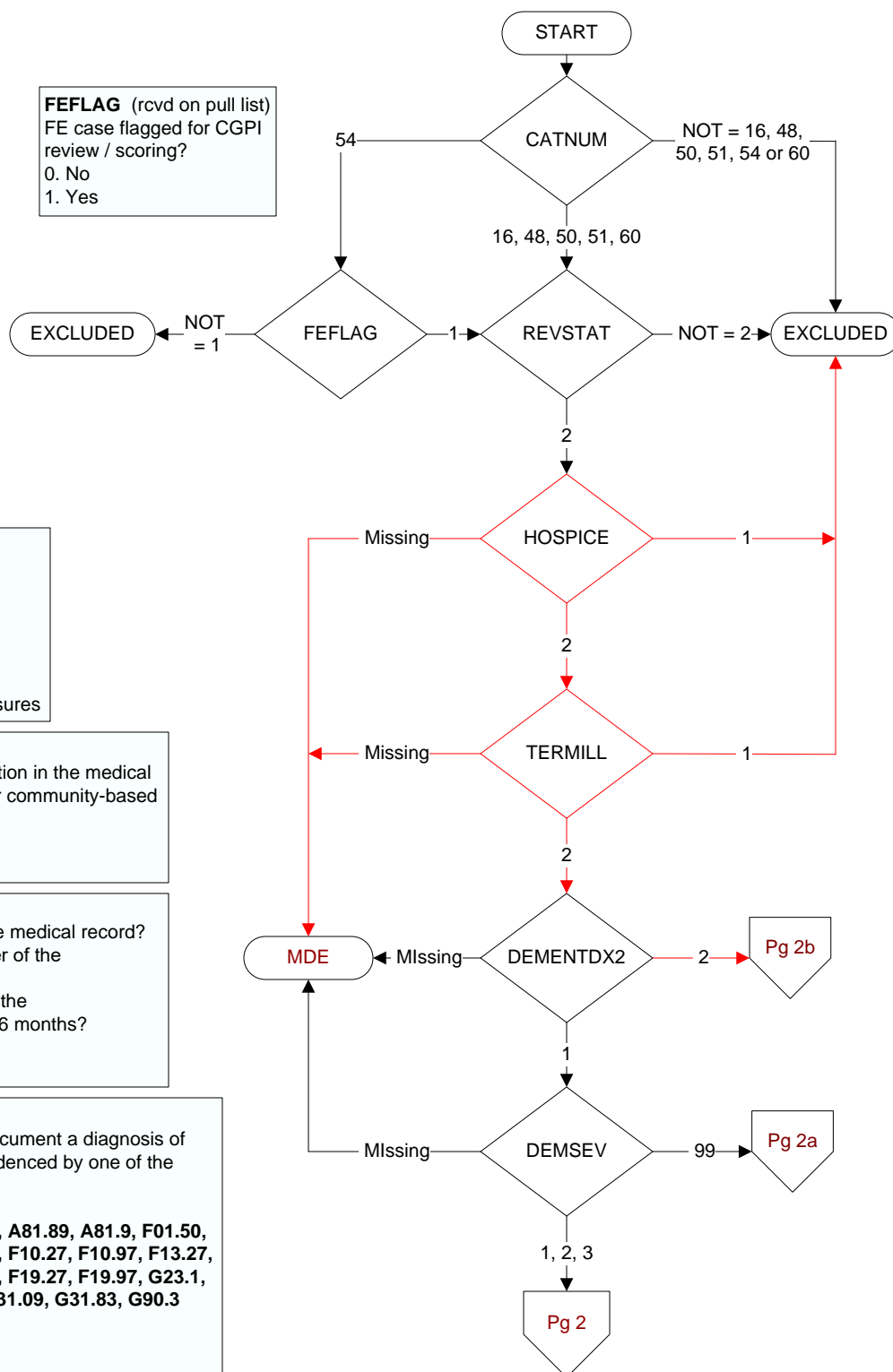
1. Yes
 2. No

DEMSEV (MH)

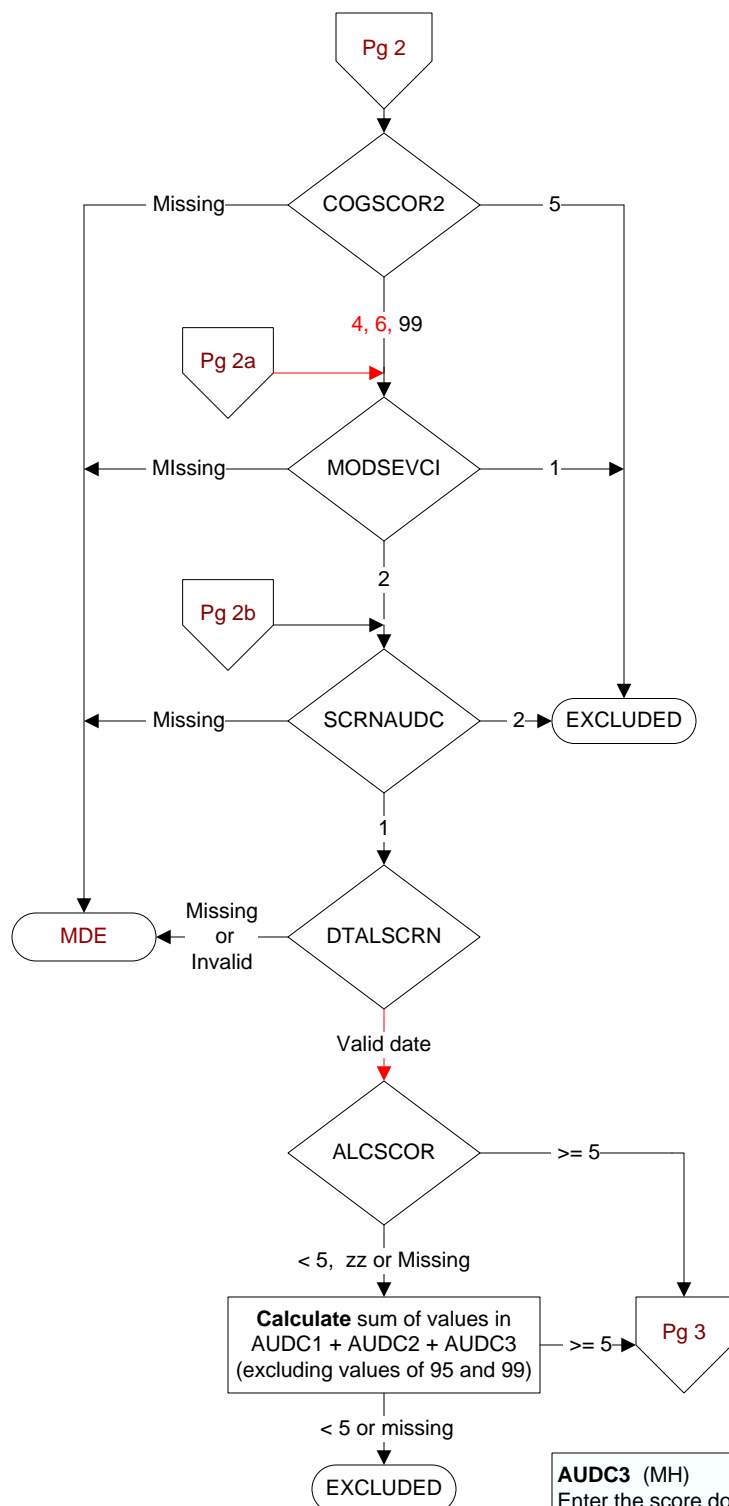
Was the severity of dementia assessed during the past year using one of the following standardized tools?

1. Clinical Dementia Rating Scale (CDR)
 2. Functional Assessment Staging Tool (FAST)
 3. Global Deterioration Scale (GDS)
 99. Severity of dementia was not assessed during the past year using one of the specified tools

FEFLAG (rcvd on pull list)
 FE case flagged for CGPI review / scoring?
 0. No
 1. Yes



**MDE = Missing or
 Invalid Data Exclusion
 (data error)**

**COGSCOR2 (MH)**

What was the outcome of the assessment of the severity of dementia assessment?

- 4. Score indicated mild dementia
- 5. Score indicated moderate to severe dementia
- 6. Score indicated no dementia
- 99. No score documented in the record or unable to determine outcome

MODSEVCI (MH)

During the past year, did the clinician document in the record that the patient has moderate or severe cognitive impairment?

- 1. Yes
- 2. No

SCRNAUDC (MH)

Within the past year, was the patient screened for alcohol misuse with the AUDIT-C?

- 1. Yes
- 2. No

DTALSCRN (MH)

Enter the most recent date of screening for alcohol misuse with the AUDIT-C.

ALCSCOR (MH)

Enter the total AUDIT-C score documented within the past year in the medical record.

AUDC1 (MH)

Enter the score documented for AUDIT -C Question # 1 in the past year.

"How often did you have a drink containing alcohol in the past year?"

- 0. Never
- 1. Monthly or less
- 2. Two to four times a month
- 3. Two to three times a week
- 4. Four or more times a week
- 99. Not documented

AUDC2 (MH)

Enter the score documented for AUDIT-C Question #2 in the past year.

"How many drinks containing alcohol did you have on a typical day when you were drinking in the past year?"

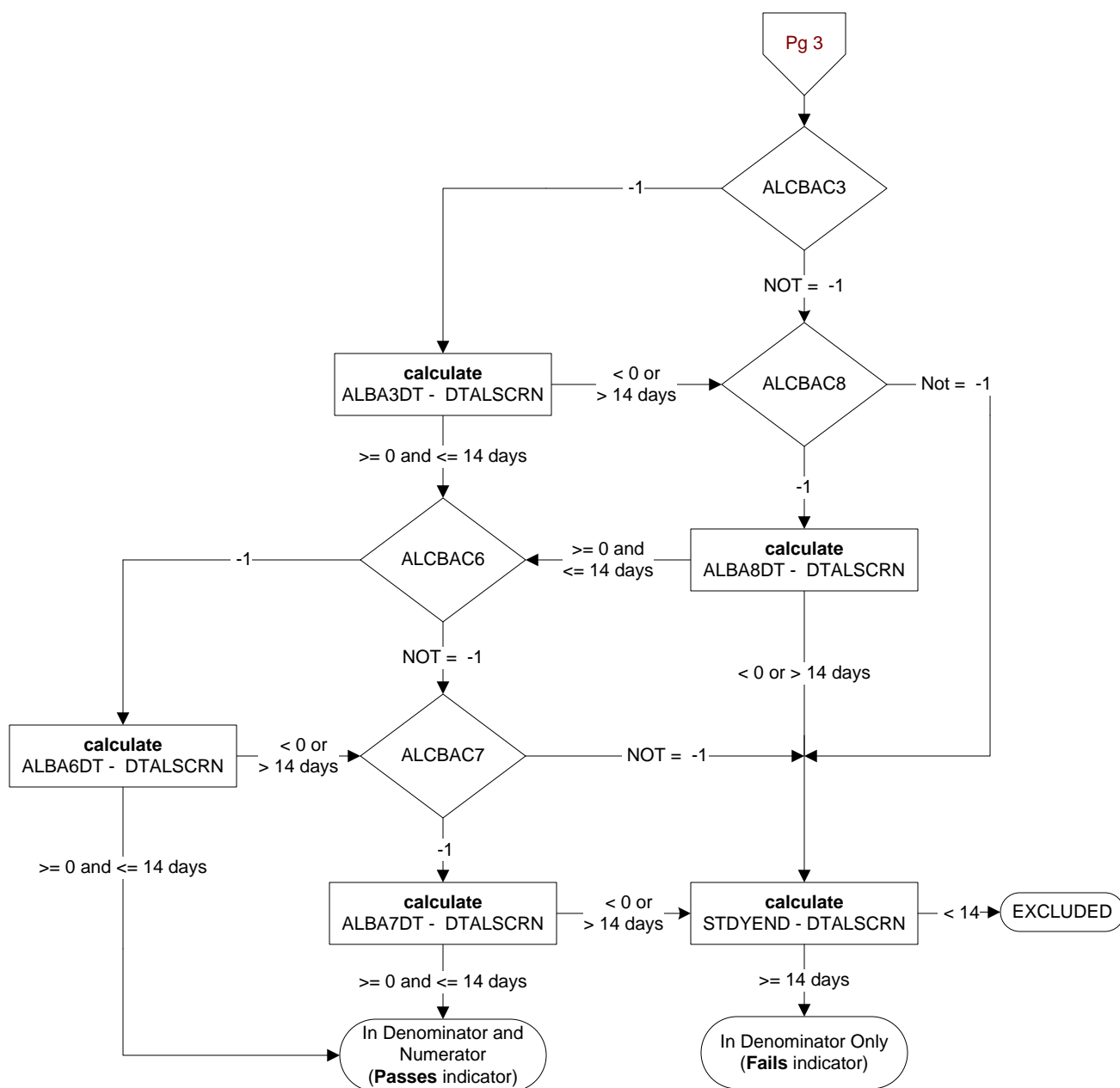
- 0. 1 or 2
- 1. 3 or 4
- 2. 5 or 6
- 3. 7 to 9
- 4. 10 or more
- 95. Not applicable
- 99. Not documented

AUDC3 (MH)

Enter the score documented for AUDIT-C Question #3 in the past year.

"How often did you have six or more drinks on one occasion in the past year?"

- 0. Never
- 1. Less than monthly
- 2. Monthly
- 3. Weekly
- 4. Daily or almost daily
- 95. Not applicable
- 99. Not documented



During the timeframe from (Computer to enter DTALSCRN to DTALSCRN +14 days), does the record document any of the following components of brief alcohol intervention/counseling for past-year drinkers? (MH)

Indicate all that apply and the date brief alcohol intervention/counseling was noted in the record:

ALCBAC3. Advice to abstain
ALBA3DT = Date of ALCBAC3
ALCBAC6. Personalized feedback regarding relationship of alcohol to the patient's specific health issues
ALBA6DT = Date of ALCBAC6
ALCBAC7. General alcohol-related intervention/counseling (not linked to patient's issues)
ALBA7DT = Date of ALCBAC7
ALCBAC8. Explicitly advised patient to drink within recommended limits
ALBA8DT = Date of ALCBAC8
ALCBA95. Not applicable
ALCBA99. No alcohol intervention/counseling documented

-1 = Yes
 0 = No