

Document Links:[CGPI Validation Module](#)[CGPI OP Med Recon Module](#)**CATNUM**

Sample category

- 16. AMI - Outpatient visit
- 36. SCI Dx
- 48. Female, age 20-69
- 50. Random Sample
- 51. Random Sample MH
- 54. Frail/Elderly
- 60. DM Outpatient
- 61. Inpatient SC
- 68. Contract CBOC

REVSTAT

REVIEW STATUS (not abstracted)

- 0. Abstraction has not begun
- 1. Abstraction in progress
- 2. Abstraction completed w/o errors
- 3. TVG failure (exclusion)
- 4. Record contains missing required answers
- 5. Administrative exclusion from all measures

OTHCARE (CGPI Validation)

Is there evidence in the medical record that within the past two years, the patient refused VHA Primary Care and is receiving ONLY his/her primary care in a non-VHA setting?

- 1. yes
- 2. no

NEXUSPP (OP MRec)

Was the NEXUS clinic encounter on (computer to display NEXUSDT) with a physician/APN/PA in a non-group setting?

- 1. Yes
- 2. No

OPTMED1-8 (OP MedRec)

During the most recent NEXUS encounter on (computer to display NEXUSDT), is there evidence in the medical record that the prescribing provider's note included or referenced a medication list for review including all of the following components?

Medication List Component**OPTMED1.** Active VA Prescriptions

- 1. Yes
- 2. No

OPTMED2. Remote Active VA Prescriptions

- 1. Yes
- 2. No

OPTMED3. Non-VA Medications

- 1. Yes
- 2. No

OPTMED4. Expired VA Prescriptions (see D/D rules)

- 1. Yes
- 2. No

OPTMED5. Discontinued VA Prescriptions (see D/D rules)

- 1. Yes
- 2. No

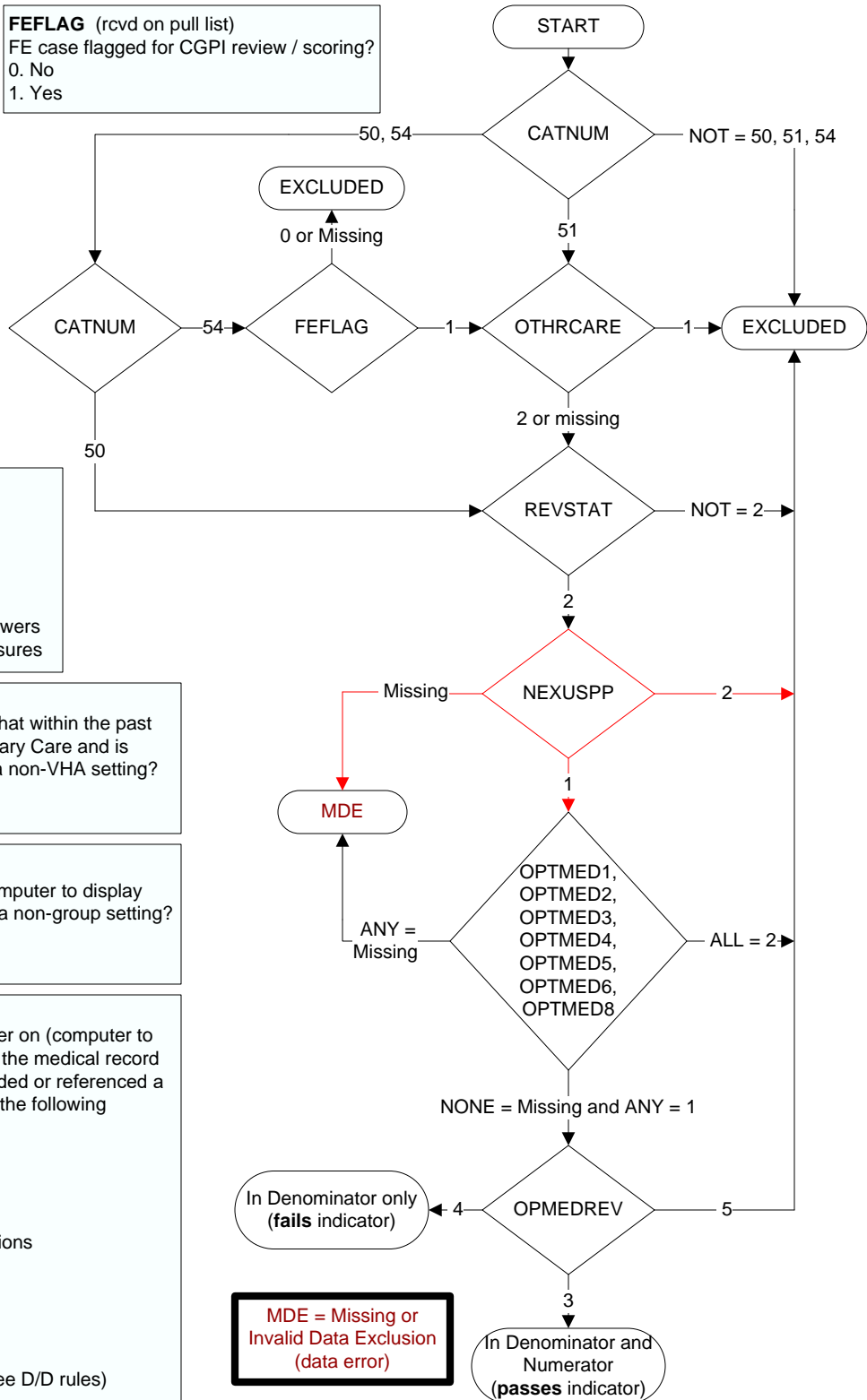
OPTMED6. Pending Medication Orders

- 1. Yes
- 2. No

OPTMED8. Allergies (Remote Facility AND Local Facility)

- 1. Yes
- 2. No

FEFLAG (rcvd on pull list)
FE case flagged for CGPI review / scoring?
0. No
1. Yes



**MDE = Missing or
Invalid Data Exclusion
(data error)**

OPMEDREV (OP MedRec)

During the most recent NEXUS encounter on (computer to display NEXUSDT), is there documentation the available essential medication list components were reviewed with the patient/caregiver?

- 3. Yes
- 4. No: There is no documentation that the available essential medication list components were reviewed with the patient/caregiver
- 5. Documented the patient/caregiver refused or was unable to participate in review of essential medication list components