

Document Links:[CGPI Validation Module](#)[CGPI OP Med Recon Module](#)**CATNUM**

Sample category
 16. AMI - Outpatient visit
 36. SCI Dx
 48. Female, age 20-69
 50. Random Sample
 51. Random Sample MH
 54. Frail/Elderly
 60. DM Outpatient
 61. Inpatient SC
 68. Contract CBOC

REVSTAT

REVIEW STATUS (not abstracted)
 0. Abstraction has not begun
 1. Abstraction in progress
 2. Abstraction completed w/o errors
 3. TVG failure (exclusion)
 4. Record contains missing required answers
 5. Administrative exclusion from all measures

OTHCARE (CGPI Validation)

Is there evidence in the medical record that within the past two years, the patient refused VHA Primary Care and is receiving ONLY his/her primary care in a non-VHA setting?
 1. yes
 2. no

OPTMED1-8 (OP MedRec)

During the most recent NEXUS encounter on (computer to display NEXUSDT), is there evidence in the medical record that the prescribing provider's note included or referenced a medication list for review including all of the following components?

Medication List Component**OPTMED1.** Active VA Prescriptions

1. Yes
 2. No

OPTMED2. Remote Active VA Prescriptions

1. Yes
 2. No

OPTMED3. Non-VA Medications

1. Yes
 2. No

OPTMED4. Expired VA Prescriptions (see D/D rules)

1. Yes
 2. No

OPTMED5. Discontinued VA Prescriptions (see D/D rules)

1. Yes
 2. No

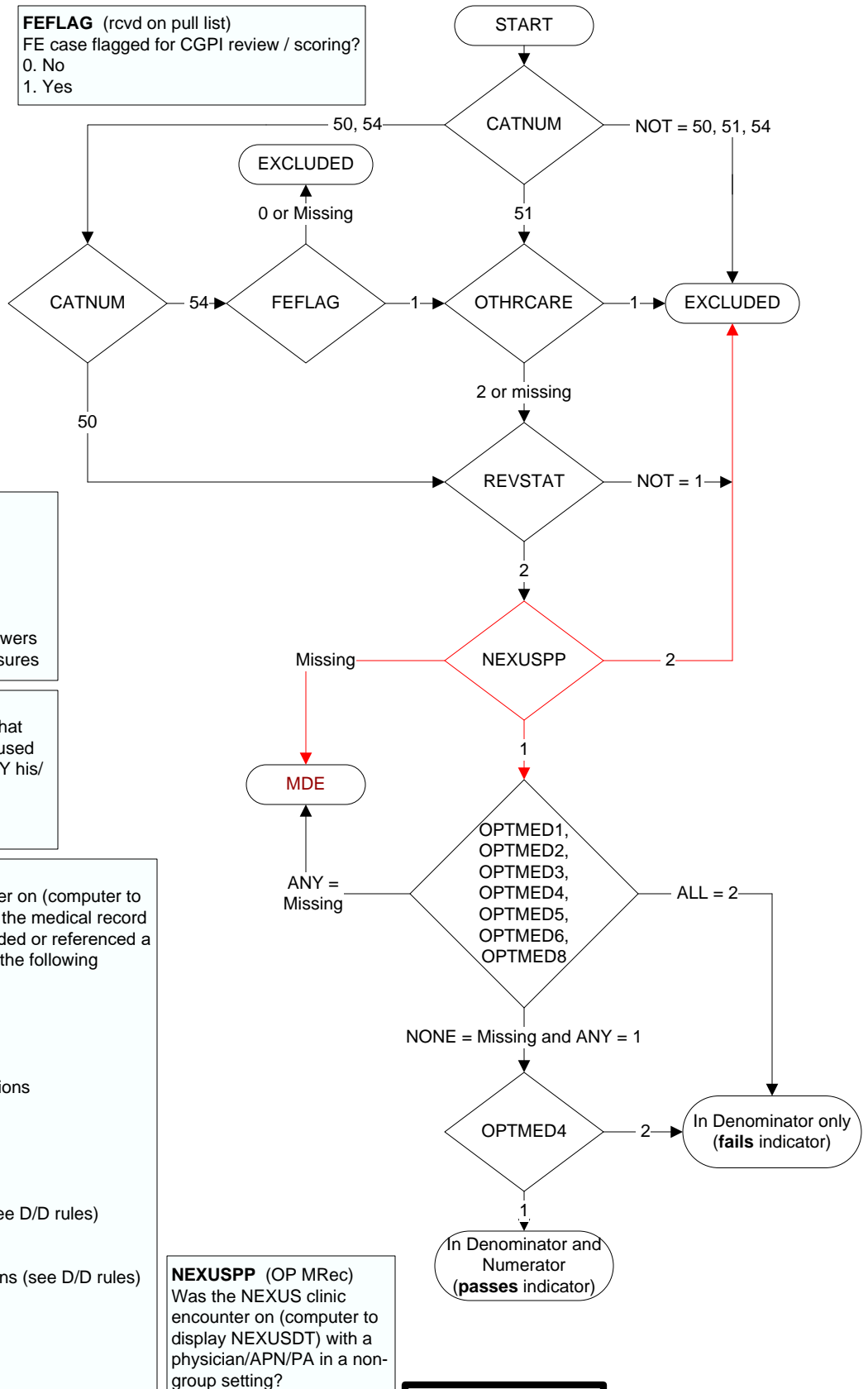
OPTMED6. Pending Medication Orders

1. Yes
 2. No

OPTMED8. Allergies (Remote Facility **AND** Local Facility)

1. Yes
 2. No

FEFLAG (rcvd on pull list)
 FE case flagged for CGPI review / scoring?
 0. No
 1. Yes



NEXUSPP (OP MRec)
 Was the NEXUS clinic encounter on (computer to display NEXUSDT) with a physician/APN/PA in a non-group setting?

1. Yes
 2. No

MDE = Missing or Invalid Data Exclusion (data error)