

**Document Links:**[Global Measures Instrument](#)[Inpt MedRecon Module](#)**REVSTAT**

REVIEW STATUS (not abstracted)

0. Abstraction has not begun
1. Abstraction in progress
2. Abstraction completed w/o errors
3. TVG failure (exclusion)
4. Record contains missing required answers
5. Administrative exclusion from all measures

**CATNUM**

Sample Cohort (rcvd on pull list)  
70. Global Measures

**ADMDT (GM)**

Admission date:

**DCDT (GM)**

Discharge date:

**REVPTMED1-9 (IP MedRec)**

Upon admission or during the 24 hours after admission, is there evidence in the medical record that the prescribing provider's note included or referenced a medication list for review including all of the following components?

**Essential Medication List Component****REVPTMED1. Active VA Prescriptions**

1. Yes
2. No

**REVPTMED2. Remote Active VA Prescriptions**

1. Yes
2. No

**REVPTMED3. Non-VA Medications**

1. Yes
2. No

**REVPTMED4. Expired VA Prescriptions (see D/D rules)**

1. Yes
2. No

**REVPTMED5. Discontinued VA Prescriptions (see D/D rules)**

1. Yes
2. No

**REVPTMED6. Pending Medication Orders**

1. Yes
2. No

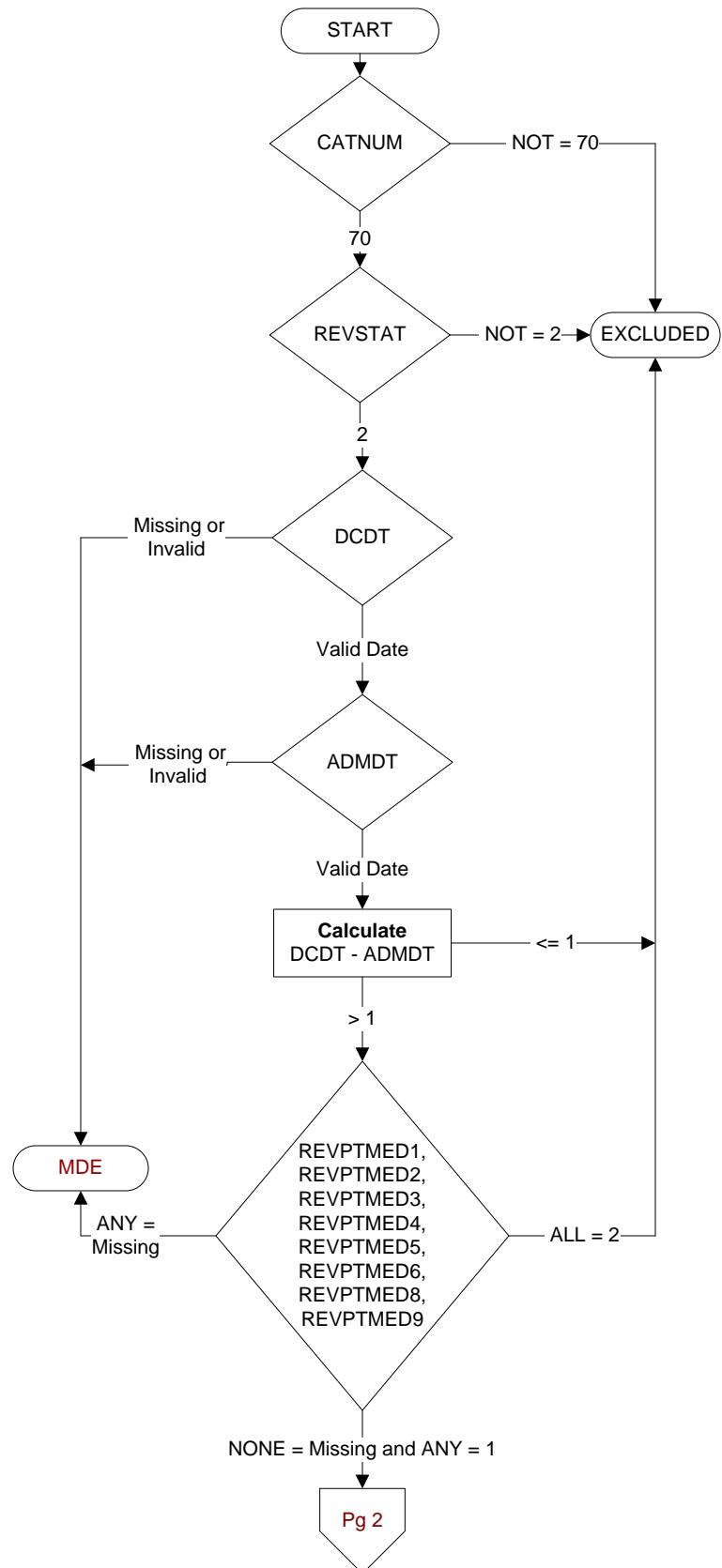
**REVPTMED8. Inpatient Medications**

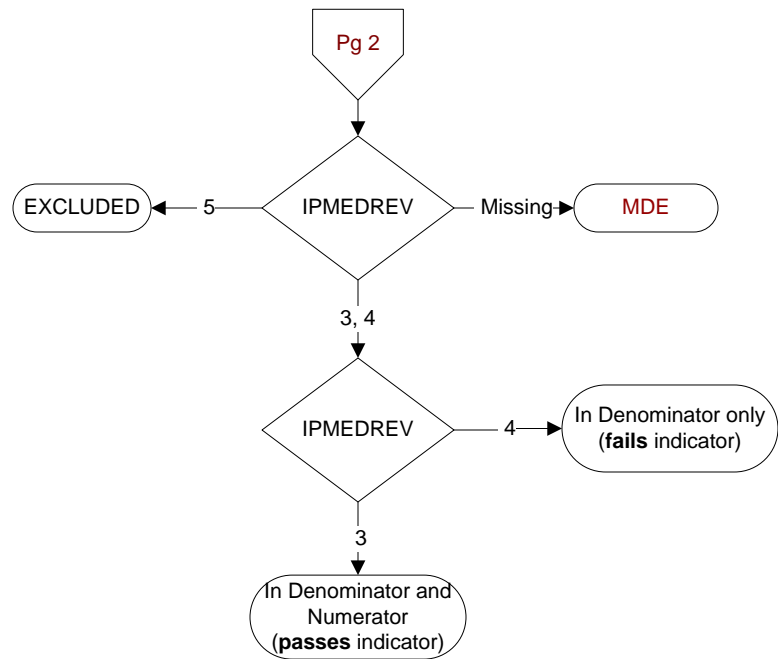
1. Yes
2. No

**REVPTMED9. Allergies (Remote Facility AND Local Facility)**

1. Yes
2. No

**MDE = Missing or  
Invalid Data Exclusion  
(data error)**





**IPMEDREV (IP MedRec)**

Upon admission or during the 24 hours after admission, is there documentation the available medication list components were reviewed with the patient/caregiver?

3. Yes

4. No: There is no documentation that the available essential medication list components were reviewed with the patient/caregiver

5. Documentation the patient/caregiver refused or was unable to participate in review of essential medication list components