

**Document Links:**[HBPC Instrument](#)**CATNUM**

Sample cohort  
69 – Home Based Primary Care

**REVSTAT**

REVIEW STATUS (not abstracted)

0. Abstraction has not begun
1. Abstraction in progress
2. Abstraction completed w/o errors
3. TVG failure (exclusion)
4. Record contains missing required answers
5. Administrative Exclusion

**HCSTATUS** (HBPC)

Counting from the most recent HBPC encounter within the study interval, enter the patient's status in regard to HBPC admission:

2. HBPC admission greater than or equal to 30 days but less than or equal to 1 year
3. HBPC admission greater than one year (>365 days from the admission date)

**INPTADM** (HBPC)

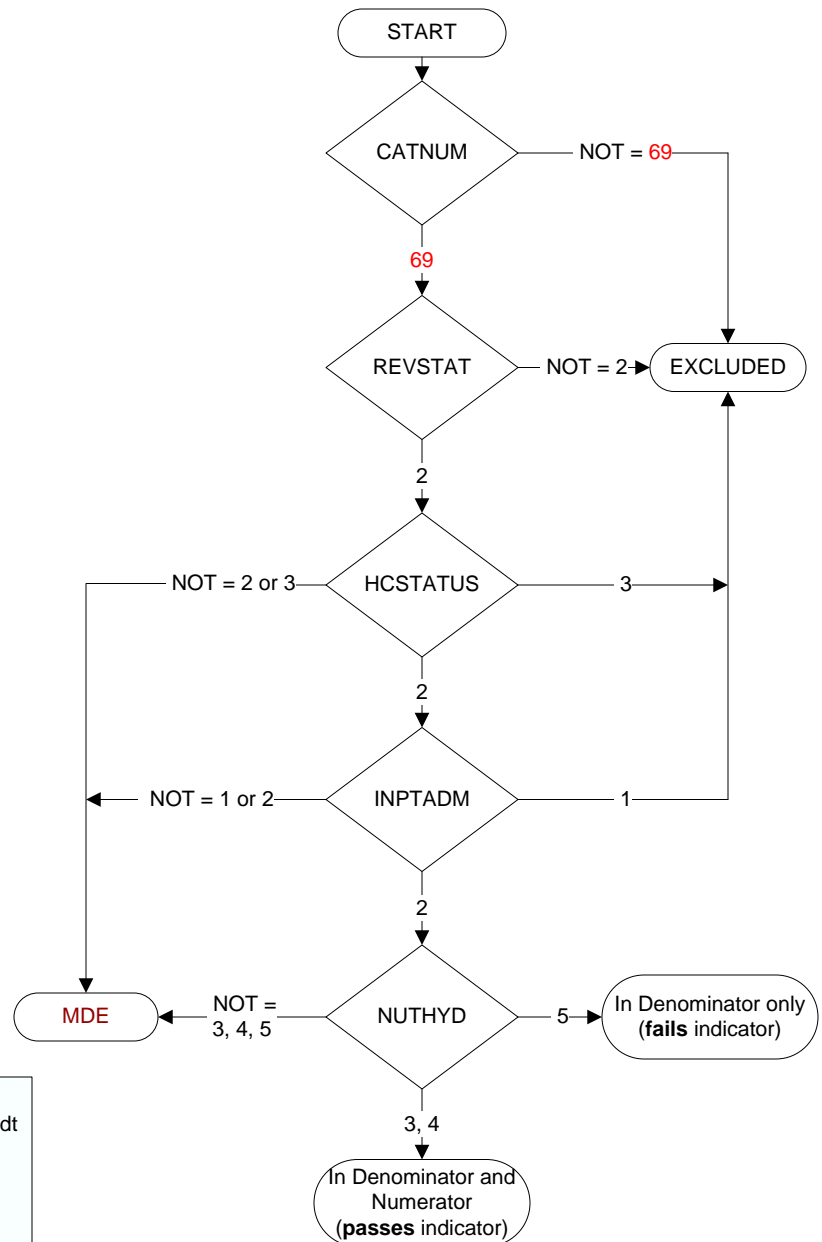
During the time frame from (computer display admisdt to admisdt + 30 days), did the record document the patient was hospitalized?

1. Yes
2. No

**NUTHYD** (HBPC)

During the time frame from (computer to display admisdt – 30 days to admisdt + 30 days), does the record document assessment of the patient's nutritional and hydration needs by a registered or clinical dietitian during a face-to-face or clinical video telehealth (CVT) encounter?

3. Yes, assessment of patient's nutritional and hydration needs by a registered or clinical dietitian was documented during a **face-to-face encounter**.
4. Yes, assessment of patient's nutritional and hydration needs by a registered or clinical dietitian was documented during a **CVT encounter**.
5. No assessment of the patient's nutritional and hydration needs was documented by a registered or clinical dietitian during a face-to-face or clinical video telehealth (CVT) encounter



**MDE = Missing or  
Invalid Data Exclusion  
(data error)**