

**REVSTAT**

REVIEW STATUS (not abstracted)

0. Abstraction has not begun
1. Abstraction in progress
2. Abstraction completed w/o errors
3. TVG failure (exclusion)
4. Record contains missing data or errors
5. Administrative exclusion from all measures

**AGE**

Calculated field – ARRVDAT - BIRTHDT

**DCDT**

Discharge date

**ADMDT**

Admission date

**TRNSFR**

Is there documentation the patient was received as a transfer from an inpatient, outpatient or emergency/ observation department of an outside hospital or from an ambulatory surgery center?

1. Yes
2. No

**CLNTRIAL**

During this hospital stay, was the patient enrolled in a clinical trial in which patients with sepsis/septic shock were being studied?

1. Yes
2. No

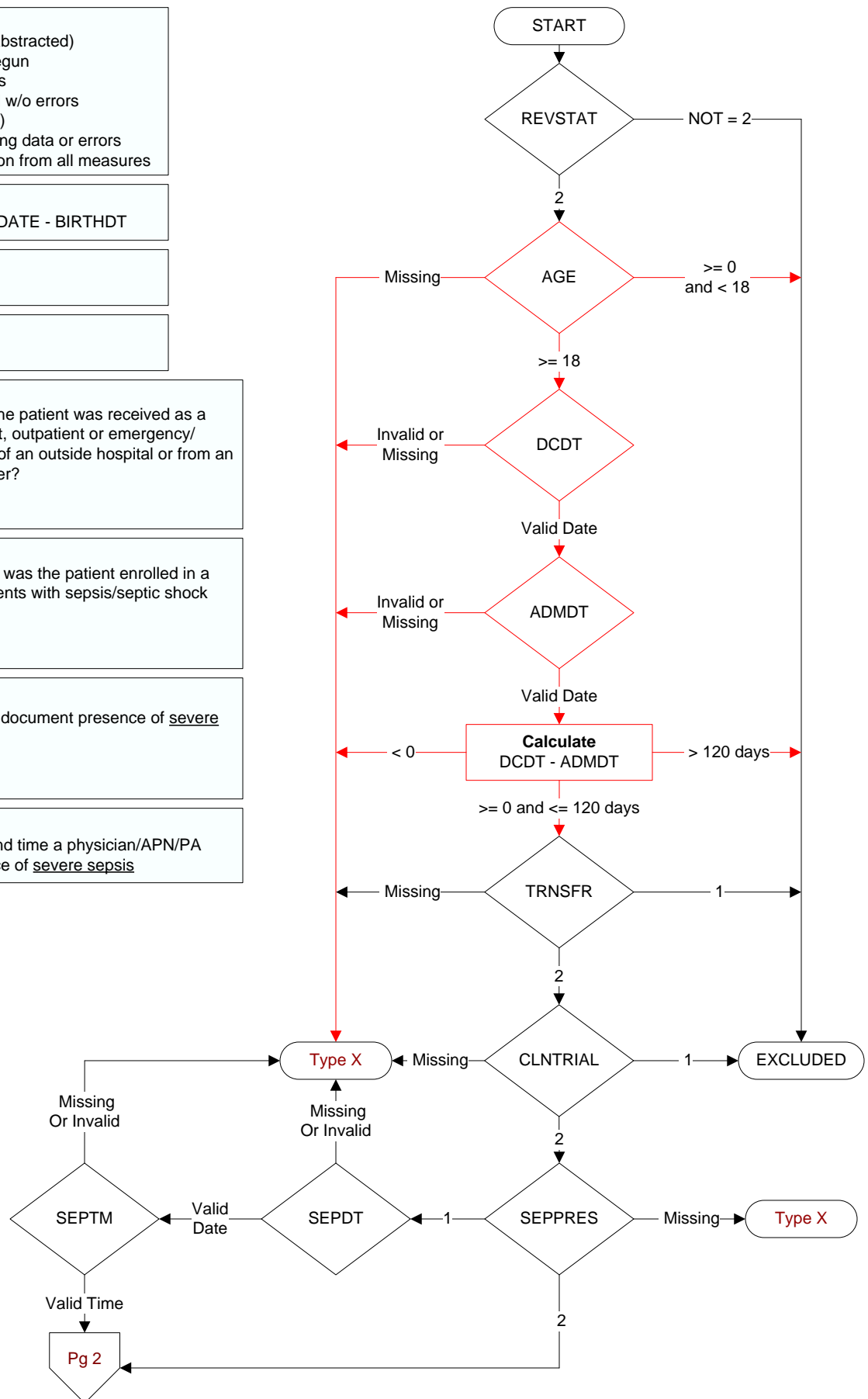
**SEPPRES**

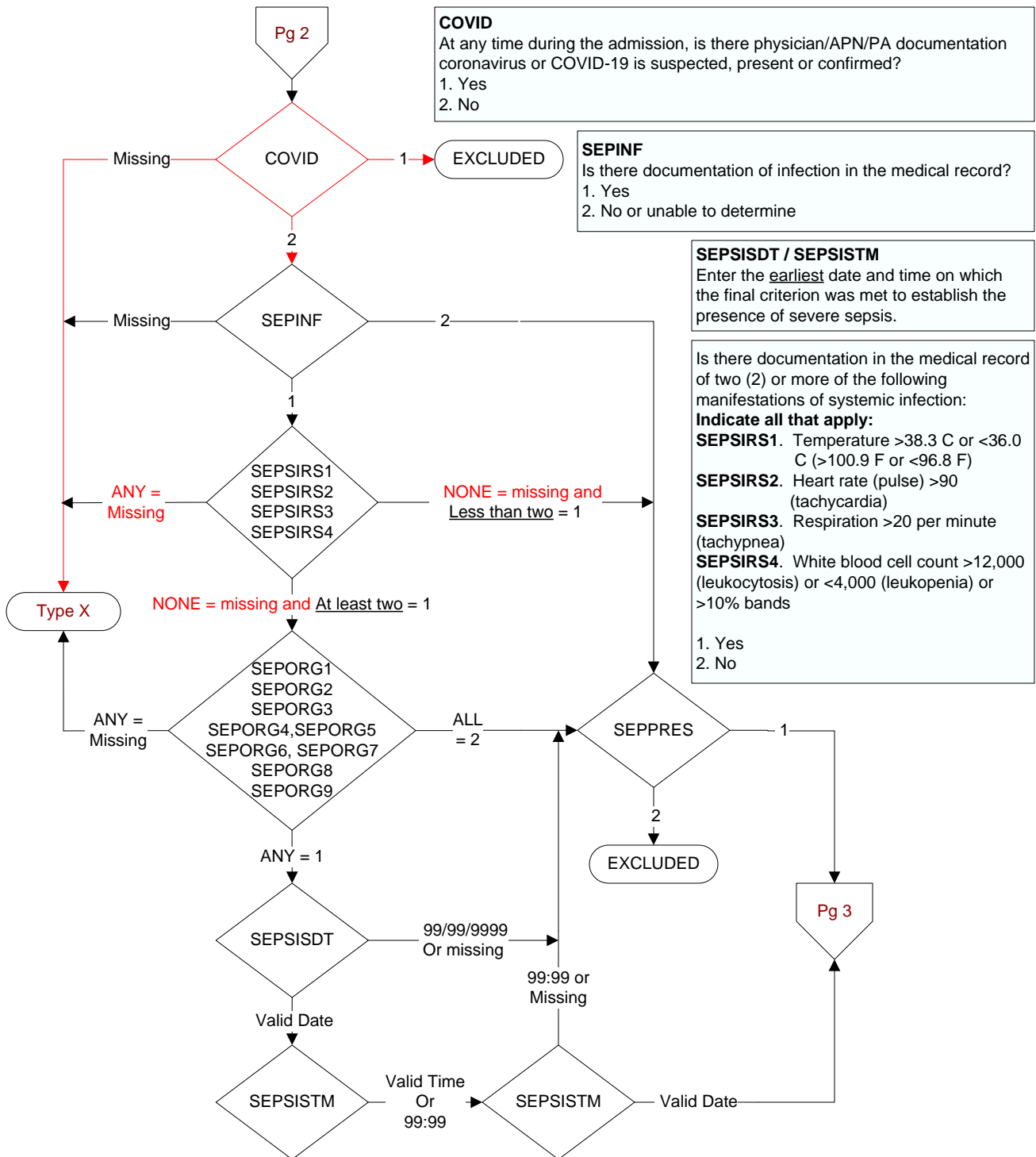
Did a physician/APN/PA document presence of severe sepsis?

1. Yes
2. No

**SEPDT / SEPTM**

Enter the earliest date and time a physician/APN/PA documented the presence of severe sepsis





Is there documentation of organ dysfunction in the medical record?

**Indicate all that apply:**

**SEPORG1.** Systolic blood pressure (SBP) < 90 mmHg or mean arterial pressure (MAP) < 65 mmHg

**SEPORG2.** Systolic blood pressure (SBP) decrease of more than 40 mmHg (see definitions/decision (D/D) rules)

**SEPORG3.** Acute respiratory failure as evidenced by a new need for invasive or non-invasive mechanical ventilation (see D/D rules)

**SEPORG4.** Creatinine > 2.0 (see D/D rules)

**SEPORG5.** Urine output < 0.5mL/kg/hour for 2 consecutive hours (see D/D rules)

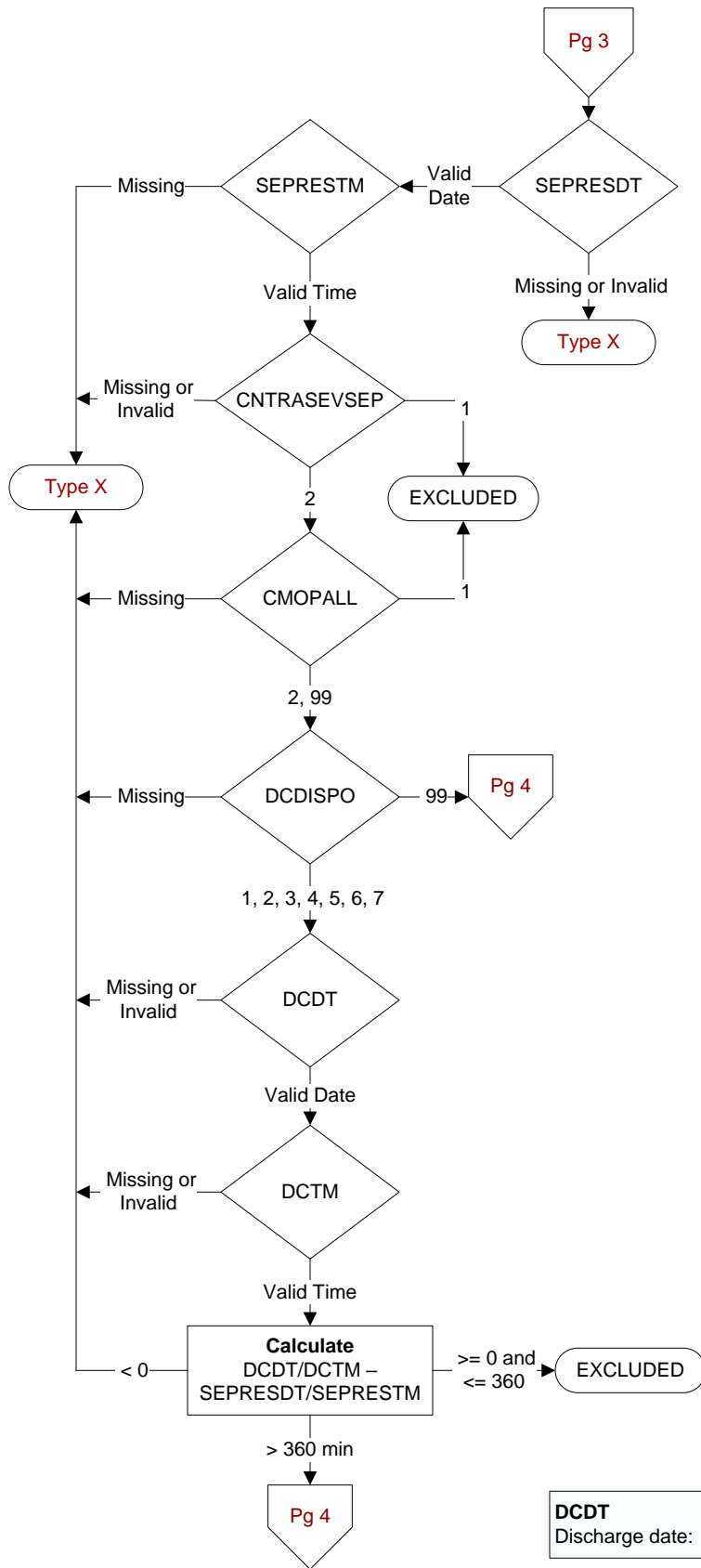
**SEPORG6.** Total bilirubin > 2 mg/dL (34.2 mmol/L)

**SEPORG7.** Platelet count < 100,000

**SEPORG8.** INR > 1.5 or aPTT > 60 seconds (see D/D rules)

**SEPORG9.** Lactate > 18.0 mg/dL (>2 mmol/L)

1. Yes
2. No



#### SEPRESDT

Computer to auto-fill earliest valid date entered in sepdtd or sepsisdtd.

#### SEPRESTM

Computer to auto-fill earliest valid time entered in septm or sepsism.

#### CNTRASEVSEP

During the timeframe from (computer to display sepdtd/sepdtd - 6 hours) to (computer to display sepdtd/sepdtd + 6 hours) is there physician/APN/PA or nursing documentation that the patient or authorized patient advocate refused either a blood draw, IV fluid administration, or IV antibiotic administration?

1. Yes
2. No or unable to determine

#### CMOPALL

During the timeframe from (computer to display sepdtd/sepdtd - 6 hours) to (computer to display sepdtd/sepdtd + 6 hours) is there physician/APN/PA documentation of comfort measures only or palliative care?

1. Yes
2. No
99. Not documented or time is unclear

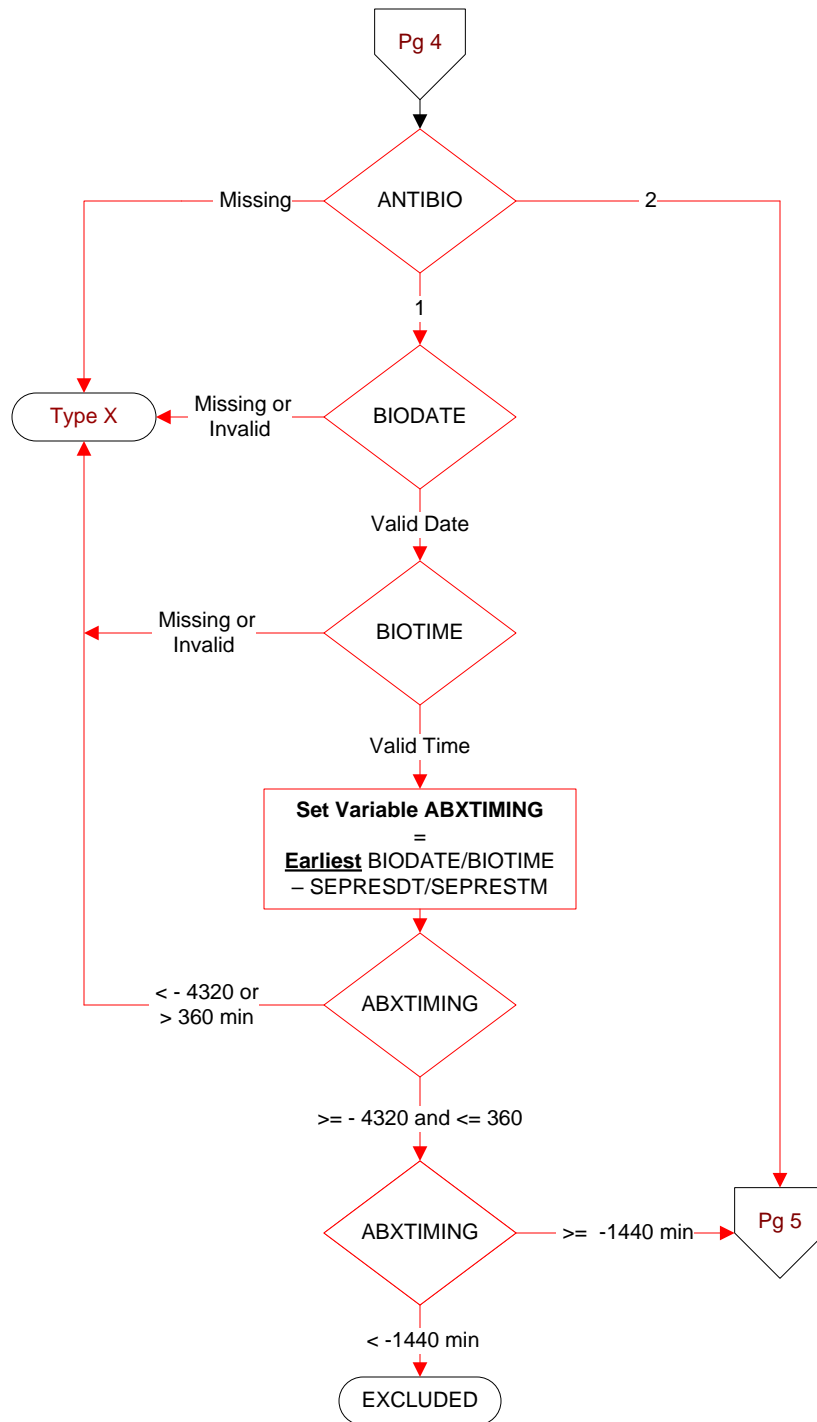
#### DCDISPO

What was the patient's discharge disposition on the day of discharge?

1. Home
  - Assisted Living Facilities (ALFs) – includes assisted living care at nursing home/facility
  - Court/Law Enforcement – includes detention facilities, jails, and prison
  - Home – includes board and care, domiciliary, foster or residential care, group or personal care homes, retirement communities, and homeless shelters
  - Home with Home Health Services
  - Outpatient Services including outpatient procedures at another hospital, outpatient Chemical Dependency Programs and Partial Hospitalization
2. Hospice – Home (or other home setting as listed in #1 (above))
3. Hospice – Health Care Facility
  - General Inpatient and Respite, Residential and Skilled Facilities, and Other Health Care Facilities
4. Acute Care Facility
  - Acute Short Term General and Critical Access Hospitals
  - Cancer and Children's Hospitals
  - Department of Defense and Veteran's Administration Hospitals
5. Other Health Care Facility
  - Extended or Immediate Care Facility (ECF/ICF)
  - Long Term Acute Care Hospital (LTACH)
  - Nursing Home or Facility including Veteran's Administration Nursing Facility
  - Psychiatric Hospital or Psychiatric Unit of a Hospital
  - Rehabilitation Facility including, but not limited to: Inpatient Rehabilitation Facility/Hospital, Rehabilitation Unit of a Hospital, Chemical Dependency/Alcohol Rehabilitation Facility
  - Skilled Nursing Facility (SNF), Sub-Acute Care or Swing Bed
  - Transitional Care Unit (TCU)
  - Veteran's Home
6. Expired
7. Left Against Medical Advice/AMA
99. Not documented or unable to determine

**DCDT**  
Discharge date:

**DCTM**  
Discharge time:

**ANTIBIO**

During the timeframe from (computer display sepresdt/seprestm - 72 hours) to (computer display sepresdt/seprestm + 6 hours) was a broad spectrum or other antibiotic administered intravenously (IV)?

1. Yes
2. No or unable to determine

Beginning with the first antibiotic administered during the timeframe from (computer display sepresdt/seprestm - 72 hours) to (computer display sepresdt/seprestm + 6 hours), enter the name of each antibiotic administered during the specified timeframe.

**BIODATE** - Enter the date of administration for each antibiotic.  
**BIOTIME** - Enter the time of administration for each antibiotic.

