

REVSTAT

REVIEW STATUS (not abstracted)

- 0. Abstraction has not begun
- 1. Abstraction in progress
- 2. Abstraction completed w/o errors
- 3. TVG failure (exclusion)
- 4. Record contains missing required answers (error record)
- 5. Administrative exclusion from all measures

FL_INPT (rcvd on pull list)

Flag indicating inpatient encounter

ADMDATE (FE)

Enter the admission date.

DCDATE (FE)

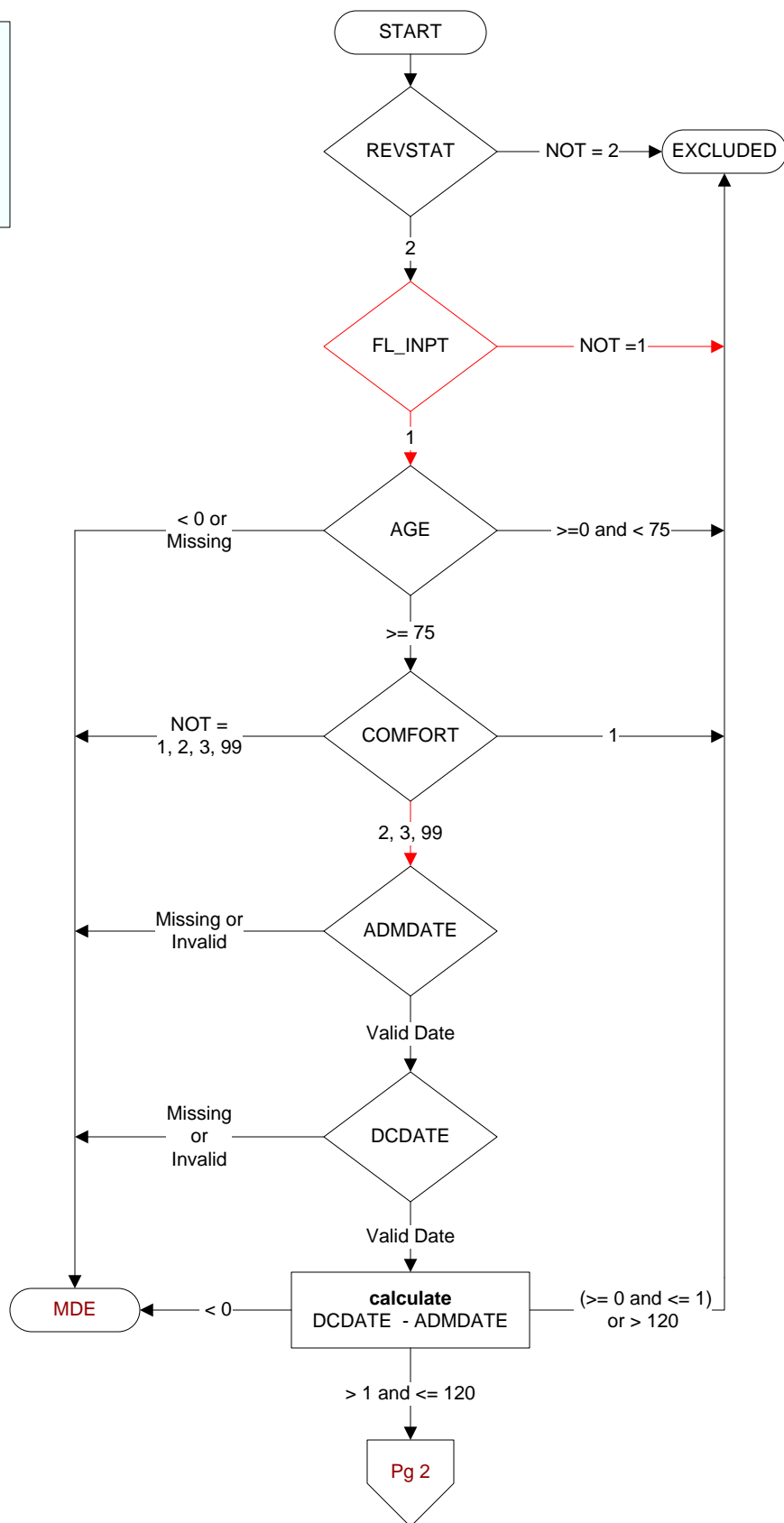
Enter the date of discharge for the most recent acute care hospitalization.

COMFORT (FE)

When is the earliest physician, APN, or PA documentation of comfort measures only?

- 1. Day of arrival (day 0) or day after arrival (day 1)
- 2. Two or more days after arrival (day 2 or greater)
- 3. Comfort measures only documented during hospital stay, but timing unclear
- 99. Comfort measures only was not documented by the physician/APN/PA or unable to determine

**MDE = Missing or
Invalid Data Exclusion
(data error)**



ADMTIME (FE)

Enter the admission time.

DCTIME (FE)

Enter the discharge time.

FL_SURGERY (rcvd on pull list)

Flag indicating surgery during encounter

ADMADL (FE)

Upon admission or during the 48 hours after admission, was an assessment of the patient's activities of daily living (ADLs) performed using a standardized and published tool?

1. yes

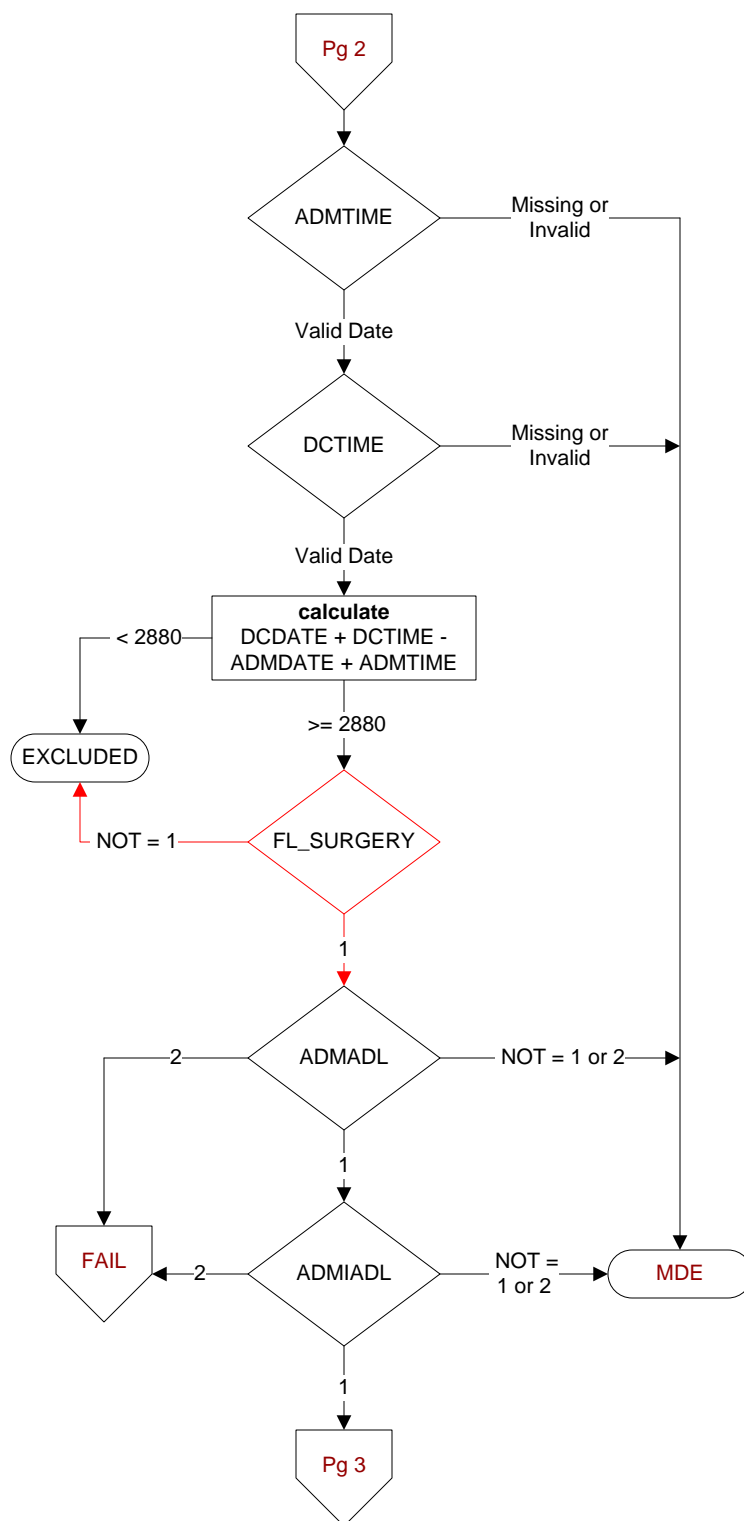
2. no

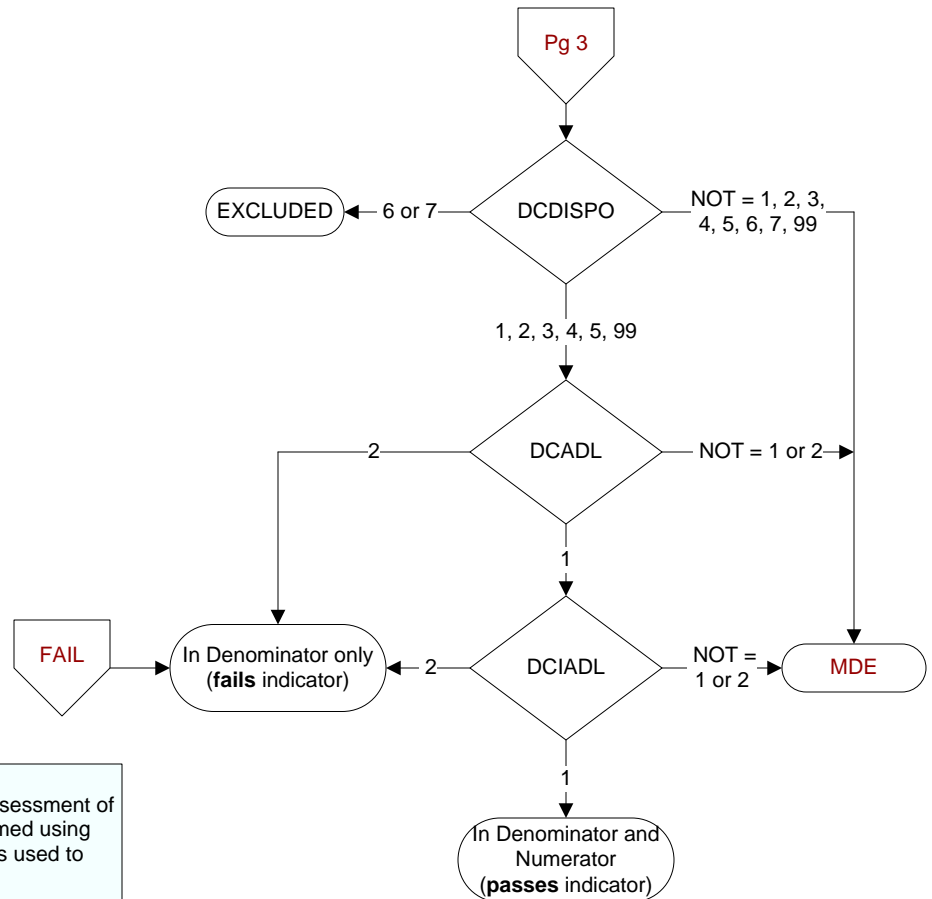
ADMIADL (FE)

Upon admission or during the 48 hours after admission, was an assessment of the patient's instrumental activities of daily living (IADLs) performed using a standardized and published tool?

1. Yes

2. No



**DCADL (FE)**

On the day of or day prior to discharge, was an assessment of the patient's activities of daily living (ADLs) performed using the same standardized and published tool that was used to assess ADLs upon admission?

1. Yes
2. No

DCIADL (FE)

On the day of or day prior to discharge, was an assessment of the patient's instrumental activities of daily living (IADLs) performed using the same standardized and published tool that was used to assess IADLs upon admission?

1. Yes
2. No

DCDISPO (SC Validation / FE)

What was the patient's discharge disposition on the day of discharge?

1. Home
 - Assisted Living Facilities
 - Court/Law Enforcement – includes detention facilities, jails, and prison
 - Board and care, domiciliary, foster or residential care, group or personal care homes, and homeless shelters
 - Home with Home Health Services
 - Outpatient Services including outpatient procedures at another hospital, outpatient Chemical Dependency Programs and Partial Hospitalization
2. Hospice – Home
3. Hospice – Health Care Facility
 - General Inpatient and Respite, Residential and Skilled Facilities, and Other Health Care Facilities
4. Acute Care Facility
 - Acute Short Term General and Critical Access Hospitals
 - Cancer and Children's Hospitals
 - Department of Defense and Veteran's Administration Hospitals
5. Other Health Care Facility
 - Extended or Immediate Care Facility (ECF/ICF)
 - Long Term Acute Care Hospital (LTACH)
 - Nursing Home or Facility including Veteran's Administration Nursing Facility
 - Psychiatric Hospital or Psychiatric Unit of a Hospital
 - Rehabilitation Facility including Inpatient Rehabilitation Facility/Hospital or Rehabilitation Unit of a Hospital
 - Skilled Nursing Facility (SNF), Sub-Acute Care or Swing Bed
 - Transitional Care Unit (TCU)
6. Expired
7. Left Against Medical Advice/AMA
99. Not documented or unable to determine