

**REVSTAT**

REVIEW STATUS (not abstracted)

- 0. Abstraction has not begun
- 1. Abstraction in progress
- 2. Abstraction completed w/o errors
- 3. TVG failure (exclusion)
- 4. Record contains missing required answers (error record)
- 5. Administrative exclusion from all measures

**FL\_INPT** (rcvd on pull list)

Flag indicating inpatient encounter

**AGE** (Calculated Field)

CGPI = BIRTHDT - ADMDATE

SC = BIRTHDT - SIADMDT

**ADMDATE** (FE)

Enter the admission date.

**DCDATE** (FE)

Enter the date of discharge for the most recent acute care hospitalization.

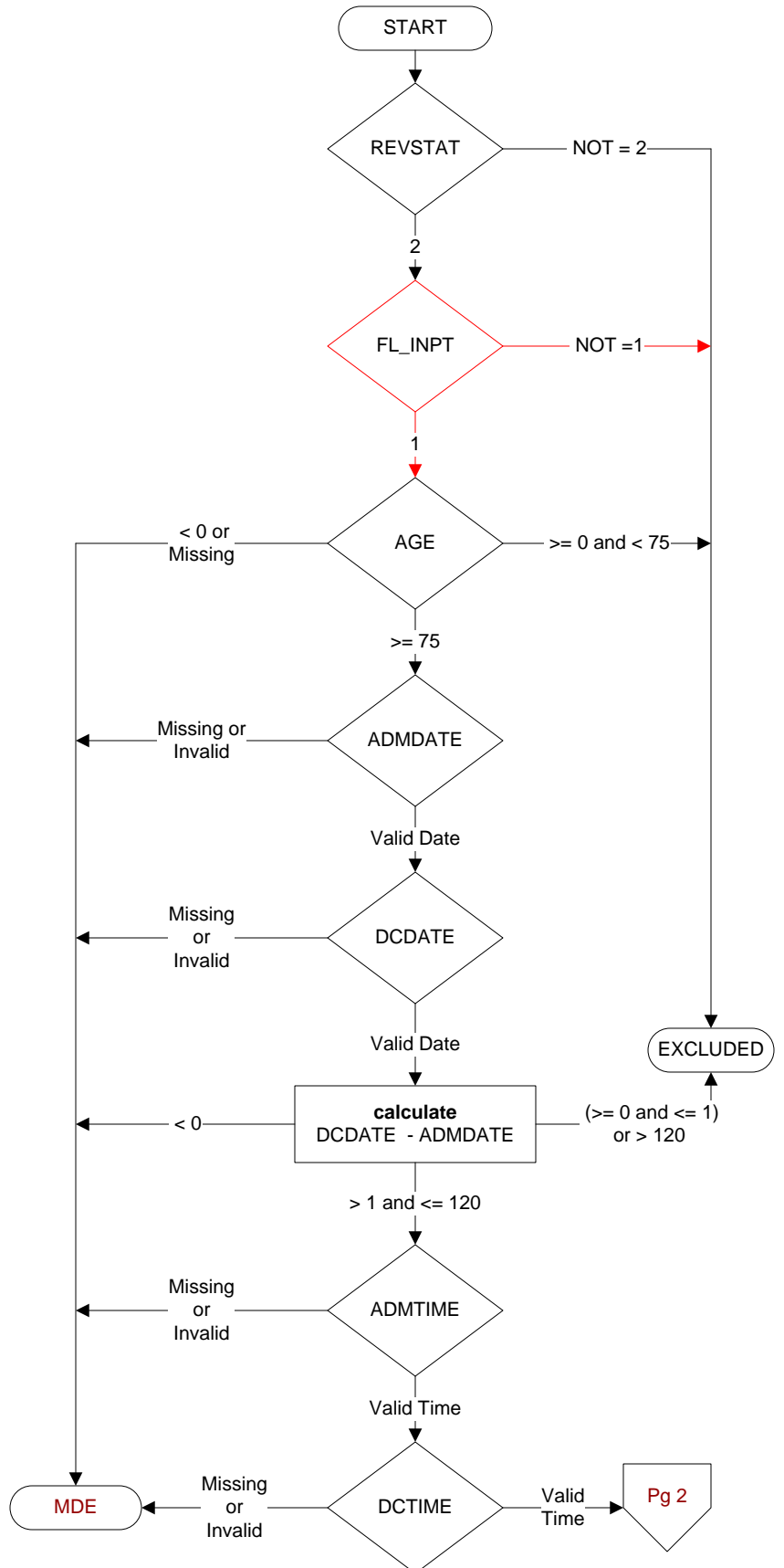
**DCTIME** (FE)

Enter the discharge time.

**ADMTIME** (FE)

Enter the admission time.

**MDE = Missing or  
Invalid Data Exclusion  
(data error)**



**DCDISPO** (SC Validation / FE)

What was the patient's discharge disposition on the day of discharge?

1. Home
  - Assisted Living Facilities
  - Court/Law Enforcement – includes detention facilities, jails, and prison
  - Board and care, domiciliary, foster or residential care, group or personal care homes, and homeless shelters
  - Home with Home Health Services
  - Outpatient Services including outpatient procedures at another hospital, outpatient Chemical Dependency Programs and Partial Hospitalization
2. Hospice – Home
3. Hospice – Health Care Facility
  - General Inpatient and Respite, Residential and Skilled Facilities, and Other Health Care Facilities
4. Acute Care Facility
  - Acute Short Term General and Critical Access Hospitals
  - Cancer and Children's Hospitals
  - Department of Defense and Veteran's Administration Hospitals
5. Other Health Care Facility
  - Extended or Immediate Care Facility (ECF/ICF)
  - Long Term Acute Care Hospital (LTACH)
  - Nursing Home or Facility including Veteran's Administration Nursing Facility
  - Psychiatric Hospital or Psychiatric Unit of a Hospital
  - Rehabilitation Facility including Inpatient Rehabilitation Facility/ Hospital or Rehabilitation Unit of a Hospital
  - Skilled Nursing Facility (SNF), Sub-Acute Care or Swing Bed
  - Transitional Care Unit (TCU)
6. Expired
7. Left Against Medical Advice/AMA
99. Not documented or unable to determine

Does the medical record contain a copy of written discharge instructions or documentation of educational material given to the patient or caregiver at discharge, addressing all of the following:

**DCDT** (FE)

Date of discharge?

1. Yes
2. No

**DCDX** (FE)

Diagnoses?

1. Yes
2. No

**DCMEDS** (IHF)

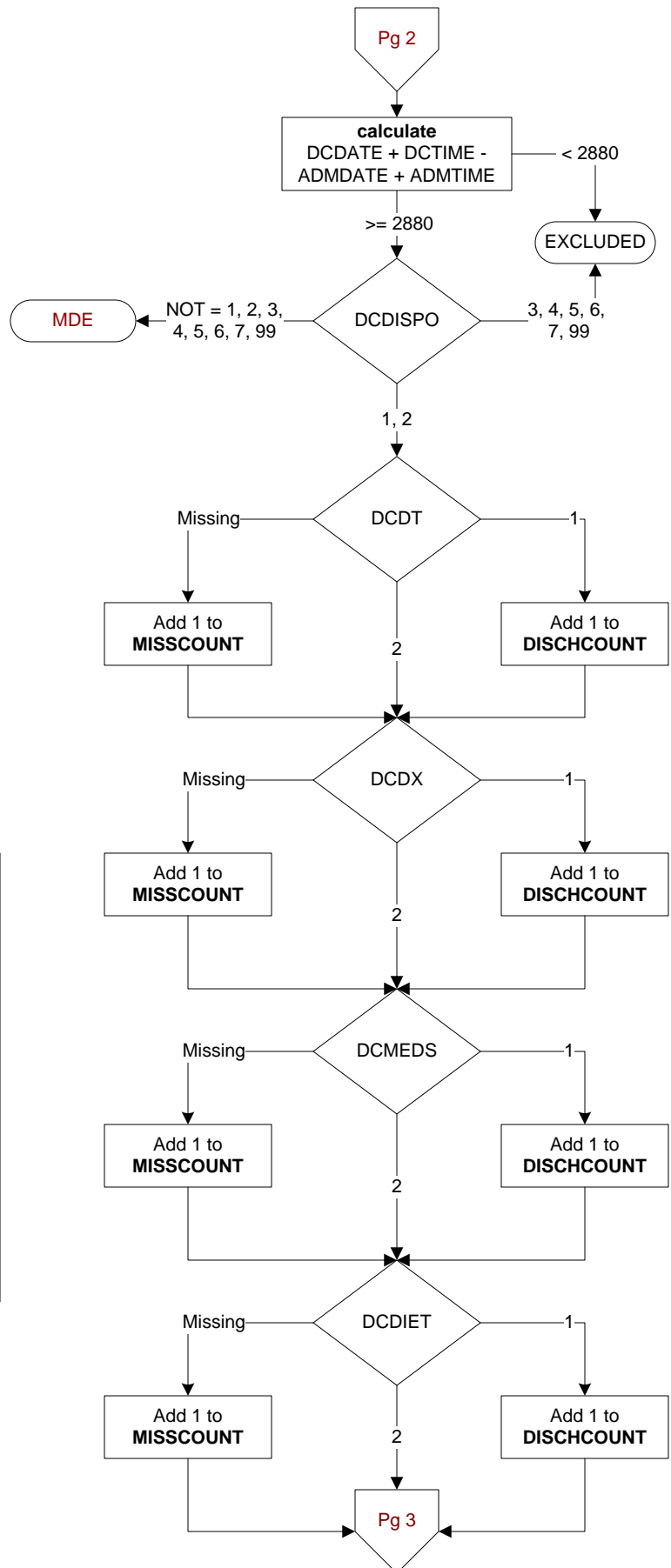
All discharge medications?

1. Yes
2. No

**DCDIET** (IHF)

Diet after discharge?

1. Yes
2. No



Does the medical record contain a copy of written discharge instructions or documentation of educational material given to the patient or caregiver at discharge, addressing all of the following:

**DCACT** (IHF)

Activity level after discharge?

1. Yes
2. No

**DCOND** (IHF)

Condition on discharge?

1. Yes
2. No

**PTEDUC** (IHF)

Patient education on post-discharge needs?

1. Yes
2. No
95. Not applicable

**DCFOLO** (IHF)

Follow-up with physician/APN/PA after discharge?

1. Yes
2. No

