

REVSTAT

REVIEW STATUS (not abstracted)

- 0. Abstraction has not begun
- 1. Abstraction in progress
- 2. Abstraction completed w/o errors
- 3. TVG failure (exclusion)
- 4. Record contains missing required answers (error record)
- 5. Administrative exclusion from all measures

FL_INPT (rcvd on pull list)

Flag indicating inpatient encounter

AGE (Calculated Field)

CGPI = BIRTHDT - ADMDATE

SC = BIRTHDT - SIADMDT

ADMDATE (FE)

Enter the admission date.

DCDATE (FE)

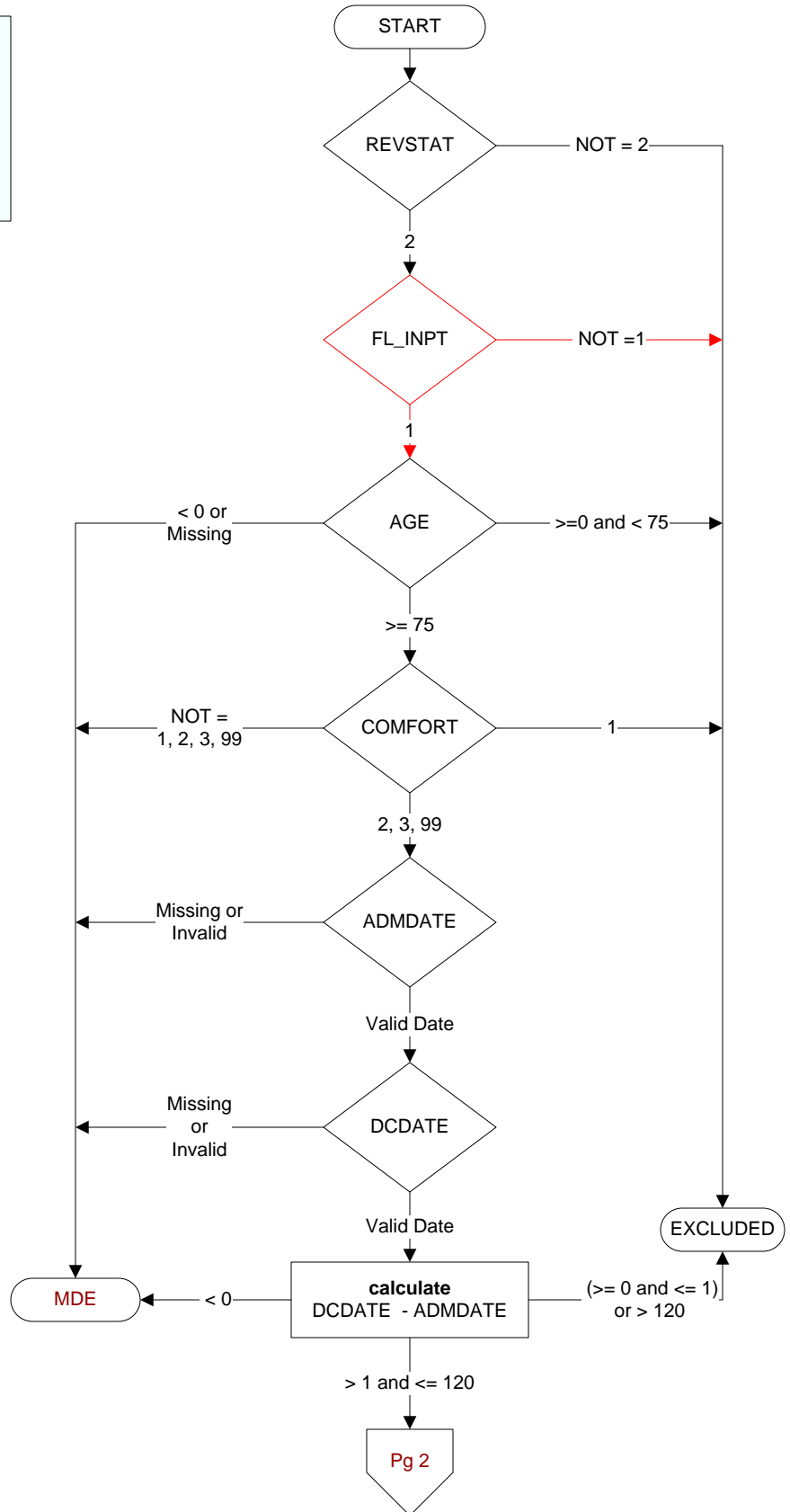
Enter the date of discharge for the most recent acute care hospitalization.

COMFORT (FE)

When is the earliest physician, APN, or PA documentation of comfort measures only?

- 1. Day of arrival (day 0) or day after arrival (day 1)
- 2. Two or more days after arrival (day 2 or greater)
- 3. Comfort measures only documented during hospital stay, but timing unclear
- 99. Comfort measures only was not documented by the physician/APN/PA or unable to determine

MDE = Missing or Invalid Data Exclusion (data error)



NOANSWER (FE)

During the ICU stay, did the physician/APN/PA document that the patient did not have decision-making capacity?

1. Yes
2. No

IDSURRO (FE)

During the ICU stay, did the physician/APN/PA, registered nurse, or social worker identify a surrogate?

1. Yes
2. No

TRYIDSUR (FE)

During the ICU stay, did the physician/APN/PA, registered nurse, or social worker document at least two attempts to identify a surrogate?

1. Yes
2. No
95. Not applicable

SURPREF (FE)

During the ICU stay, did the physician/APN/PA, registered nurse, or social worker discuss preferences for care with the caregiver/surrogate?

1. Yes
2. No
95. Not applicable

Pg 2

DCTIME (FE)

Enter the discharge time.

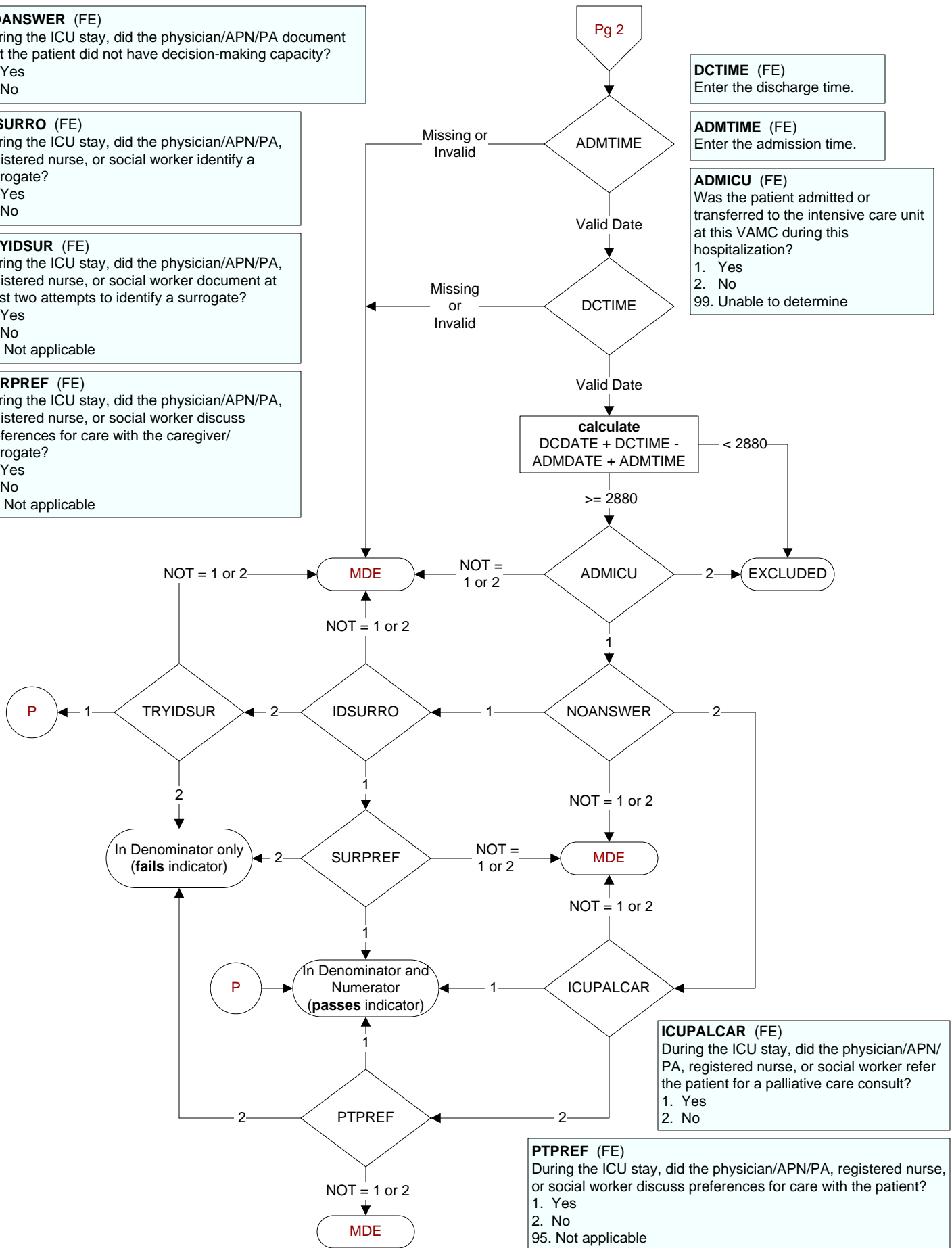
ADMTIME (FE)

Enter the admission time.

ADMICU (FE)

Was the patient admitted or transferred to the intensive care unit at this VAMC during this hospitalization?

1. Yes
2. No
99. Unable to determine

**ICUPALCAR (FE)**

During the ICU stay, did the physician/APN/PA, registered nurse, or social worker refer the patient for a palliative care consult?

1. Yes
2. No

PTPREF (FE)

During the ICU stay, did the physician/APN/PA, registered nurse, or social worker discuss preferences for care with the patient?

1. Yes
2. No
95. Not applicable